

1 **Rapid and sensitive detection of chlordimeform in cucumber**  
2 **and tomato samples using an immunochromatographic**  
3 **assay**  
4 **(Supporting information)**

## 5 Contents

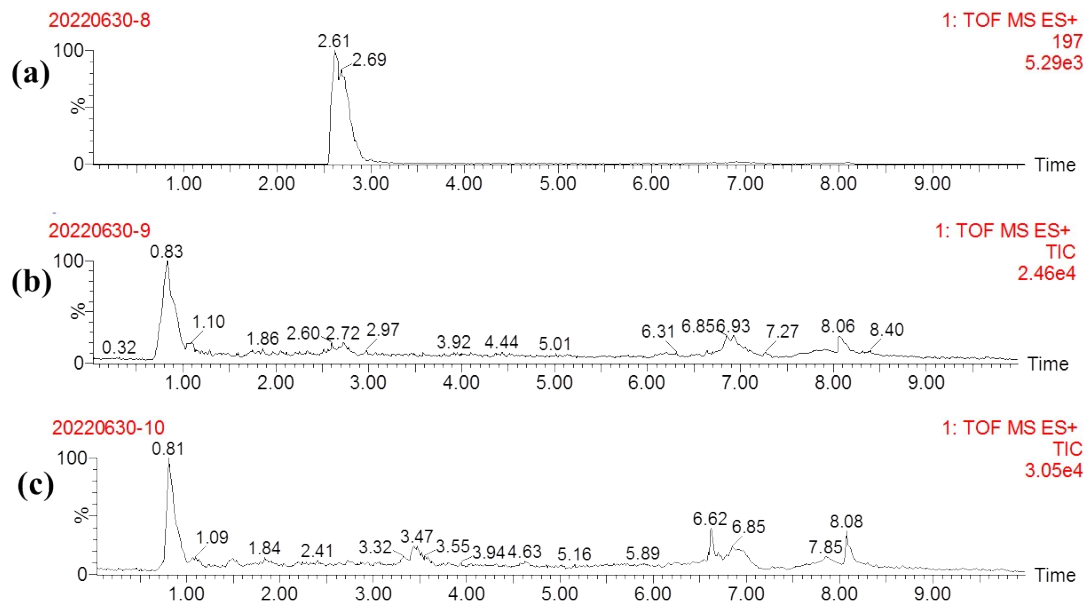
6 **Figure S1.** LC-MS analysis of CDM standard solution and cucumber and tomato  
7 samples. (a) The CDM standard solution. (b-c) The cucumber and tomato samples.

8 **Figure S2.** LC-MS analysis of CDM-hapten. (a) The liquid chromatogram spectrum of  
9 CDM-S<sub>1</sub>. (b) The mass spectrum of CDM-S<sub>1</sub>. (c) The liquid chromatogram spectrum  
10 of CDM-S<sub>2</sub>. (d) The mass spectrum of CDM-S<sub>2</sub>.

11 **Figure S3.** The UV-VIS spectroscopy of CDM-S<sub>1</sub>, CDM-S<sub>2</sub>, protein and conjugates.  
12 (a) Confirmation of CDM-S<sub>1</sub>-BSA. (b) Confirmation of CDM-S<sub>1</sub>-OVA. (c)  
13 Confirmation of CDM-S<sub>2</sub>-OVA.

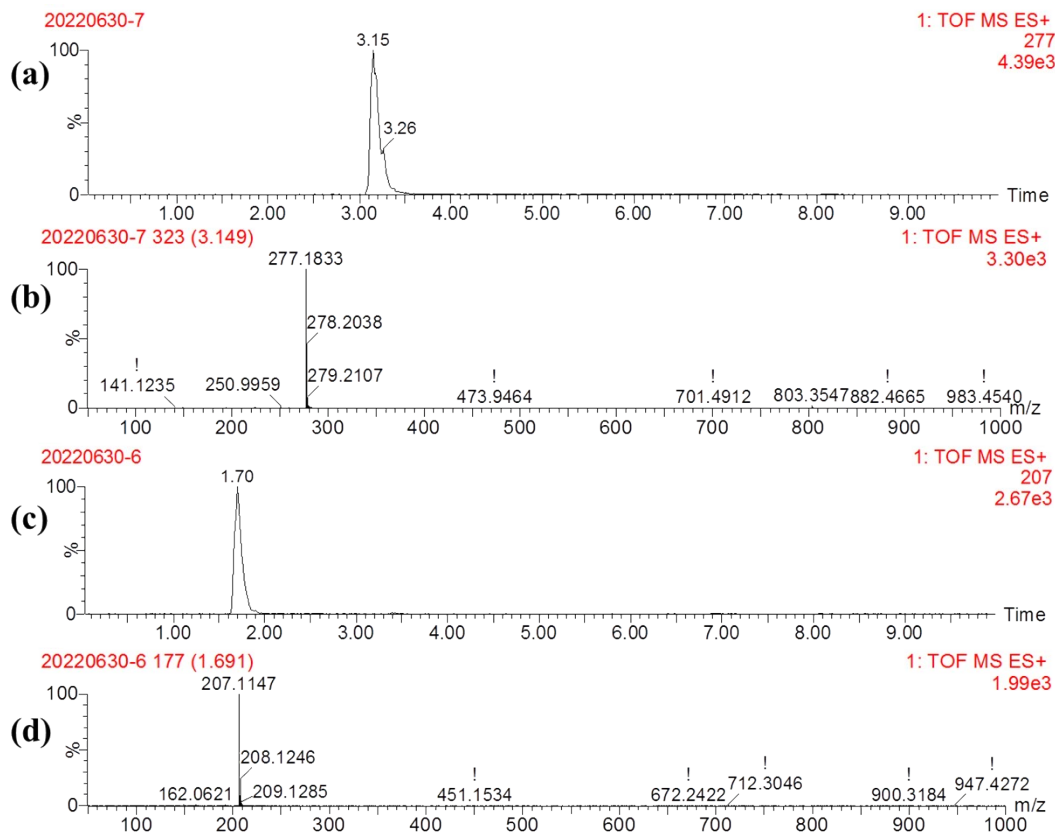
14 **Table S1.** The IC<sub>50</sub> values of mAbs with different coating antigen.

15 **Table S2.** Cross-reactivity of anti-CDM mAb 4A3.



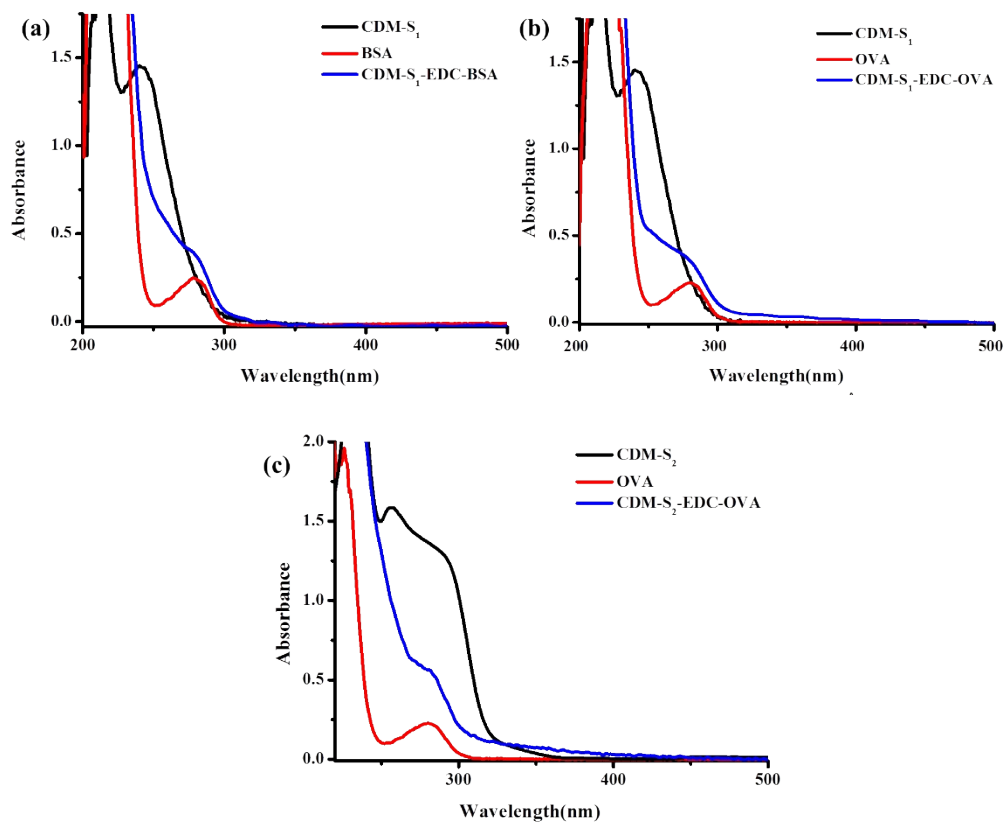
16

17 **Figure S1.** LC-MS analysis of CDM standard solution and cucumber and tomato  
 18 samples. (a) The CDM standard solution. (b-c) The cucumber and tomato samples.



19

20 **Figure S2.** LC-MS analysis of CDM-hapten. (a) The liquid chromatogram spectrum  
 21 of CDM-S<sub>1</sub>. (b) The mass spectrum of CDM-S<sub>1</sub>. (c) The liquid chromatogram  
 22 spectrum of CDM-S<sub>2</sub>. (d) The mass spectrum of CDM-S<sub>2</sub>.



23

24 **Figure S3.** The UV-VIS spectroscopy of CDM-S<sub>1</sub>, CDM-S<sub>2</sub>, protein and conjugates.

25 (a) Confirmation of CDM-S<sub>1</sub>-BSA. (b) Confirmation of CDM-S<sub>1</sub>-OVA. (c)

26 Confirmation of CDM-S<sub>2</sub>-OVA.

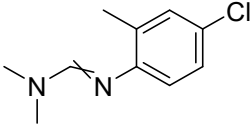
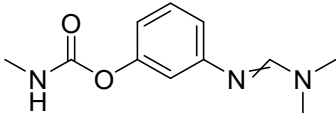
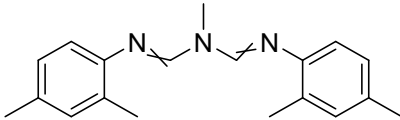
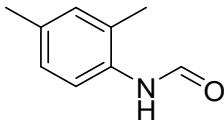
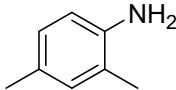
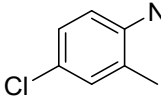
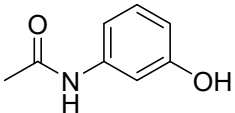
27

**Table S1.** The IC<sub>50</sub> values of mAbs with different coating antigen.

mAbs	Coating antigen	IC <sub>50</sub> (ng/mL)
3E1	CDM-S <sub>1</sub>	1.089
	CDM-S <sub>2</sub>	0.391
4A3	CDM-S <sub>1</sub>	0.643
	CDM-S <sub>2</sub>	0.287

28

**Table S2.** Cross-reactivity of anti-CDM mAb 4A3.

Competitors	Structure	IC <sub>50</sub> (ng/ mL)	CR (%)
Chlordimeform		0.287	100
Formetanate		>50	<5
Amitraz		>50	<5
2,4-dimethylformamidine		>50	<5
2,4-dimethylaniline		>50	<5
4-chloro-2-methylaniline		>50	<5
3-acetamidophenol		>50	<5