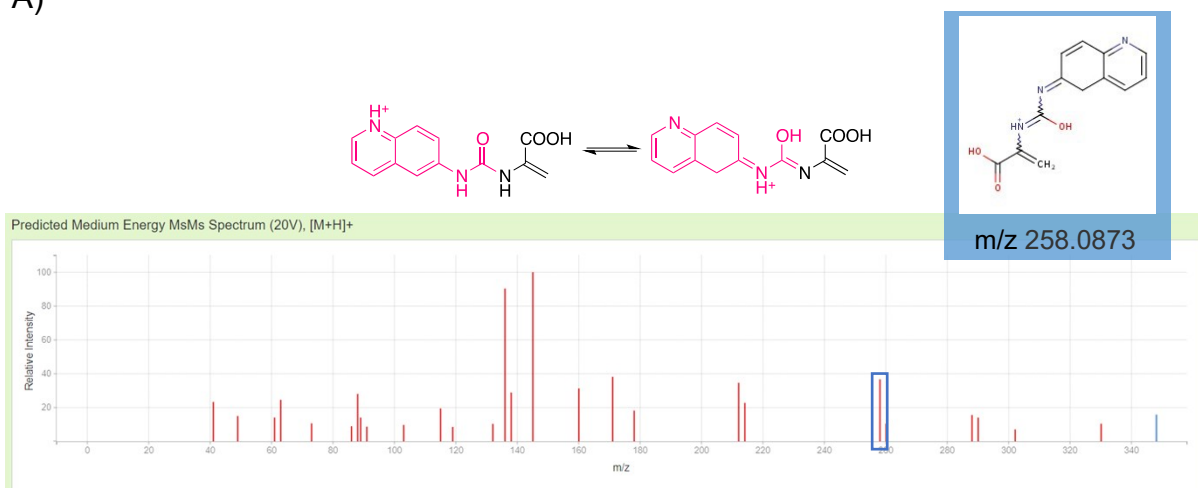


A)



B)

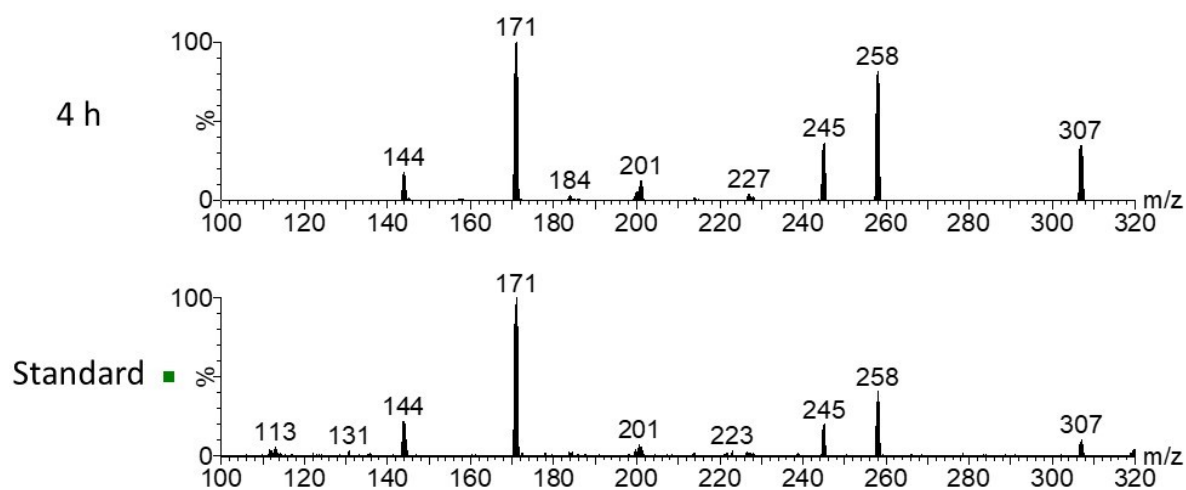


Fig. S2 A) CFM-ID *in silico* prediction of fragment spectra for **3**. Blue box indicates predicted m/z 258 fragment ion. Possible re-arrangement of the m/z 258 ion in the gas-phase are shown. B) MS/MS fragment spectra of putative identification of **3** at 4 h after garlic supplement administration and blank plasma spiked with SACS analytical standard.