

Supporting Information

**A sensitive MnO₂ nanosheet sensing platform based on a
fluorescence aptamer sensor for the detection of
zearalenone**

Guoxin Qin, Yuanwen Wei, Qifeng Zhou, Haijun Wang, Yuning Wei, Shuibing
Lao, Lihong Luo, Renfu Mo, Yongxian Chen, Yuxia Yang, Jie He* and
Huiling Li*

*Institute for Agricultural Product Quality Safety and Testing Technology,
Guangxi Academy of Agricultural Sciences, Nanning 530007, China.*

* *E-mail: herb312@126.com; lhl5040@163.com*

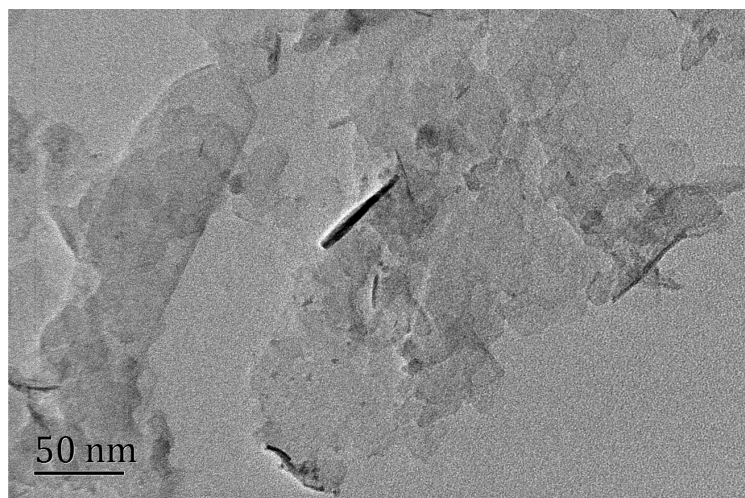


Figure S1. TEM image of the used MnO₂ nanosheet.

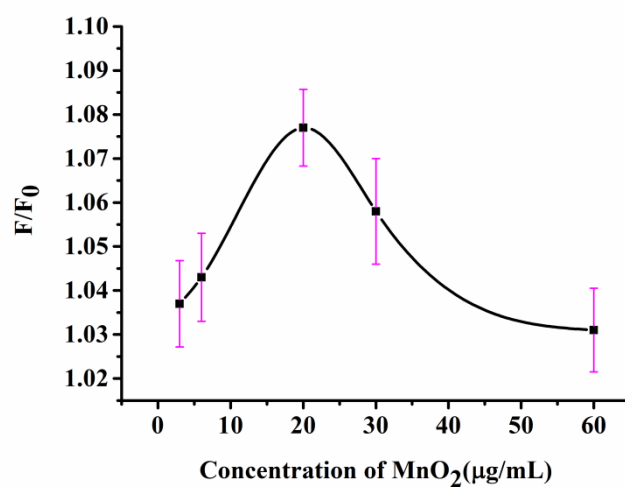


Figure S2. Effects of the amount of MnO₂ on FL intensity. Other experimental conditions were the same as those given in Figure 3.

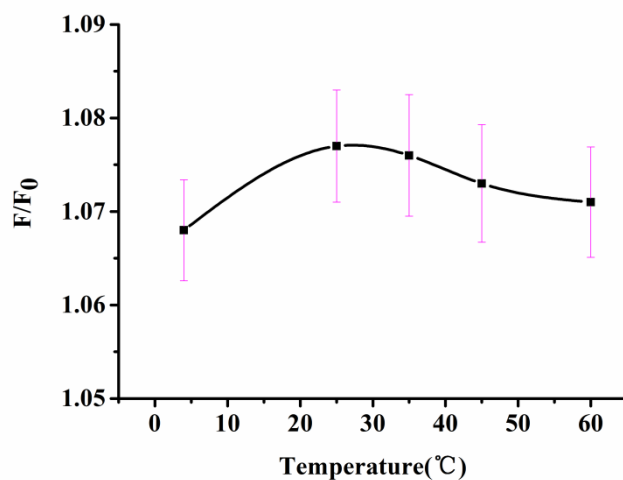


Figure S3. Effects of the binding temperature of 6-FAM-ZEN aptamer to MnO_2 nanosheet on FL intensity. Other experimental conditions were the same as those given in Figure 3.

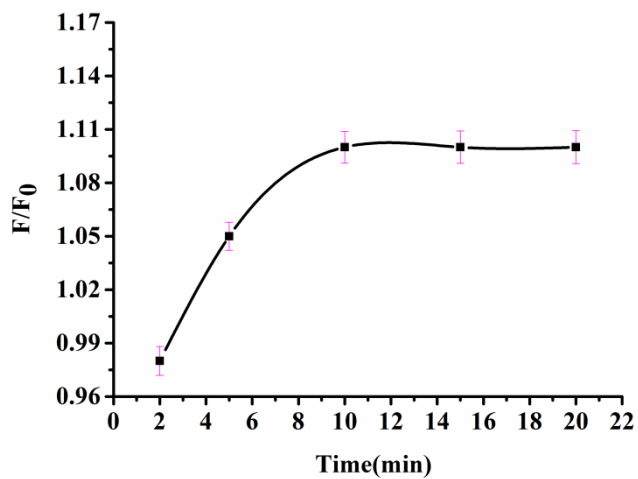


Figure S4. The effect of the binding time of 6-FAM-ZEN aptamer to MnO_2 nanosheet on the FL quenching. Other experimental conditions were the same as those given in Figure 3.

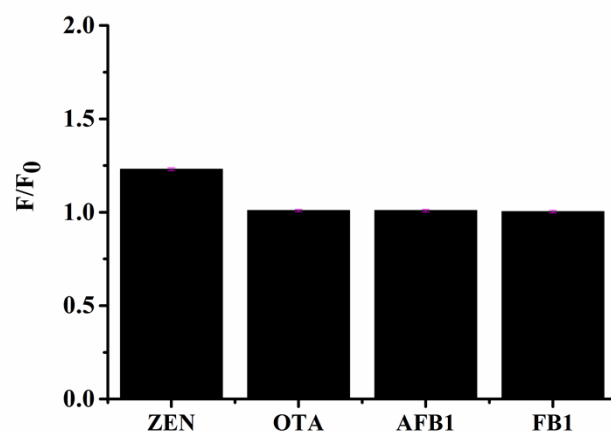


Figure S5. Detection specificity of the proposed FL aptamer sensor. Other experimental conditions were the same as those given in Figure 3.

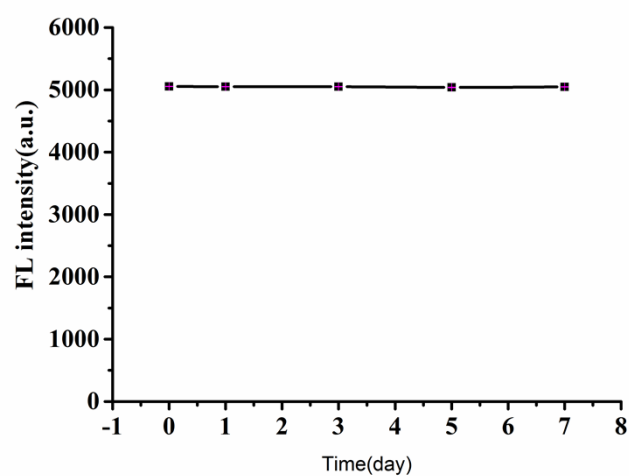


Figure S6. The stability of the G-Quadruplex/ZEN. Other experimental conditions were the same as those given in Figure 3.

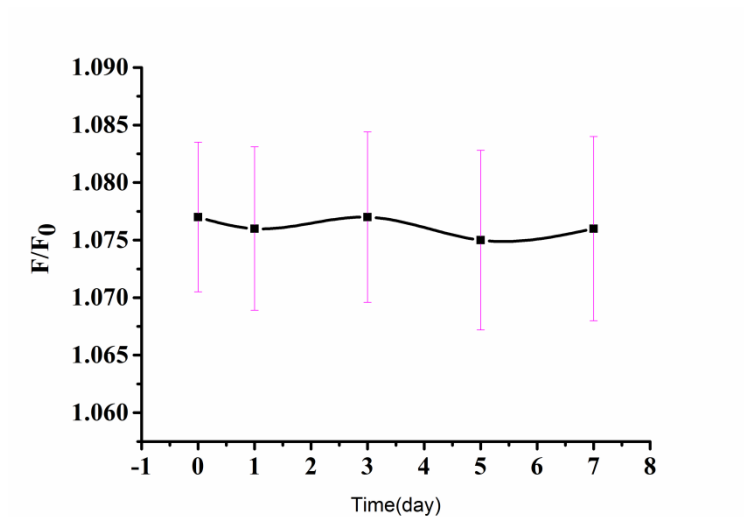


Figure S7. The durability of the FL aptamer sensor. Other experimental conditions were the same as those given in Figure 3.