

Supplementary Materials for

Nanodrug regulates lactic acid metabolism to reprogram the immunosuppressive tumor microenvironment for enhanced cancer immunotherapy

Lirong Tian^{a,†}, Minzhao Lin^{a,†}, Huihai Zhong^a, Yujun Cai^a, Bo Li^c, Zecong Xiao^{b,*} and Xintao Shuai^{a,c,*}

*Corresponding authors. E-mail: shuaixt@mail.sysu.edu.cn (X. T. Shuai);

xiao92826@hotmail.com (Z.C. Xiao)

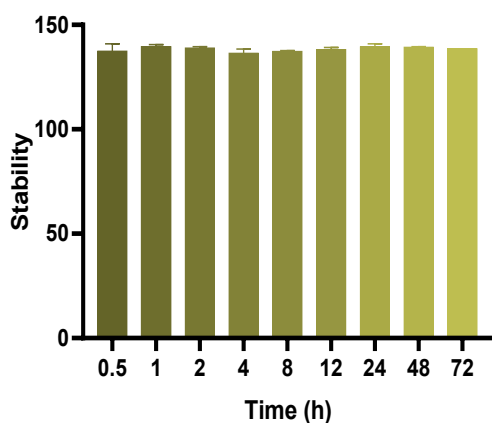


Figure S1. Stability of L@S/L in phosphate buffer saline (PBS) at 37°C. (mean ± SD; n = 3)

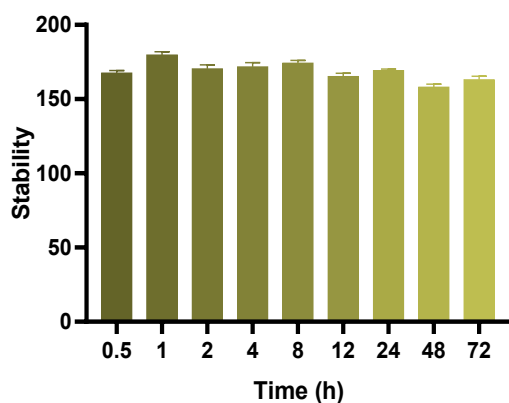


Figure S2. Stability of L@S/L in phosphate buffer saline (PBS) containing 10% FBS at 37°C. (mean ± SD; n

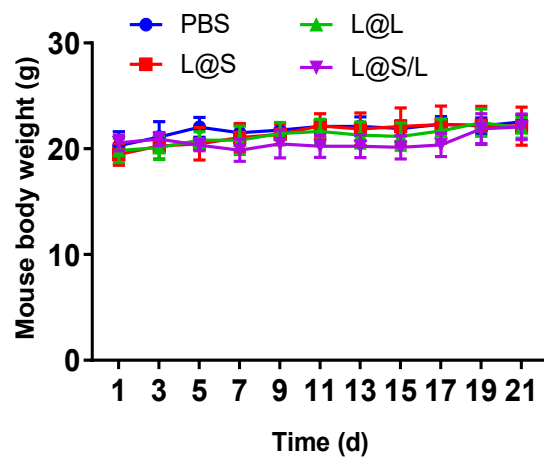


Figure S3. Changes of body weight during various treatments (mean \pm SD; n = 3).

Table S1. PDI of different liposomes of BL, L@L, L@S and L@S/L. (mean \pm SD; n = 3)

Group	PDI
BL	0.180 \pm 0.001
L@L	0.151 \pm 0.020
L@S	0.168 \pm 0.016
L@S/L	0.101 \pm 0.018

Table S2. PDI of L@S/L in phosphate buffer saline (PBS) at 37°C. (mean \pm SD; n = 3)

Time (h)	PDI
0.5	0.167 \pm 0.019
1	0.164 \pm 0.013
2	0.170 \pm 0.004
4	0.160 \pm 0.011
8	0.167 \pm 0.013
12	0.155 \pm 0.017
24	0.156 \pm 0.019
48	0.162 \pm 0.008
72	0.124 \pm 0.015

Table S3. PDI of L@S/L in phosphate buffer saline (PBS) containing 10% FBS at 37°C. (mean \pm SD; n = 3)

Time (h)	PDI
0.5	0.135 \pm 0.019
1	0.214 \pm 0.008
2	0.165 \pm 0.013
4	0.130 \pm 0.035
8	0.178 \pm 0.030
12	0.080 \pm 0.028
24	0.118 \pm 0.009
48	0.151 \pm 0.036
72	0.169 \pm 0.020