

**Facile fabrication of a biodegradable multi-hollow iron phosphate nanoplatfom for tumor-specific nanocatalytic therapy and chemotherapy**

Xue Li <sup>1</sup>, Qingxia Song <sup>1</sup>, Ting Zhou<sup>2</sup>, Hongli Chen<sup>1,3</sup>, Wenbin Nan <sup>1</sup>, Liqin Xie <sup>1</sup>, Haijiao Wang <sup>1</sup>, Qiqing Zhang <sup>1\*</sup>, Yongwei Hao <sup>1\*</sup>

1. School of Life Sciences and Technology, Xinxiang Medical University, 601 Jinsui Avenue, Xinxiang 453003, P. R. China.

2. School of Basic Medical Science, Xinxiang Medical University, 601 Jinsui Avenue, Xinxiang 453003, P. R. China.

3. The Third Affiliated Hospital of Xinxiang Medical University, 599 Hualan Avenue, Xinxiang 453003, P. R. China.

\*Correspondent: Dr. Yongwei Hao, Prof. Qiqing Zhang, School of Life Sciences and Technology, Xinxiang Medical University, 601 Jinsui Avenue, Xinxiang 453003, P. R. China. Tel: 86-373-3029887; Email: [haoyongweihao@139.com](mailto:haoyongweihao@139.com); [zhangqiq@126.com](mailto:zhangqiq@126.com)

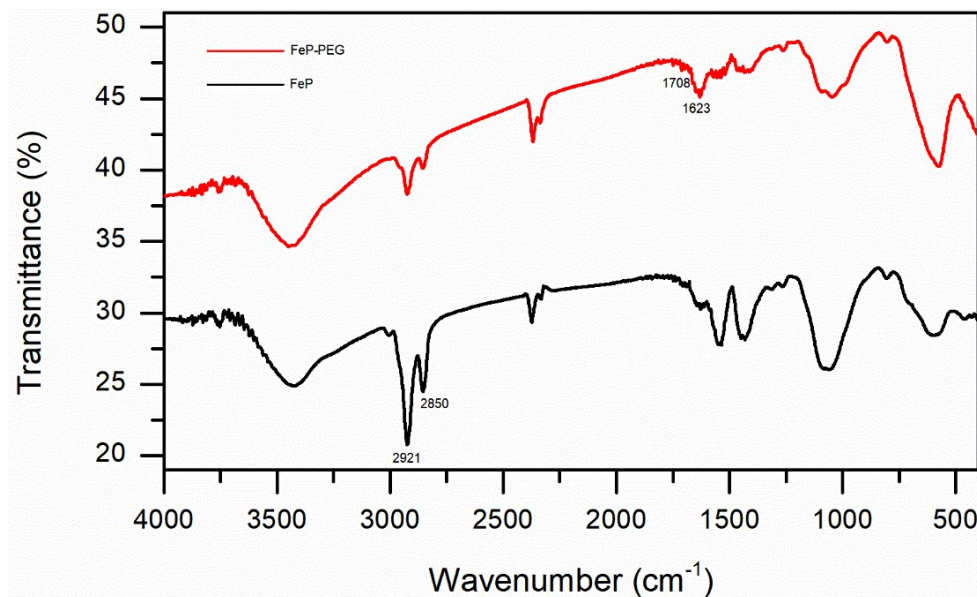


Figure S-1 Infrared spectroscopy of FeP and FeP-PEG.

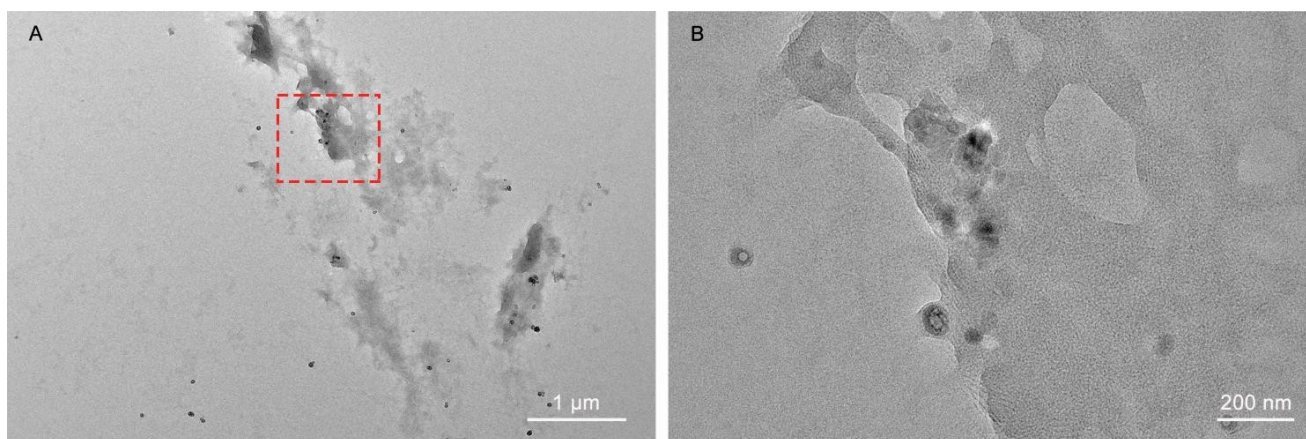


Figure S-2 The TEM image of FeP-PEG/DOX after they were immersed in pH 5.5 PBS for 12 h. (A) Low-magnification TEM image; (B) TEM image of a local region circled in (A).

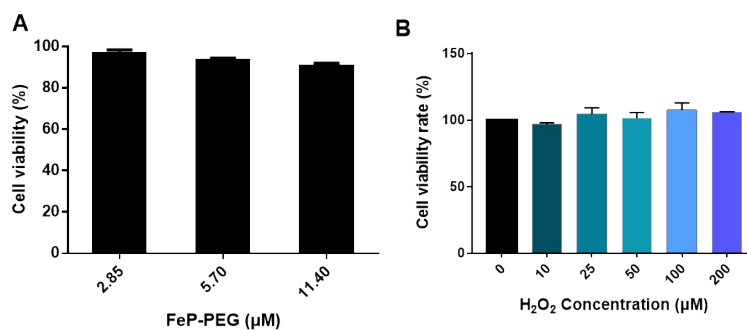


Figure S-3 (A) The cell viability of FeP-PEG at 24 h; (B) The cell viability of  $\text{H}_2\text{O}_2$  at 24 h.

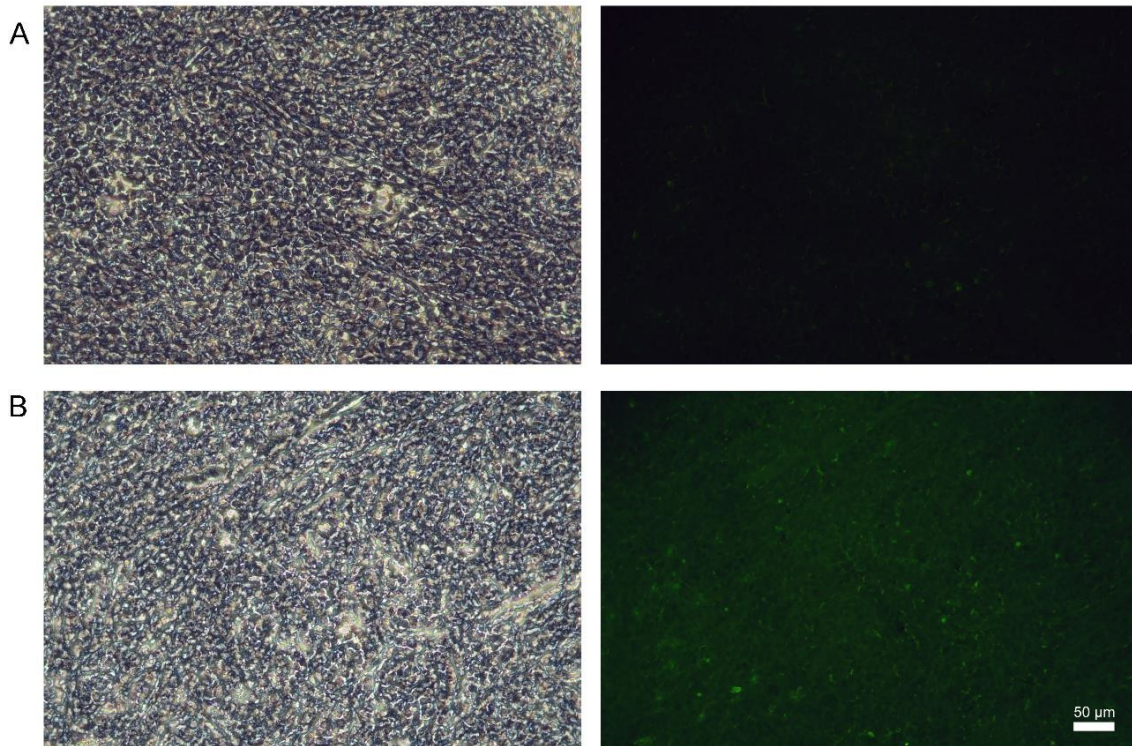


Figure S-4 The ROS stained tumor slices of the mice after the different treatment. (A) Control group.  
(B) FeP group.

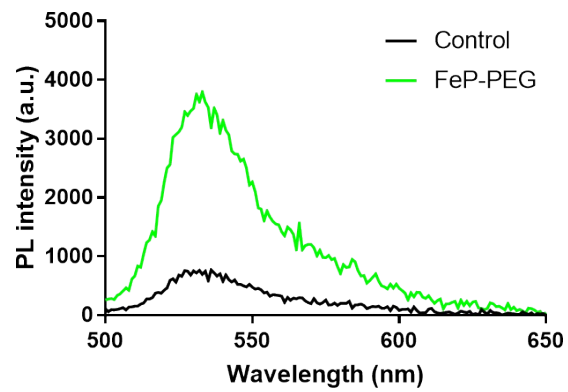


Figure S-5 Emission spectra of DCF in the range of 500-650 nm of different tumor slices under 488 nm laser excitation

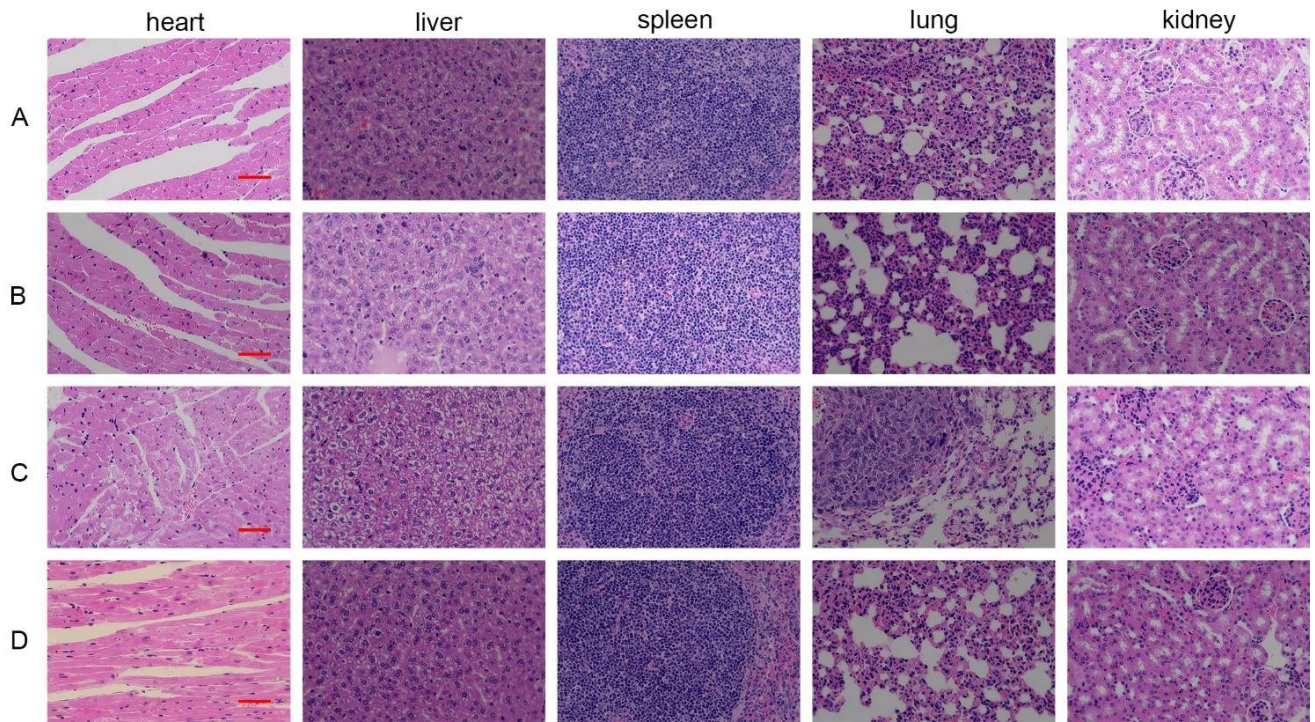


Figure S-6 H&E staining images of vital organs of mice subjected to different treatments. (A) Control group. (B) FeP-PEG group. (C) DOX group. (D) FeP-PEG/DOX group. Scale bar = 50  $\mu$ m.