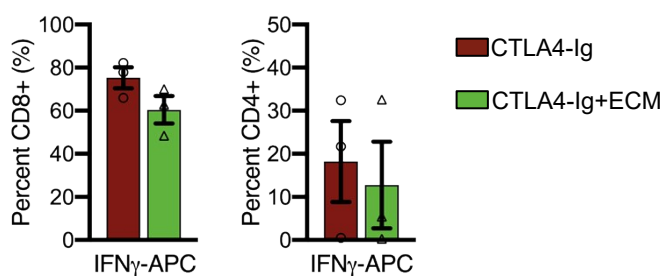
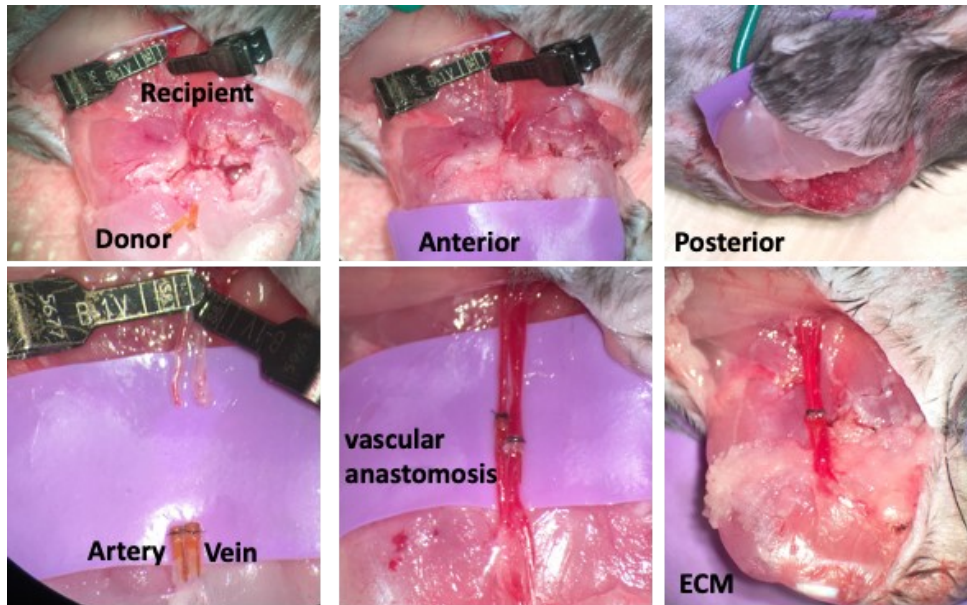


Supplementary Figures and Tables



Supplemental Figure 1: Intracellular cytokine staining of ECM and CTLA4-Ig costimulatory blockade shows similar IFN γ expression for both conditions in both the CD8 and CD4 T cells.



Supplementary Figure 2: Overview of transplant protocol and ECM administration at the local wound site. BALB/c (donor) hind limb was orthotopically transplanted to C57BL/6 (recipient) using a “Cuff” technique described by Furtmüller et al. (12). 30 mg of biologic scaffold material composed of decellularized urinary bladder matrix (Matristem, Acell) was resuspending in phosphate-buffered saline (PBS) at 400 mg/ml then injected into the interface and the subcutaneous space surrounding the approximation site of the donor and recipient musculature followed by skin closure.

Supplemental Table 1: Flow Cytometry Antibodies

| Marker | Conjugate | Clone | Manufacturer | Catalog # |
|---------------|------------------|--------------|---------------------|------------------|
| Viability | eFluor780 | | ThermoFisher | 65-0865-14 |
| CD45 | BV605 | 30-F11 | BioLegend | 103139 |
| F4/80 | PE/Cy7 | BM8 | BioLegend | 100747 |
| SiglecF | BV711 | E50-2440 | BD Bioscience | 740764 |
| CD4 | APC | GK1.5 | BioLegend | 100412 |
| CD8 | PE | 53-6.7 | BioLegend | 100708 |
| Ly6C | BV510 | HK1.4 | BioLegend | 128033 |
| CD11b | AF700 | M1/70 | BioLegend | 101222 |
| MHC II | PE/Dazzle 594 | M5/114 | BioLegend | 107648 |
| Ly6G | PacBlue | 1A8 | BioLegend | 127611 |
| CD64 | PerCP-Cy5.5 | X54-5/7.1 | BioLegend | 139308 |
| SiglecF | BV421 | E50-2440 | BD Bioscience | 562681 |
| MHC II | AF488 | M5/114 | BioLegend | 107615 |
| CD206 | PE | C068C2 | BioLegend | 141705 |
| CD86 | APC | GL-1 | BioLegend | 105012 |
| IL4 | PE | 11B11 | BioLegend | 504103 |
| IFN γ | APC | XMG1.2 | BioLegend | 505810 |
| CD16/32 | | 93 | BioLegend | 101320 |
| CD8 | BV711 | 53-6.7 | BioLegend | 100748 |
| CD4 | PE/Cy7 | GK1.5 | BioLegend | 100422 |
| CD3 | AF488 | 17A2 | BioLegend | 100212 |

Supplemental Table 2: TaqMan Assay Probes

| Probe | Assay ID |
|--------------|-----------------|
| IL1 α | Mm00439620_m1 |
| IL1 β | Mm00434228_m1 |
| IL4 | Mm00445259_m1 |
| IL6 | Mm00446190_m1 |
| IL13 | Mm00434204_m1 |
| CCL11 | Mm00441238_m1 |
| CCL24 | Mm00444701_m1 |
| Arg1 | Mm00475988_m1 |
| Chil3/Ym1 | Mm00657889_mH |
| IFN γ | Mm01168134_m1 |
| TNF α | Mm00443258_m1 |
| β 2M | Mm00437762_m1 |
| Rer1 | Mm00471276_m1 |
