

*Electronic Supplementary Information for:*

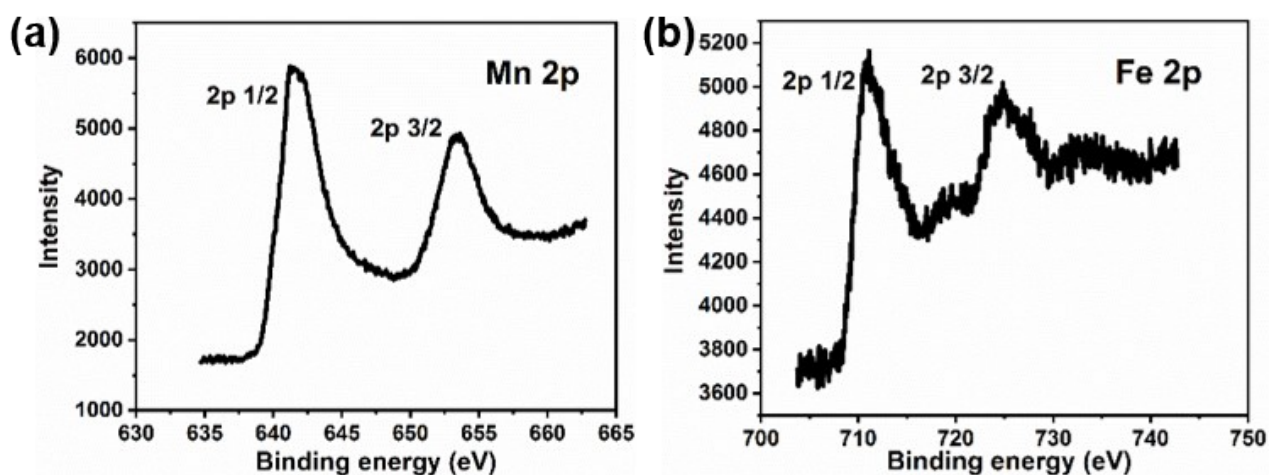
**Starvation-Assisted and Photothermal-Thrived Combined  
Chemo/Chemodynamic Cancer Therapy with PT/MR Bimodal Imaging**

*Bengao Zhu,<sup>a</sup> Mengmeng Zhang,<sup>a</sup> Qiang Chen,<sup>a</sup> Zeke Li,<sup>a</sup> Senbin Chen,<sup>\*a</sup> Jintao Zhu<sup>\*a</sup>*

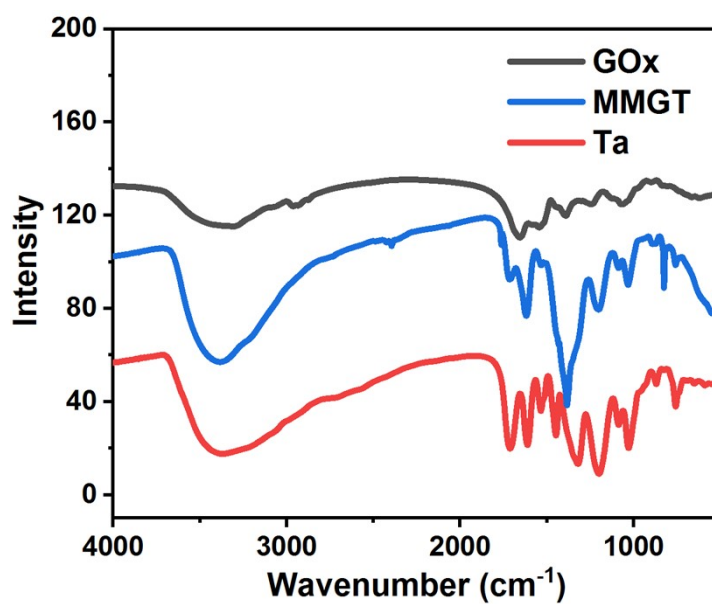
<sup>a</sup>: State Key Laboratory of Materials Processing and Mold Technology, and Key Laboratory of Materials Chemistry for Energy Conversion and Storage of Ministry of Education, School of Chemistry and Chemical Engineering, Huazhong University of Science and Technology (HUST), Wuhan, Hubei 430074, China.

Component	BE [ eV ]	FWHM [ eV ]	RSF	Atomic conc. [%]	Error [%]	Mass conc. [%]	Error [%]
Fe 2p	710.68	0	2.96	5.40	0.76	13.8	1.78
N 1s	401.18	0	0.48	0.2	0.19	0.2	0.12
C 1s	284.98	0	0.28	77.10	0.81	42.6	1.13
Mn 2p	641.23	0	2.66	17.2	0.49	43.5	1.18

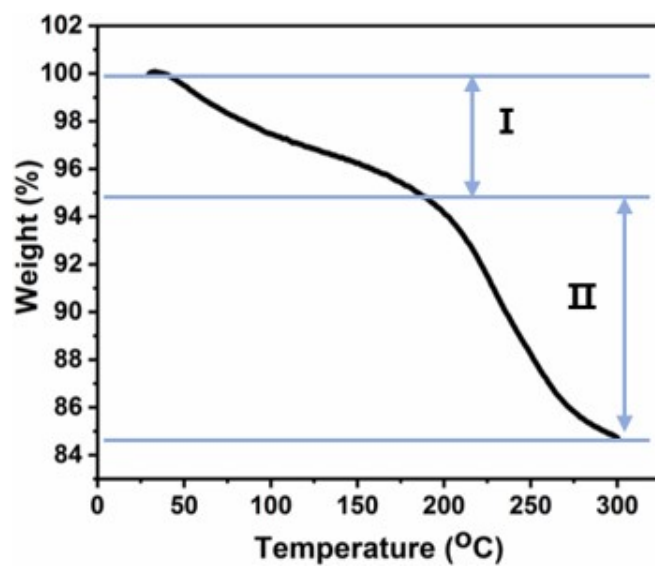
**Table S1.** The quantification of components of MMGT by XPS.



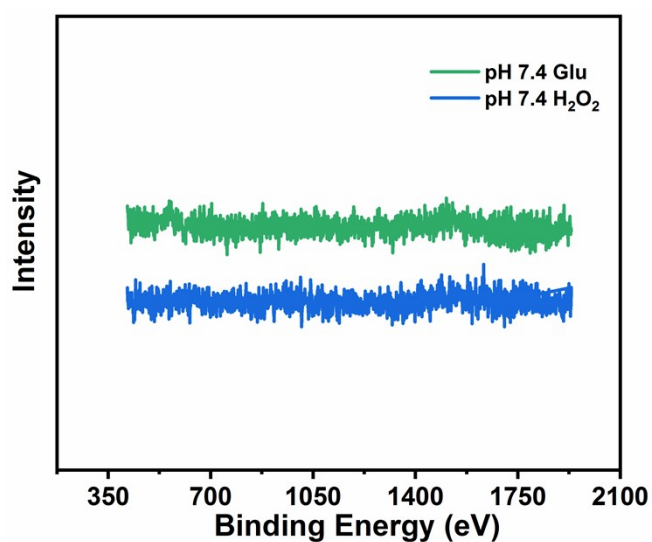
**Figure S1.** XPS peak spectrum of Mn 2p (a) and Fe 2p (b) in MMGT.



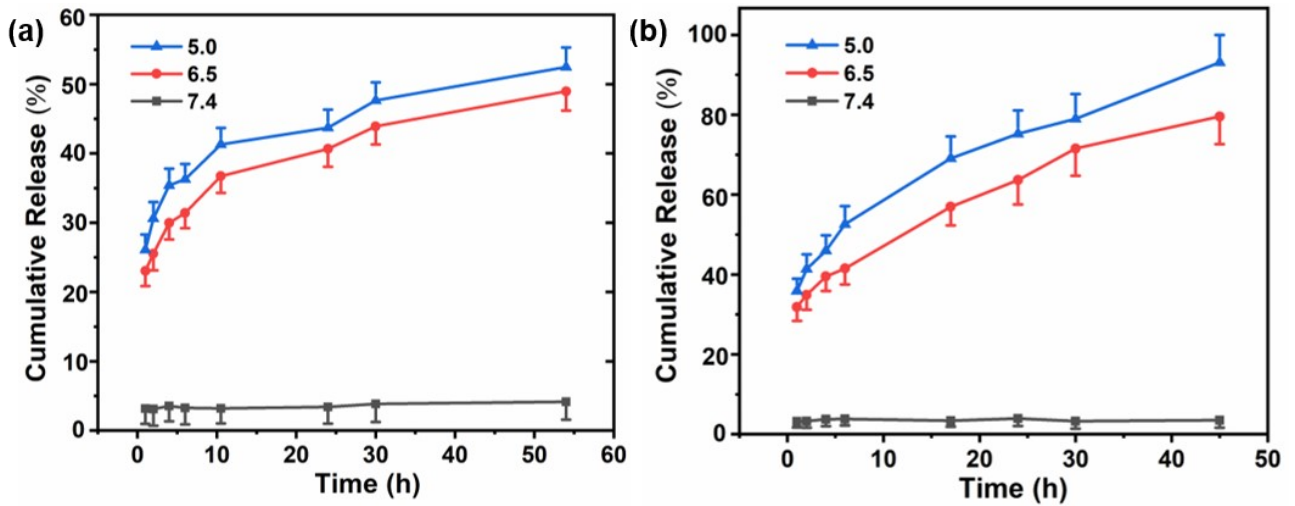
**Figure S2.** The infrared spectra of GOx, MMGT and Ta.



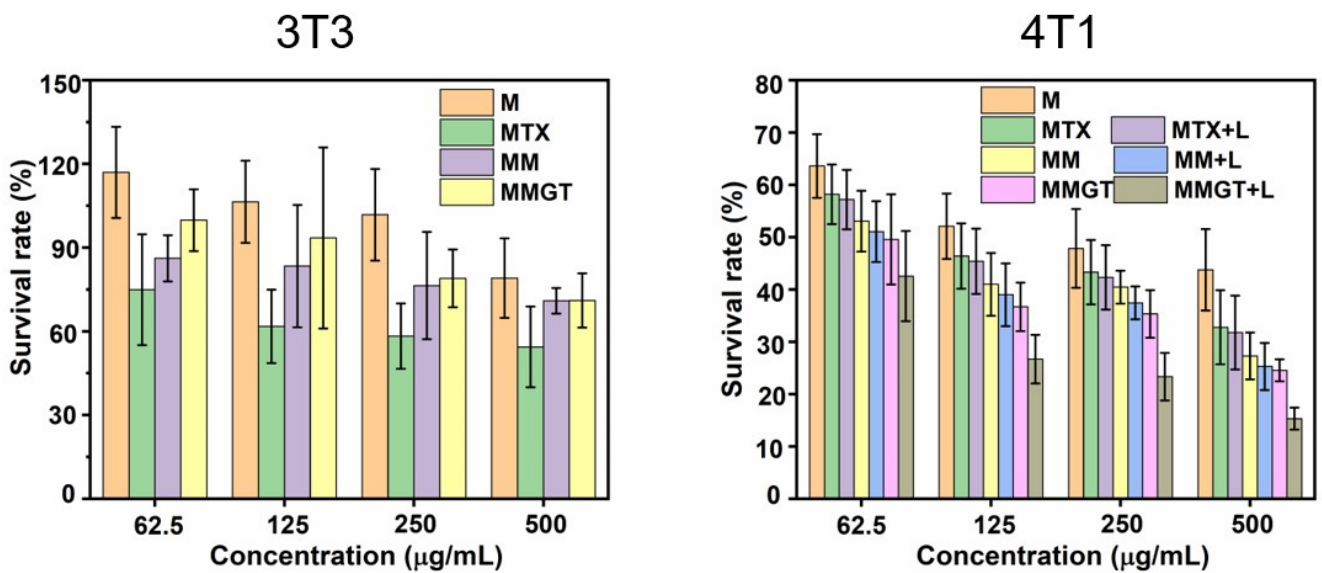
**Figure S3.** Thermogravimetric curve of MMGT.



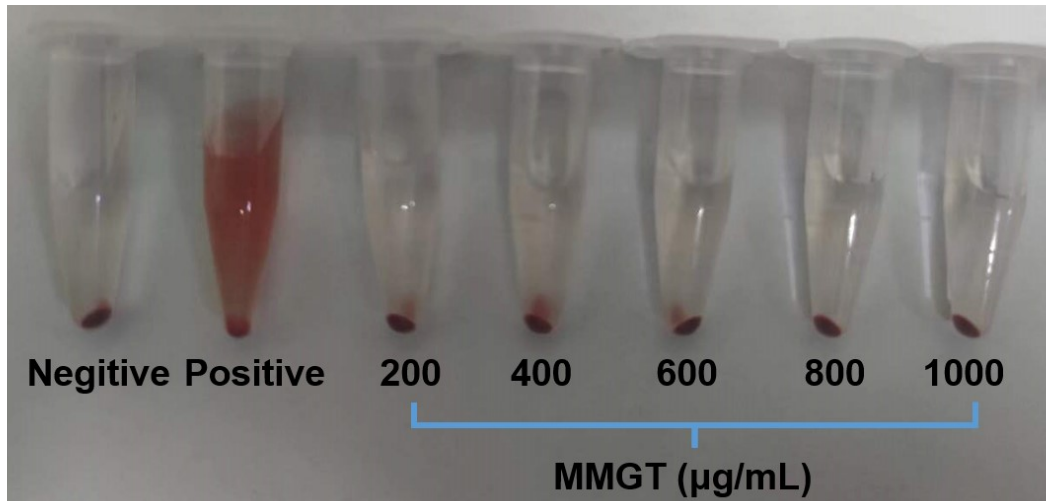
**Figure S4.** EPR spectra of MMGT nanoparticles in PBS buffer solutions at pH 7.4 with H<sub>2</sub>O<sub>2</sub> or Glu.



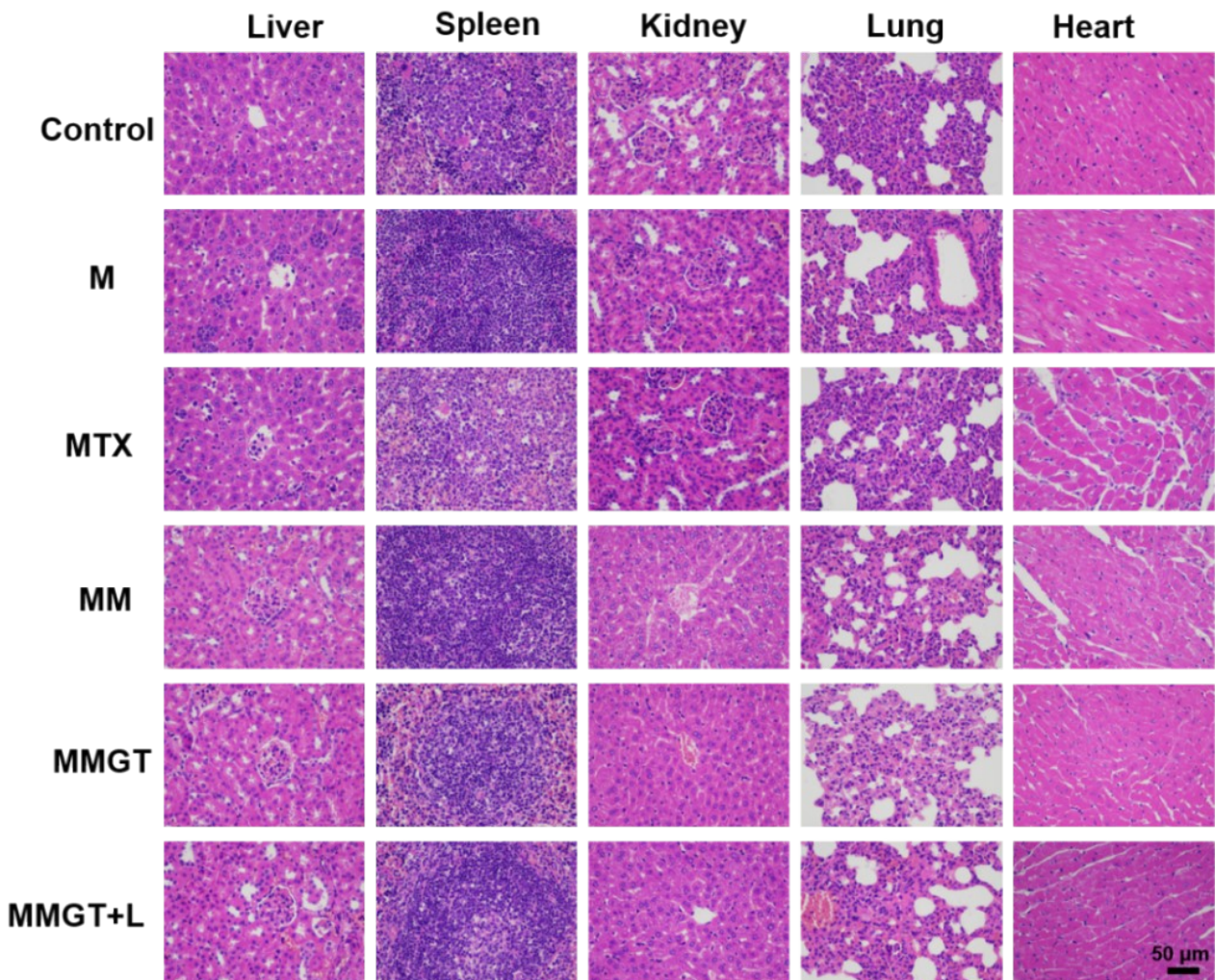
**Figure S5.** Accumulative releasing profiles of MTX from MMGT without (a) or with (b) glucose in PBS solutions with pH 7.4, 6.5 and 5.0.



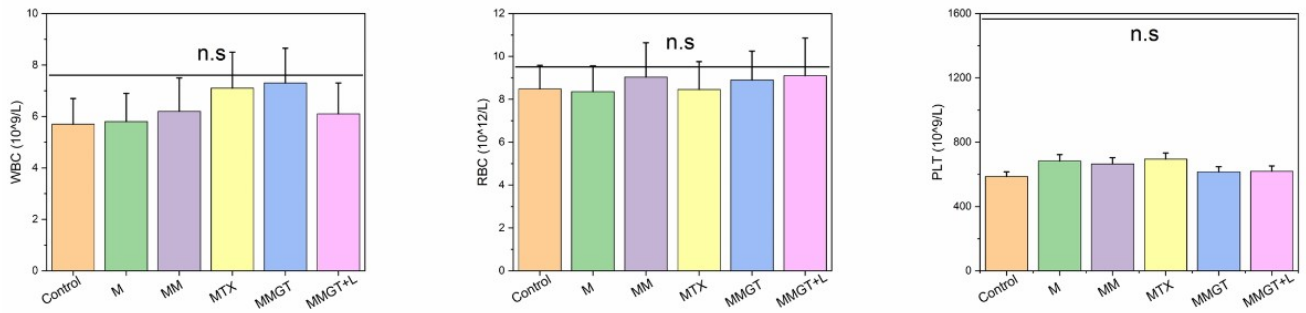
**Figure S6.** Viability of 3T3 and 4T1 cells incubated in various groups for 24h.



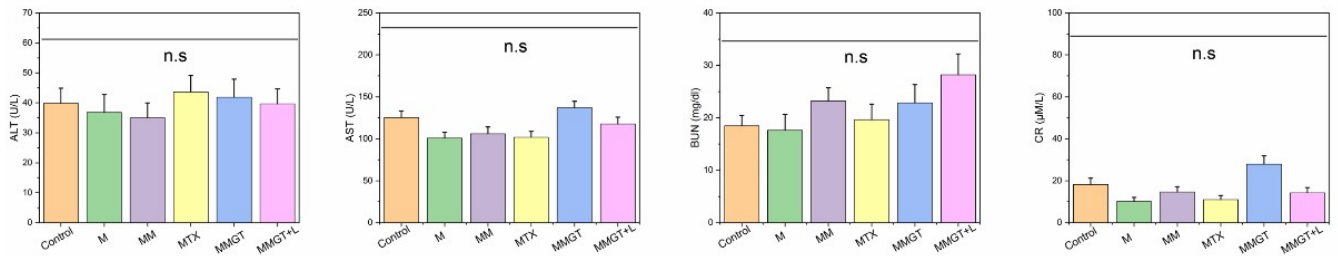
**Figure S7:** Hemolysis analysis of RBC incubated with saline, water and varying concentrations of MMGT.



**Figure S8.** Representative H&E stained sections of liver, spleen, kidney, lung and heart from mice treated with PBS, M, MTX, MM, MMGT and MMGT+L. The scale bar in the last image applies to the others.



**Figure S9.** Analysis of WBC, RBC and PLT after intravenously injection of PBS, M, MM, MTX, MMGT and MMGT+L into the healthy BALB/c mice at day 7.



**Figure S10.** Biochemical analysis of ALT, ATS, BUN, and CR after intravenously injection of PBS, M, MM, MTX, MMGT and MMGT+L into the healthy BALB/c mice after 7 days.