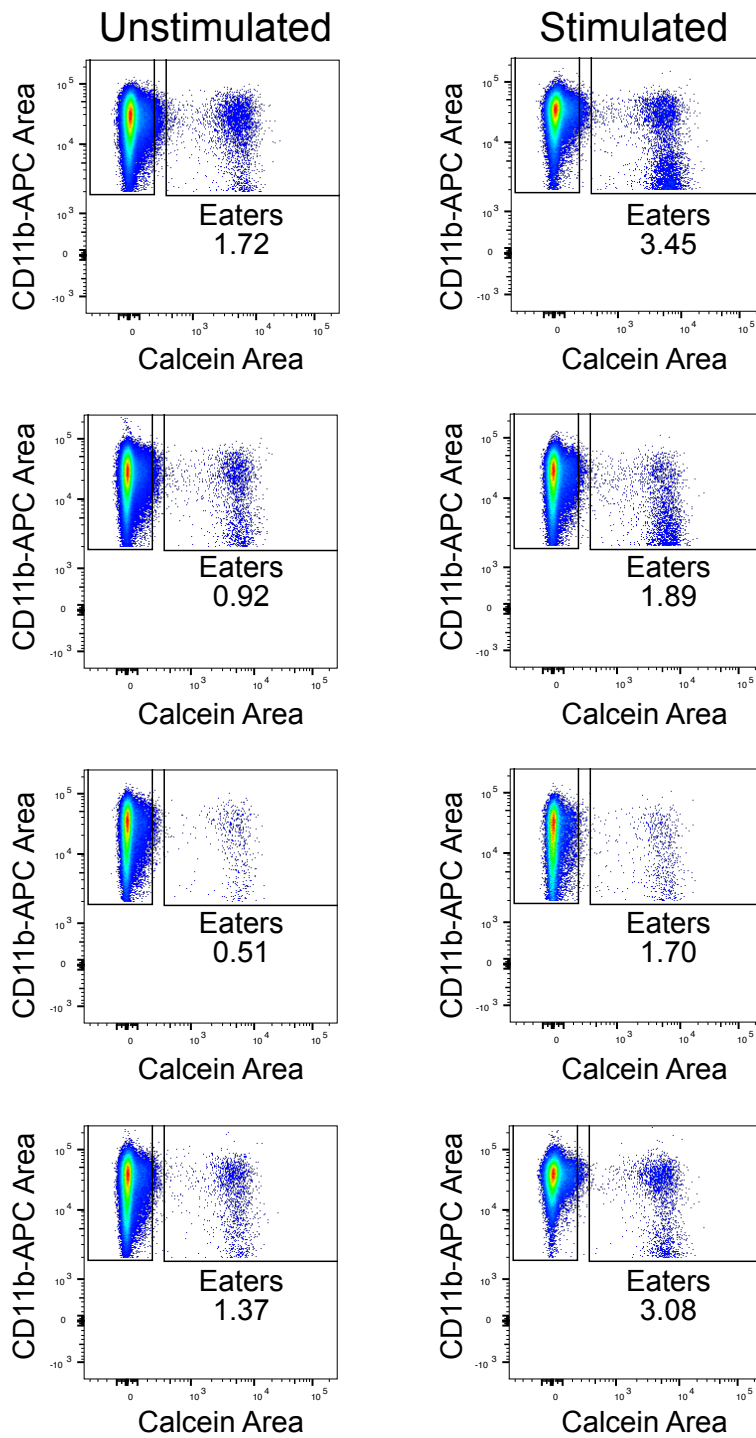


Supplemental Figure 1. Gating strategy for *in vitro* phagocytosis of SW620 colorectal cancer cells by human monocyte derived macrophages. Following debris and doublet removal, phagocytosis was defined as the frequency of CD11b⁺ Calcein⁺ events out of all Pacific Blue⁻ CD11b⁺ events. Numbers represent % frequency of recorded events out of previous gate. Plots are representative of at least 8 biological replicates. Fluorescence minus one (FMO) are shown for macrophage only and cancer cell only controls.

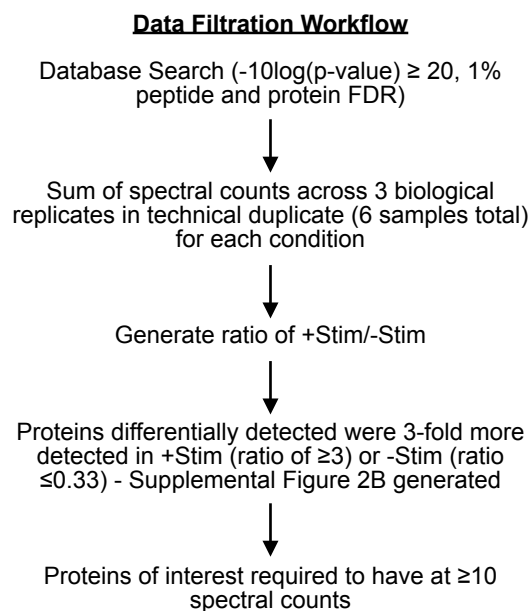
Supplemental Figure 2



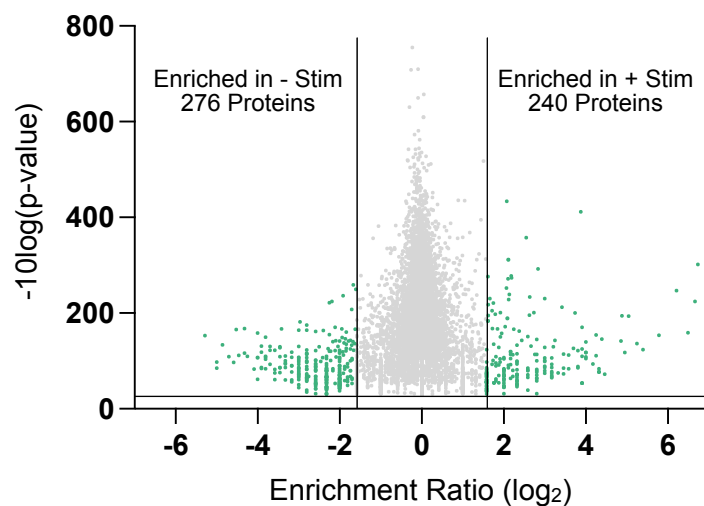
Supplemental Figure 2. Individual FACS plots for each replicate of human monocyte derived macrophage phagocytosis of SW620s colorectal cancer cells with and without interferon gamma stimulation.

Supplemental Figure 3

A

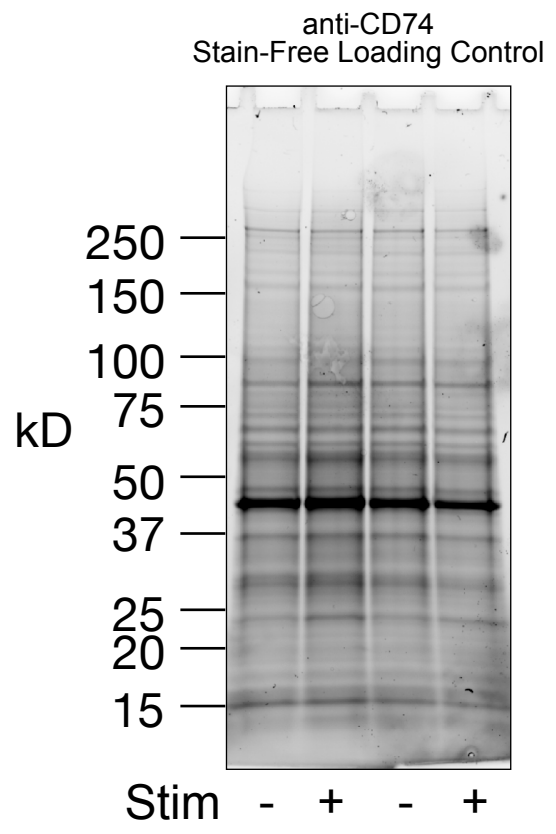
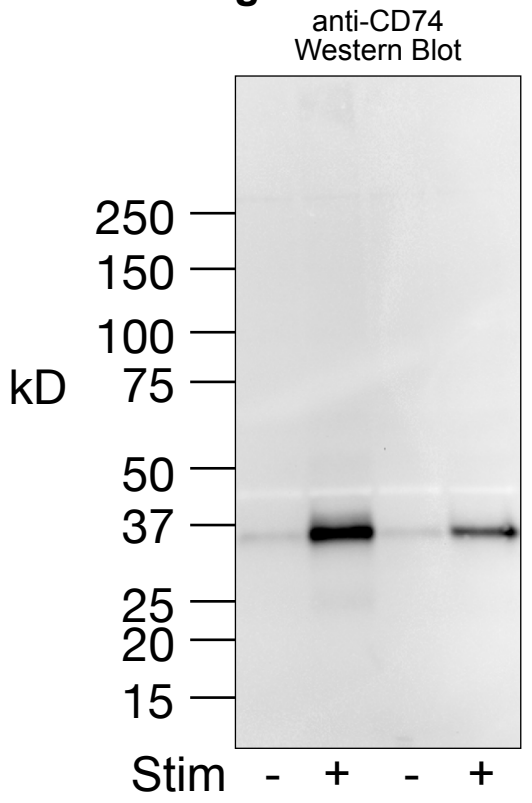


B

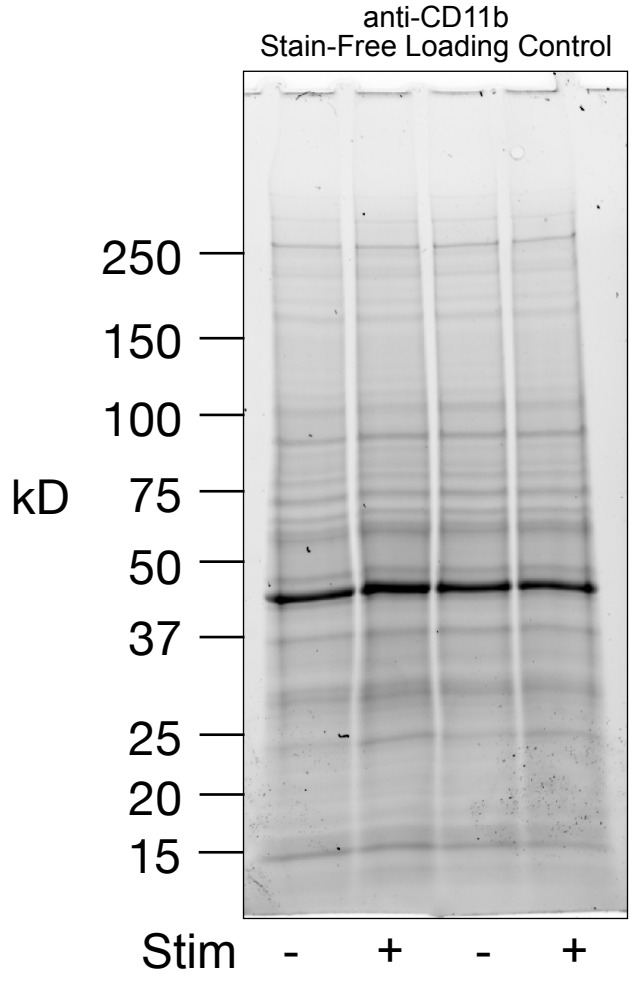
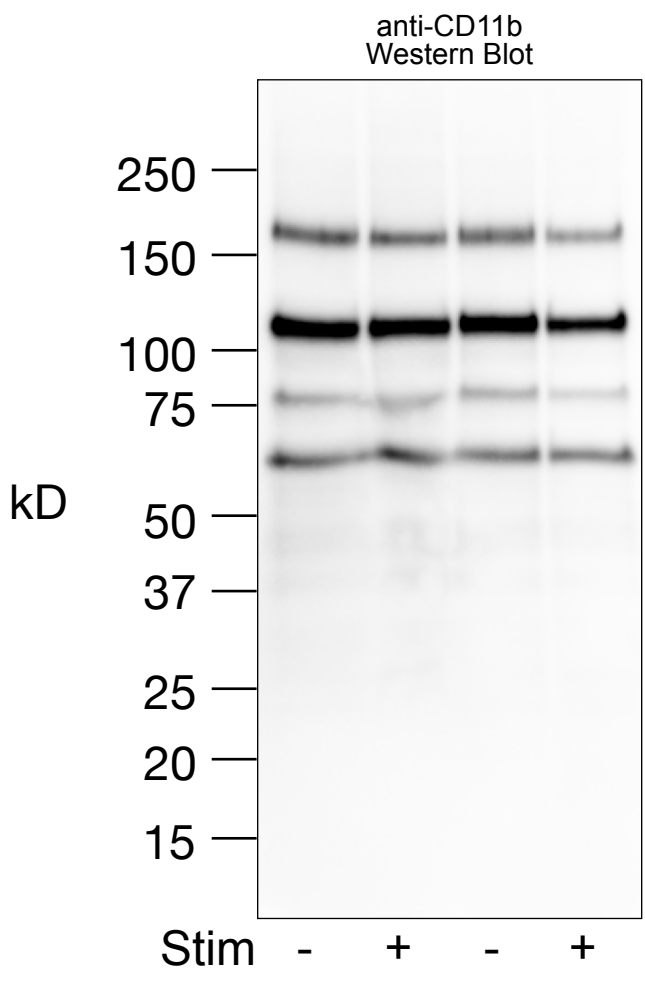


Supplemental Figure 3. Scheme and visualization of data filtration workflow. A. Workflow used to sequentially filter shotgun proteomics data yielded by human monocyte derived macrophages with (+ Stim) and without (- Stim) interferon gamma stimulation. B. Visualization of proteins found to be 3-fold more detected in + Stim (ratio ≥ 3) or - Stim (ratio ≤ 0.33). Data is representative of 3 biological replicates run in technical duplicate.

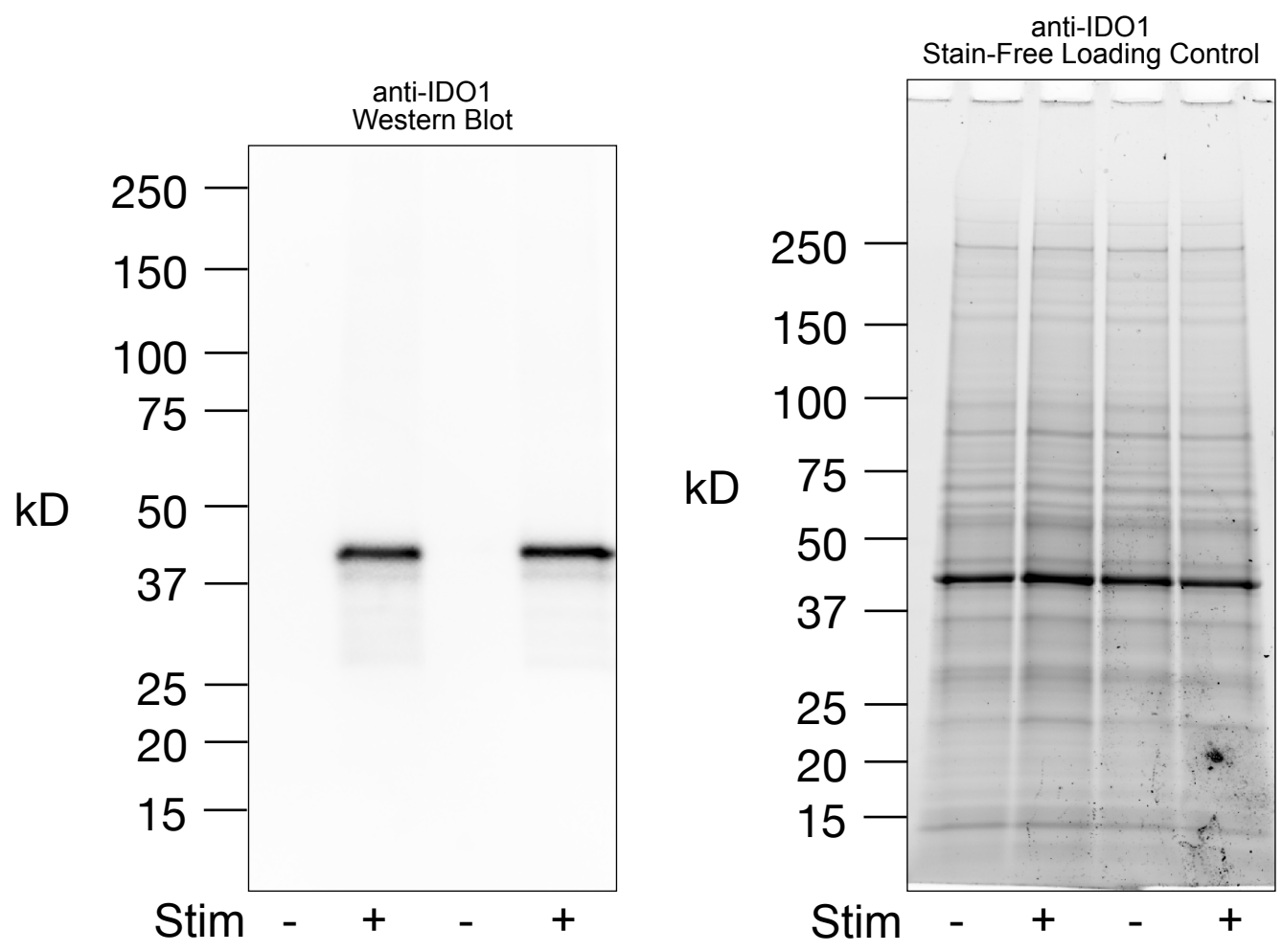
Supplemental Figure 4a



Supplemental Figure 4b

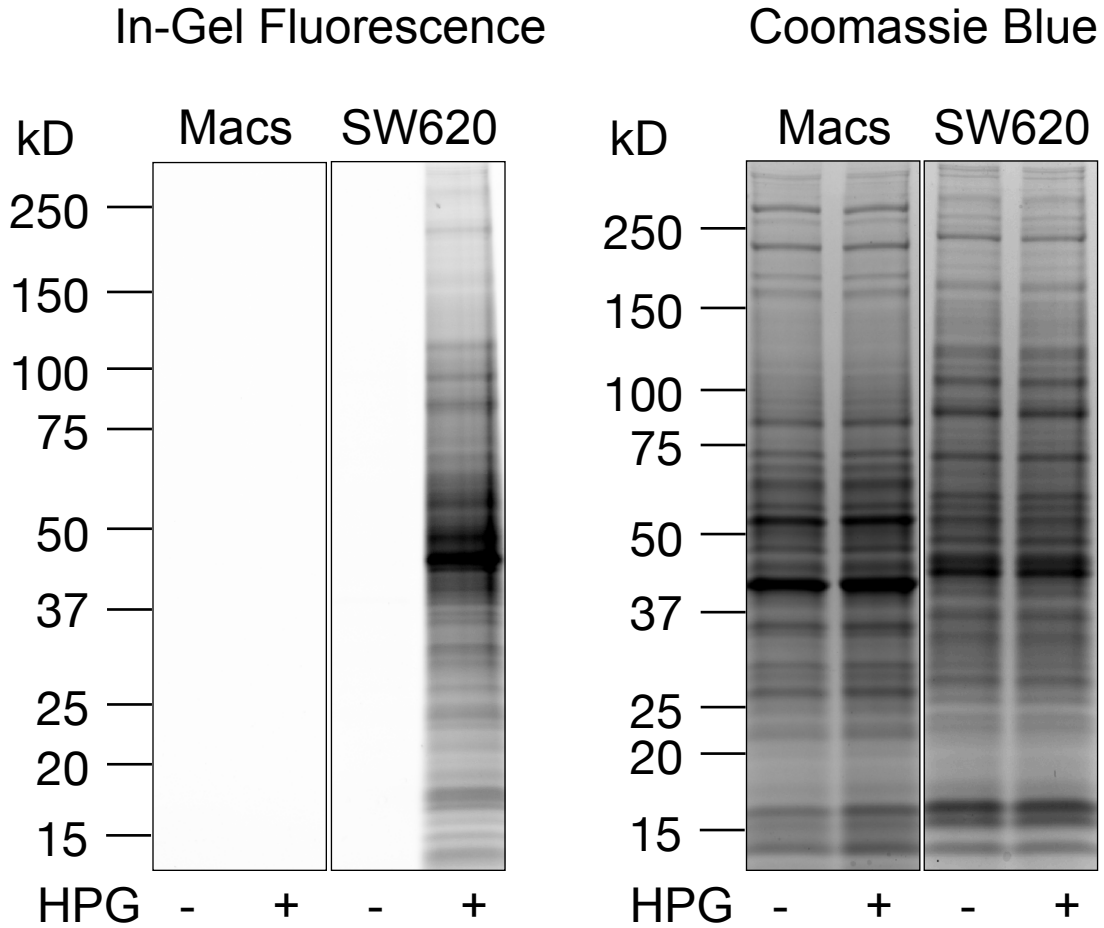


Supplemental Figure 4c



Supplemental Figure 4. Western blot validation of proteins identified in shotgun proteomics and stain-free loading control in two biological replicates with and without interferon gamma stimulation. A. Representative full blot image of CD74 expression (MW 30-40kDa) (Cell Signaling, #77274) . B. Representative full blot image of CD11b expression (MW 170kDa) (Cell Signaling, #49420). C. Representative full blot image of IDO1 expression (MW 43kDa) (Cell signaling, #12006).

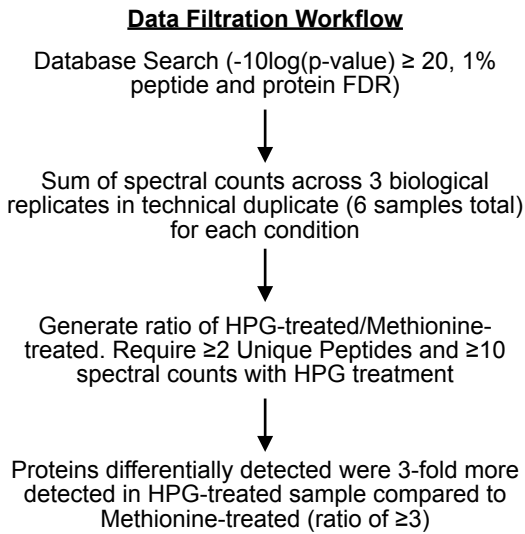
Supplemental Figure 5



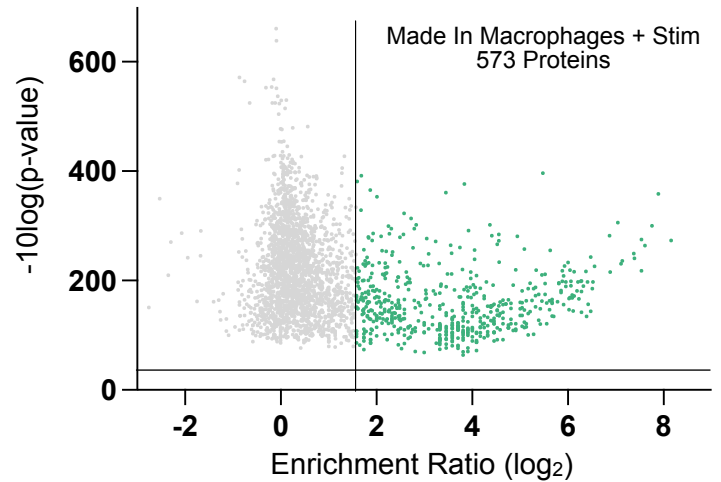
Supplemental Figure 5. Comparison of homopropargylglycine (HPG) incorporation by human monocyte derived macrophages (Macs) and SW620 colorectal cancer cells. Cells were treated with HPG or methionine (4mM, 2hrs.) For gel analysis, 15 μ g of sample was resolved by SDS-PAGE. Gel was imaged and stained with Coomassie Protein Stain. Gel images are from same gel with no alterations but separated by additional experiments, which are not shown.

Supplemental Figure 6

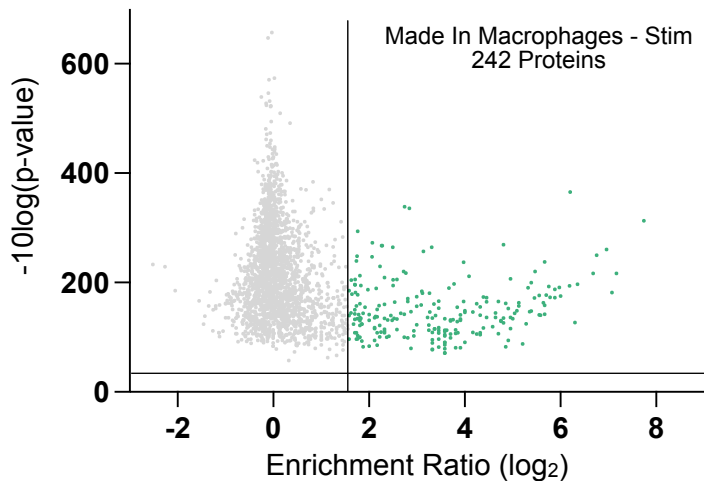
A



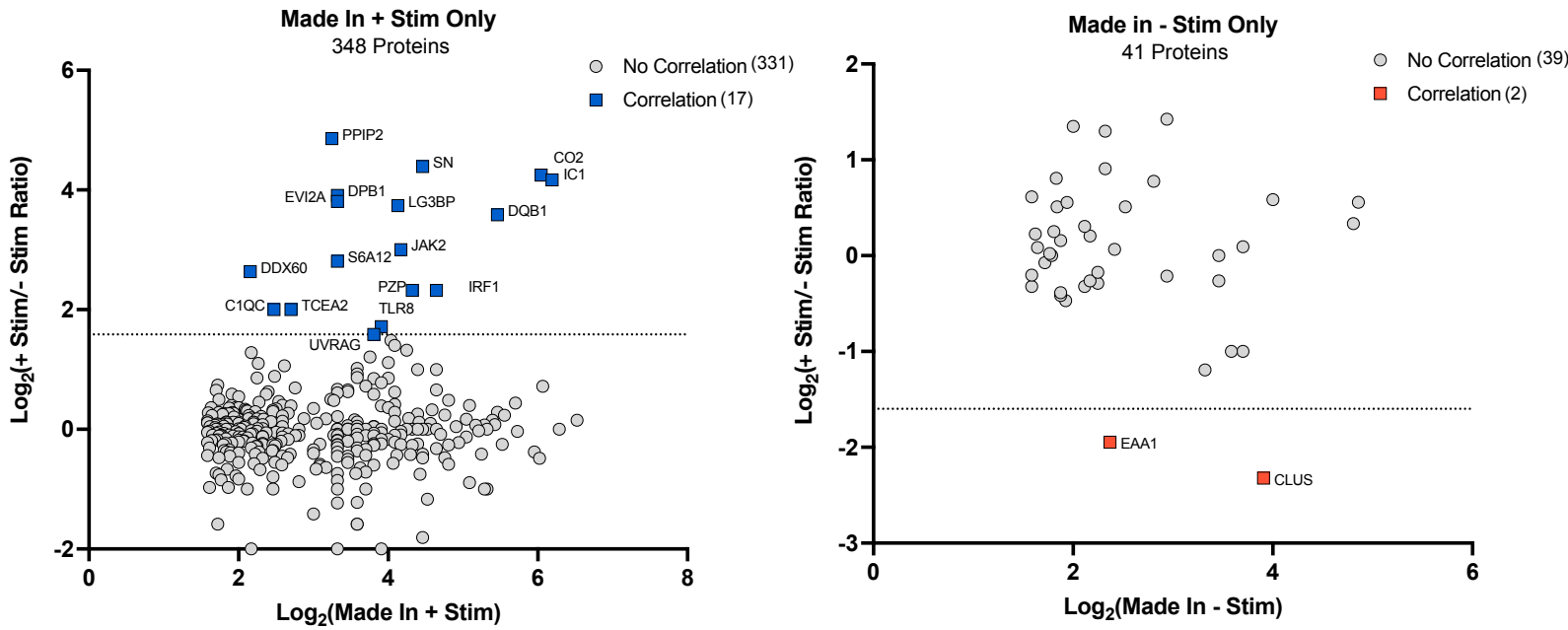
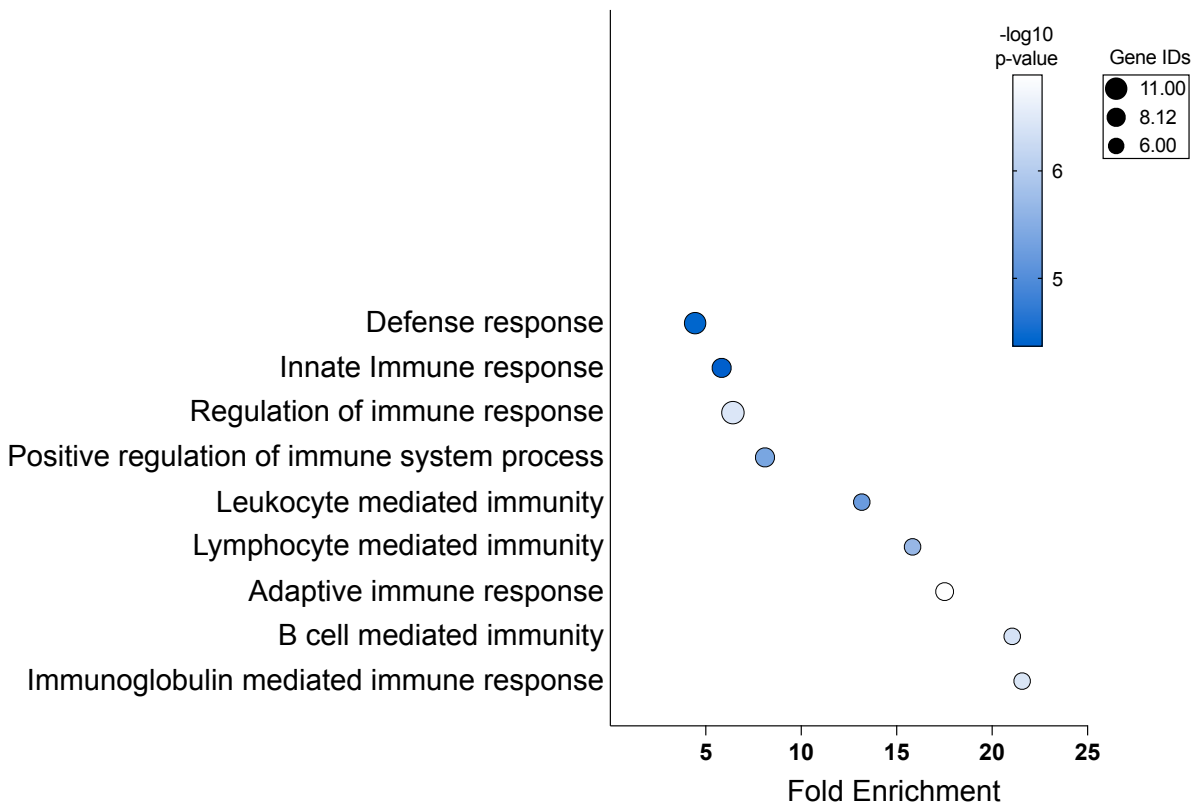
B



C



Supplemental Figure 6. Data filtration workflow and visualization for homopropargylglycine (HPG)-treated human monocyte derived macrophages with and without interferon gamma stimulation. A. Sequential data analysis workflow carried out for 3 biological replicates run in duplicate. B. Visualization of proteins found to be 3-fold more detected in HPG-treated compared to methionine-treated in stimulated macrophages (Made in + Stim). C. Visualization of proteins found to be 3-fold more detected in HPG-treated compared to methionine-treated in unstimulated macrophages (Made in - Stim).

A**B**

Supplemental Figure 7. Comparison of HPG and Whole Protein Datasets. A. There is low correlation between “Made in + Stim”/“Made in - Stim” and + Stim/-Stim whole protein analyses. B. Statistical overrepresentation analysis of biological processes in overlap between “Made in + Stim” Dataset and “+ Stim”. Statistical analysis via Fisher’s exact test and correction via False Discovery Rate.

Supplemental tables

- Table 1. Whole protein base filter (independent donor)
- Table 2. Whole protein combined sum (sum 3 donor)
- Table 3. WP + Stim
- Table 4. WP - Stim
- Table 5. Panther enrichment (biolpol, molfunc, cell com)
- Table 6. All hpg/met, basic filter of at least 5 spectral counts from the HPG-enriched sample and a ratio of at least 3 above methionine control
- Table 7. Combined data from all 3 donors and their technical replicates, for a total of 6 replicates per condition
- Table 8. “Made in - Stim”
- Table 9. “Made in + Stim”
- Table 10. Made in both - Stim and + Stim
- Table 11. Breakdown of “Made in - Stim”-specific and “Made in + Stim”-specific
- Table 12. Panther enrichment of overlap between + Stim and “Made in + Stim” Only