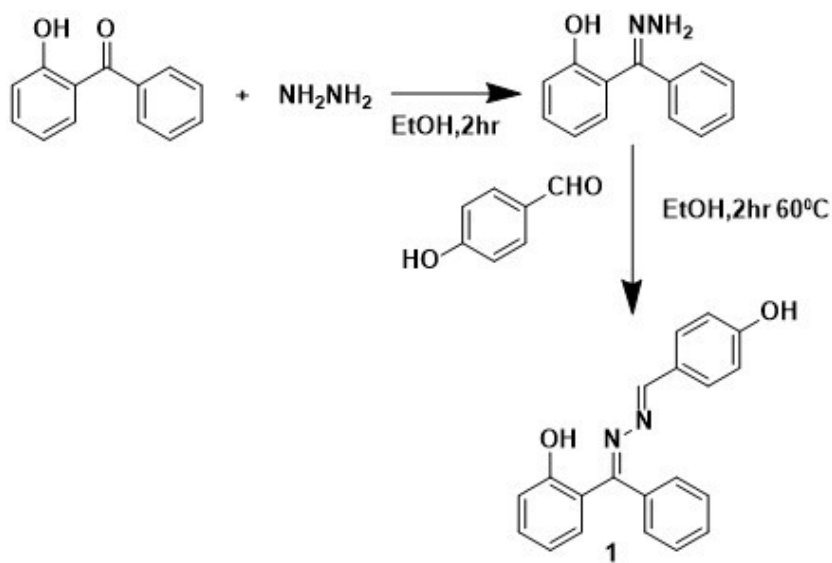
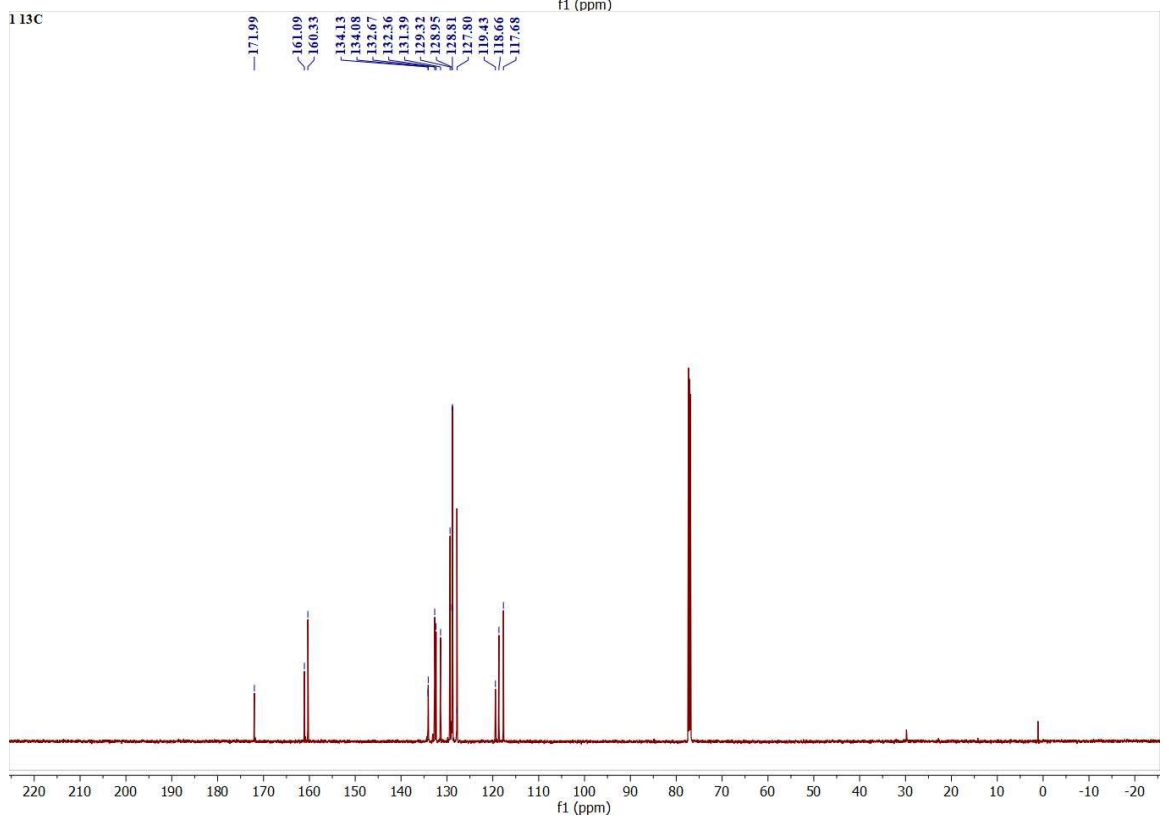
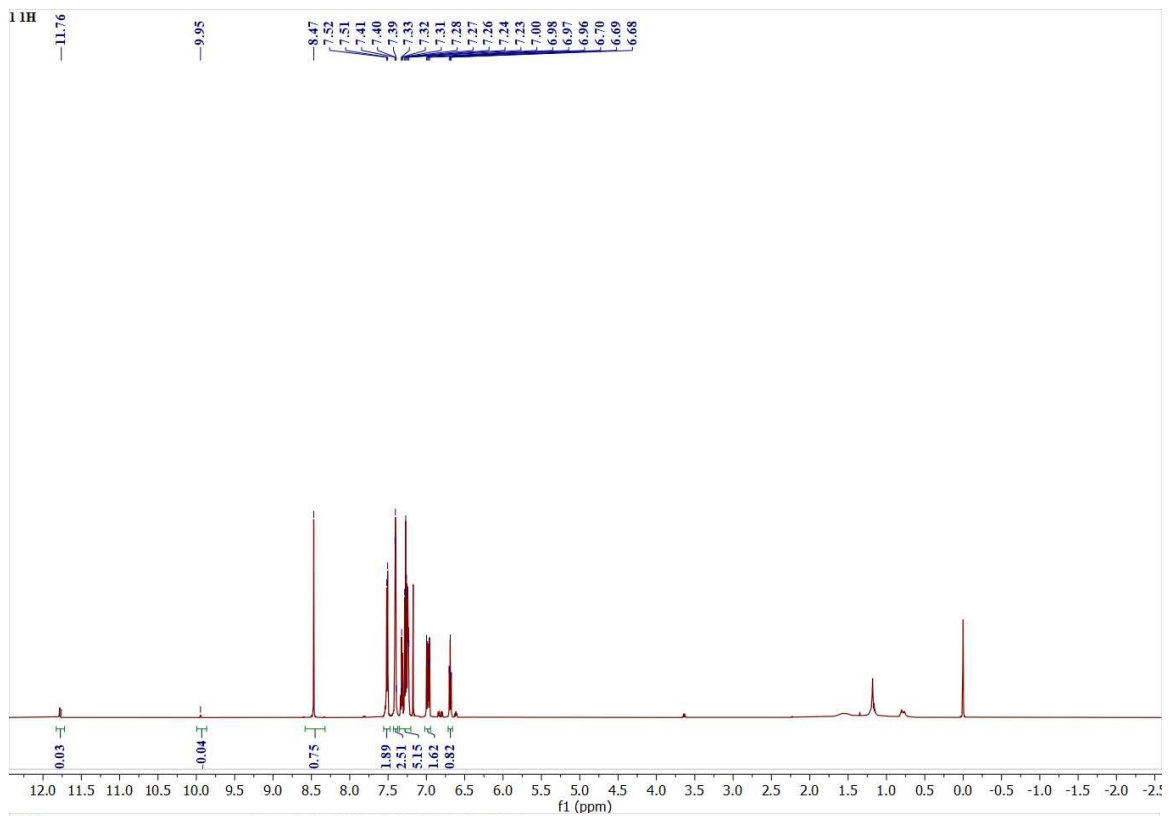


### Electronic Supplementary Information (ESI)

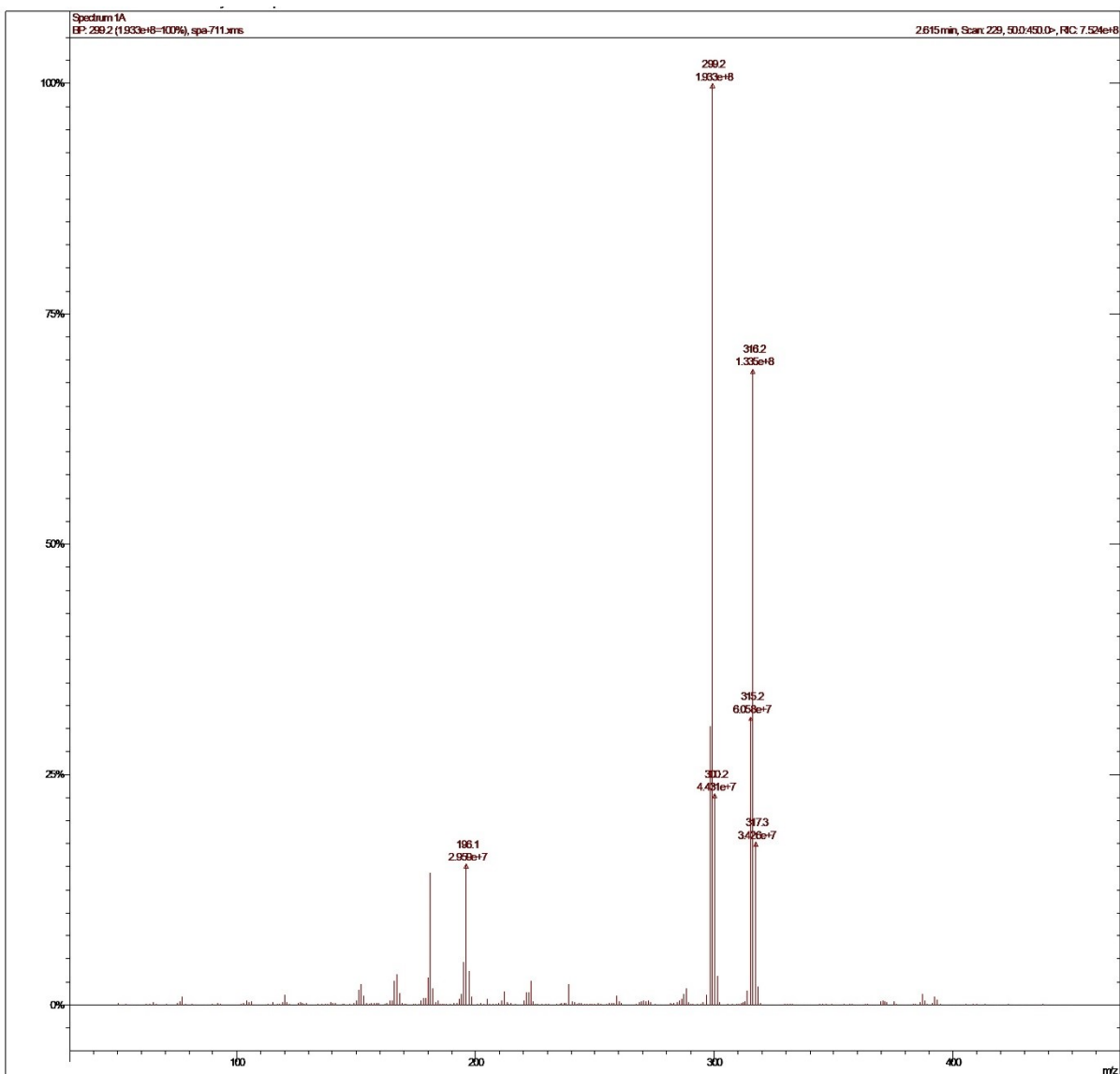
**Hexagon and network structured organic geometrical isomers with distinct intramolecular H-bonding and stimuli-induced self-reversible fluorescence switching**



Scheme S1. Synthesis of **1**.



**<sup>1</sup>H & <sup>13</sup>C NMR of 1**



**I:** m/z calcd for  $C_{20}H_{16}N_2O_2$  (M + H): 316.12, found: 316.2.

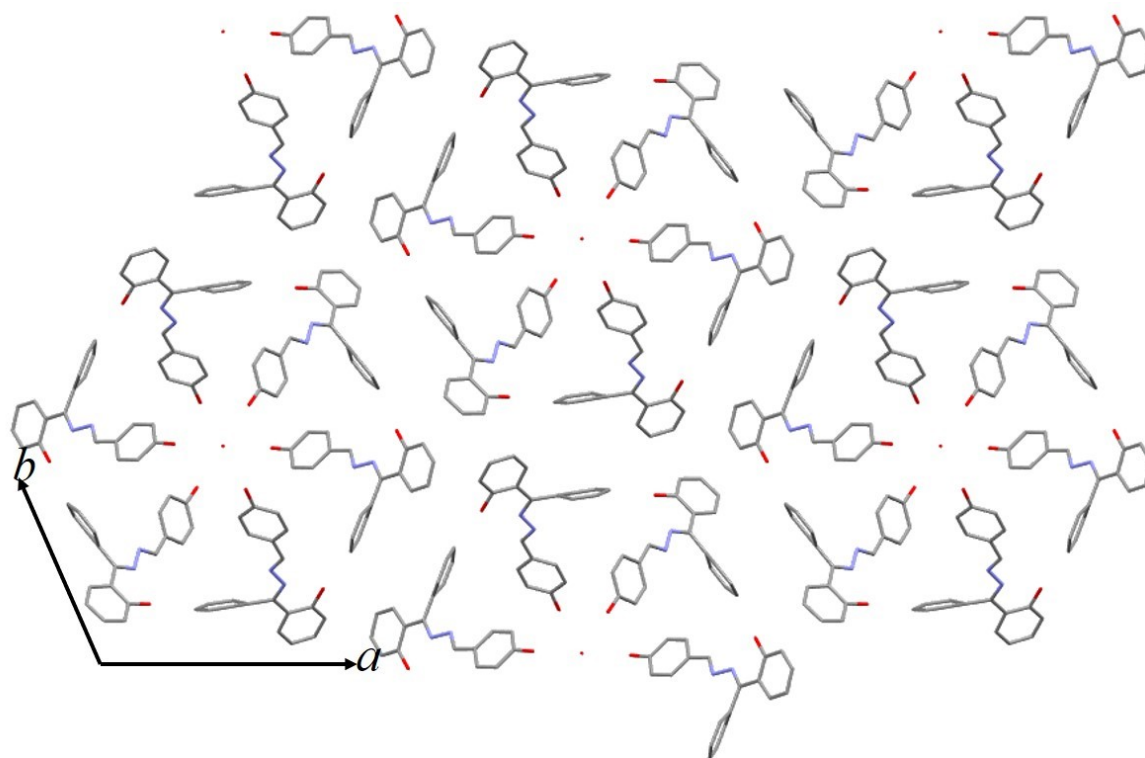


Figure S1. Molecular packing in the crystal lattice of **1a**. H-atoms are omitted for clarity. C (grey), N (blue) and O (red).

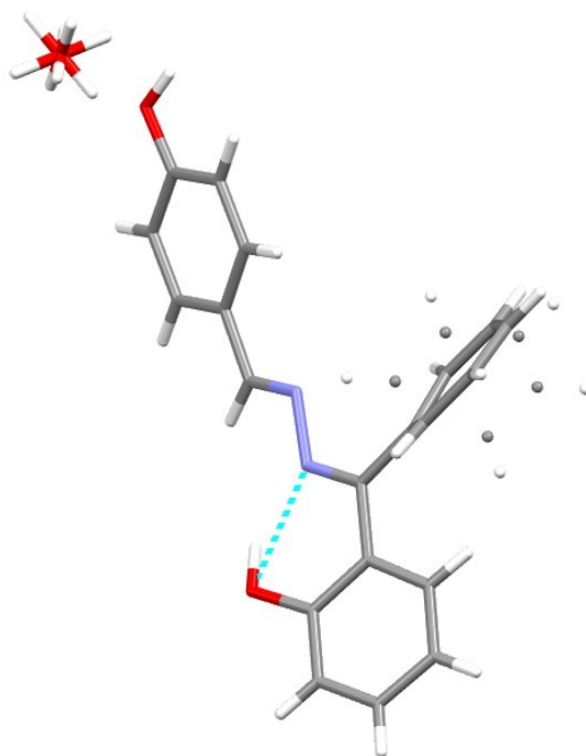


Figure S2. Disordered molecular structure of 1 in the crystal lattice.

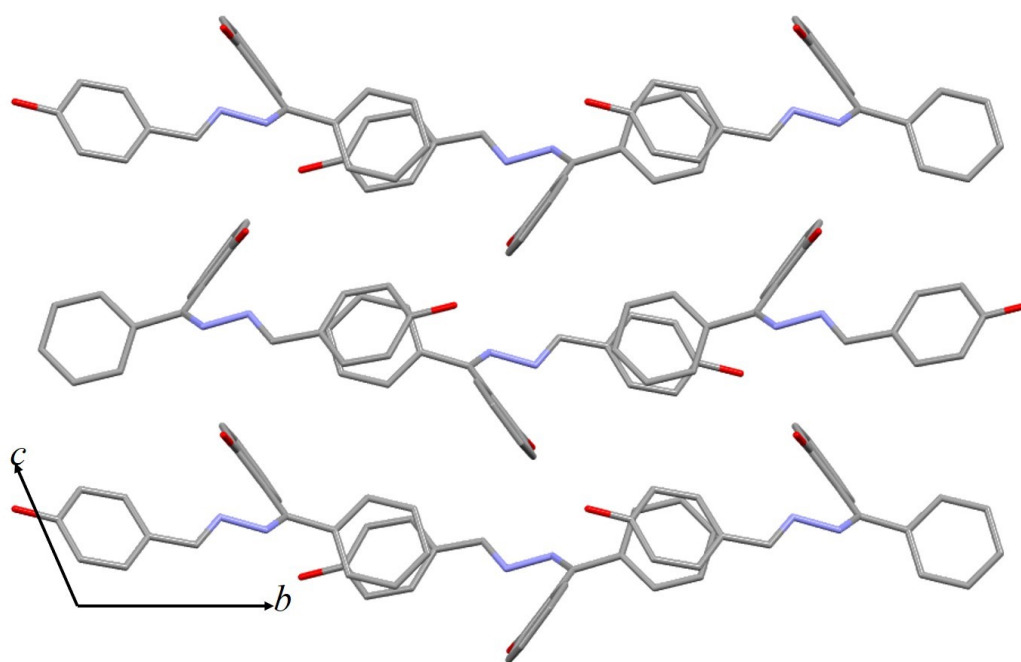


Figure S3. Molecular packing in the crystal lattice of 1b. H-atoms are omitted for clarity. C (grey), N (blue and O (red).

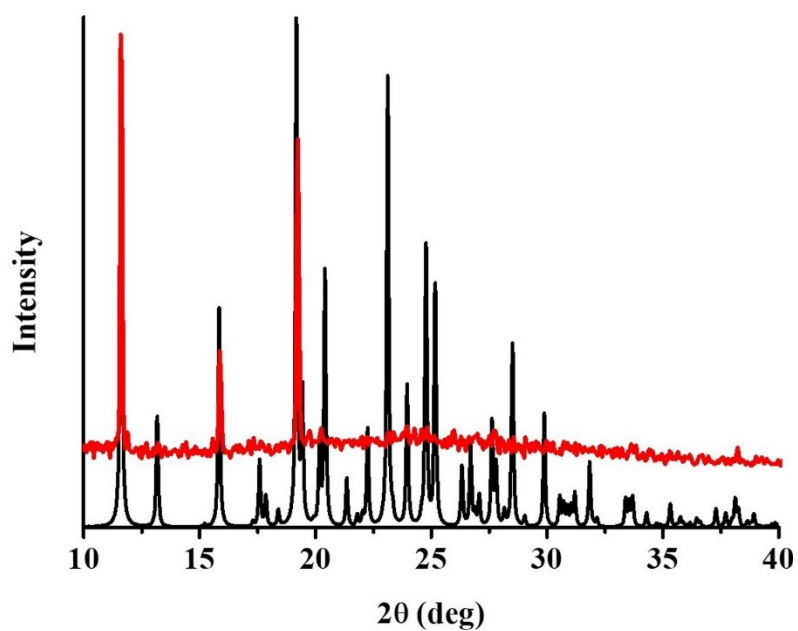


Figure S4. Comparison of simulated (black) and experimental (red) PXD pattern of 1a.

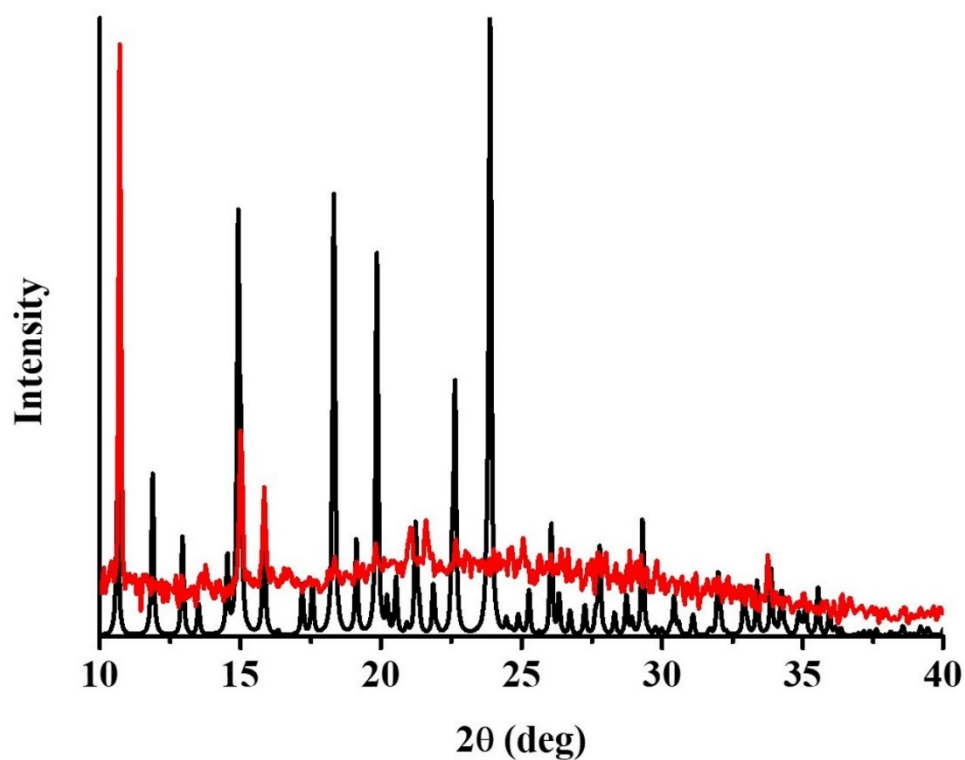


Figure S5. Comparison of simulated (black) and experimental (red) PXD pattern of 1b.

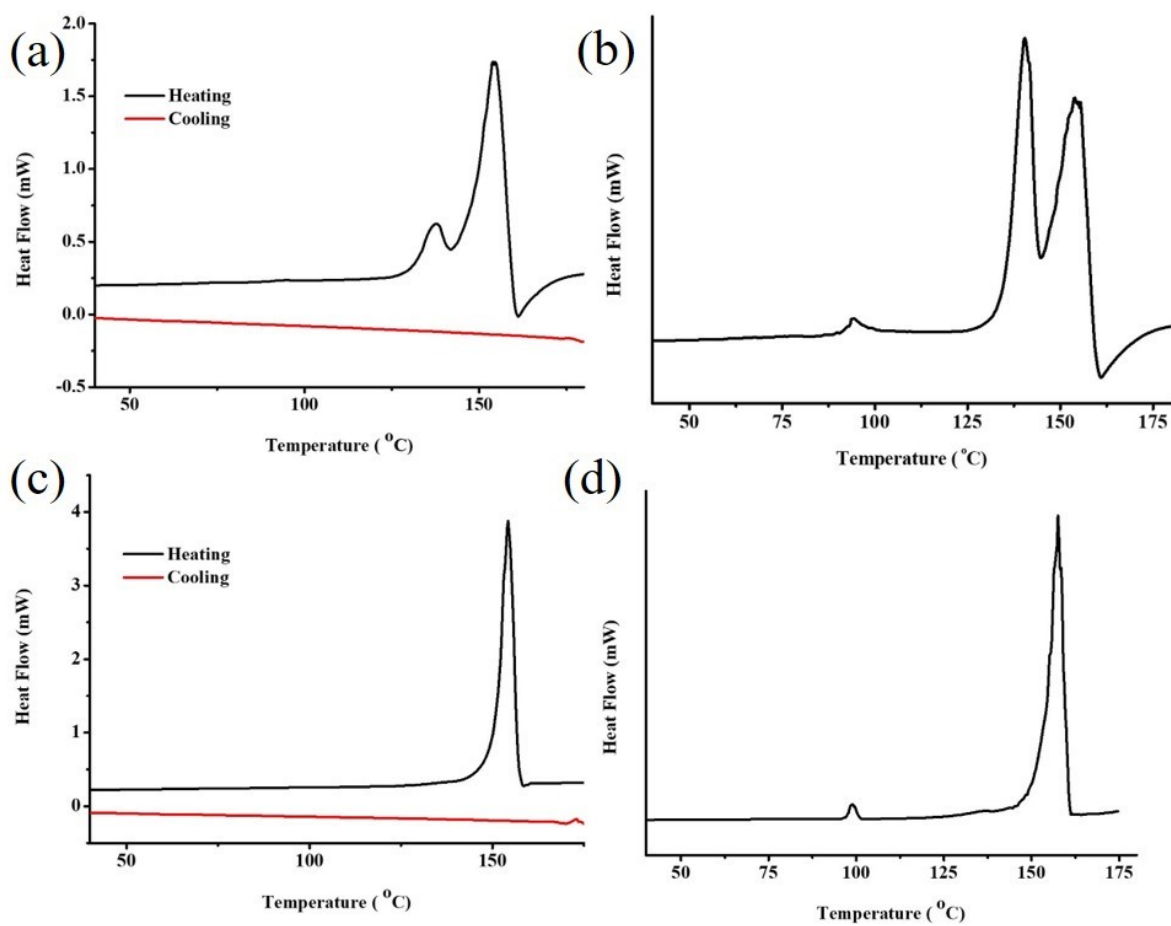


Figure S6. DSC of (a, b) **1a** and (c, d) **1b**. (a, c) Heating-cooling cycle of **1a** (a) and **1b** (c) crystals and (b, d) heating of the corresponding compounds crushed powders.