

Electronic supplementary information

High temperature molecular motions within a model protomembrane architecture

Loreto Misuraca^{a,b}, Tatsuhito Matsuo^{a,b,c}, Aline Cisse^{a,b}, Josephine LoRicco^d, Antonio Caliò^d, Jean-Marc Zanotti^b, Bruno Demé^b, Philippe Oger^{d,*} and Judith Peters^{c,d,e*}

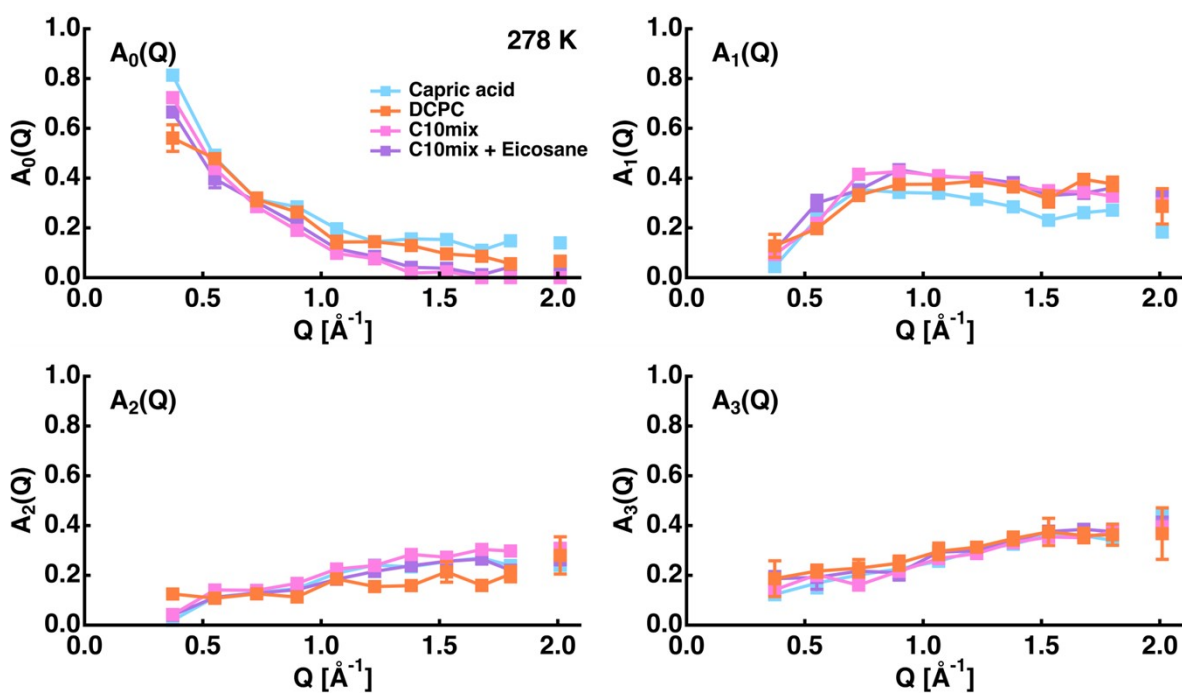


Figure S1: Amplitudes A_0 to A_3 of all samples at 278 K.

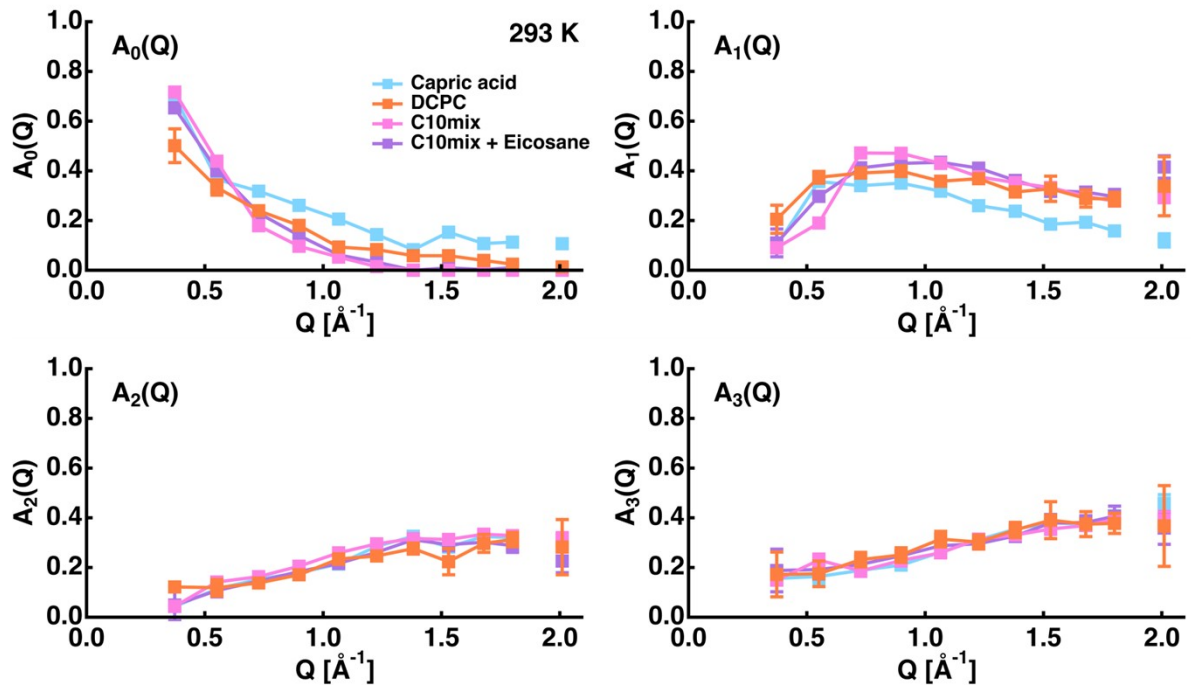


Figure S2: Amplitudes A_0 to A_3 of all samples at 293 K.

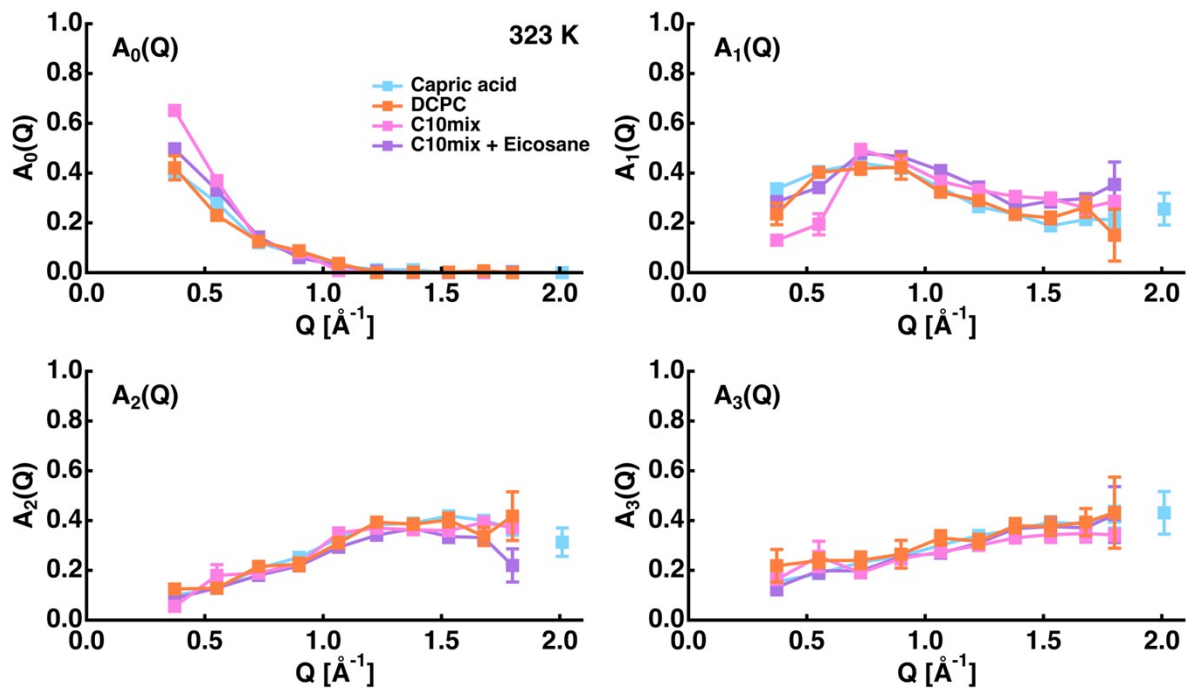


Figure S3: Amplitudes A_0 to A_3 of all samples at 323 K.

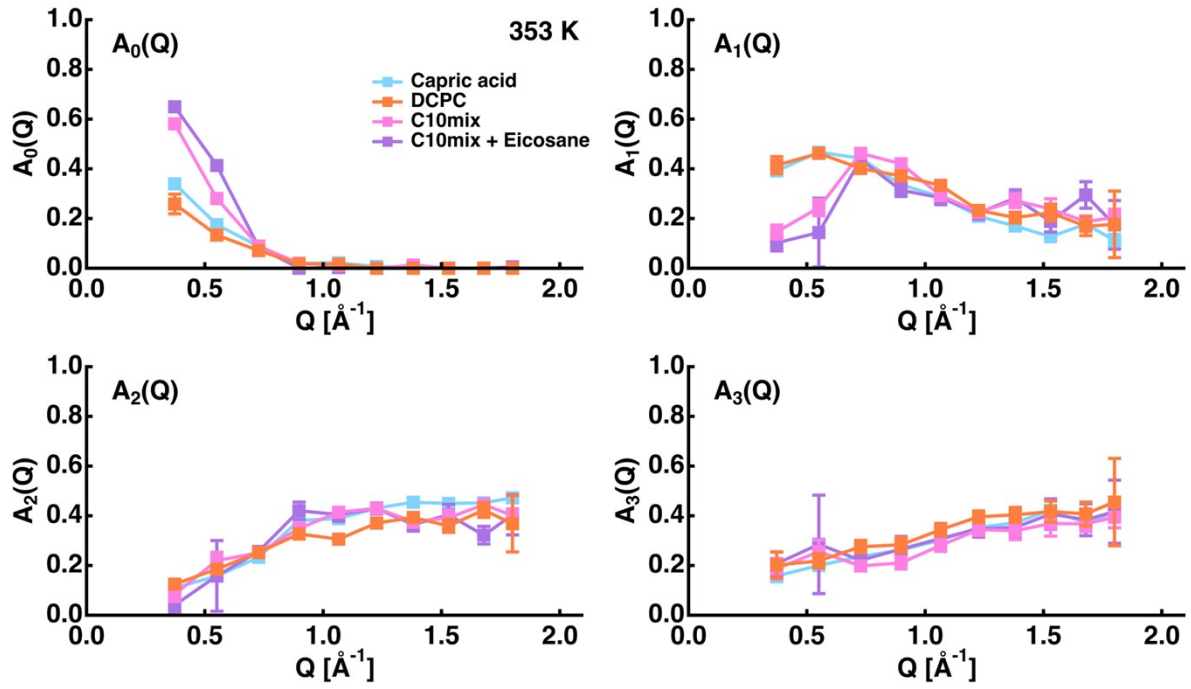
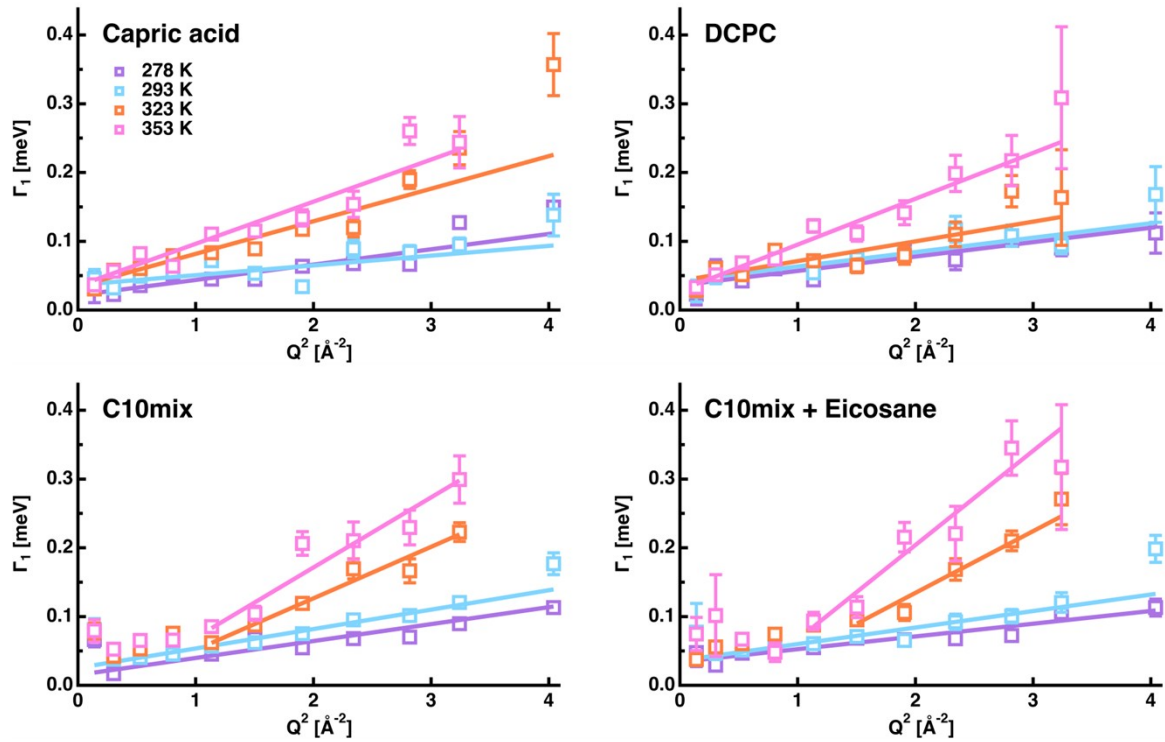
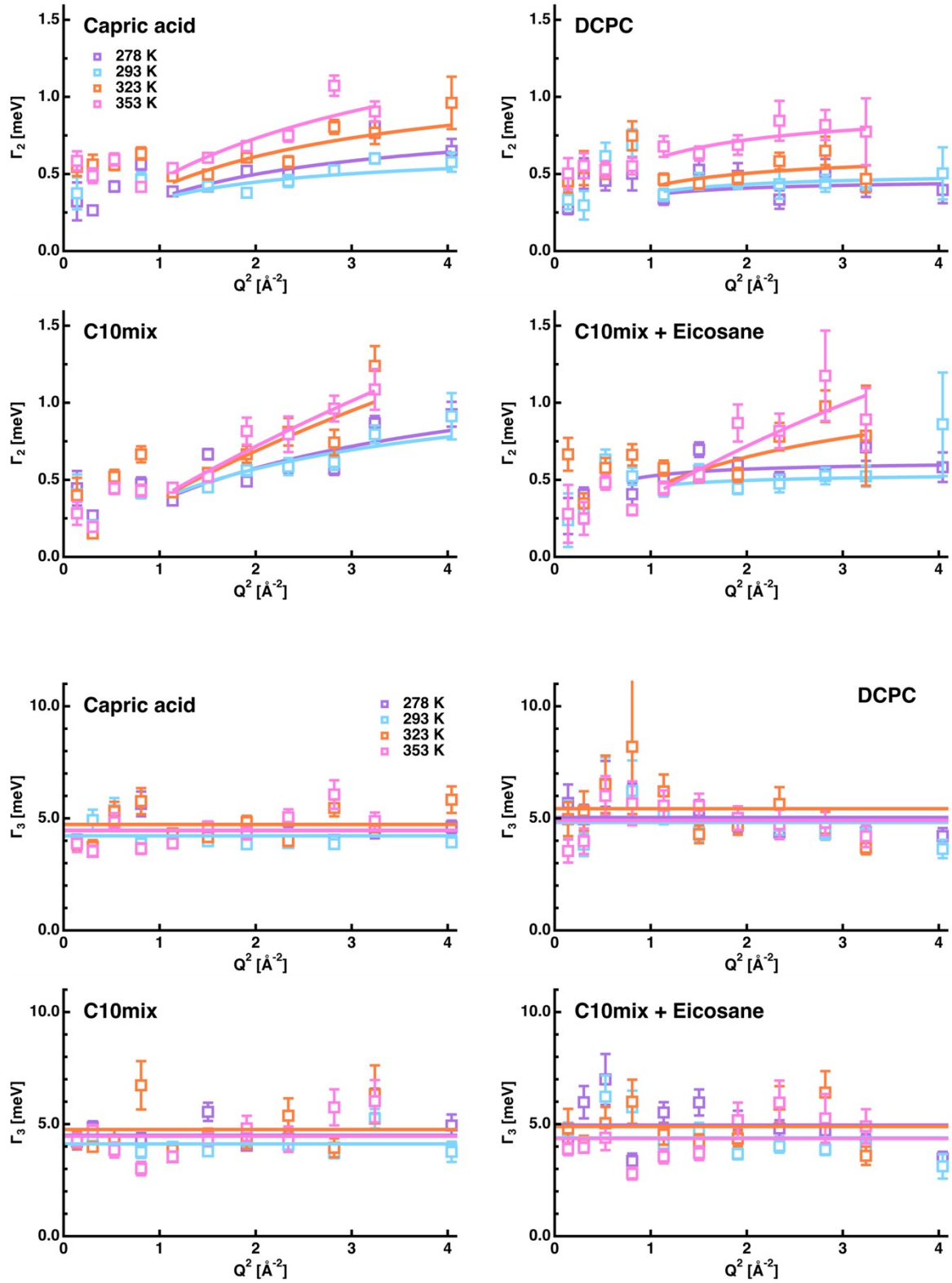
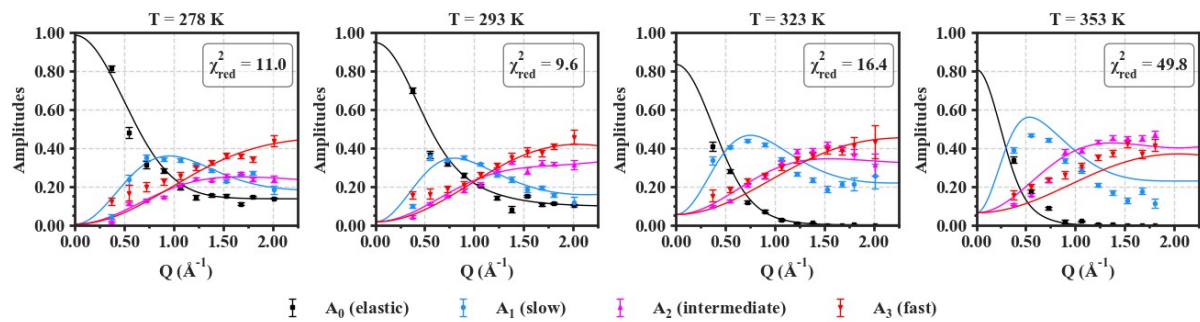


Figure S4: Amplitudes A_0 to A_3 of all samples at 353 K.

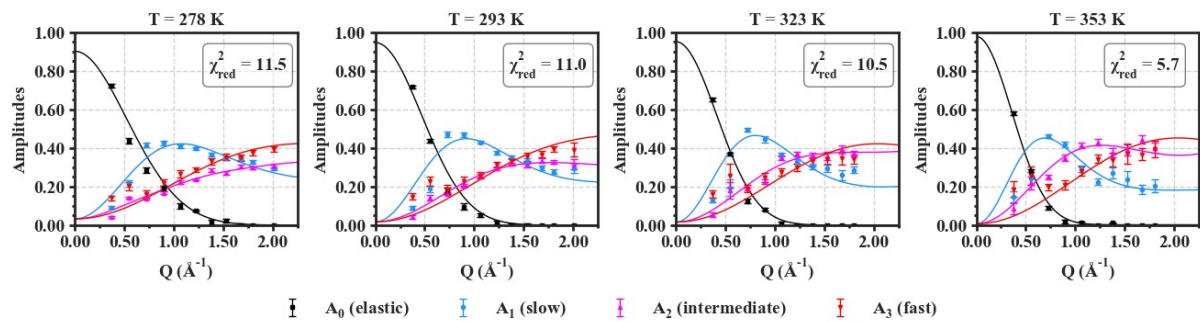




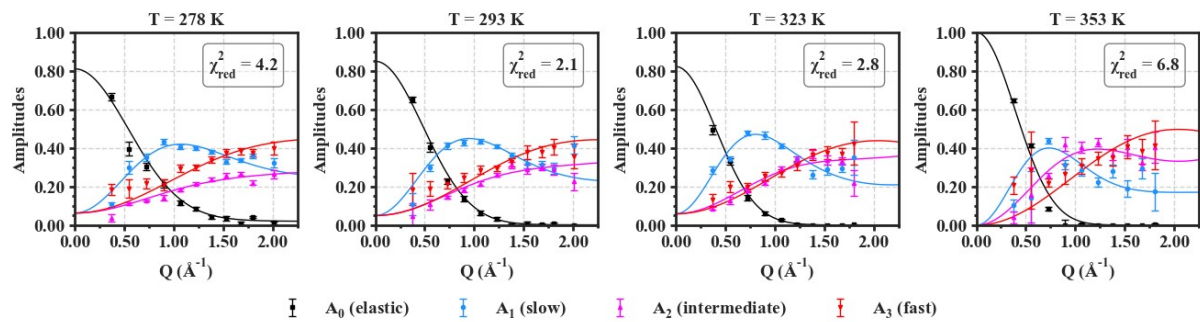
Capric acid:



C10 mix:



C10 mix + eicosane:



DCPC:

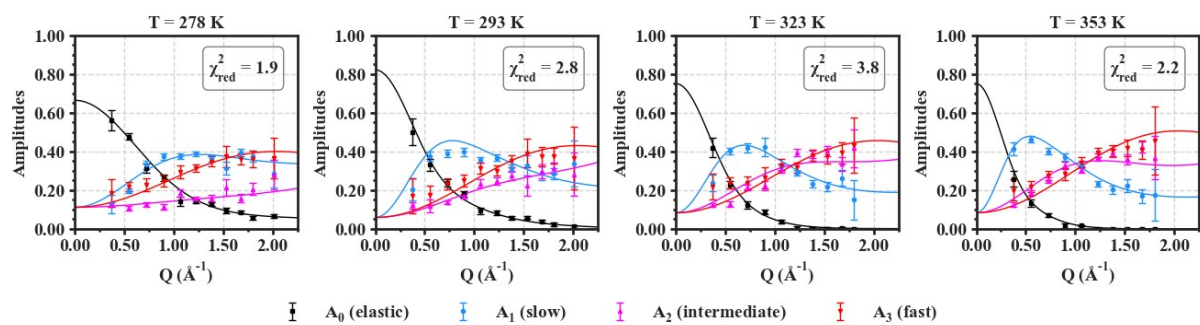


Figure S8: Fits of the amplitudes for all four samples. Error bars are within symbols if not shown.