

A BCL-XL potent

BCL-XL $K_i = 0.01$ nM



A-1331852

BCL-2 $K_i = 6$ nM

BCL-XL $K_i \leq 0.5$ nM
PDB ID: 4QNG



ABT-263

BCL-2 $K_i \leq 1$ nM
PDB ID: 6QGH

BCL-XL $K_i = 48$ nM

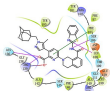


ABT-199

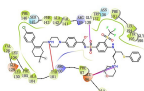
BCL-2 $K_i \leq 0.01$ nM
PDB ID: 6O0K

BCL-2 potent

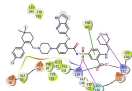
B



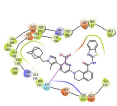
BCL-XL/A-1331852



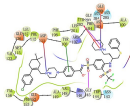
BCL-XL/ABT-263



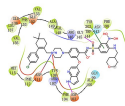
BCL-XL/ABT-199



BCL-2/A-1331852



BCL-2/ABT-263



BCL-2/ABT-199