

Supplementary Material

Chiral molecule induced valley polarization enhancement of MoS₂

Guangcun Gao^{1#}, Jintong Zhu^{1#}, Songrui Wei^{2#}, Yang Cao¹, Wei Huang¹, Zhongxin Liu¹, Jieqiong Wang^{*1} and Yijun Shen^{*1}

¹State Key Laboratory of Marine Resource Utilization in South China Sea, School of Chemical Engineering and Technology, School of Materials Science and Engineering, Hainan University, Haikou 570228, P. R. China

²College of Physics and Optoelectronic Engineering, Shenzhen University, Nanshan Ave 3688, Shenzhen, Guangdong, 518080, P. R. China

^a) Author to whom correspondence should be addressed: wangjq@hainanu.edu.cn

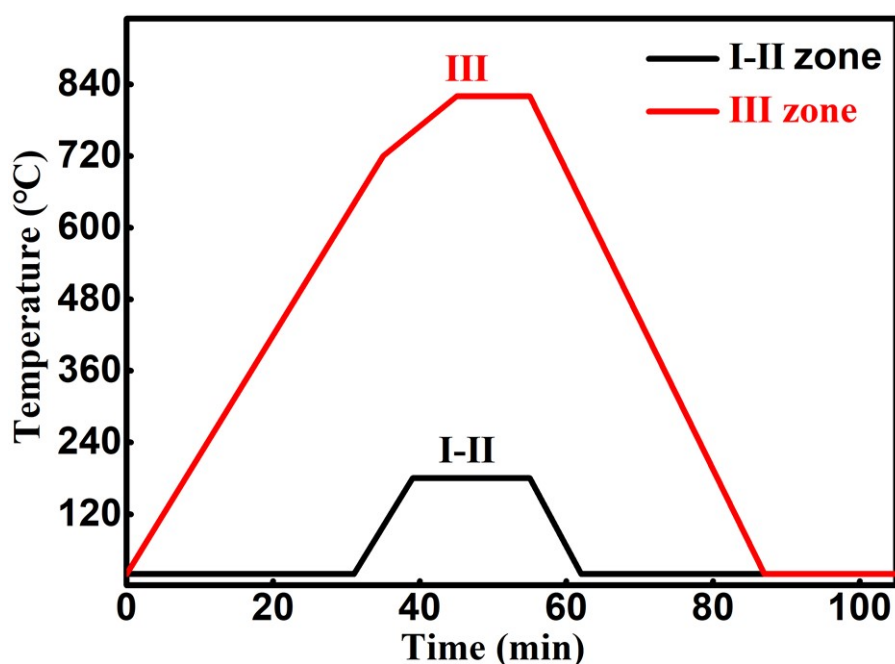


FIG. S1. Graph of quartz tube temperature zone control about preparing MoS₂ monolayer.

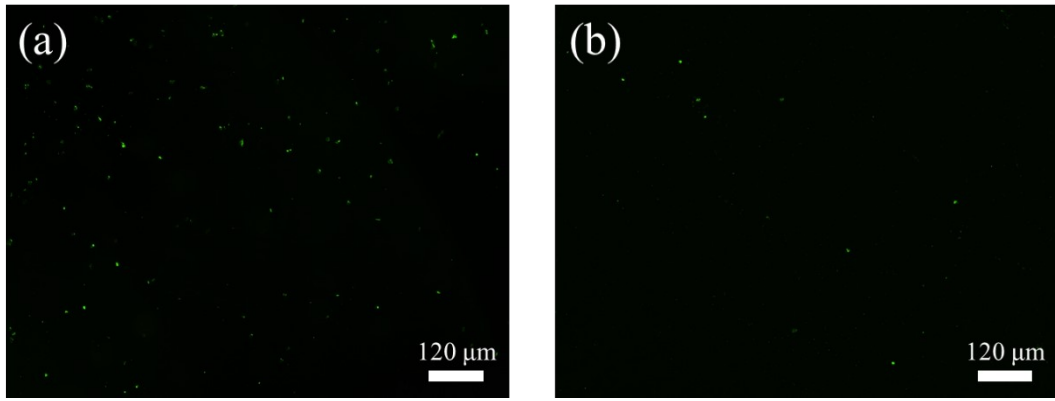


FIG. S2. Representative images examined under a fluorescence microscope. (a) L-histidine-coated MoS₂ monolayers. (b) DL-histidine-coated MoS₂ monolayers.