

# Bicyclopeptides: a new class of ligands for Cu(II) ions

## Supplementary materials

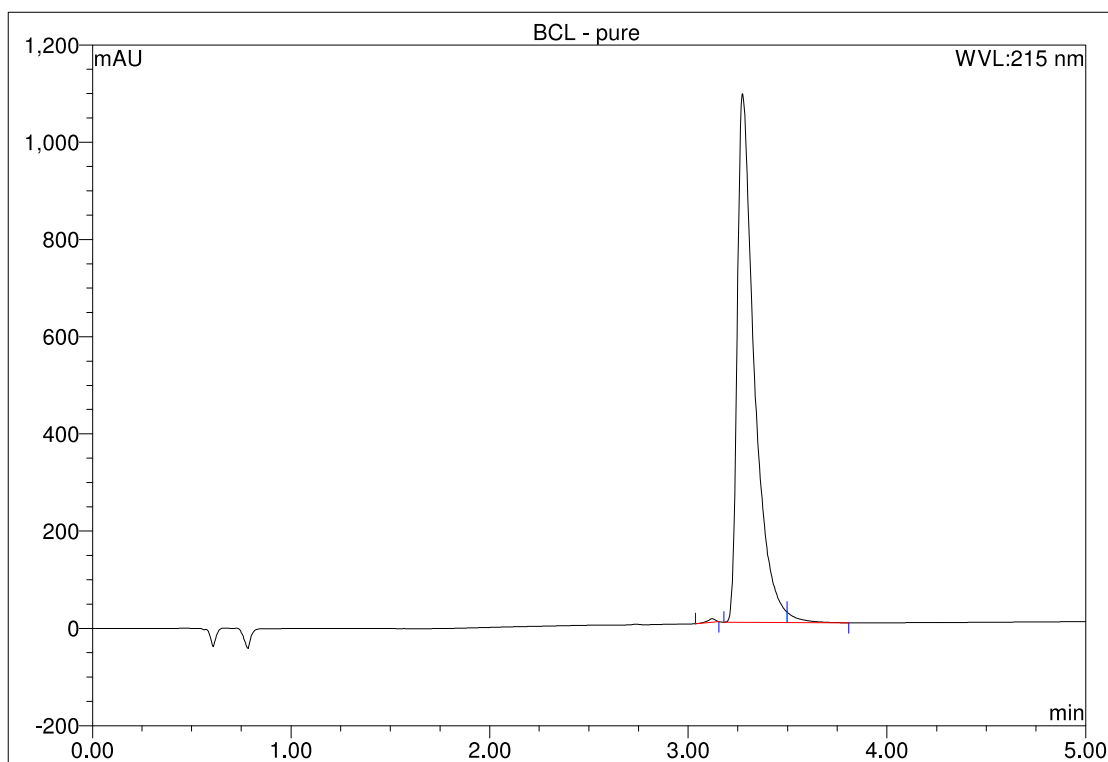
Aleksandra Marciniak<sup>a</sup>, Lorenzo Pacini<sup>b,c</sup>, Anna Maria Papini<sup>b,c</sup>, Justyna Brasuń<sup>a\*</sup>

<sup>a</sup> Department of Inorganic Chemistry, Wrocław Medical University, Borowska 211A, 50-556 Wrocław, Poland

<sup>b</sup> Interdepartmental Research Unit of Peptide and Protein Chemistry and Biology, Department of Chemistry “Ugo Schiff”, University of Florence, Via Della Lastruccia 13, 50019 Sesto Fiorentino, Italy

<sup>c</sup> MoD&LS Laboratory, University of Florence, Centre of Competences RISE, Via Madonna del Piano 6, 50019 Sesto Fiorentino, Italy

\*Correspondence: e-mail: justyna.brasun@umw.edu.pl, telephone: +48 71 784 03 30, fax number: +48 71 784 03 36, 0000-0001-6641-4853



No.	Ret.Time min	Peak Name	Height mAU	Area mAU*min	Rel.Area %	Amount	Type
1	3.12	n.a.	7.524	0.319	0.29	n.a.	BMB*
2	3.27	n.a.	1086.742	107.843	98.55	n.a.	BM *
3	3.50	n.a.	20.091	1.273	1.16	n.a.	MB*
<b>Total:</b>			1114.357	109.434	100.00	0.000	

**Figure S1.** RP-UHPLC trace of BCL peptide. Thermo Scientific Ultimate 3000 equipped with a diode array detector; C18 column Waters Acquity CSH™ (130Å, 1.7 μm, 2.1 × 100 mm); temperature 318.15°K; flow: 0.5 mL/min. Eluents: 0.1% TFA in H<sub>2</sub>O (A) and 0.1% TFA in CH<sub>3</sub>CN (B); λ 215 nm; gradient: 5-95% B in A in 5 min. Rt 3.27 min.