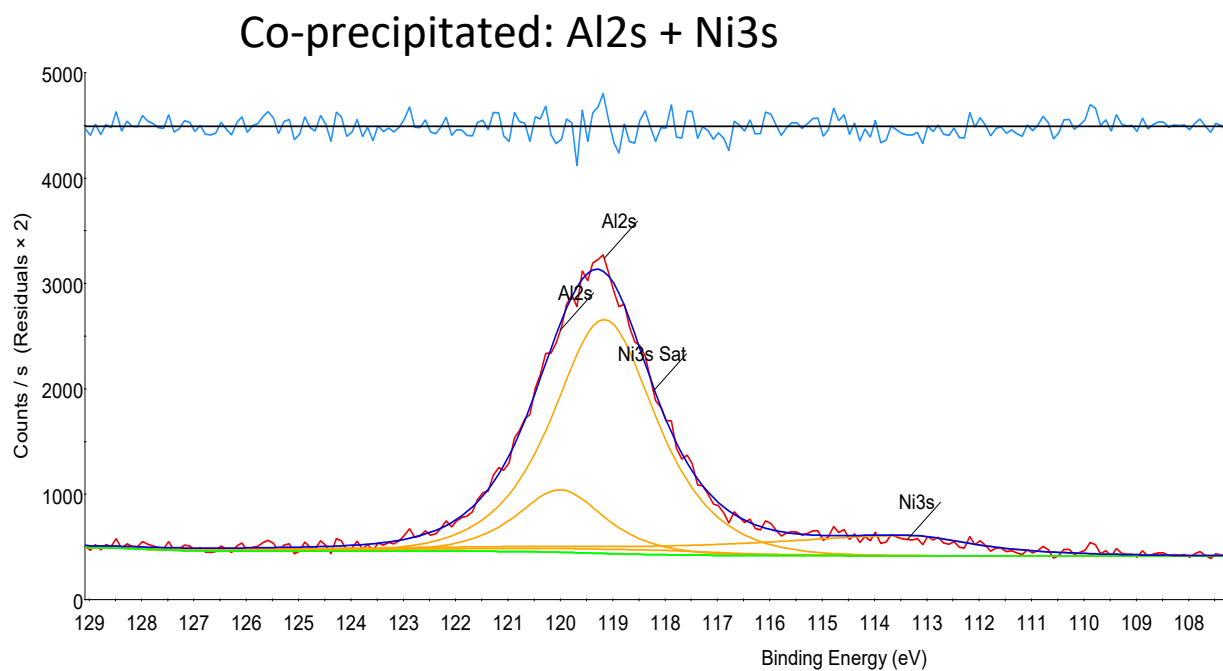
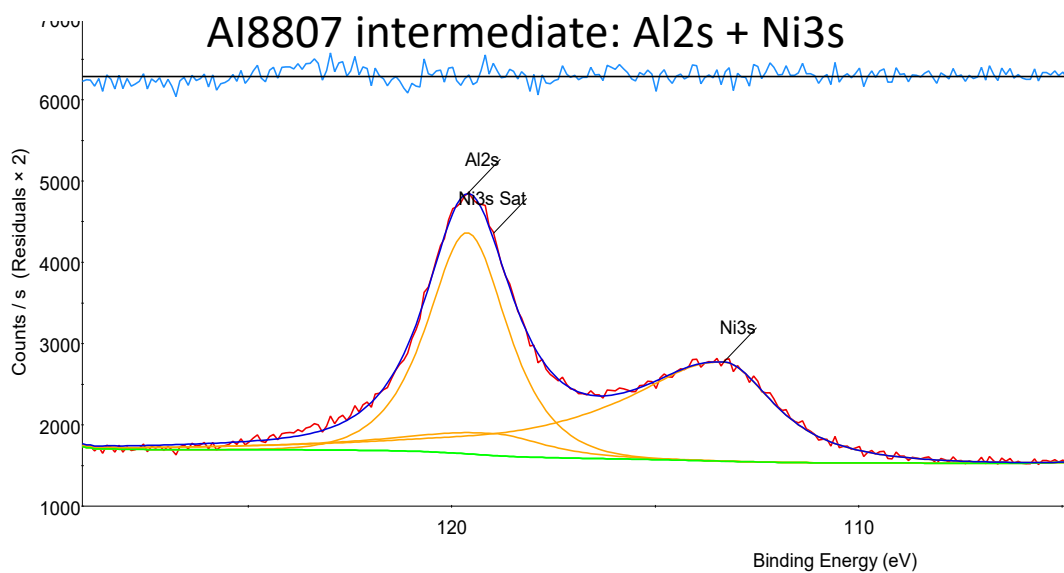
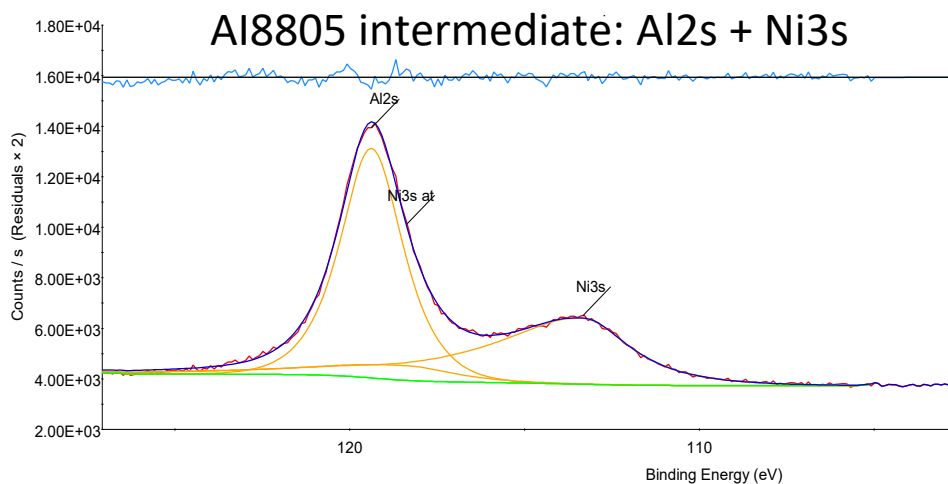
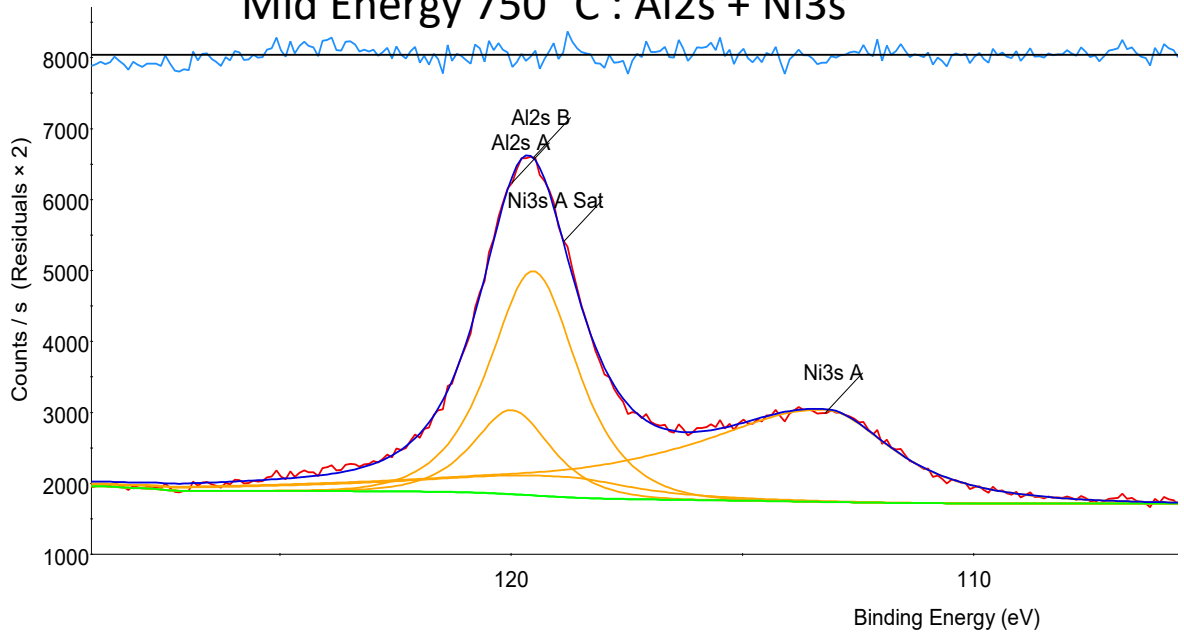


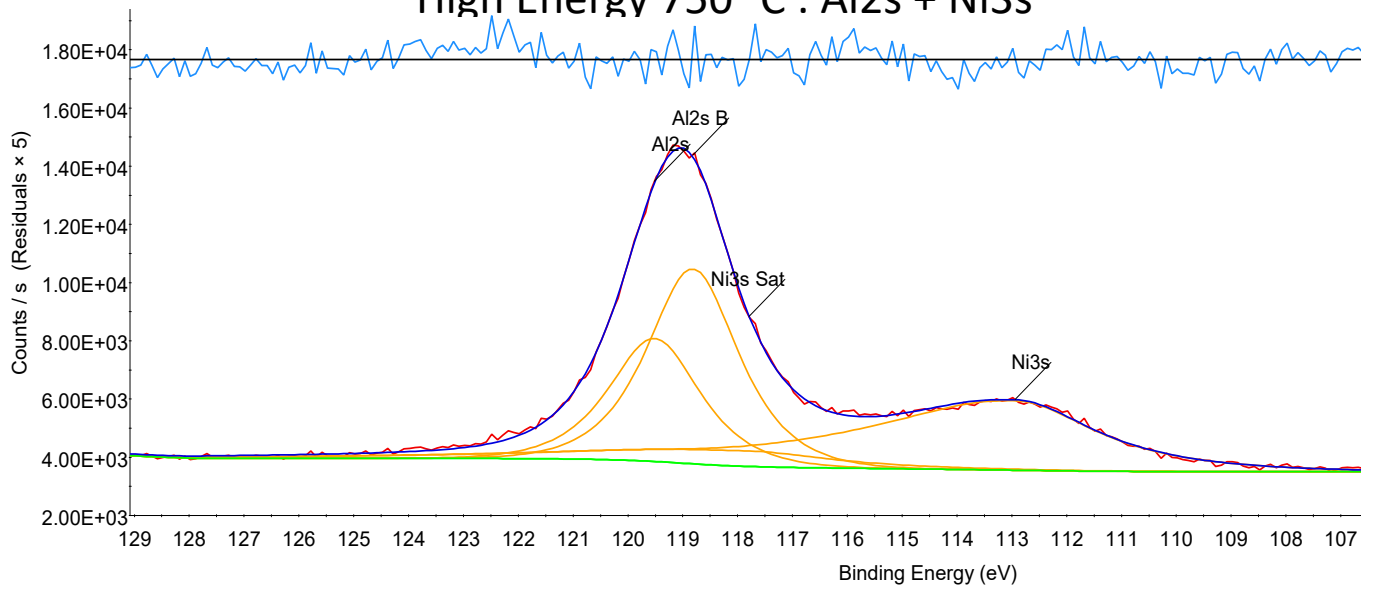
Supplementary information:



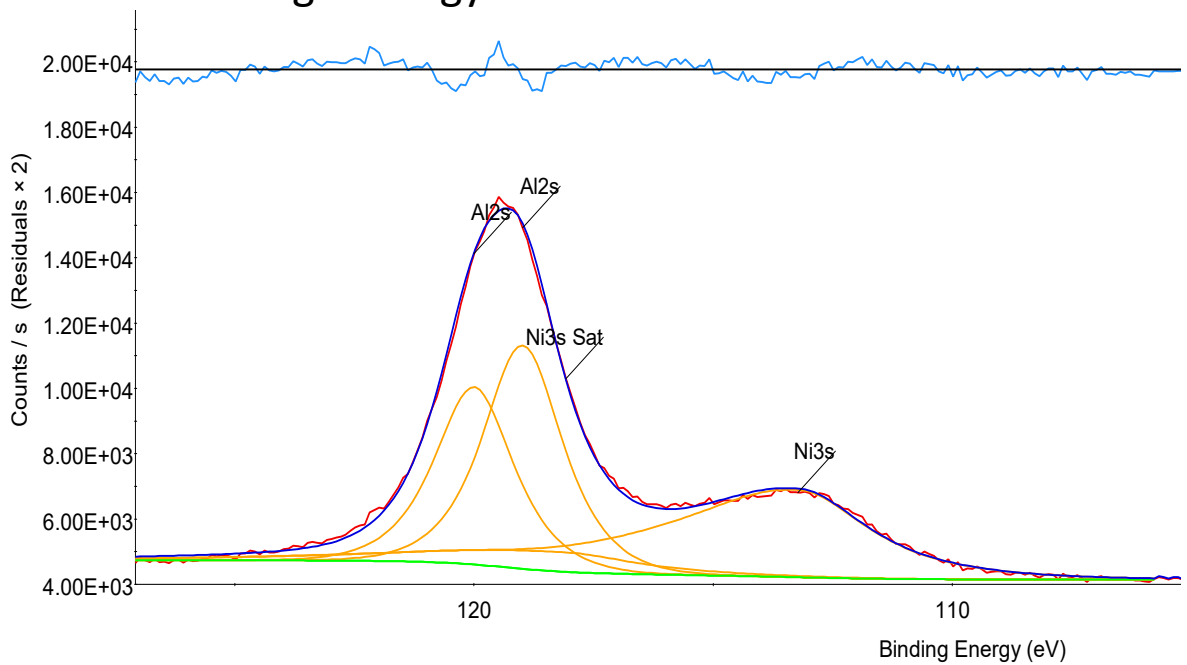
Mid Energy 750 °C : Al2s + Ni3s



High Energy 750 °C : Al2s + Ni3s



High Energy 900 °C : Al2s + Ni3s



Ni:Al ratios

		Intermediate Ni:Al	Calcined Ni:Al
Ground Baseline	na	0.5	
Co-precipitated	800 °C		0.2
Mid energy	750 °C	1.7	1.1
High energy	750 °C	1.2	0.9
	900 °C		0.9

Full Ni2p spectra

