

Figure S1 Standard Calibration Curves for *in-vitro* Assays

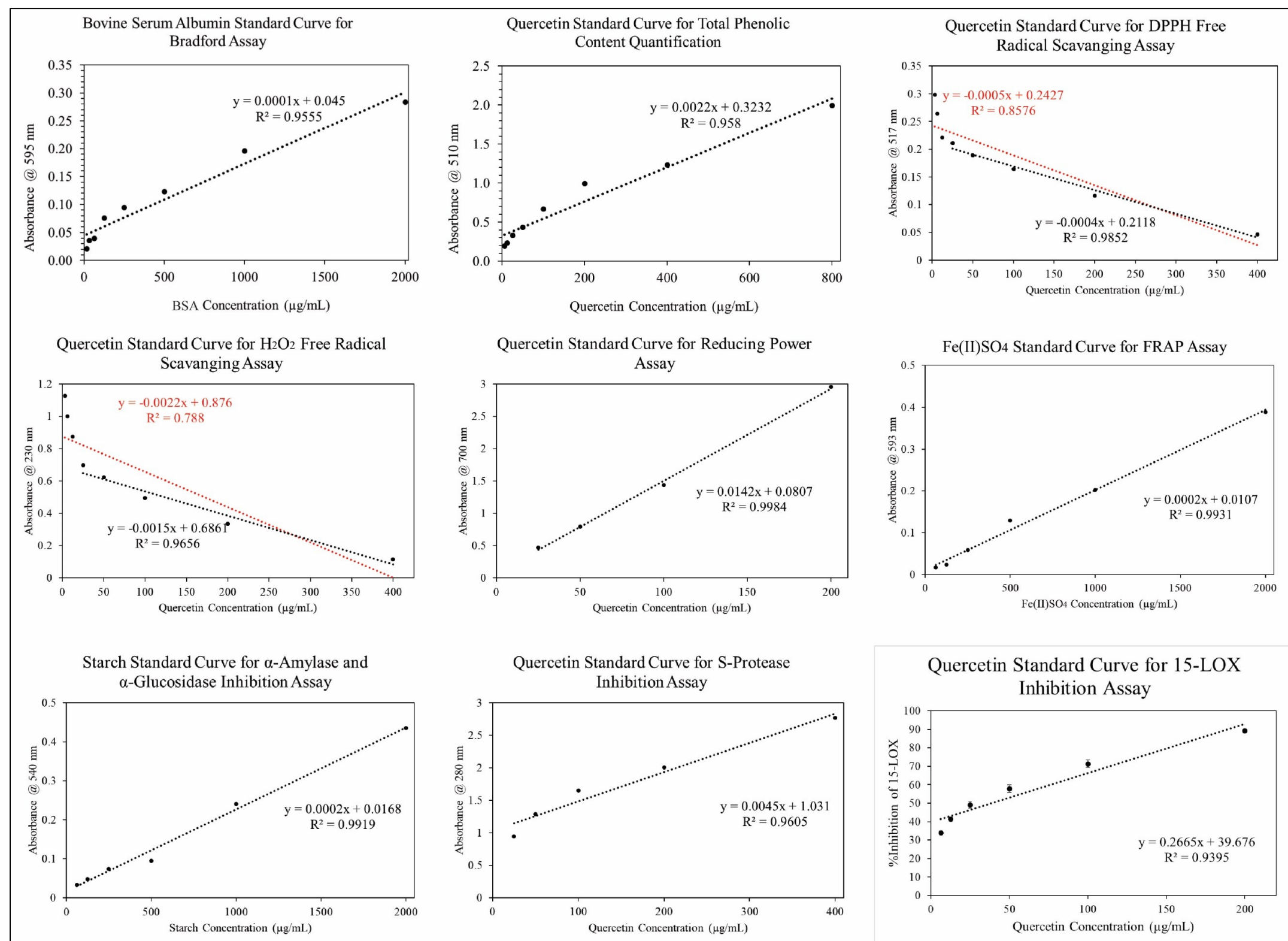
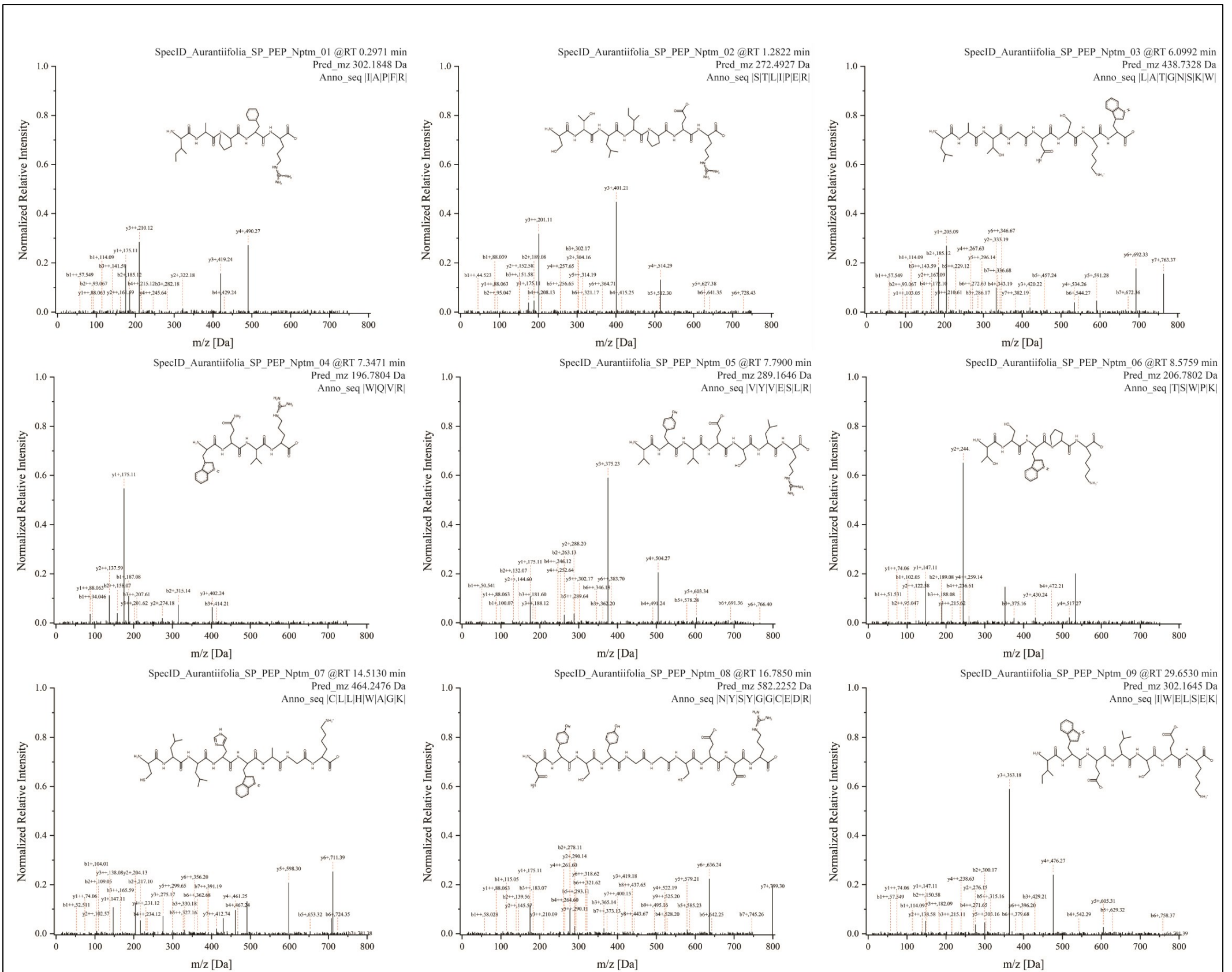


Figure S2A MS Spectra for Identified Peptide Sequences from BARI Lebu-2 Peel dPRE



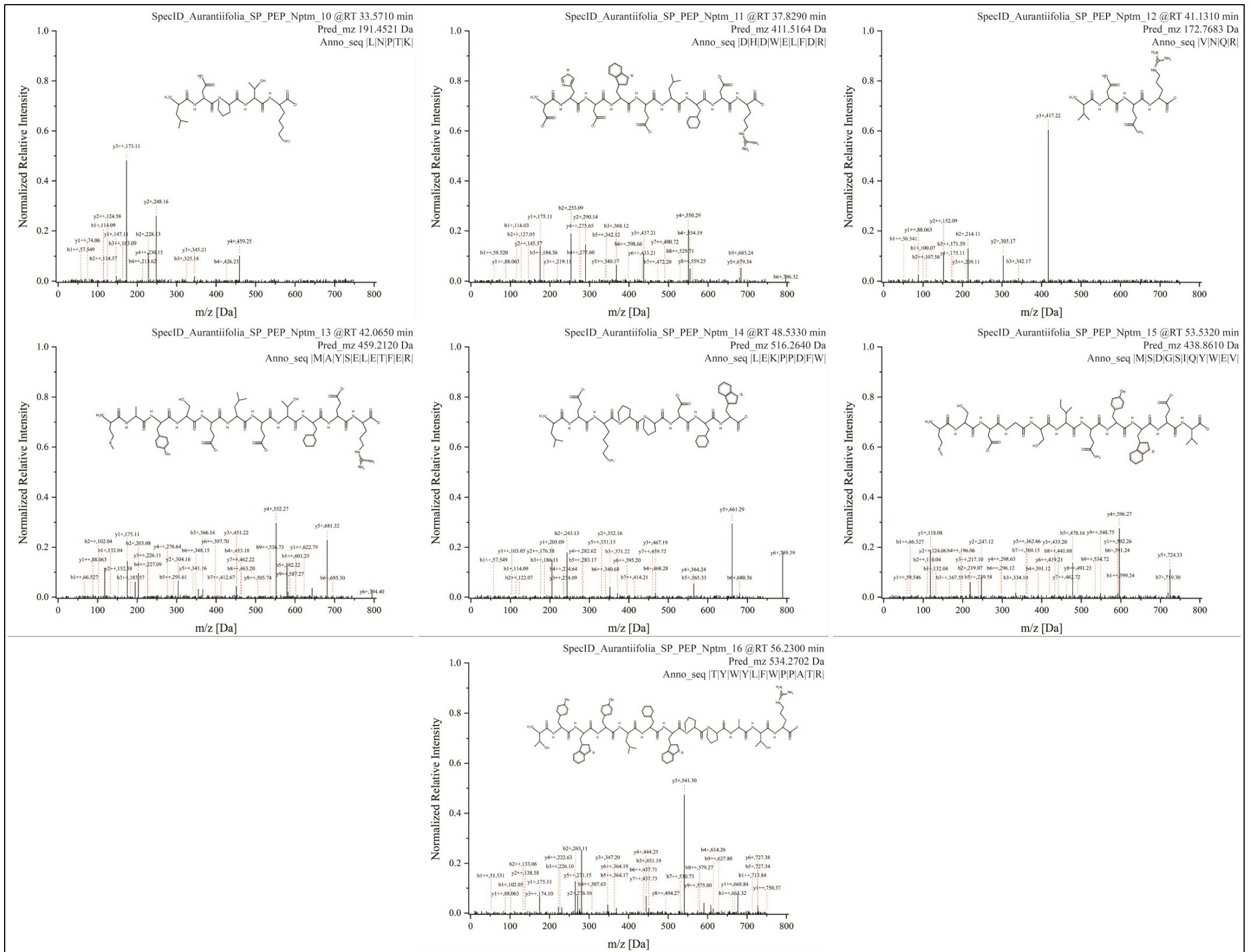
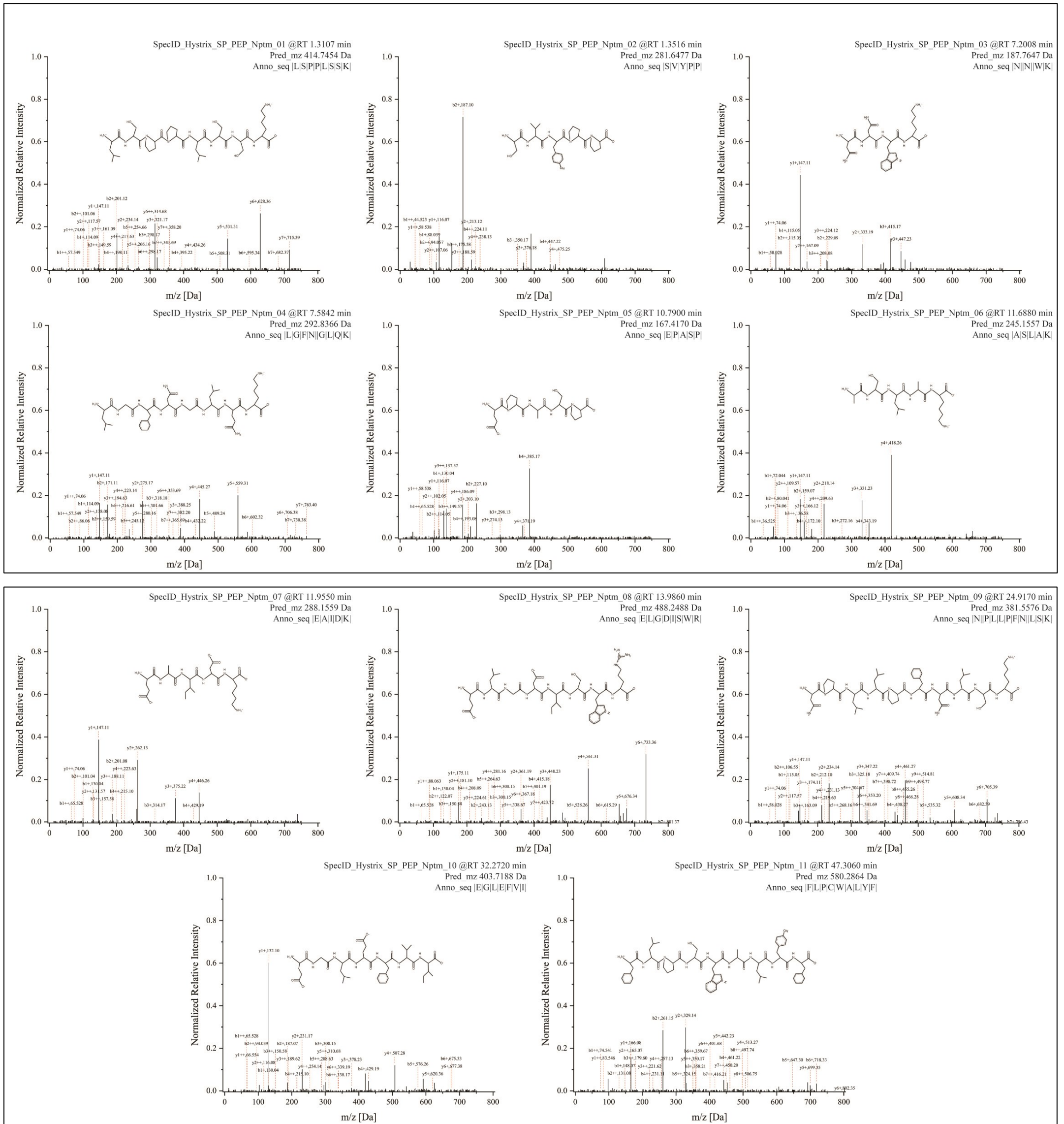
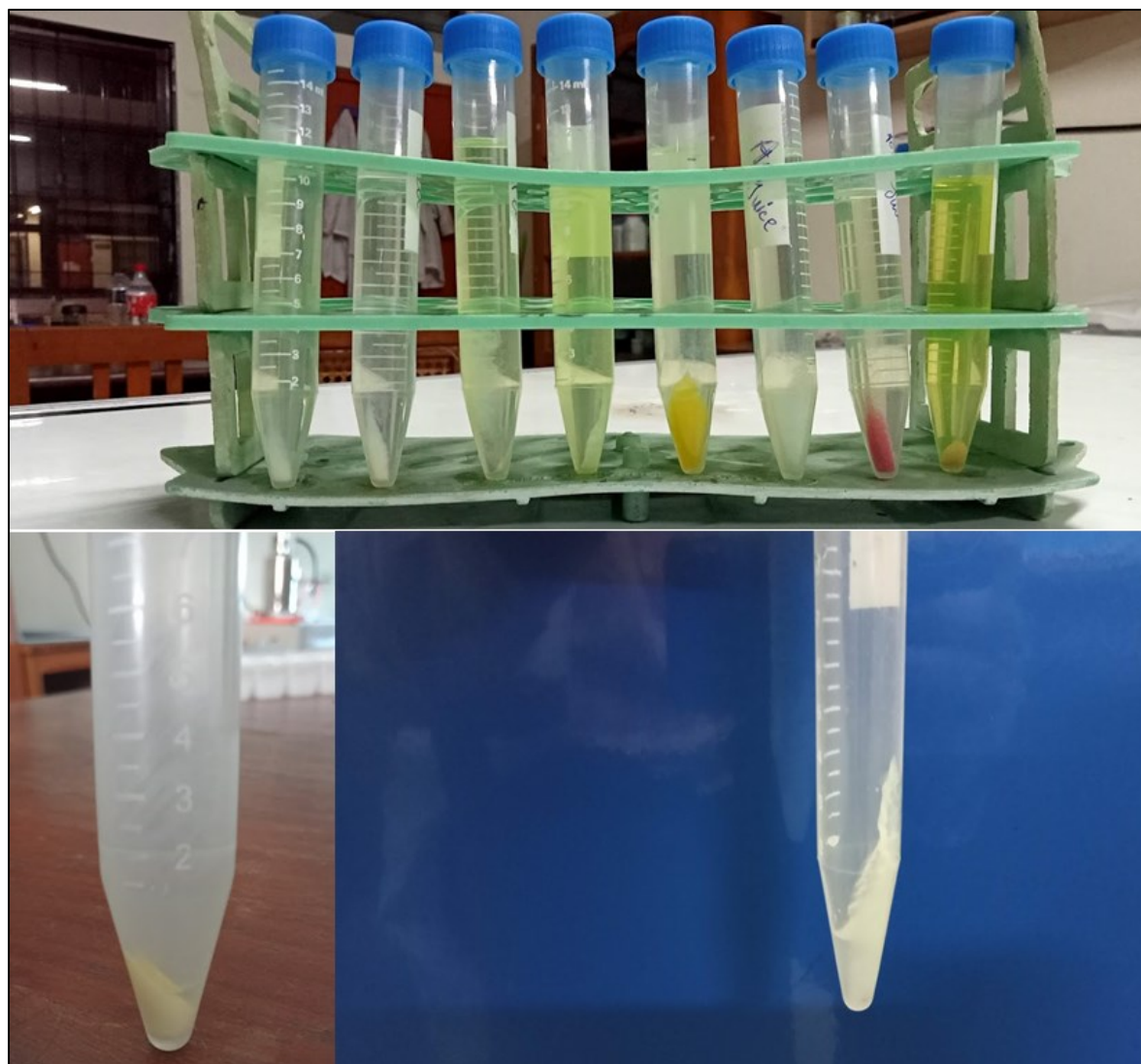




Figure S2B MS Spectra for Identified Peptide Sequences from Gandharaj Pulp dPRE



**Figure S3 Inconsistent co-precipitation of pigmented/complexated contaminants after initial precipitation steps and subsequent removal in later steps**



**Figure S4 Bulk extraction and lyophilization of peptide product for storage and LC-MS Analysis**

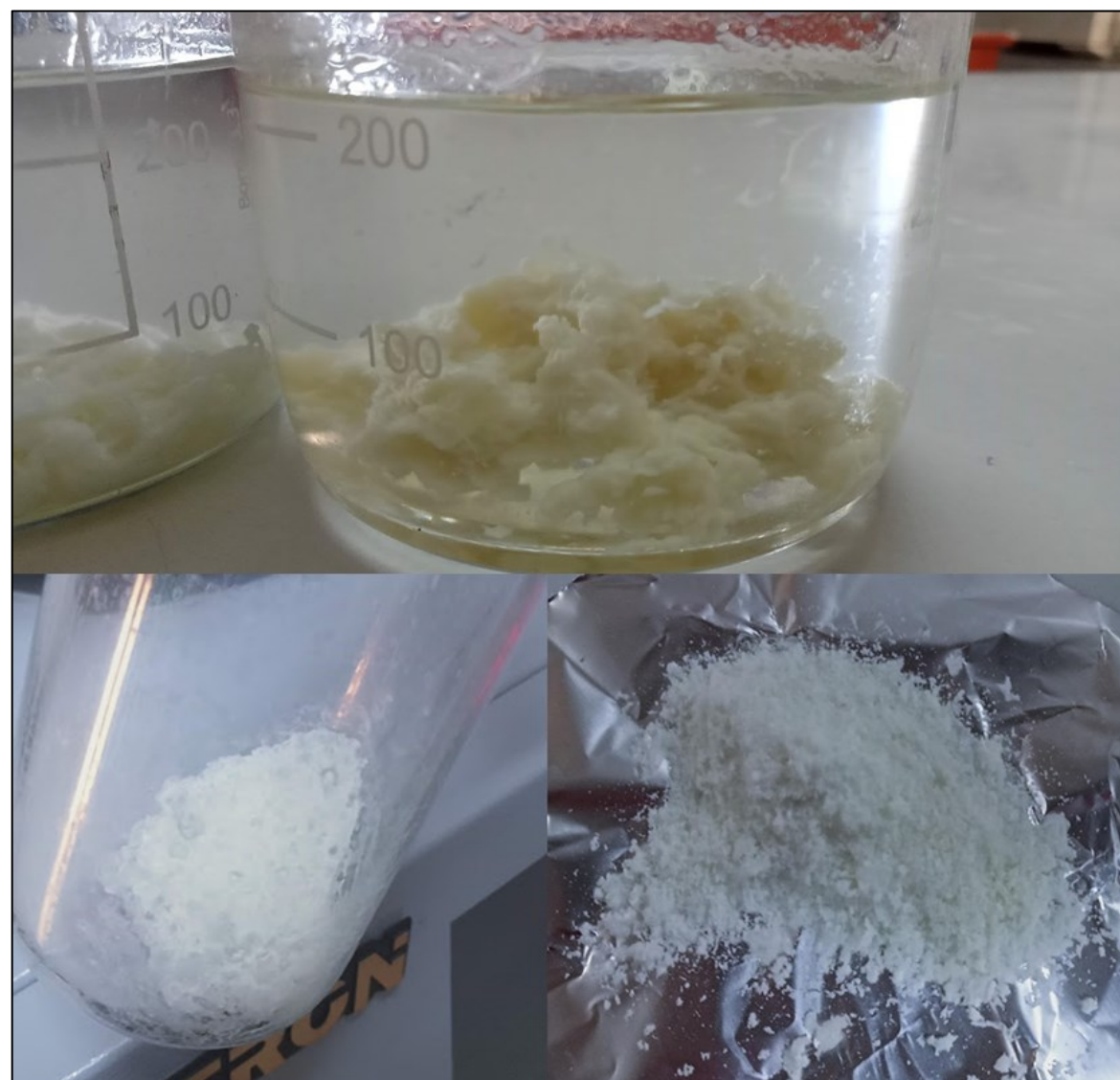




Figure S5 Summarized Methodology Outline of Study.

