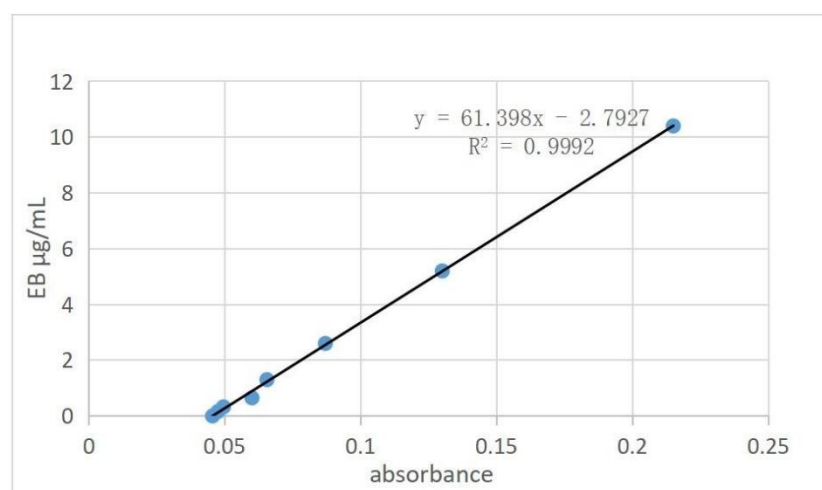


Supplementary Material 1

A

OD1	OD2	OD	EB ($\mu\text{g/ml}$)
0.216	0.214	0.215	10.4
0.130	0.130	0.13	5.2
0.088	0.086	0.087	2.6
0.066	0.065	0.0655	1.3
0.058	0.062	0.06	0.65
0.05	0.049	0.0495	0.325
0.047	0.048	0.0475	0.1625
0.045	0.046	0.0455	0

B

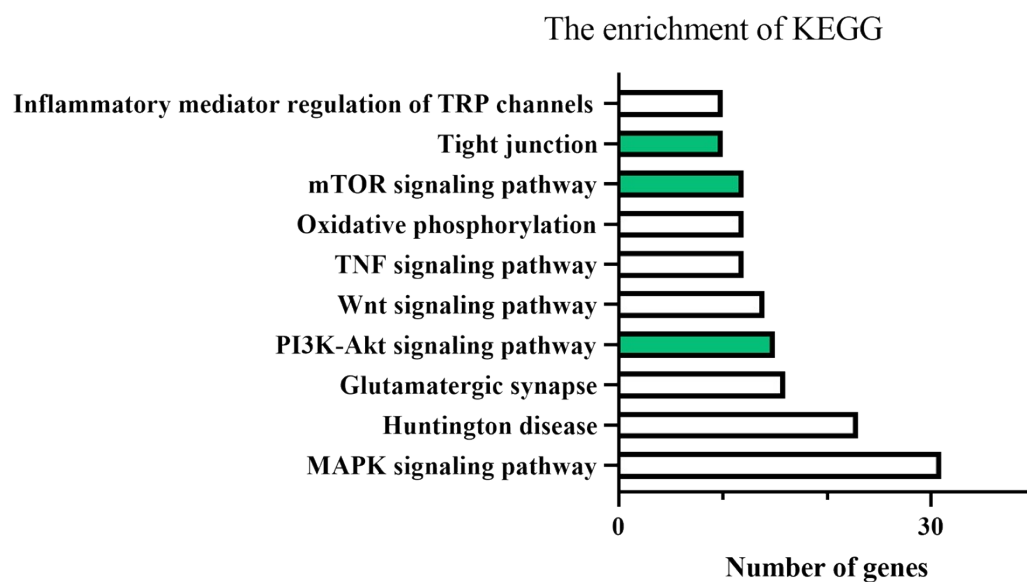


Supplementary Material 1

A.Determination results of standard curve of Evans blue

B.standard curve of Evans blue, $R^2=0.992$

Supplementary Material 2-RNA-seq and KEGG analysis

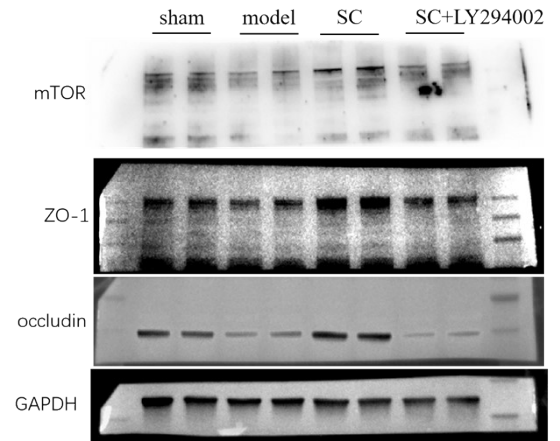
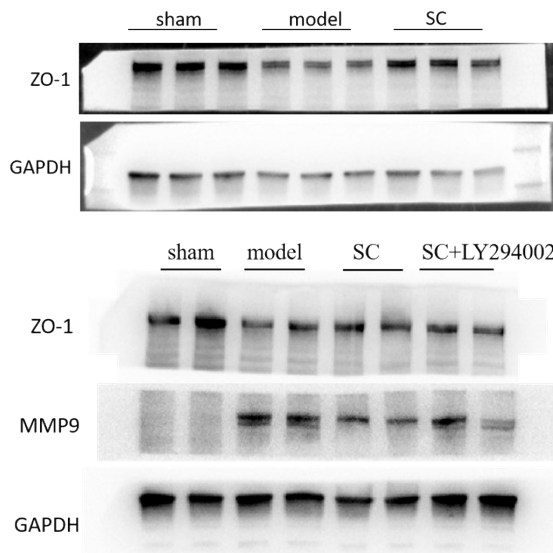


Supplementary Material 3-antibody information

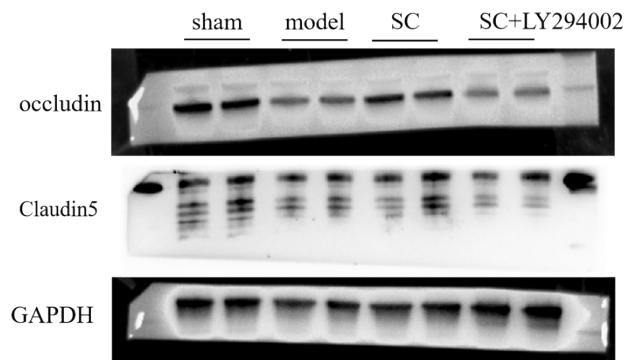
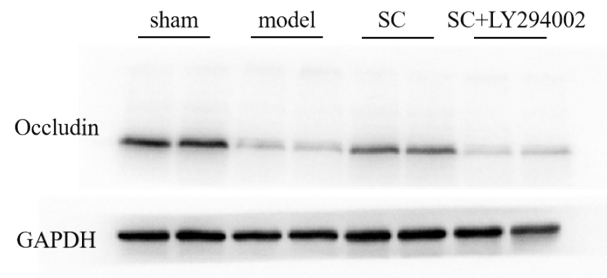
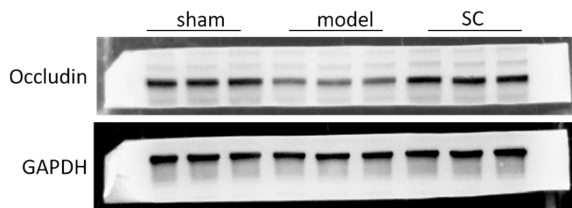
Antibodies	Source species	Identifier	dilution	Company
AKT	Mouse	10176-2-AP	1:1500	PROTEINTECH GROUP (Rosemont, IL , USA)
PI3K P85	Mouse	60225-1-Ig	1:1500	PROTEINTECH GROUP (Rosemont, IL , USA)
P-AKT	Rabbit	66444-1-Ig	1:1500	PROTEINTECH GROUP (Rosemont, IL , USA)
mTOR	Mouse	66888-1-Ig	1:1500	PROTEINTECH GROUP (Rosemont, IL , USA)
ATG5	Mouse	66744-1-Ig	1:1500	PROTEINTECH GROUP (Rosemont, IL , USA)
LC3B	Rabbit	14600-1-AP	1:1500	PROTEINTECH GROUP (Rosemont, IL , USA)
SQSTM1	Rabbit	bs-55207R	1:1500	Bioss ANTIBODIES(China)
MMP9	Rabbit	ab283575	1:3000	abcam (Cambridge, UK)
MMP2	Rabbit	ab92536	1:3000	abcam (Cambridge, UK)
TIMP1	Rabbit	bs-0415R	1:1500	Bioss ANTIBODIES(China)
ZO-1	Rabbit	21773-1-AP	1:1500	PROTEINTECH GROUP (Rosemont, IL , USA)
Occludin	Rabbit	27260-1-AP	1:1500	PROTEINTECH GROUP (Rosemont, IL , USA)
Claudin-5	Rabbit	AF5216	1:2000	Affinity Biosciences(China)
GAPDH	Rabbit	ab9485	1:5000	abcam (Cambridge, UK)

Supplementary Material 4

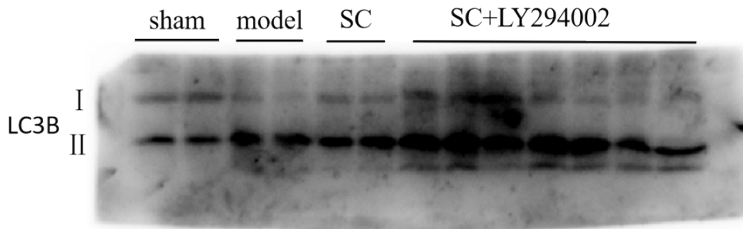
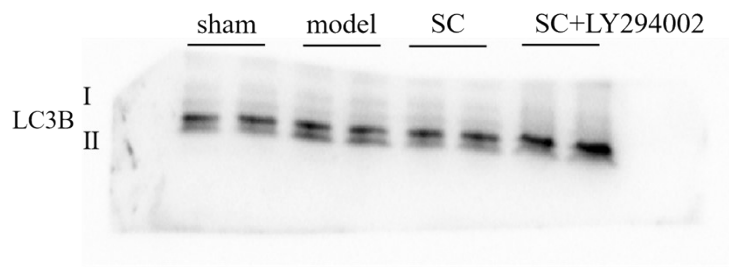
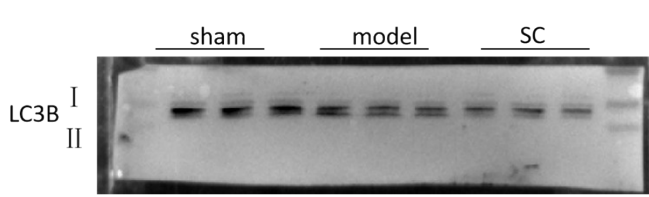
ZO-1、MMP9



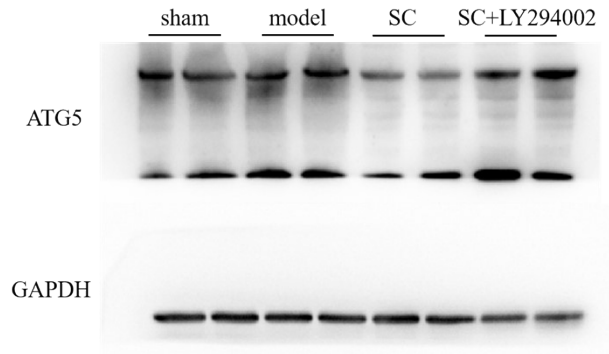
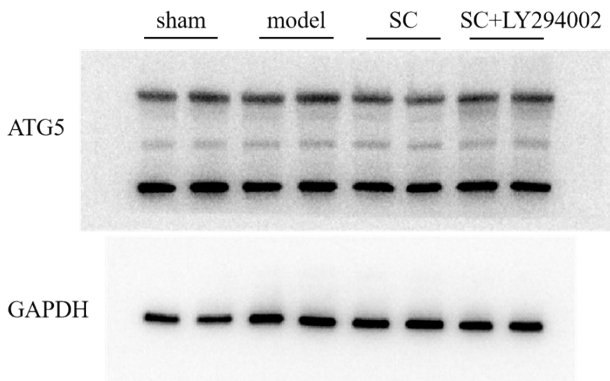
Occludin、Claudin-5



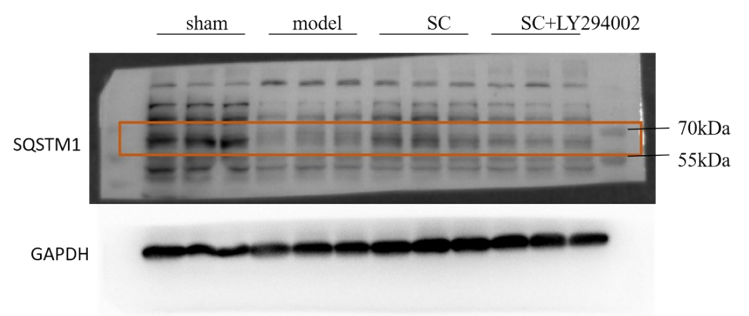
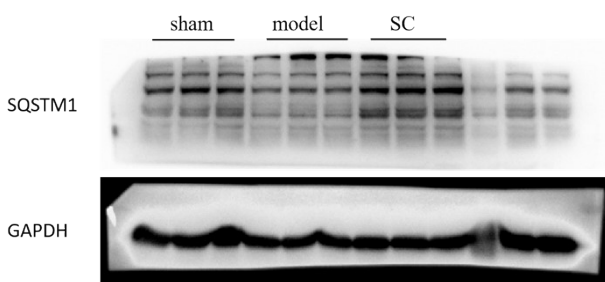
LC3B



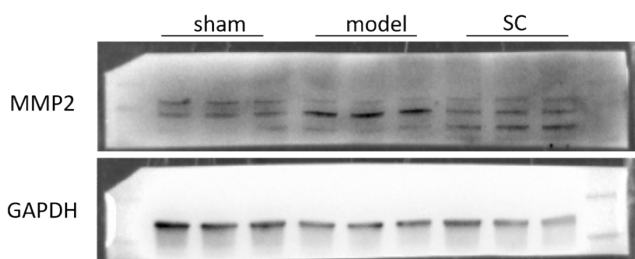
ATG5



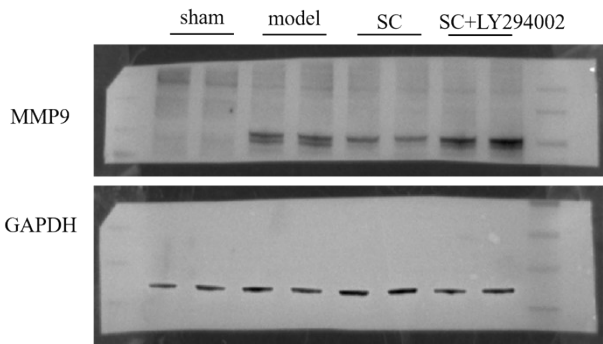
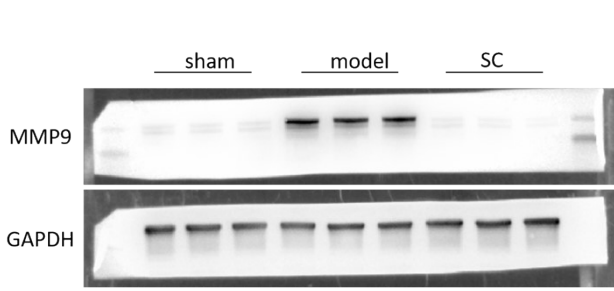
SQSTM1



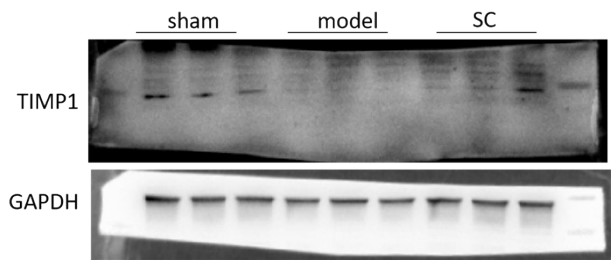
MMP2



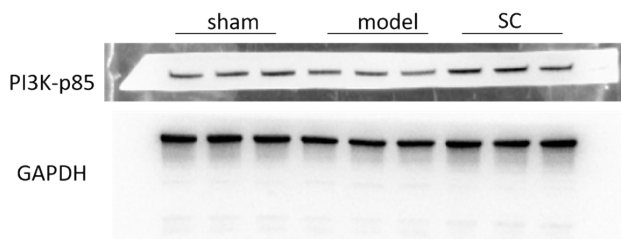
MMP9



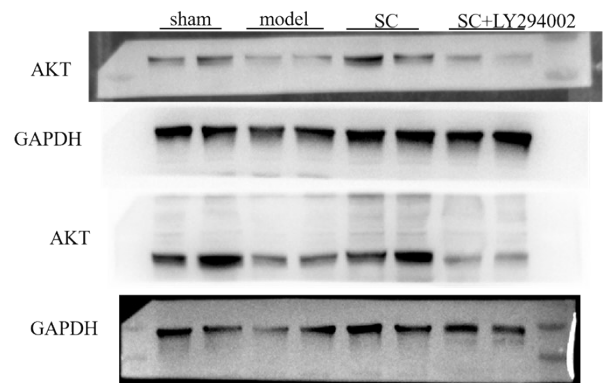
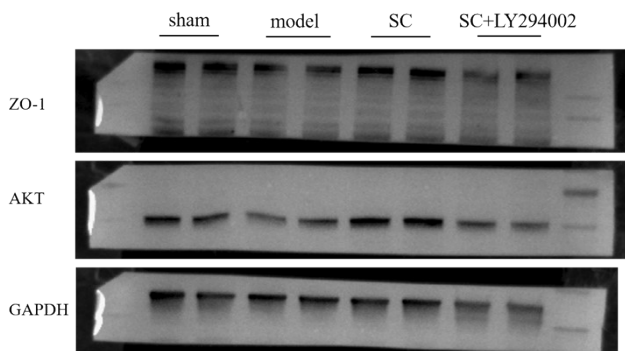
TIMP1



PI3K-p85



AKT



P-AKT

