

### Supporting Information

Sodium houttuynfonate derived from the edible herb *Houttuynia cordata* Thunb improves intestinal malfunctions via maintaining gut microflora stability in *Candida albicans* disordered ulcerative colitis

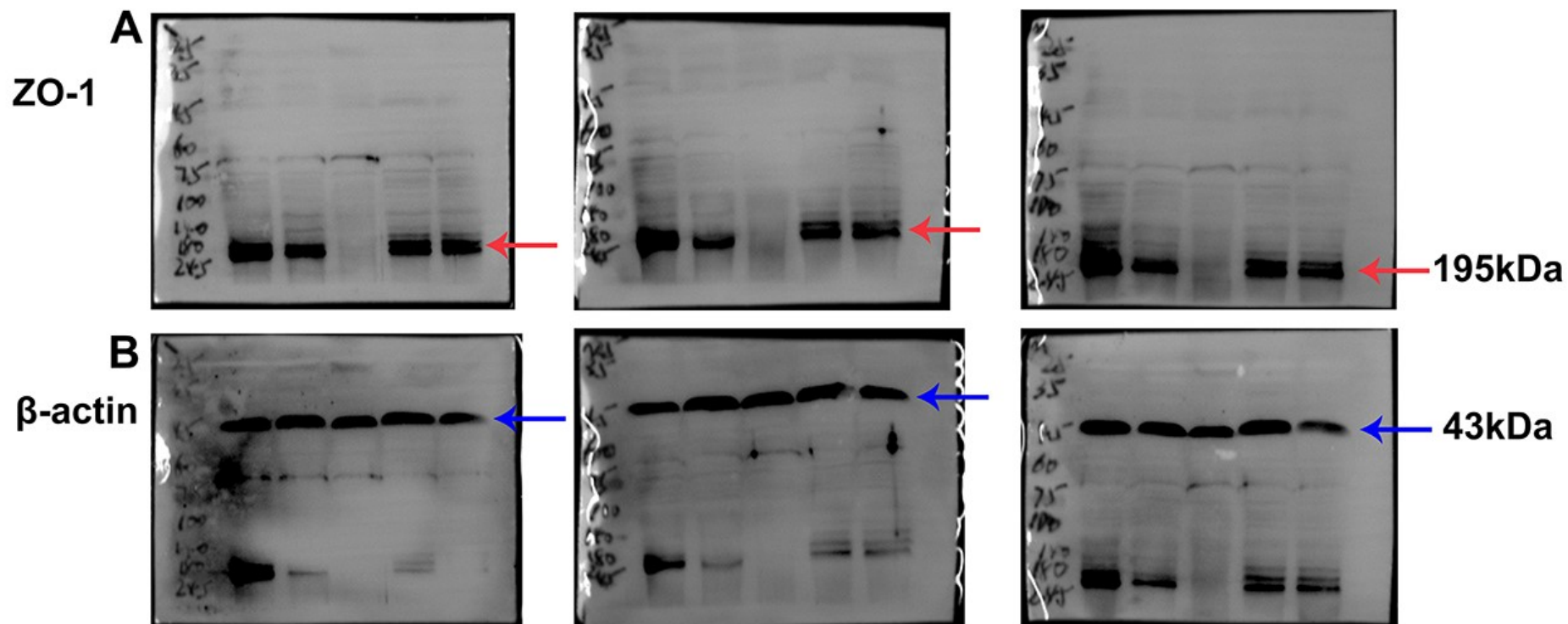
Ting Cheng<sup>a,#</sup>, Chen Xu<sup>a,#</sup>, Daqiang Wu<sup>a,b</sup>, Guiming Yan<sup>a</sup>, Changzhong Wang<sup>a,b</sup>, Tianming Wang<sup>a</sup>,  
Jing Shao<sup>a,b,\*</sup>

<sup>a</sup>Laboratory of Anti-infection and Immunity, College of Integrated Chinese and Western Medicine (College of Life Science), Anhui University of Chinese Medicine, Zhijing Building, 350 Longzihu Road, Xinzhan District, Hefei 230012, Anhui, P. R. China

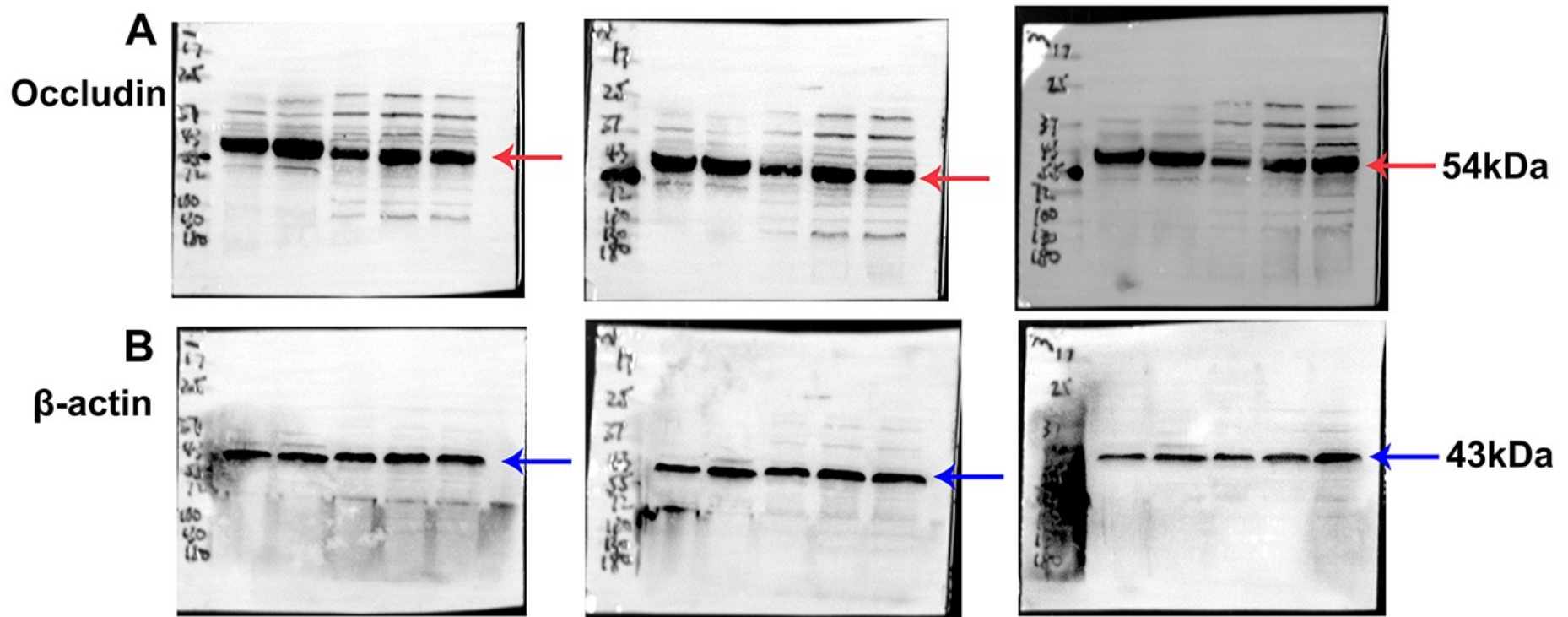
<sup>b</sup>Institute of Integrated Traditional Chinese and Western Medicine, Anhui Academy of Chinese Medicine, Zhijing Building, 350 Longzihu Road, Xinzhan District, Hefei 230012, Anhui, P. R. China

<sup>#</sup>The authors contribute equally to this paper.

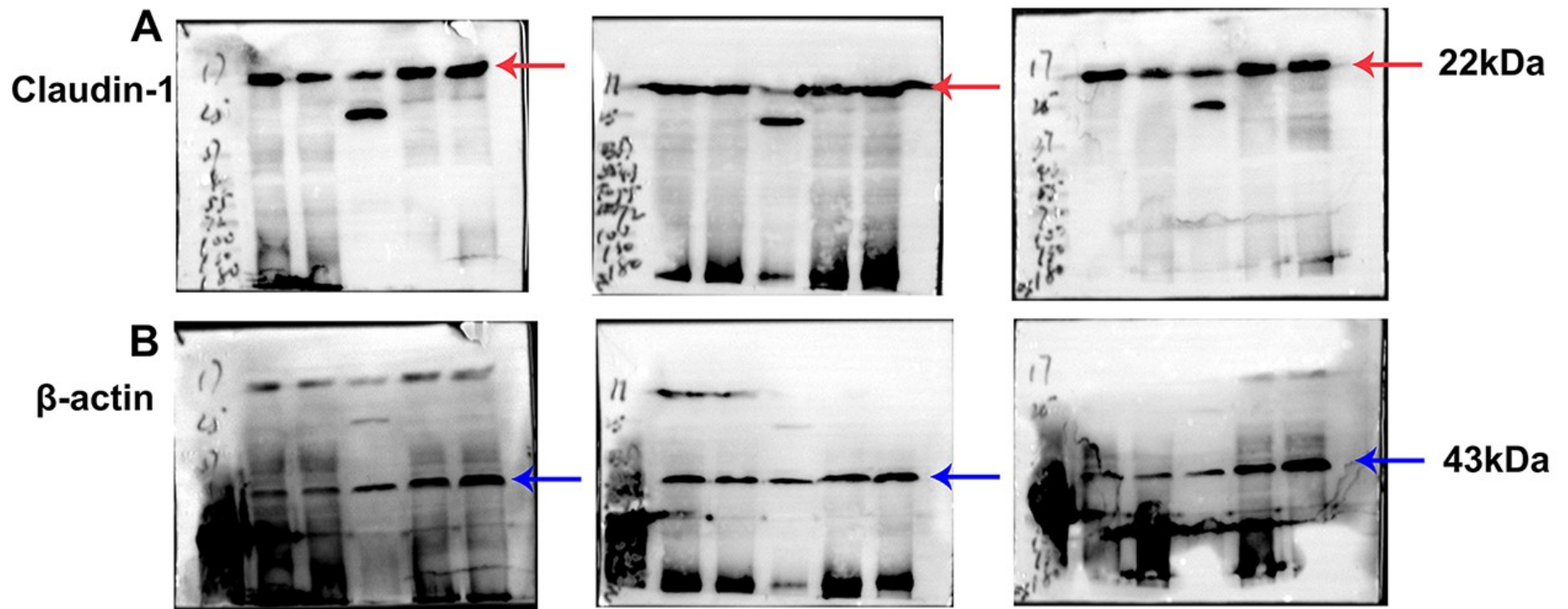
\*Corresponding authors: Dr. Jing Shao, E-mail: [ustcnjnusjtu@126.com](mailto:ustcnjnusjtu@126.com); Tel/Fax: +86-551-6812-9457.



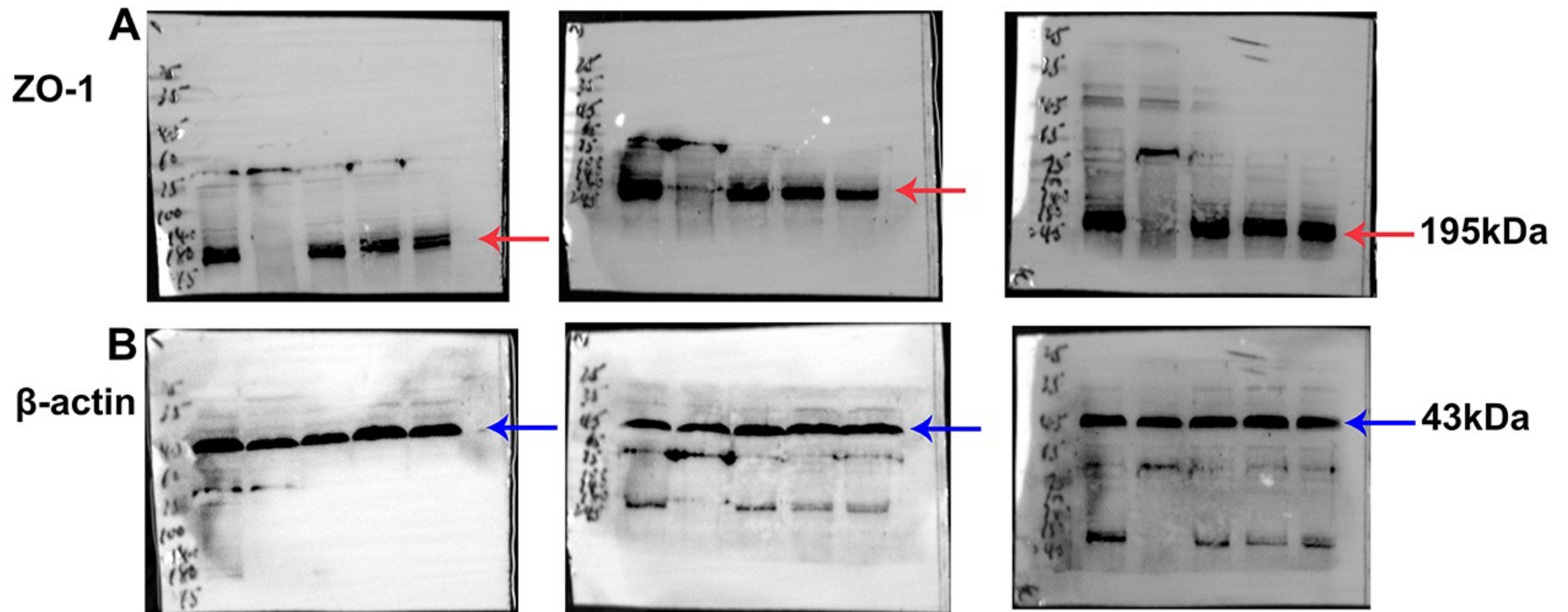
Supplementary Figure 1. Three uncropped blot versions of (A) ZO-1 protein (red arrows) and (B)  $\beta$ -actin protein (blue arrows) in non-cohousing experiment (n=3).



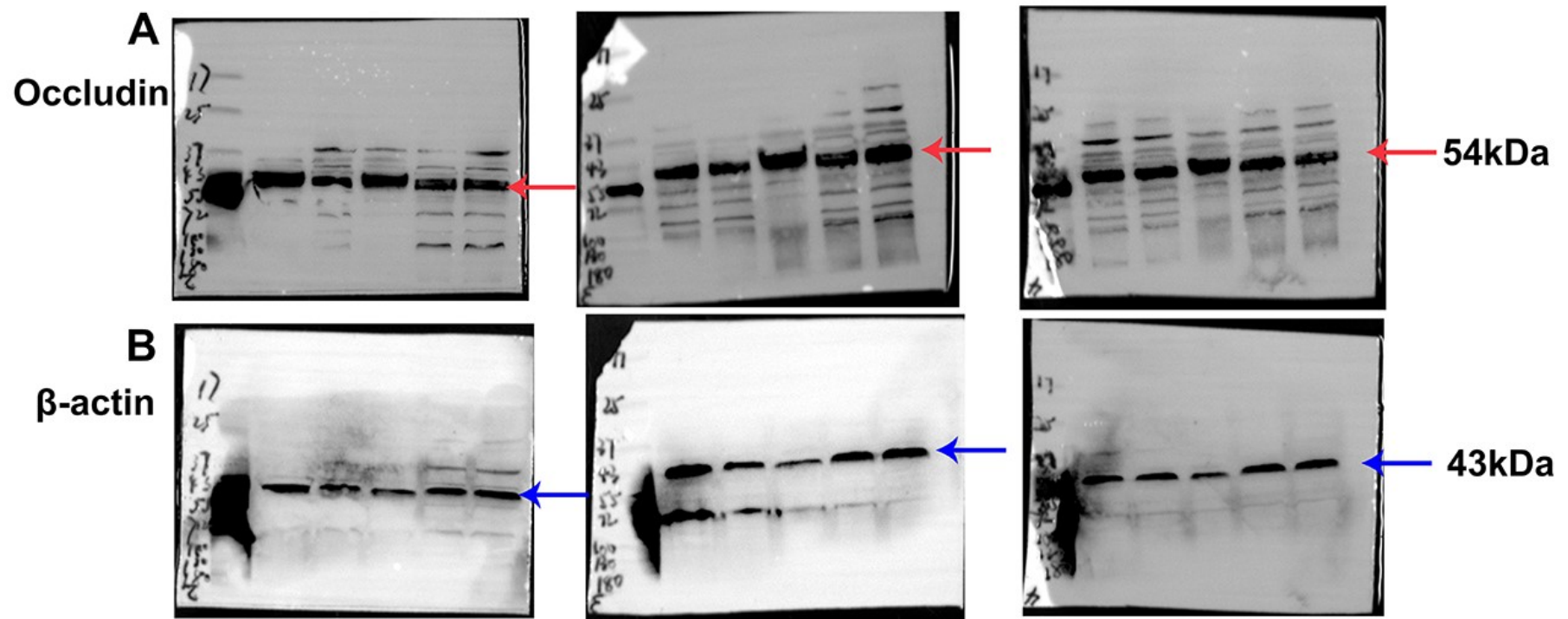
**Supplementary Figure 2.** Three uncropped blot versions of (A) Occludin protein (red arrows) and (B)  $\beta$ -actin protein (blue arrows) in non-cohousing experiment (n=3).



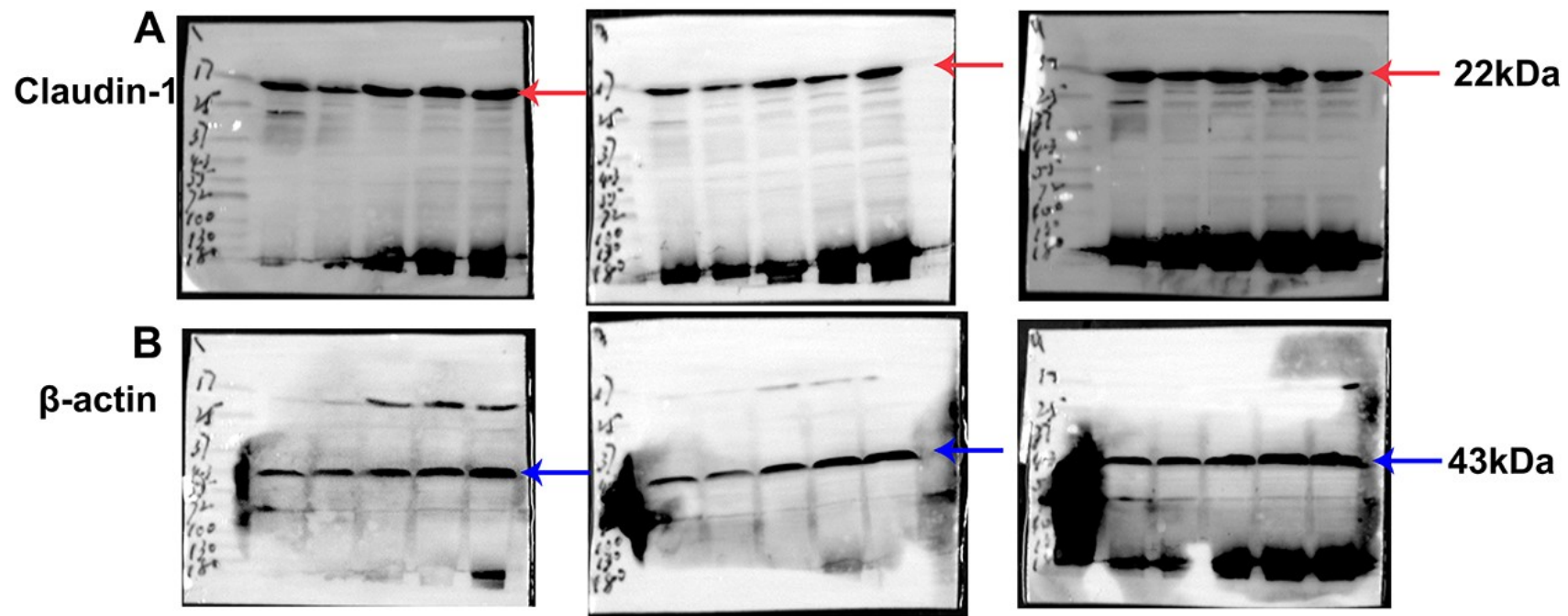
**Supplementary Figure 3.** Three uncropped blot versions of (A) Claudin-1 protein (red arrows) and (B)  $\beta$ -actin protein (blue arrows) in non-cohousing experiment (n=3).



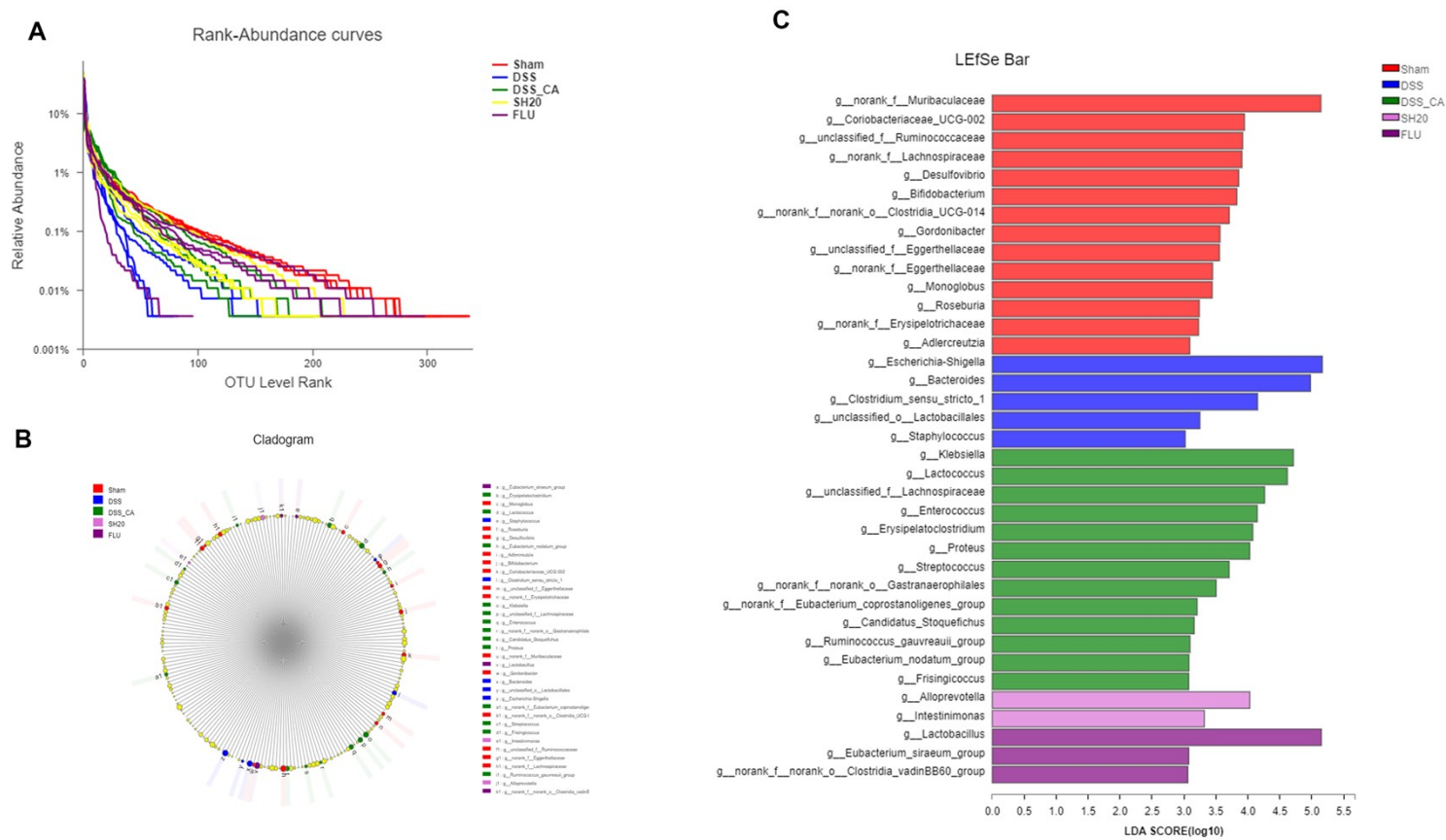
**Supplementary Figure 4.** Three uncropped blot versions of (A) ZO-1 protein (red arrows) and (B)  $\beta$ -actin protein (blue arrows) in cohousing experiment (n=3).



Supplementary Figure 5. Three uncropped blot versions of (A) Occludin protein (red arrows) and (B)  $\beta$ -actin protein (blue arrows) in cohousing experiment (n=3).

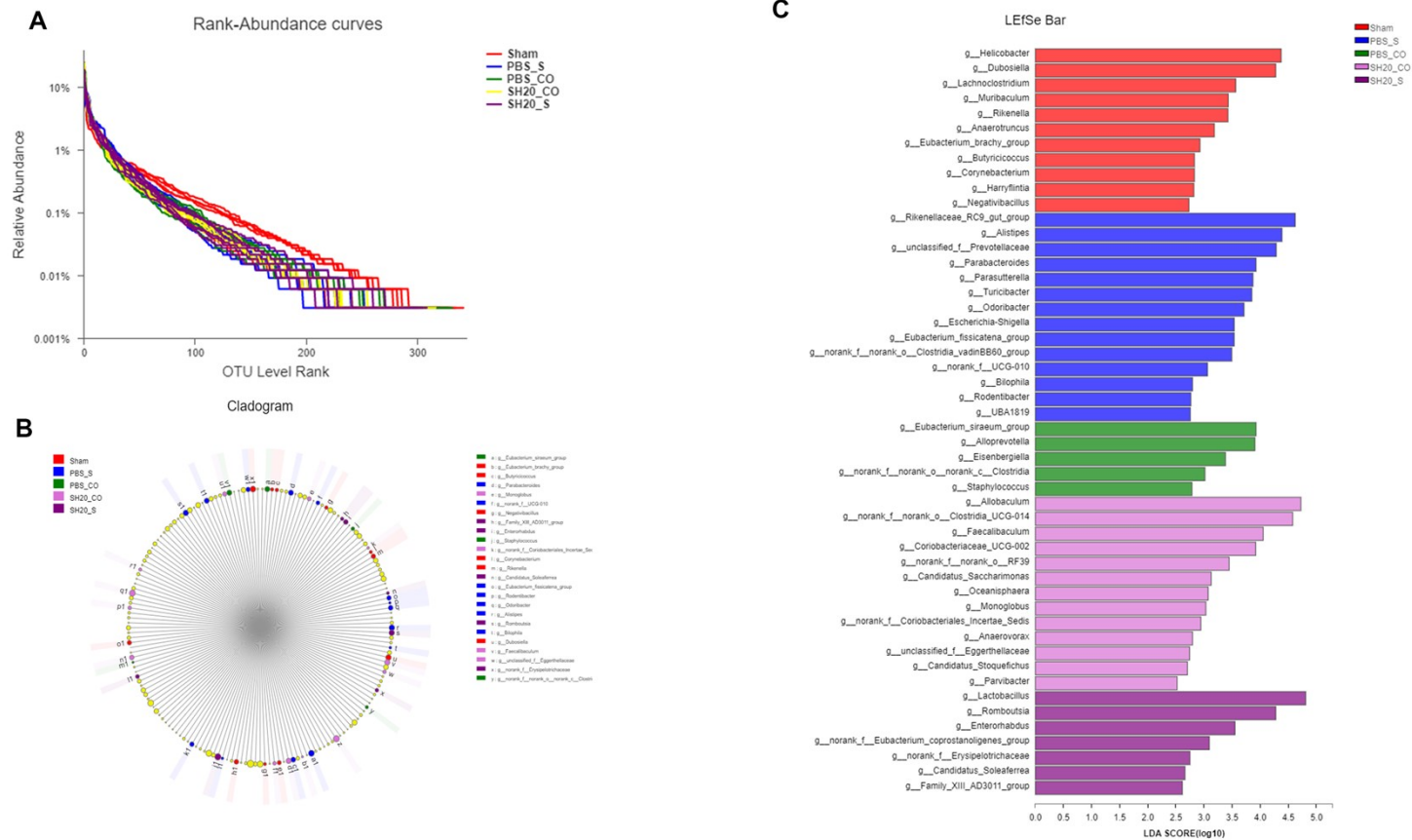


**Supplementary Figure 6.** Three uncropped blot versions of (A) Claudin-1 protein (red arrows) and (B)  $\beta$ -actin protein (blue arrows) in cohousing experiment (n=3).



**Supplementary Figure 7.** Effects of SH on gut microbiota in non-cohousing experimental mice through (A) rank-abundance curves which visually reflect the richness and evenness of species in the sample (n=4), (B) cladogram (n=5) and (C) LefSe analysis with taxa meeting linear discriminant analysis (LDA) score threshold > 2 shown (n=5).





**Supplementary Figure 8.** Effects of SH on gut microbiota in cohousing experimental mice through (A) rank-abundance curves which visually reflect the richness and evenness of species in the sample (n=4), (B) cladogram (n=5) and (C) LEfSe analysis with taxa meeting linear discriminant analysis (LDA) score threshold > 2 shown (n=5).