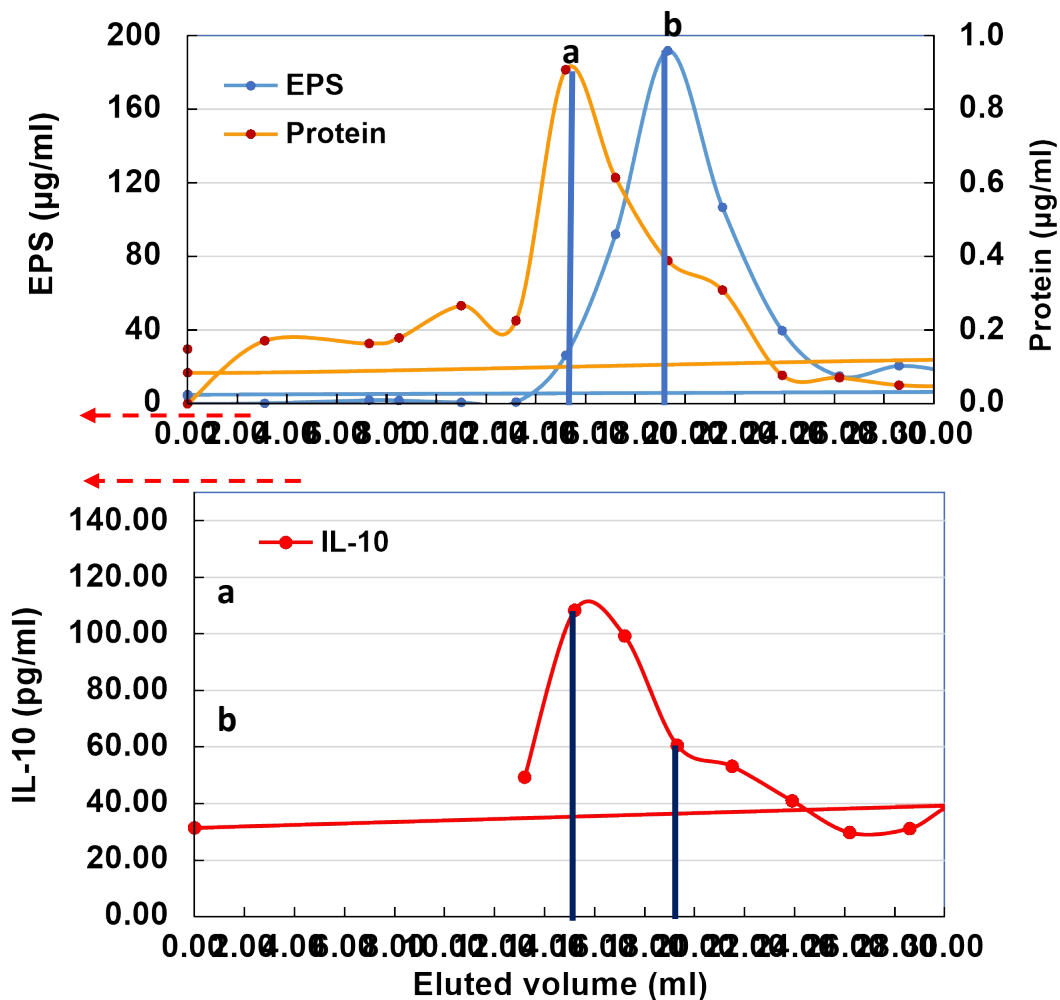


a=highest in protein

b=highest in EPS



(Total activity at a) = (Activity by Protein at a) + (Activity by EPS at a)

Total activity at a (IL-10) = 110 pg/ml
 = (Activity by Protein)a + (Activity by EPS) b
 = 0.9 (µg/ml) x A + 20 (µg/ml) x B ----- (A)

A= coefficient; activity by protein per concentration (pg/ml)/(µg/ml)

B= Coefficient; activity by EPS per concentration (pg/ml)/(ug/ml)

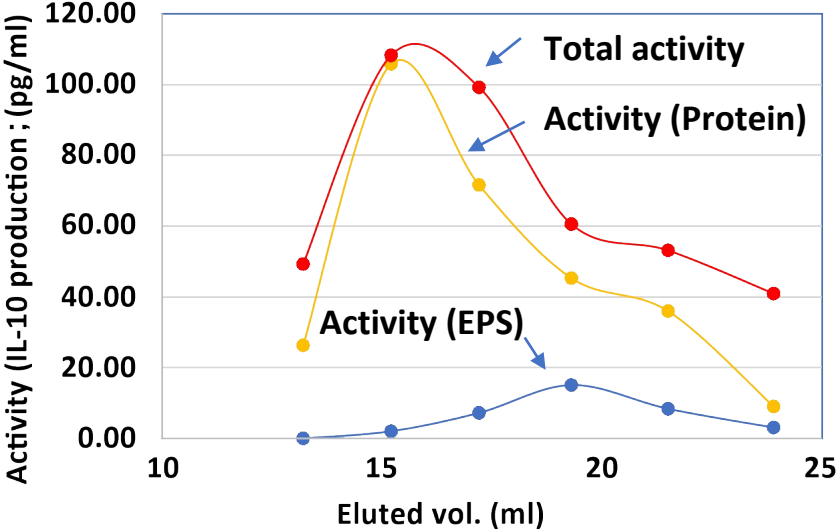
(Total activity at b) = (Activity by Protein at b) + (Activity by EPS at b)

Total activity(IL-10) = 60 pg/ml
 = (Activity by Protein)a + (Activity by EPS) b
 = 0.4 (µg/ml) x A + 180 (µg/ml) x B ----- (B)

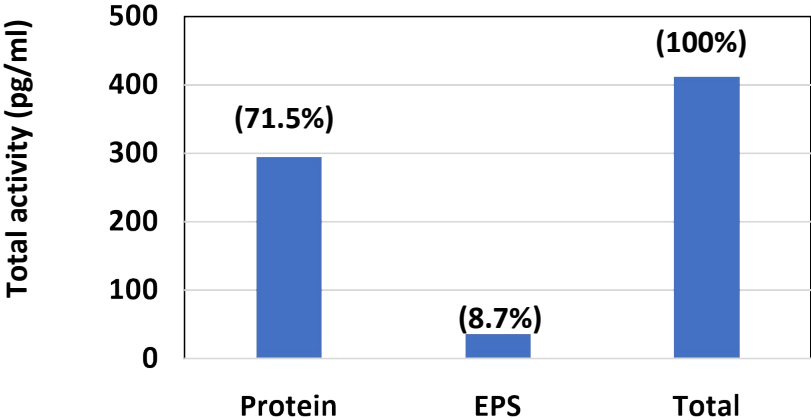
From (A) and (B)
 A is 120.1 pg/ml/ µg protein/ml
 B is 0.065 pg/ml/ µg EPS/ml

From (A) and (B)
 Coefficient A is 120.1 (pg/ml)/ (μg protein/ml)
 Coefficient B is 0.065 (pg/ml)/ (μg EPS/ml)

From coefficients A and B Activity (Protein) and Activity (EPS) estimated are showed in following Fig.



Predicted activities of Protein and EPS



Estimated contribution of total Protein and EPS

Contribution of Protein on IL-10 inducing activity was estimated as 71.5%.

Fig. S4. Estimated contributions of protein and EPS on IL-10 inducing activities of fractions of gel filtration (Bio-gel P-100) and combined activity.