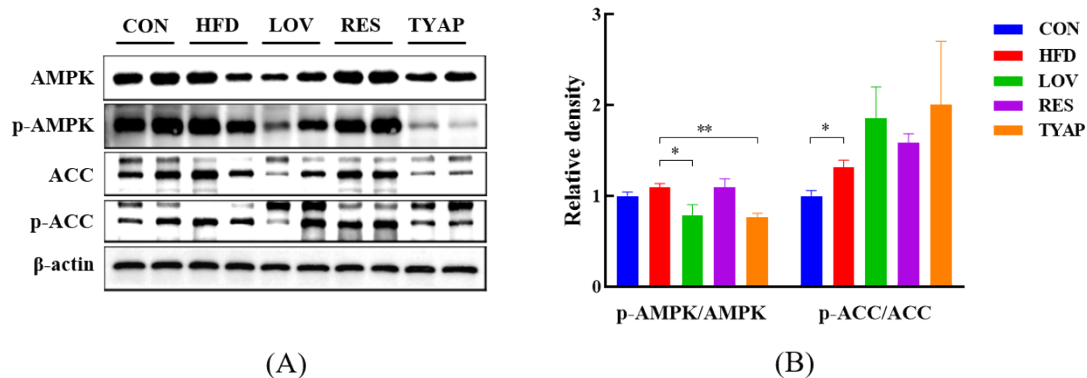


**Figure S1.** Effects of TYAP on food intake of HFD-induced diabetic mice. The values were present as the mean  $\pm$  SD (n = 12).



**Figure S2.** Effects of TYAP on the activation of AMPK/ACC signaling pathway. (A) Western blotting images; (B) Statistical analysis of the protein expression of p-AMPK/AMPK and p-ACC/ACC. The values were present as the mean  $\pm$  SD (n = 6), \* $p$  < 0.05, and \*\* $p$  < 0.01 versus the HFD group.