

Supporting Information

for

**Study on *Lactiplantibacillus plantarum* R6-3 from Sayram
Kettekii to prevents chronic unpredictable mild stress-induced
depression in mice through microbe-gut-brain Axis**

Lina Zhao^{a,§}, *Dongyao Li*^{a,b,§}, *Bimal Chitrakar*^a, *Chen Li*^{a,b}, *Na Zhang*^{a,b,c}, *Shaogang
Zhang*^a, *Xinyu Wang*^a, *Miaoshu Wang*^{b,d}, and *Hongtao Tian*^{a,b,e*}, *Yunbo Luo*^f

^aCollege of Food Science and Technology, Hebei Agricultural University, Baoding, Hebei 071000, China.

^bHebei Technology Innovation Center of Probiotic Functional Dairy Product, Baoding, Hebei 071000, China.

^cSchool of Biochemical and Environmental Engineering, Baoding University, Baoding, Hebei 071000, China.

^dNew Hope Tensun (Hebei) Dairy Co., Ltd, Baoding, Hebei 071000, China.

^eNational Engineering Research Center for Agriculture in Northern Mountainous Areas, Baoding, Hebei 071000, China.

^fCollege of Food Science and Nutritional Engineering, China Agricultural University, Beijing 100083, China.

*Corresponding author. E-mail: tht631022@163.com.

§Lina Zhao and Dongyao Li contributed equally to this paper.

The Supporting Information includes:

Figure S1. The animal test program.

Figure S2. The stimulus program arrangement for establishing CUMS model.

Figure S3. The number of neurons of hippocampal CA1 region.

Figure S4. The representative western blot image.

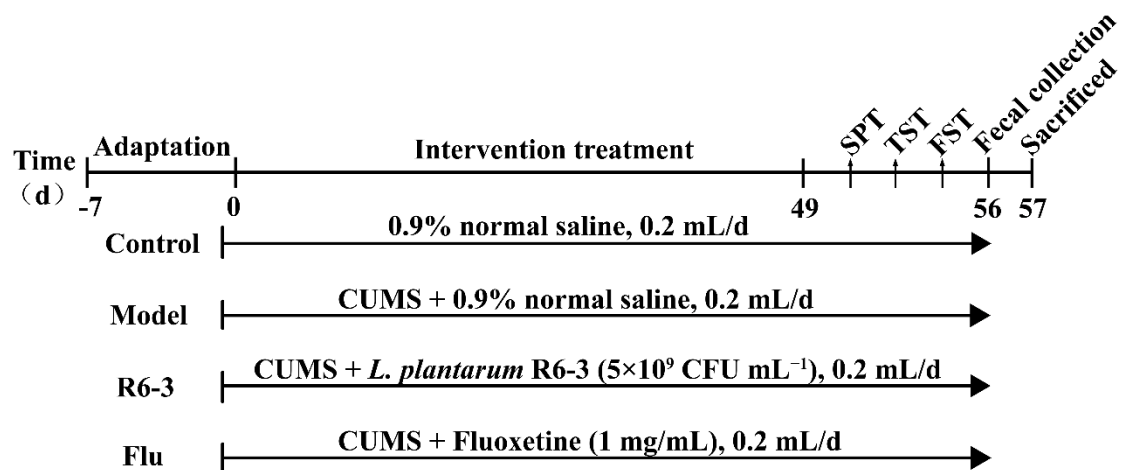


Figure S1. The animal test program. Control-control group, Model-CUMS group, R6-3-*L. plantarum* R6-3 group, and Flu-fluoxetine group, SPT-sucrose preference test, TST-tail suspension test, FST-forced swimming test, CUMS-chronic unpredictable mild stress.

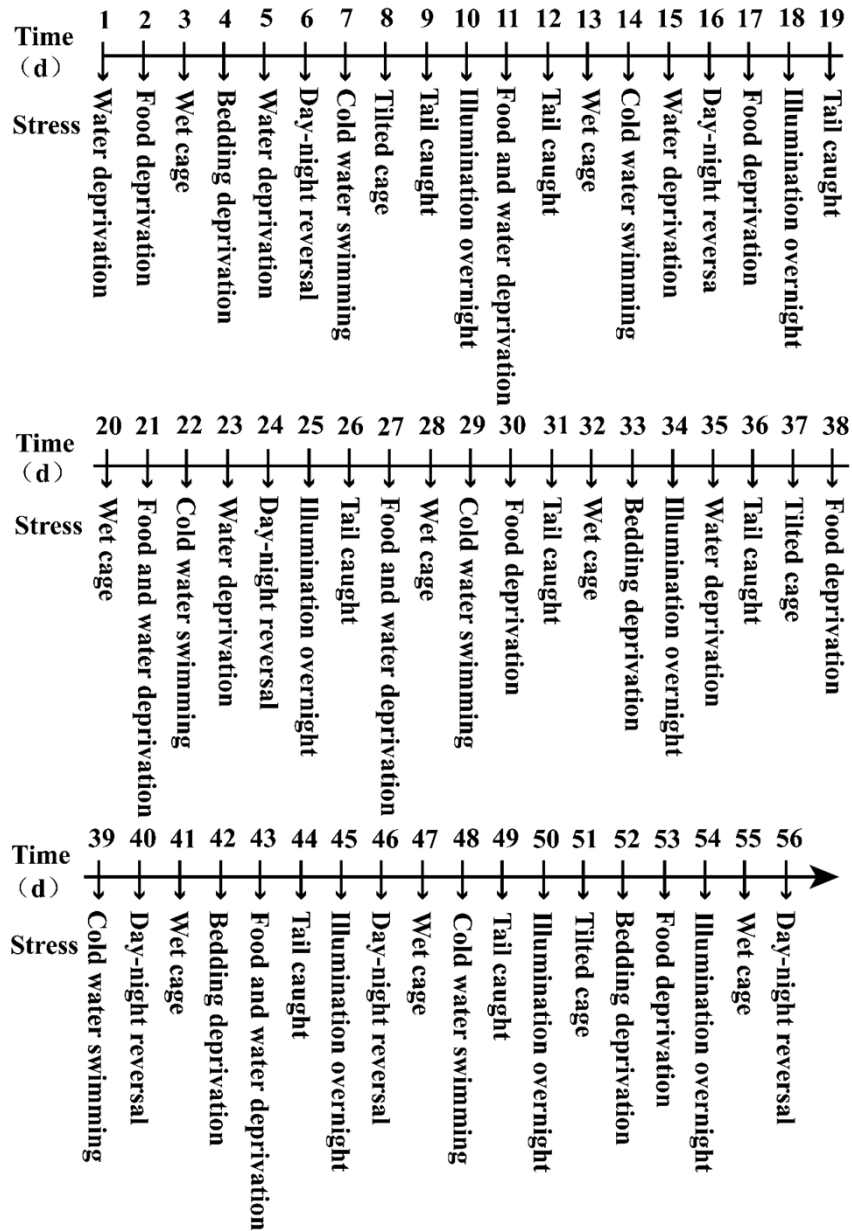


Figure S2. The stimulus program arrangement for establishing CUMS model. Water deprivation-remove the water-bottle for 24 h. Food deprivation-remove the food for 24 h. Wet cage-200 mL tap-water was sprayed into the cage for 24 h. Bedding deprivation-remove the bedding for 24 h. Day-night reversal-reverse the cycle of day and night, viz., daytime cage covered with black cloth, while nighttime cage illuminated with lights. Cold water swimming-the mice were placed in 6~8 °C water for 1 min. Tilted cage-the cage was tilted at 45° for 24 h. Tail caught-hold the tail clip 1 cm away from the tip for 1 min. Illumination overnight-night lighting. Food and water deprivation-remove the food and water for 24 h.

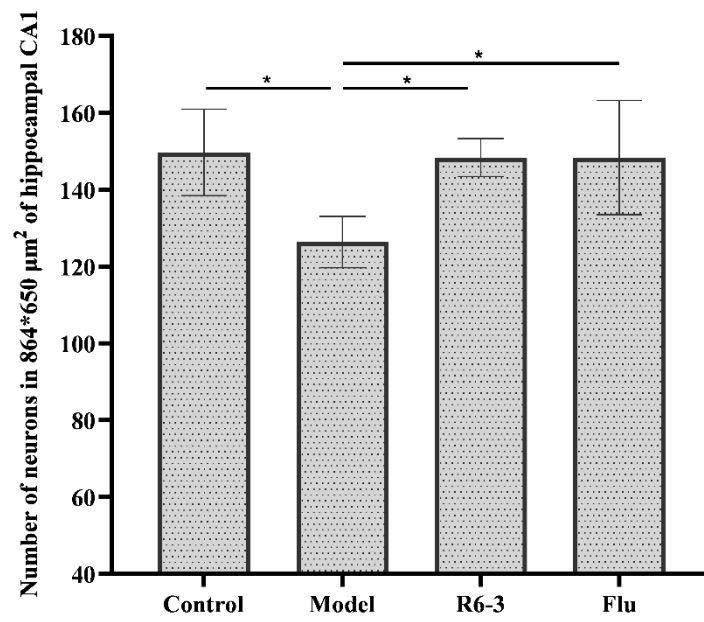


Figure S3. The number of neurons of hippocampal CA1 region. Control-control group, Model-CUMS group, R6-3-*L. plantarum* R6-3 group, and Flu-fluoxetine group, * $p < 0.05$, significantly different between the groups.

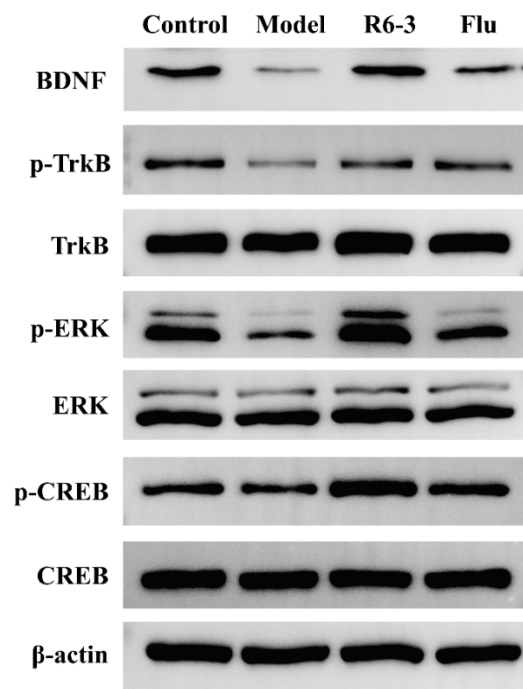


Figure S4. The representative western blot image. Control-control group, Model-CUMS group, R6-3-*L. plantarum* R6-3 group, and Flu-fluoxetine group. β -actin as the internal reference gene.