

Supplementary materials:

**Recapitulation of dynamic nanoparticle transport around tumor
using a triangular multi-chamber tumor-on-a-chip**

You Chen, Yifan Xue, Langtao Xu, Weilin Li, Yiling Chen, Shunan Zheng, Rui Dai,
Jie Liu*

*School of Biomedical Engineering, Shenzhen Campus of Sun Yat-sen University,
Guangming District, Shenzhen, Guangdong, 518107, China*

*** Corresponding Authors:**

Prof. Jie Liu

Email: liujie56@mail.sysu.edu.cn

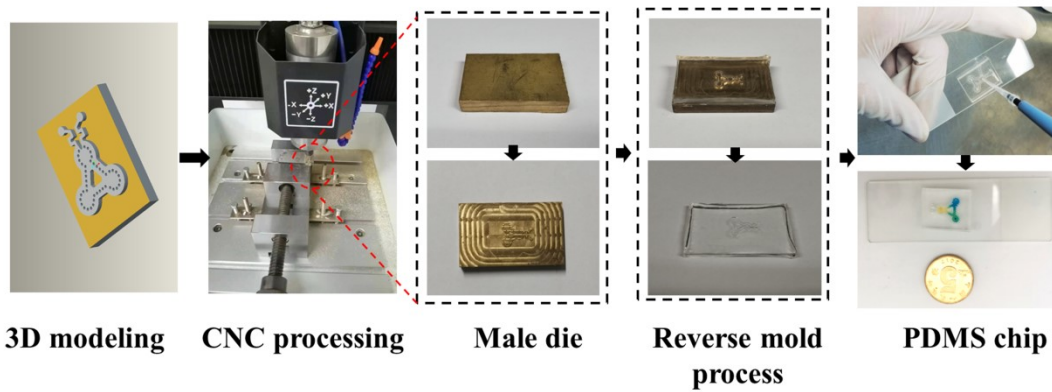


Fig.S1. The process of designing, machining, and packaging of a triangular multi-chamber tumor-on-a-chip.

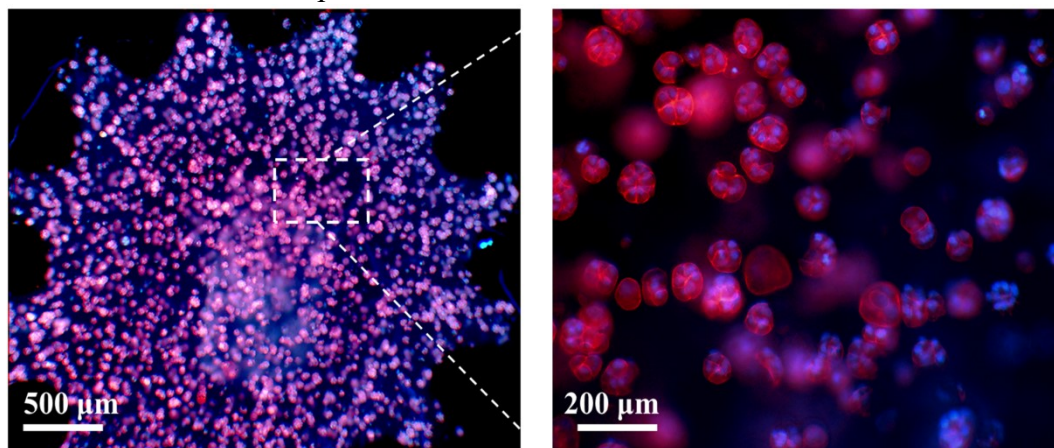


Fig.S2. F-actin staining results of the MCF-7 spheroids cultured in the TM-CTC platform for 7 days. The MCF-7 spheroids exhibited uniform size and distributed throughout the culture chamber.

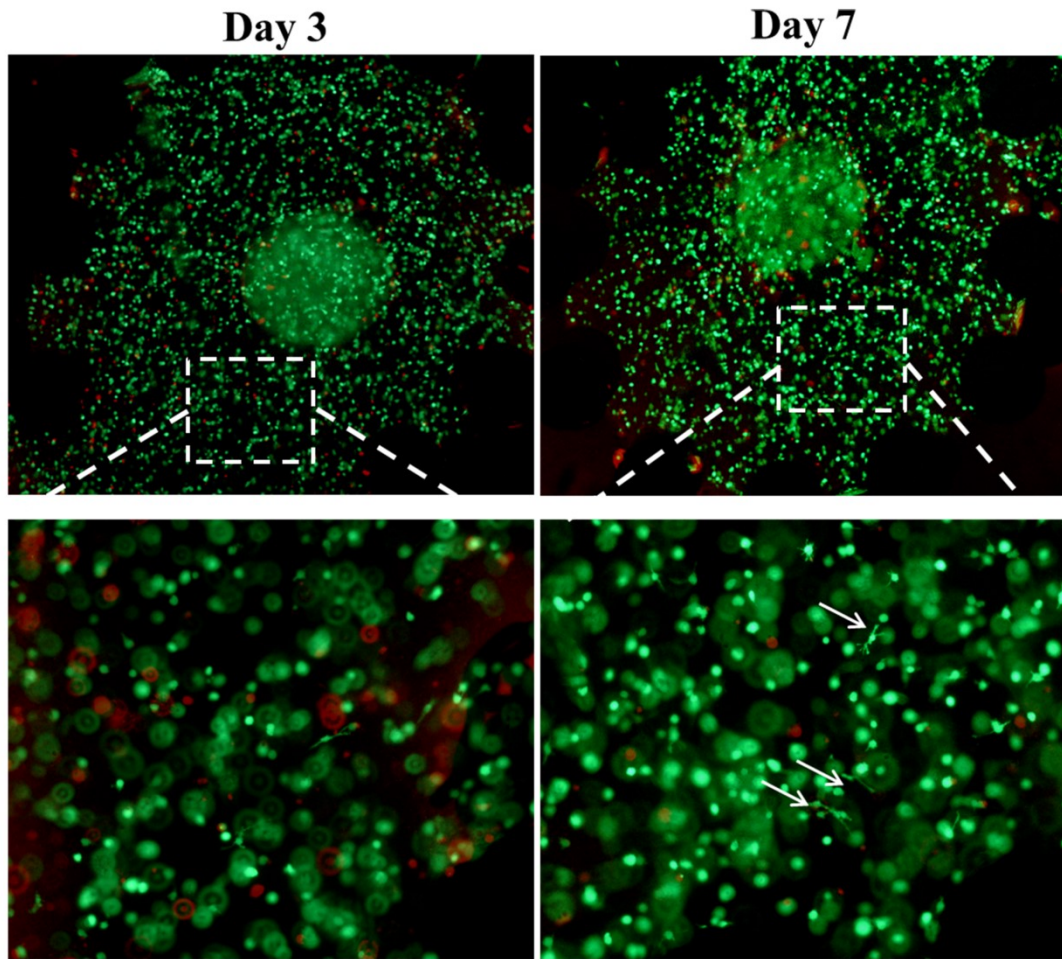


Fig.S3 Results of live/dead staining of HUVEC cells after 3 days and 7 days of culture on the TM-CTC platform. The cells showed good proliferative activity, and some well-spread cells were observed (white arrow).