

ARTICLE

Electronic Supplementary Information (ESI)

Tough fluorescent nanocomposite hydrogel probe based on graphene quantum dots for selective detections Fe³⁺ ions

Juan Du,* Wenli Zhu, Xiaohong She, Qiyu Yu, Qiaoling Yang, Huiping Huang, Chihui Tsou, and De Guzman
Manuel

Material Corrosion and Protection Key Laboratory of Sichuan Province, College of Materials Science and
Engineering, Sichuan University of Science and Engineering, Zigong 643000, China.

Corresponding Author:

E-mail: dujuan@suse.edu.cn.

Supplementary Figures

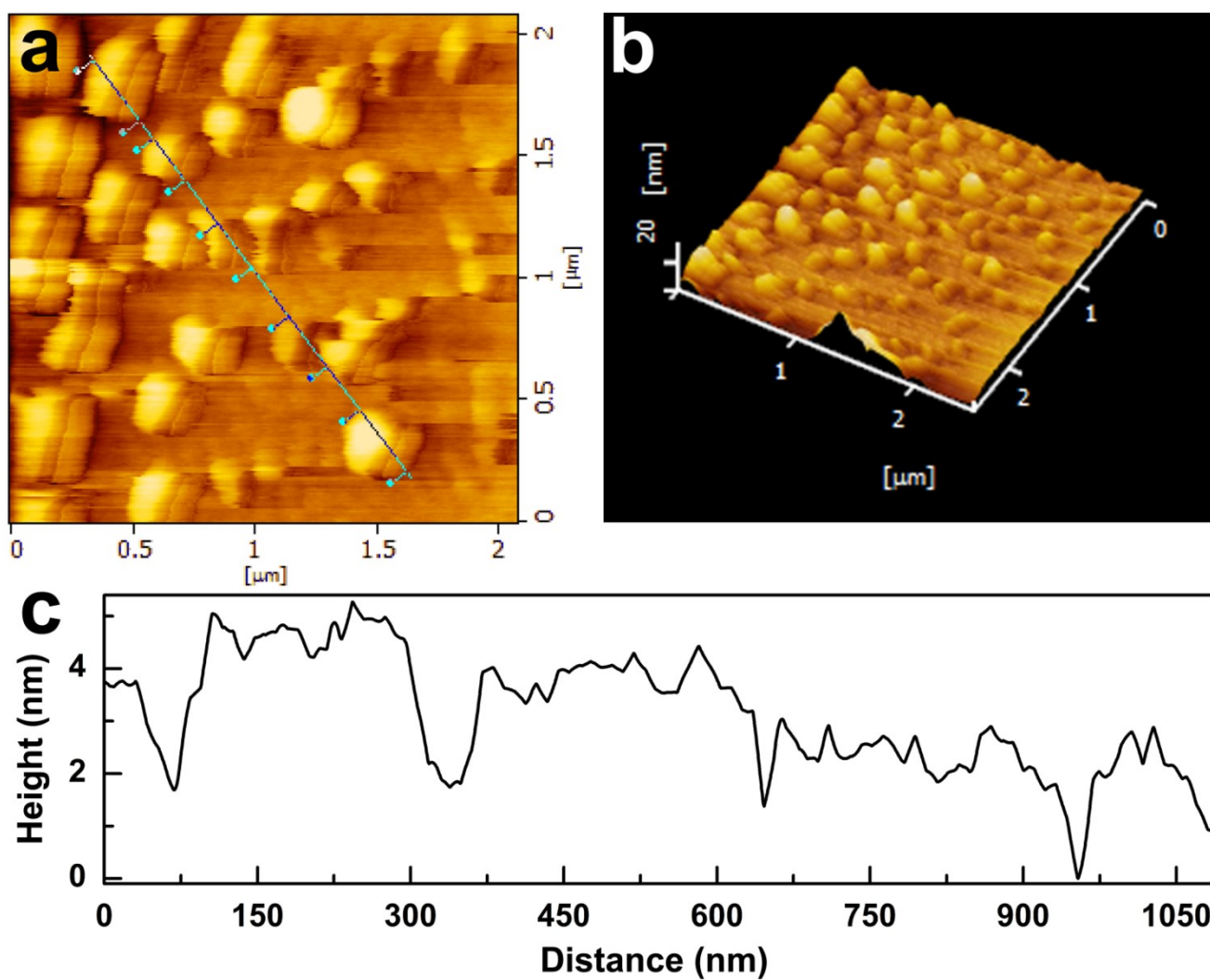


Fig. S1 Atomic force microscopy images (a), 3D topographic map (b) and the height distributions (c) of the synthesized GQDs.

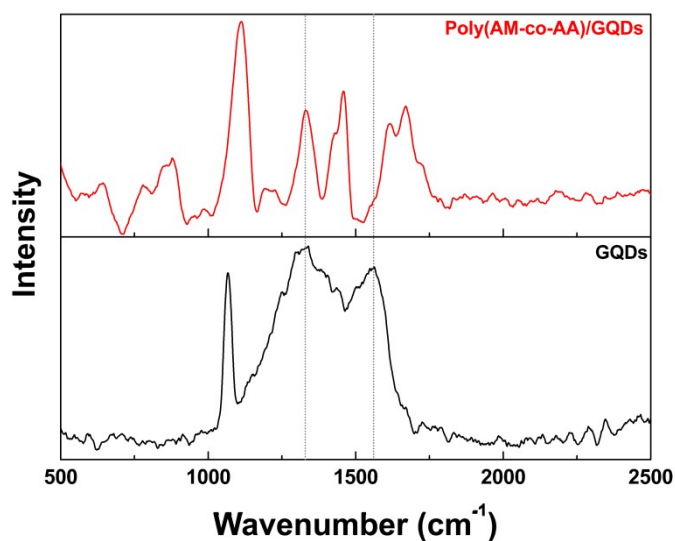


Fig. S2 Raman spectra of GQDs and poly(AM-co-AA)/GQDs nanocomposite hydrogel (1 wt% GQDs).