

Supplementary Informations

Locally-ordered A-site vacancy assisted photoluminescence enhancement in simply rare-earth doped perovskite oxide

Lei Xia^a, Jiyang Xie^{a,b}, and Wanbiao Hu^{a,b}*

^a Key Laboratory of LCR Materials and Devices of Yunnan Province, School of Materials and Energy, Yunnan University, Kunming 650091, P. R. China

^b Electron Microscopy Center, Yunnan University, Kunming 650091, P. R. China

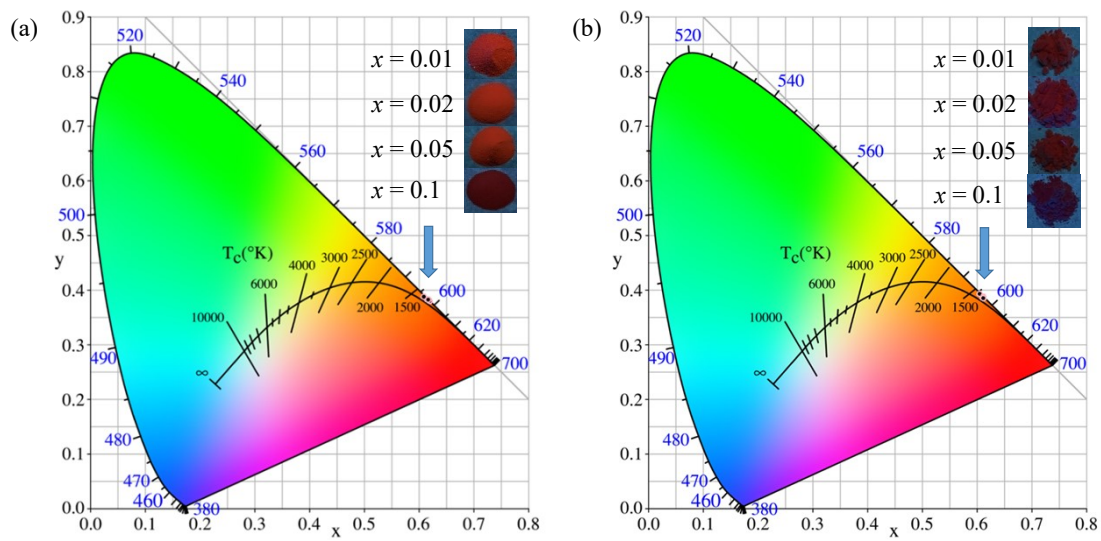


Figure S1. The CIE chromaticity coordinates of (a) V_A -CST- x and (b) CST- x ($x=0.01$, 0.02, 0.05 and 0.1) samples excited at 408 nm, respectively. It can be seen that the emission colors are located in the reddish-orange region of the standard CIE diagram, consistent with the results from the PL emission spectra (Figure 1b,d). The luminescence features (color purity in Table S1) of V_A -CST- x displays much better than those of CST- x .

Table S1. Parameters of photoluminescence features (CIE, and CP) of V_A-CST-*x* andCST-*x* (*x*=0.01, 0.02, 0.05 and 0.1) samples.

Samples	Doping level (<i>x</i>)	Chromaticity		Color purity (CP) (%)
		coordinates		
		<i>x</i>	<i>y</i>	
V _A -CST- <i>x</i>	0.01	0.6195	0.3798	78.82
	0.02	0.6164	0.3829	78.23
	0.05	0.6167	0.3825	78.27
	0.1	0.6101	0.3881	76.98
CST- <i>x</i>	0.01	0.6050	0.3927	76.02
	0.02	0.6104	0.3872	77.00
	0.05	0.6114	0.3883	77.31
	0.1	0.6117	0.3856	77.23

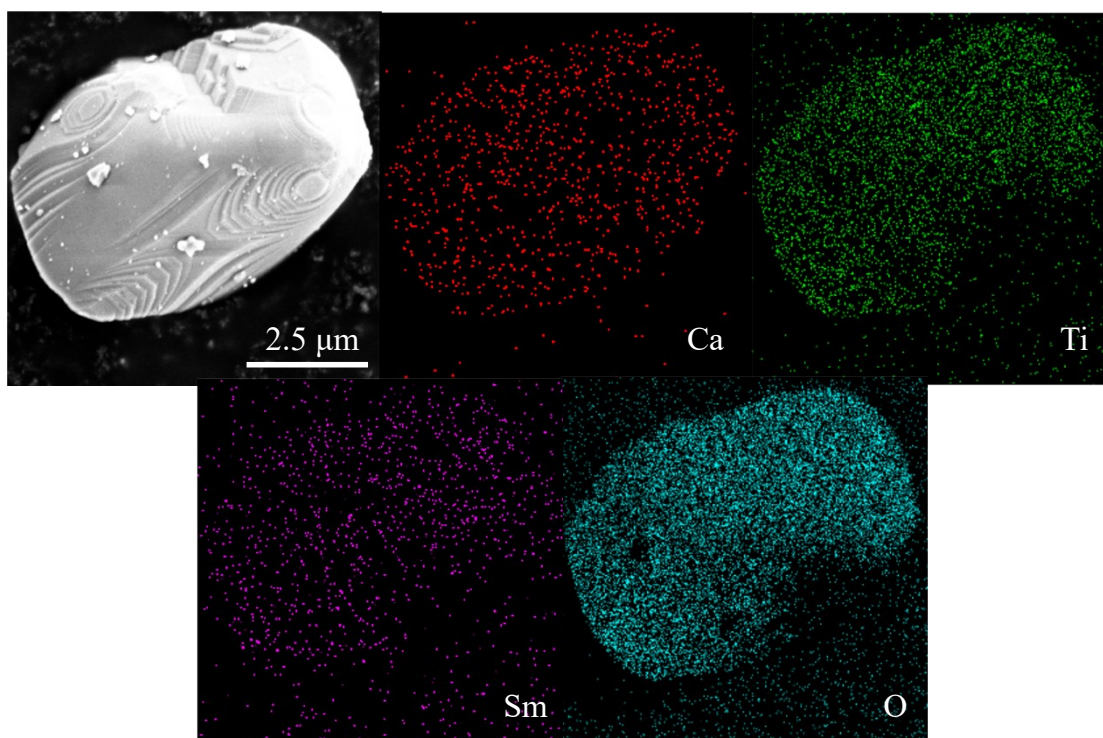


Figure S2. The SEM-EDS pattern of V_A-CST-0.1 and the element mapping for elements Ca, Ti, Sm and O. It can be seen that all the cations, especially the dopants Sm³⁺, are uniformly distributed, confirming the successful incorporation.

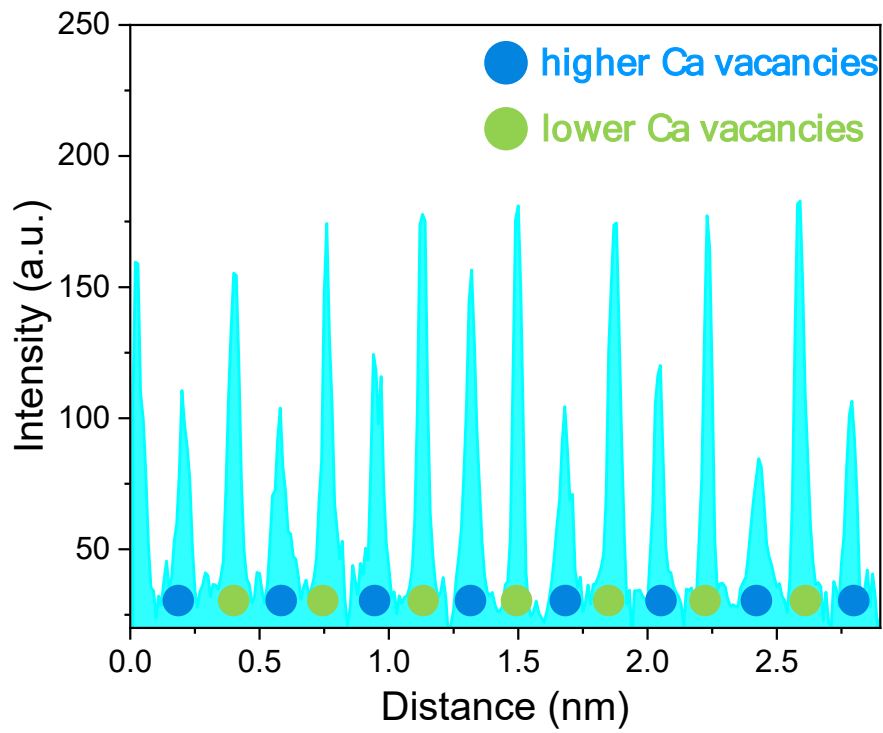


Figure S3. The intensity profiles of Ca vacancies in V_A -CST-0.02. It can be seen that the distribution of higher V_A and lower V_A is very obvious. This is well consistent with the ordered arrangements of superlattice-like structure.