

1 Supporting Information for

2 **Comparison of the efficacy of seven types of microneedles for**  
3 **treating rabbit hypertrophic scar model**

4 Fang Liu<sup>1‡</sup>, Yingzhi Luo<sup>2‡</sup>, Huan Chen<sup>1</sup>, Shengjing Xu<sup>3</sup>, Dongyan Zhang<sup>3</sup>, Hong Sang<sup>1\*</sup>,  
5 Chenjie Xu<sup>4\*</sup>, Min Zhang<sup>3\*</sup>

6 ‡ These authors contributed equally to this work.

7 <sup>1</sup> Department of Dermatology, Jinling Hospital, School of Medicine, Nanjing University,  
8 Nanjing, China.

9 <sup>2</sup> Department of Dermatology, Affiliated Hangzhou First People's Hospital, Zhejiang  
10 University School of Medicine, Hangzhou 310006, China

11 <sup>3</sup> Department of Dermatology, The Affiliated Jiangning Hospital with Nanjing Medical  
12 University, Nanjing 211100, China.

13 <sup>4</sup> Department of Biomedical Engineering, City University of Hong Kong, 83 Tat Chee Avenue,  
14 Kowloon, Hong Kong SAR, China.

15 \* Corresponding to [zhangmin76ch@163.com](mailto:zhangmin76ch@163.com); [chenjie.xu@cityu.edu.hk](mailto:chenjie.xu@cityu.edu.hk);  
16 [sanghong@nju.edu.cn](mailto:sanghong@nju.edu.cn)

17

18

19

20

21

22

24 Table S1. The biomarkers expressions of each microneedle treated groups.

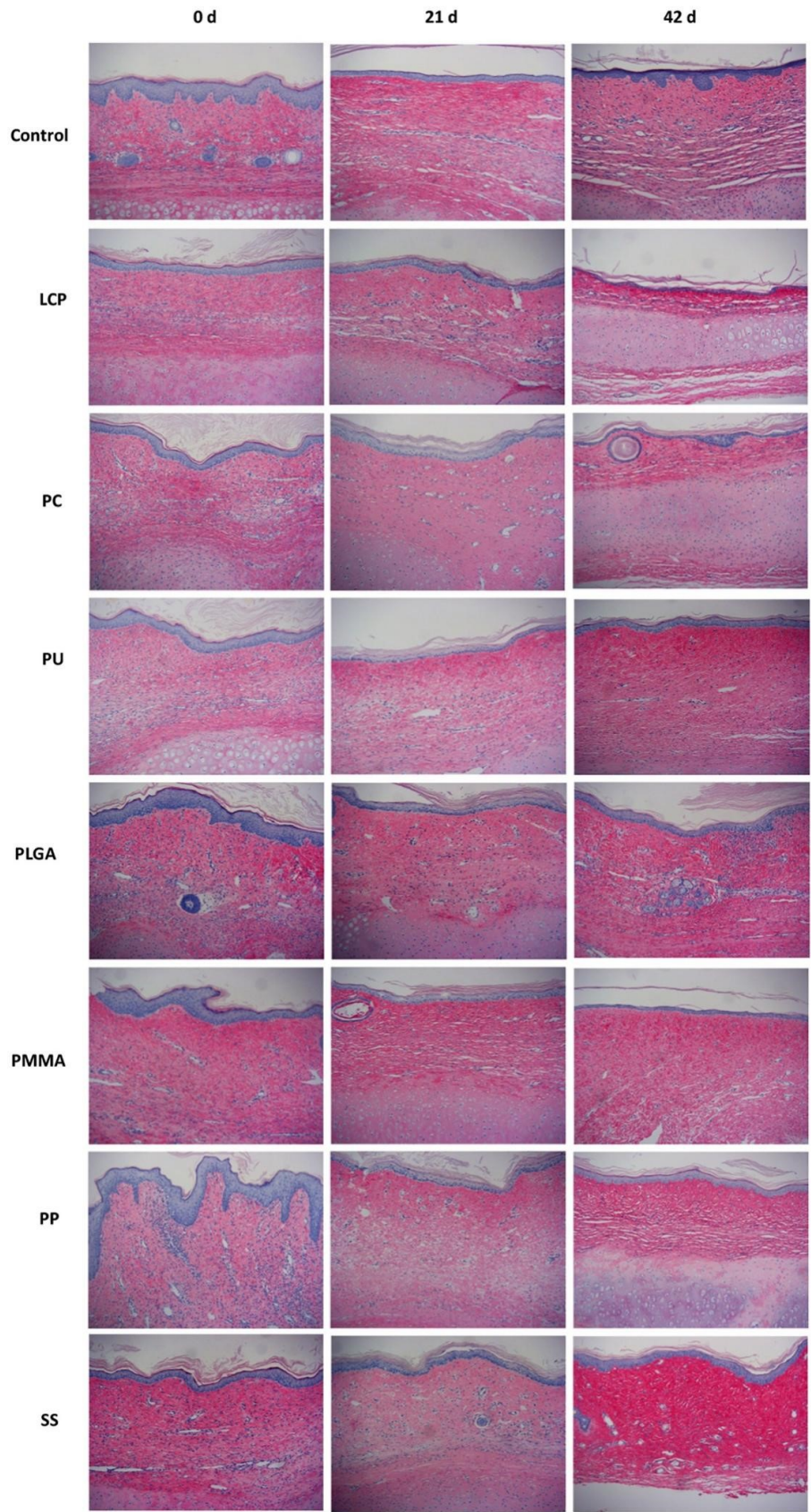
| Picro-Sirius Red Staining |                 |                 | $\alpha$ -SMA   |                 |                 | Ki-67           |                 |                 | TGF- $\beta$ 1  |                 |
|---------------------------|-----------------|-----------------|-----------------|-----------------|-----------------|-----------------|-----------------|-----------------|-----------------|-----------------|
| 0 day                     | 21 day          | 42 day          | 0 day           | 21 day          | 42 day          | 0 day           | 21 day          | 42 day          | 0 day           | 21 day          |
| 1.85 $\pm$ 0.06           | 1.78 $\pm$ 0.03 | 1.82 $\pm$ 0.09 | 1.94 $\pm$ 0.13 | 1.99 $\pm$ 0.09 | 2.44 $\pm$ 0.14 | 2.41 $\pm$ 0.08 | 2.30 $\pm$ 0.06 | 2.32 $\pm$ 0.09 | 1.00 $\pm$ 0    | 1.00 $\pm$ 0    |
| 1.99 $\pm$ 0.11           | 1.59 $\pm$ 0.09 | 1.74 $\pm$ 0.07 | 1.90 $\pm$ 0.04 | 2.11 $\pm$ 0.05 | 2.34 $\pm$ 0.06 | 2.01 $\pm$ 0.13 | 1.71 $\pm$ 0.04 | 1.89 $\pm$ 0.08 | 0.04 $\pm$ 0.01 | 0.74 $\pm$ 0.24 |
| 2.32 $\pm$ 0.09           | 1.68 $\pm$ 0.06 | 1.50 $\pm$ 0.06 | 2.20 $\pm$ 0.08 | 2.54 $\pm$ 0.11 | 2.55 $\pm$ 1.13 | 2.51 $\pm$ 0.14 | 1.25 $\pm$ 0.03 | 1.81 $\pm$ 0.12 | 0.92 $\pm$ 0.05 | 0.70 $\pm$ 0.11 |
| 2.43 $\pm$ 0.07           | 2.22 $\pm$ 0.10 | 1.70 $\pm$ 0.08 | 2.38 $\pm$ 0.06 | 2.40 $\pm$ 0.06 | 2.20 $\pm$ 0.04 | 2.20 $\pm$ 0.07 | 1.81 $\pm$ 0.11 | 1.34 $\pm$ 0.03 | 1.02 $\pm$ 0.05 | 3.08 $\pm$ 0.69 |
| 2.59 $\pm$ 0.11           | 1.93 $\pm$ 0.06 | 1.93 $\pm$ 0.03 | 2.27 $\pm$ 0.09 | 2.06 $\pm$ 0.13 | 2.25 $\pm$ 0.11 | 1.92 $\pm$ 0.07 | 2.05 $\pm$ 0.06 | 2.32 $\pm$ 0.11 | 1.07 $\pm$ 0.13 | 0.95 $\pm$ 0.07 |
| 2.04 $\pm$ 0.02           | 1.77 $\pm$ 0.05 | 1.71 $\pm$ 0.06 | 2.52 $\pm$ 0.04 | 2.01 $\pm$ 0.04 | 2.34 $\pm$ 0.03 | 2.61 $\pm$ 0.16 | 1.24 $\pm$ 0.04 | 1.67 $\pm$ 0.09 | 1.52 $\pm$ 0.1  | 0.91 $\pm$ 0.19 |
| 1.39 $\pm$ 0.04           | 1.23 $\pm$ 0.04 | 1.91 $\pm$ 0.08 | 2.19 $\pm$ 0.07 | 2.41 $\pm$ 0.03 | 2.62 $\pm$ 0.11 | 2.08 $\pm$ 0.07 | 1.67 $\pm$ 0.04 | 1.50 $\pm$ 0.05 | 1.35 $\pm$ 0.16 | 1.07 $\pm$ 0.34 |
| 2.23 $\pm$ 0.05           | 1.76 $\pm$ 0.06 | 2.78 $\pm$ 0.10 | 2.49 $\pm$ 0.1  | 2.43 $\pm$ 0.16 | 1.93 $\pm$ 0.04 | 2.11 $\pm$ 0.01 | 2.24 $\pm$ 0.05 | 2.77 $\pm$ 0.18 | 1.18 $\pm$ 0.2  | 3.97 $\pm$ 1.78 |

25

26

27

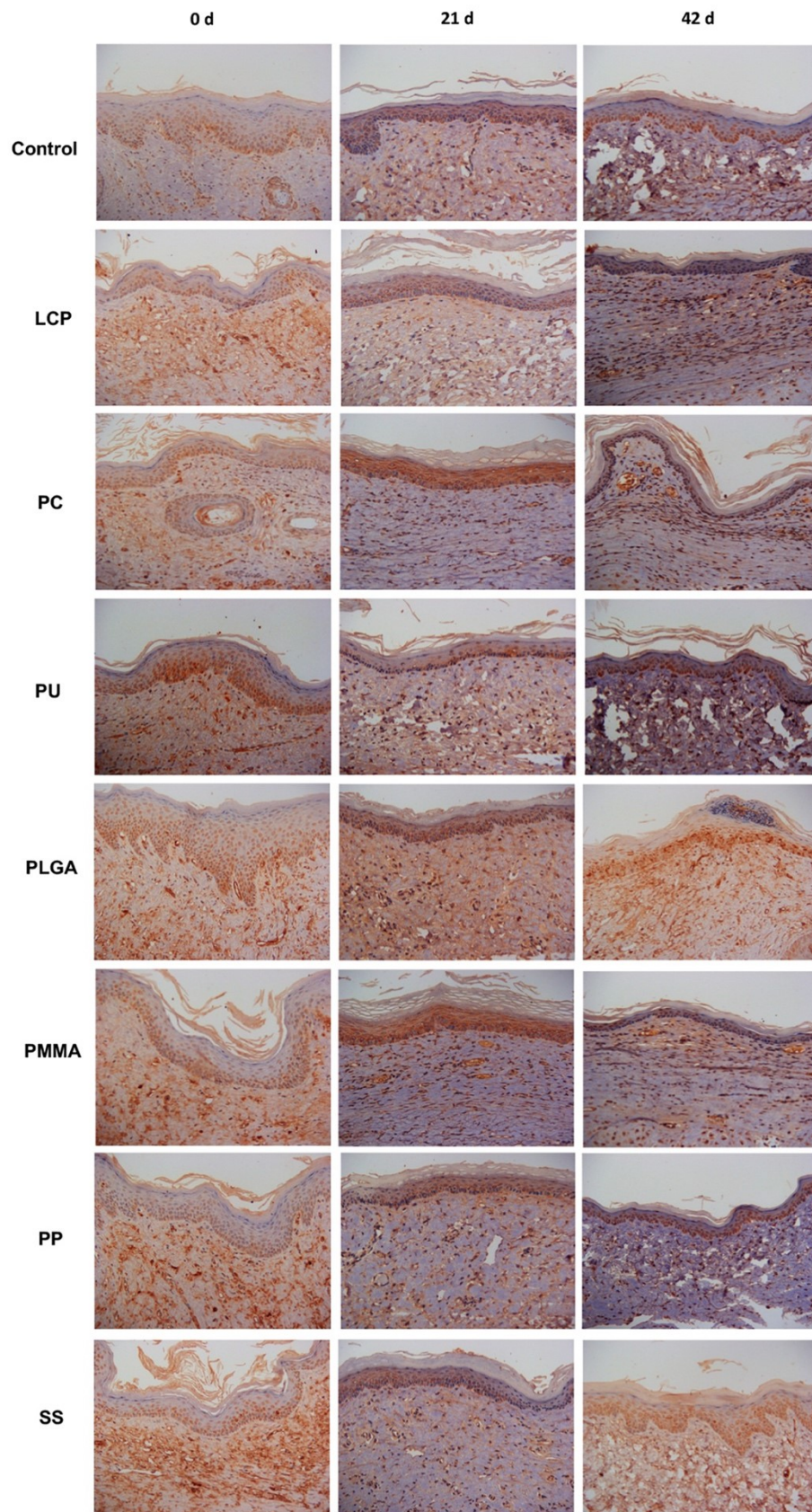
28



29

30 SI Figure S1: Evaluation of collagen deposition by Picro-Sirius Red Staining. The collagen in  
 31 the tissue is stained for red color.

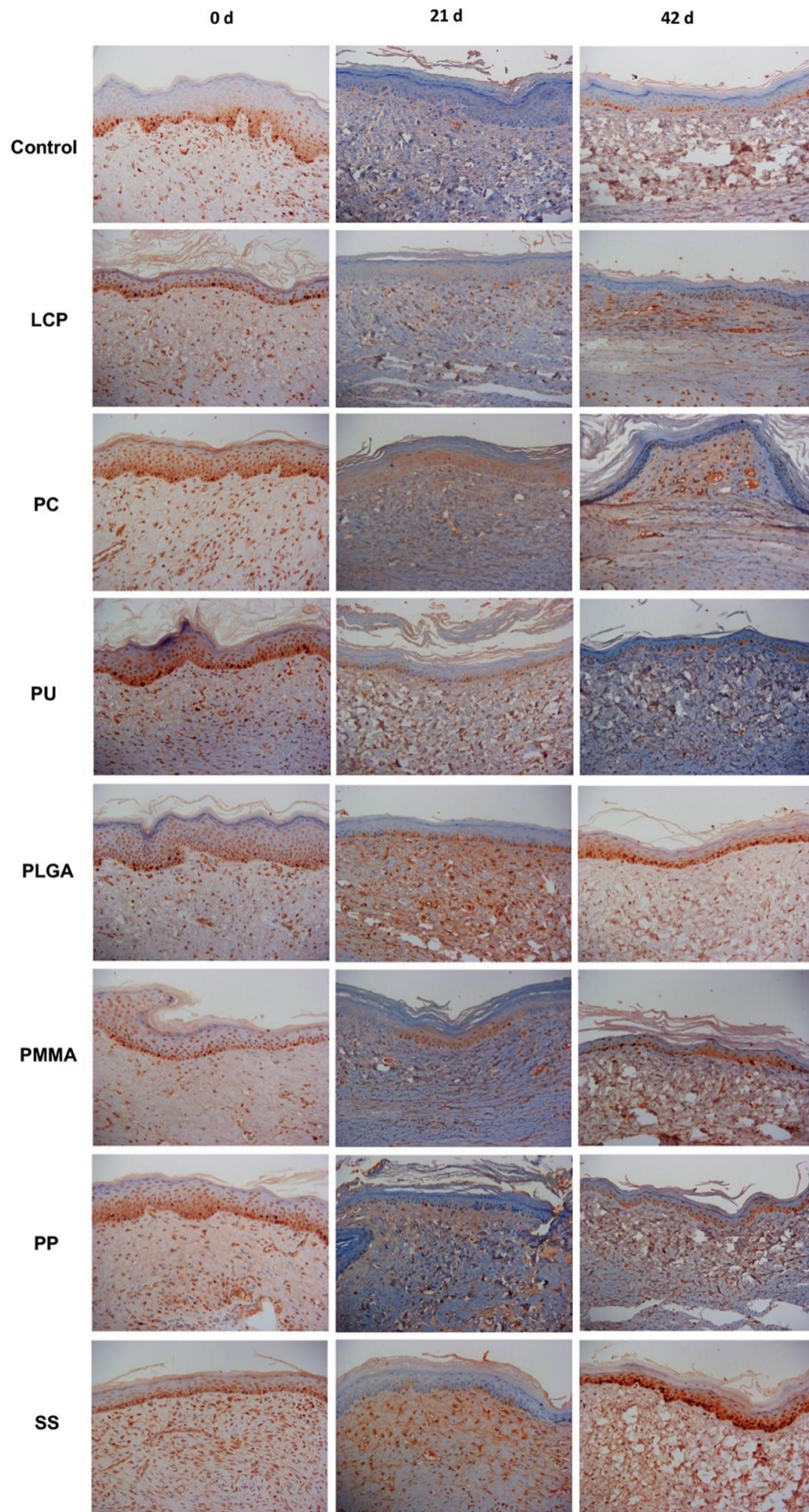




32

33 SI Figure S2 The expression of  $\alpha$ -SMA in the scar tissue during the MN treatment. The target  
 34 protein is stained for brown color.  $\alpha$ -SMA mainly locates at the cells of dermis.





35

36 SI Figure S3 The expression of Ki-67 in the scar tissue during the MN treatment. The target  
 37 protein is stained for brown color. Ki-67 locates at the epidermal basal layer as well as dermis.

