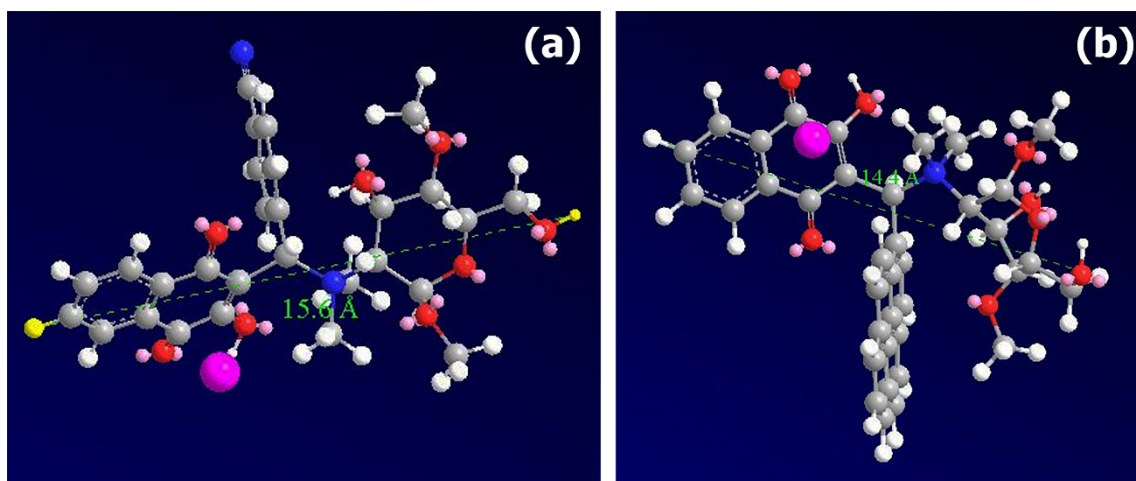


## Lawsonite-Bentonite Hybrid Systems for pH-Dependent Sustained Release of Ciprofloxacin

P. Sirajunnisa,<sup>a</sup> Cheemadan Sabna,<sup>a</sup> A. Aswin,<sup>a</sup> S. Prathapan<sup>b</sup> and G. S. Sailaja<sup>\*a,c,d</sup>



**Fig. S1.** Energy minimization diagram of (a) QLMNTCN and (b) QLMNTPY

**Table. S1.** CHN Elemental analysis of NaBen, QCB and QPB

Sample	C%	H%	N%
NaBen	0.15	ND	0.07
QCB	37.08	1.97	2.34
QPB	47.04	3.29	3.42

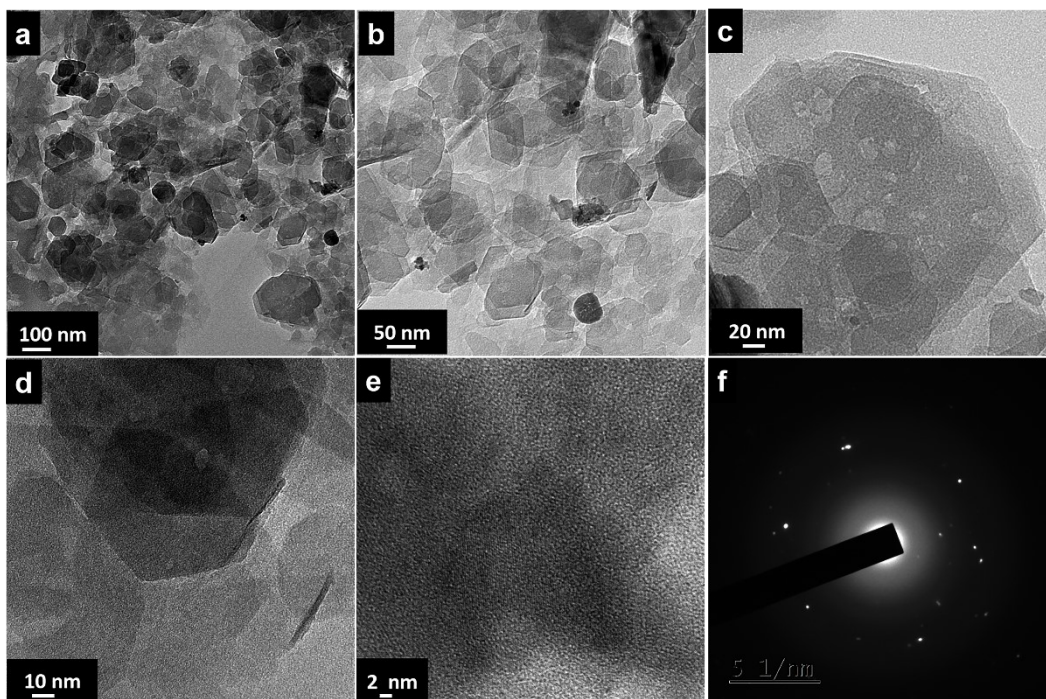


Fig. S2 TEM microstructures and SAED pattern of NaBen

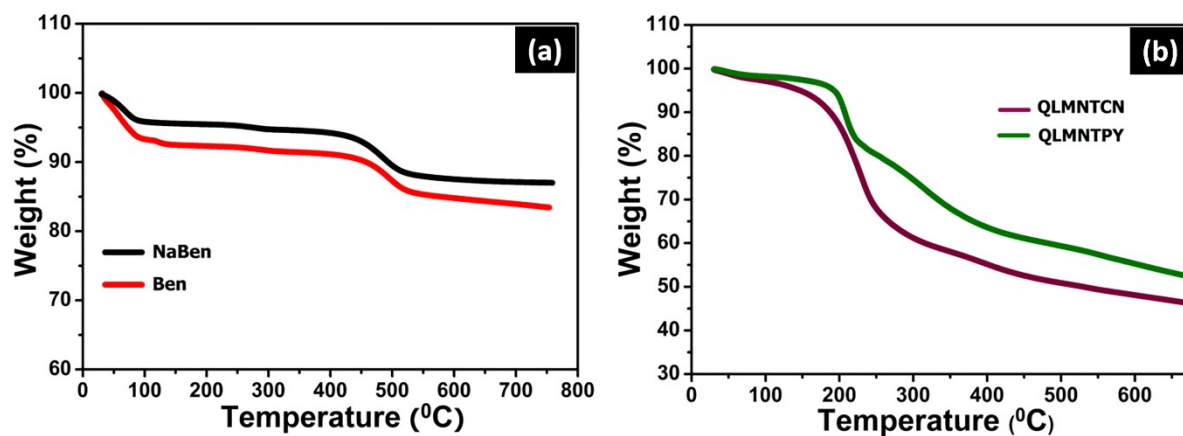


Fig. S3 Thermograms of (a) Ben, NaBen; (b) QLMNTCN and QLMNTPY