

Supplementary Information

High selectivity of a novel D-A structured copolymer as gas chromatographic stationary phase toward aromatic isomers

Yongrui He^{a,b}, Bing Zheng^c, Meiling Qi^{a*}, Lijun Huo^{c*}

^aKey Laboratory of Cluster Science, Ministry of Education of China, School of Chemistry and Chemical Engineering and Analysis & Testing Center, Beijing Institute of Technology, Beijing, 100081, China.

^bSchool of Pharmacy, Weifang Medical University Weifang, 261053, China.

^cSchool of Chemistry Beihang University, Beijing 100191, China.

*Corresponding authors.

E-mail addresses: mlqi@bit.edu.cn (M. Qi), huolijun@buaa.edu.cn

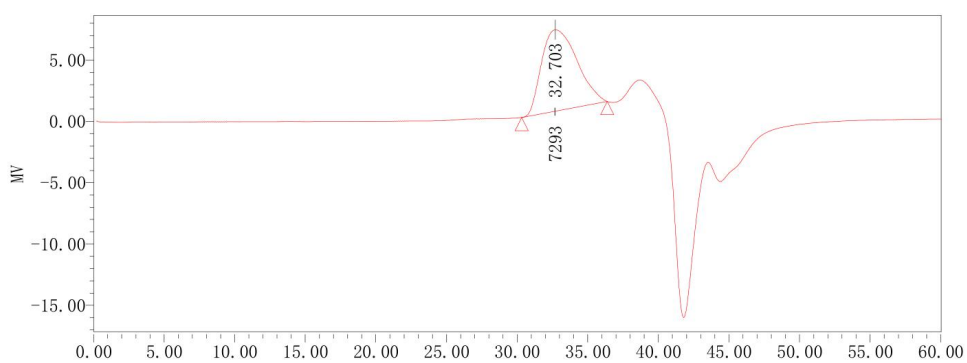


Fig. S1. GPC curve of PBDB-T.

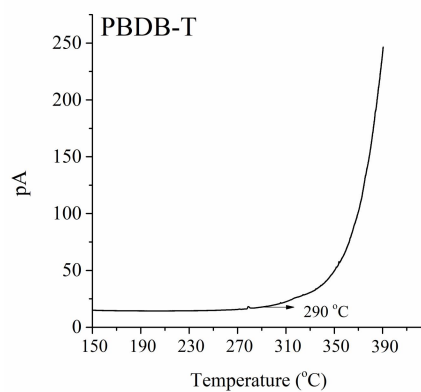


Fig. S2. Column bleeding curves of the PBDB-T column.

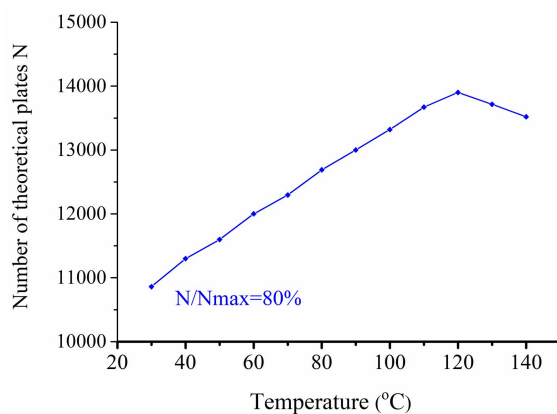


Fig. S3. Determination of minimum allowable operating temperature (MiAOT) of the PBDB-T column by naphthalene.

Table S1

Repeatability and reproducibility of the PBDB-T capillary column on the retention times (t_R , min) of the indicated isomers ($n = 5$).

Analytes	Run-to-run		Day-to-day		Column-to-column	
	t_R (min)	RSD (%)	t_R (min)	RSD (%)	t_R (min)	RSD (%)
Chloronitrobenzene						
<i>o</i> -	14.857	0.02	14.853	0.21	14.845	3.9
<i>m</i> -	15.106	0.04	15.104	0.25	15.007	3.4
<i>p</i> -	15.728	0.05	15.724	0.34	15.719	3.6
Bromonitrobenzene						
<i>m</i> -	8.067	0.03	8.064	0.22	8.057	2.9
<i>p</i> -	8.239	0.03	8.235	0.32	8.228	3.0
<i>o</i> -	10.052	0.04	10.049	0.35	10.041	3.5