

## Supporting Information

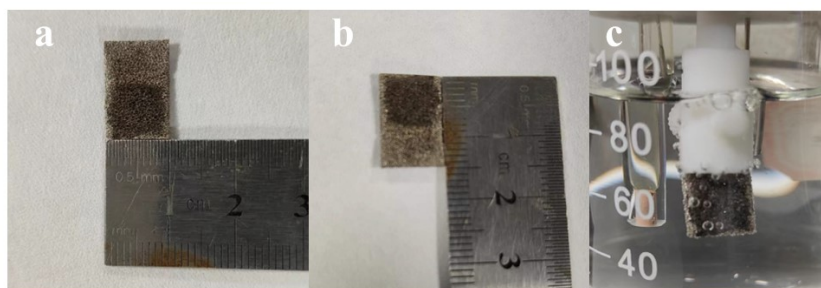


Fig. S1 Digital photos of self-made working electrode (a-b) and working electrode during OER catalytic process (c).

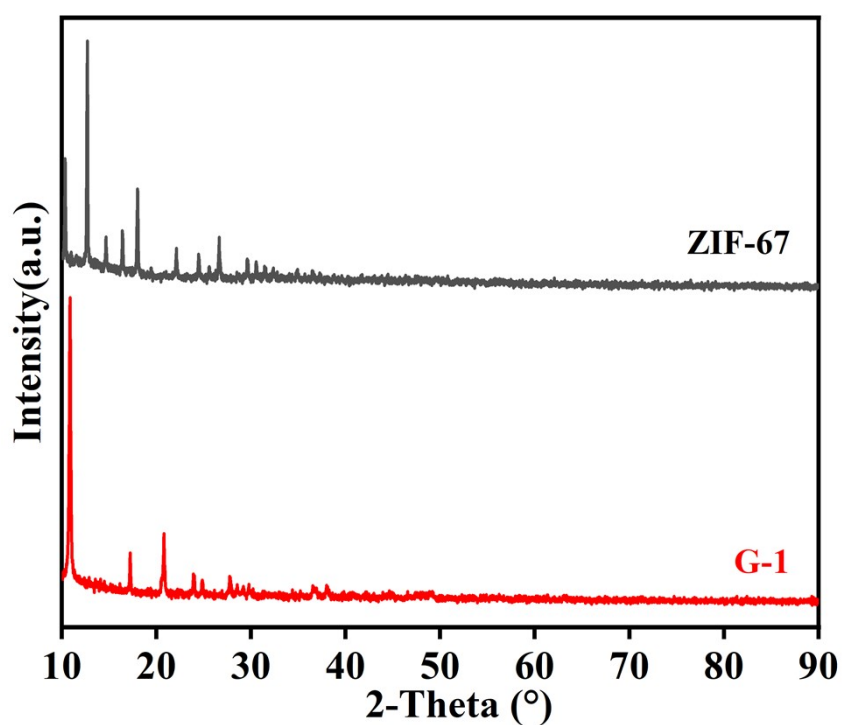


Fig. S2 the XRD pattern of the ZIF-67 and G-1.

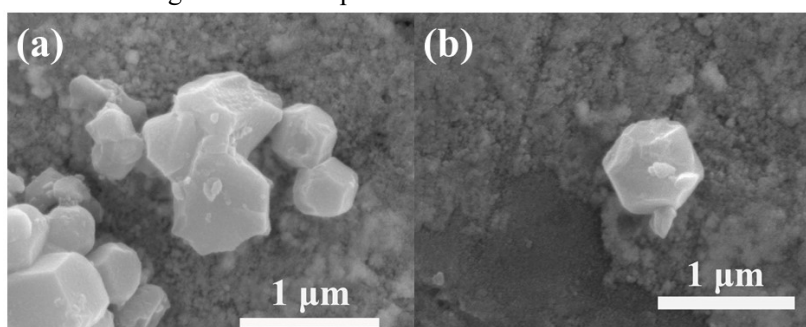


Fig. S3 the SEM images of ZIF-67.

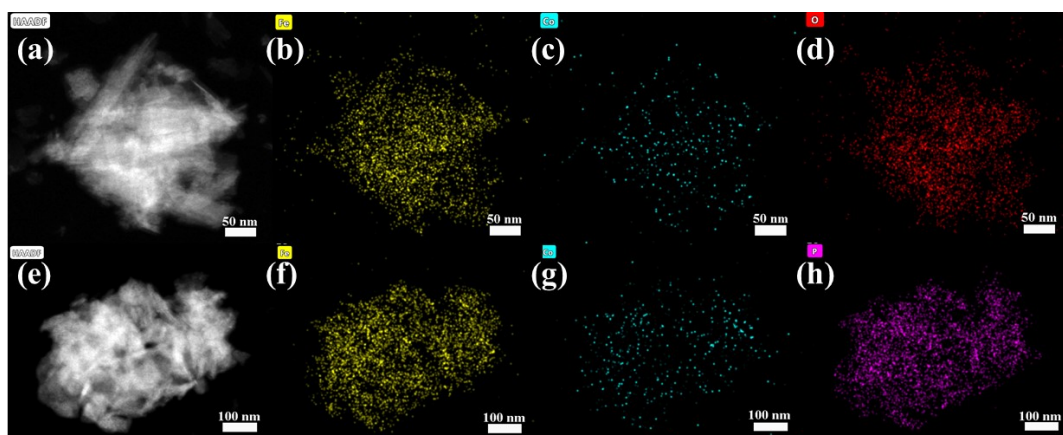


Fig. S4 EDS mapping of FG-1(a–d) and FeP/CoP(e–f).

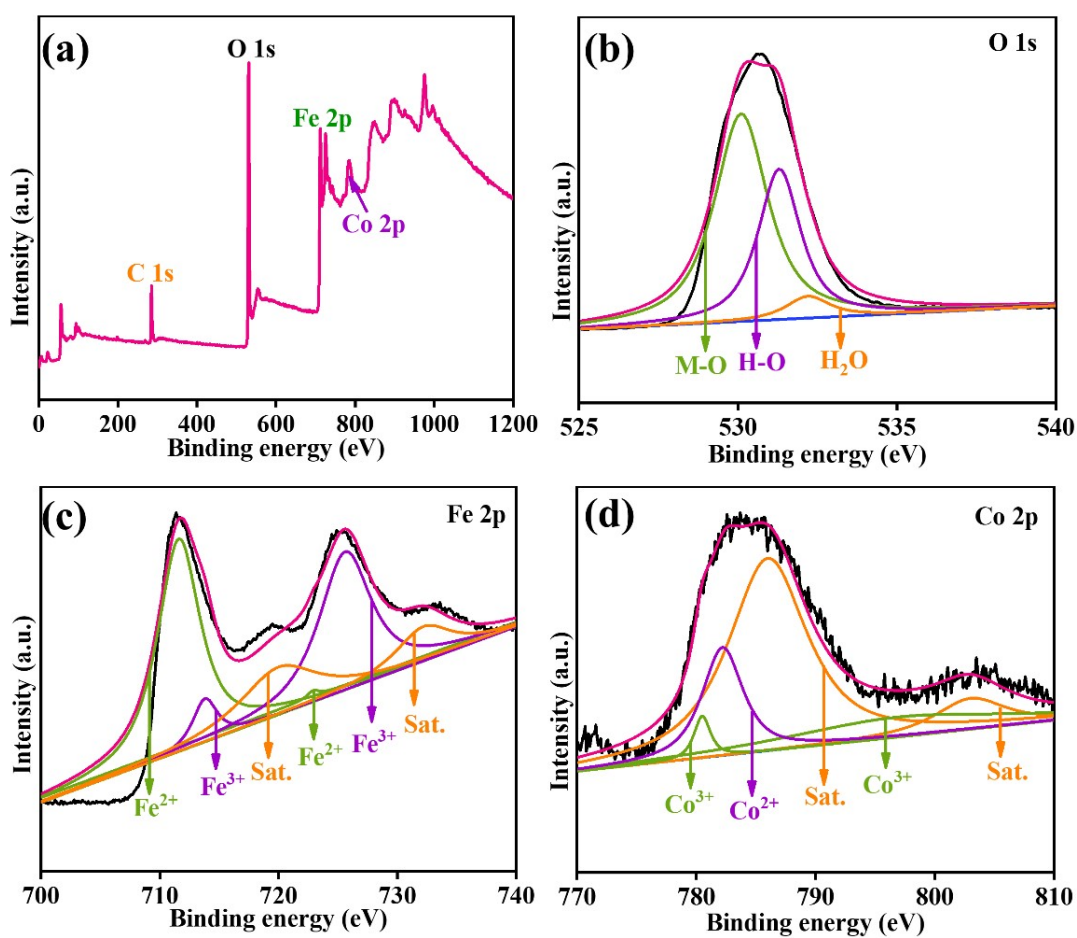


Fig. S5 (a)XPS full spectrum, (b) O 1s fine spectrum, (c) Fe 2p fine spectrum, (d) Co 2p fine spectrum of FG-1.