

Supplementary information

Modification the surface of $\text{Mn}_{0.25}\text{Cd}_{0.75}\text{S}$ polyhedra with NiB: reducing the surface work function and promoting electrons migration for enhanced photocatalytic hydrogen production

Yuan-Yuan Qin,[‡] Shi-Yu Wang,[‡] Yu-Meng Wang, Feng-Yan Li*, Lin Xu

Key Laboratory of Polyoxometalate and Reticular Material Chemistry of Ministry of Education, College of Chemistry, Northeast Normal University, Changchun 130024, P. R. China.

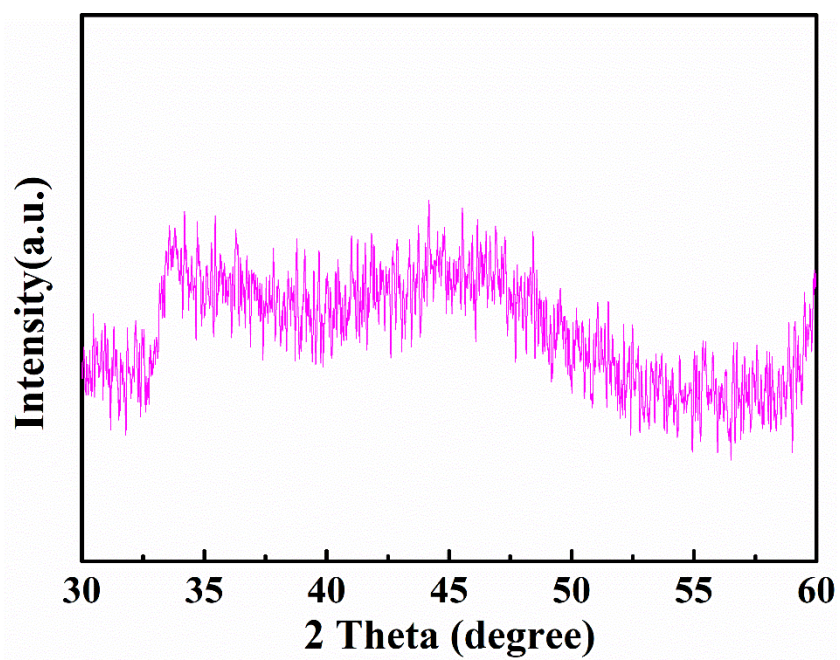


Fig.S1 XRD pattern of NiB.

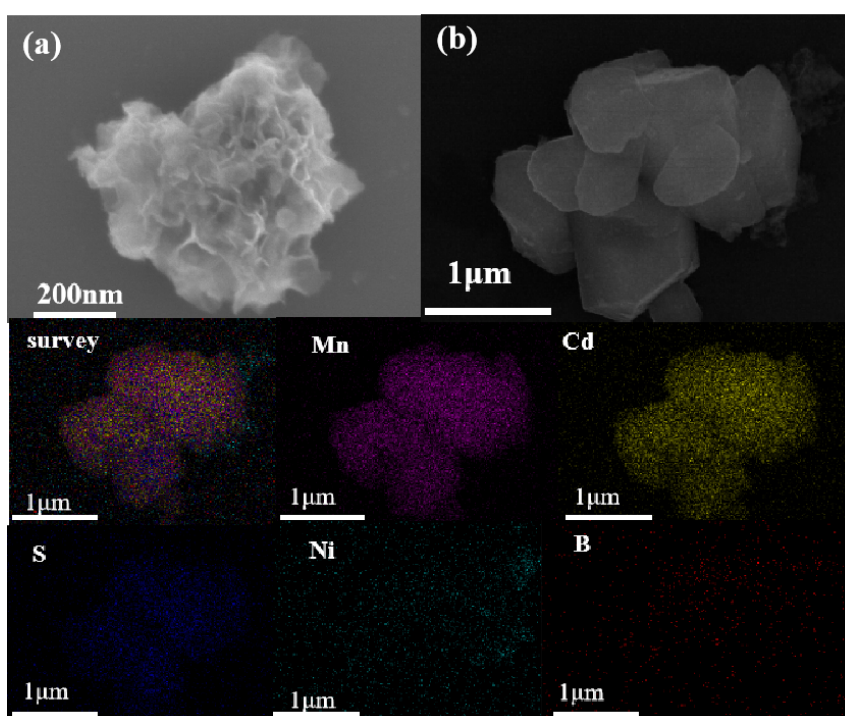


Fig. S2 (a) SEM of NiB; (b)SEM and SEM-mapping of 10%NiB/MCS.

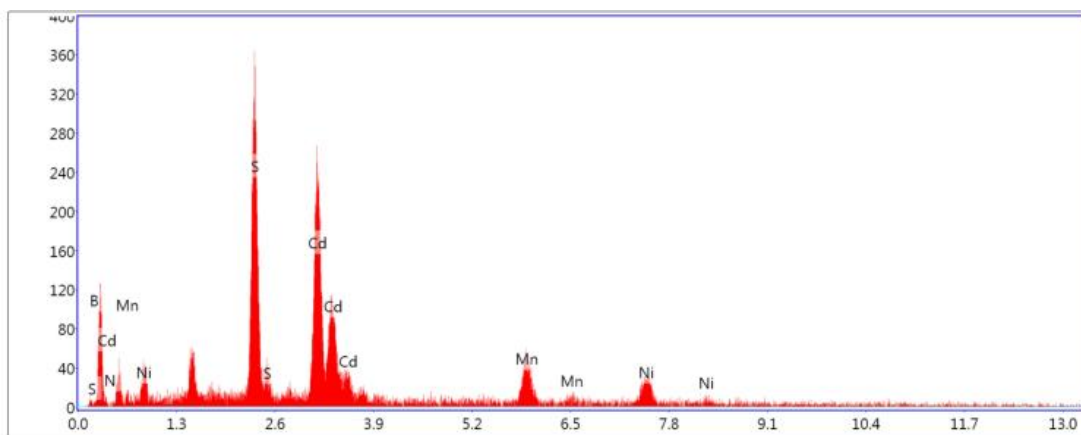


Fig. S3 Energy-dispersive X-ray (EDX) spectrum of 10%NiB/MCS.

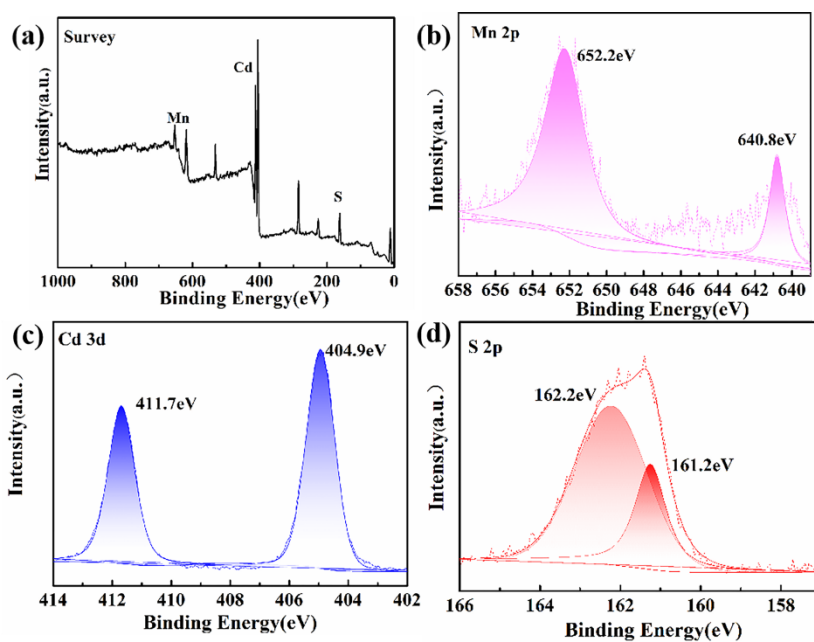


Fig. S4 XPS Spectra of the 10%NiB/MCS (a) survey; (b) Mn 2p; (c) Cd 3d; (d) S 2p