

Synthesis of Cationic Ruthenium(II) complex and non-enzymatic Glucose Sensor Properties

**Serkan DAYAN^{a*}, Namık Özdemir^b, Diğdem ERDENER^c, Osman DAYAN^{c*},
Bekir ÇETINKAYA^d**

^a *Drug Application and Research Center, Erciyes University, 38039 Kayseri, Turkey*

^b *Department of Mathematics and Science Education, Faculty of Education,
Ondokuz Mayıs University, 55139 Samsun, Turkey*

^c *Department of Chemistry, Faculty of Arts and Science, Çanakkale Onsekiz Mart University,
17100, Çanakkale, Turkey*

^d *Department of Chemistry, Ege University, 35100, Bornova, İzmir, Turkey*

Contents of the supporting information file:

- Figure-S1. FT-IR spectra of 2
- Figure-S2. ¹H-NMR spectra of 2
- Figure-S3. ESI-MS spectra of 2
- Figure-S4. UV-vis spectra of 2
- Figure-S5. CV voltammogram of 2
- Figure-S6. TG curve of 2
- Figure-S7. The cross-sectional analysis of the Ru(II)-RGO-TiO₂@FTO working electrode
- Figure-S8. The SEM-EDX mapping analysis of the Ru(II)-RGO-TiO₂@FTO working electrode

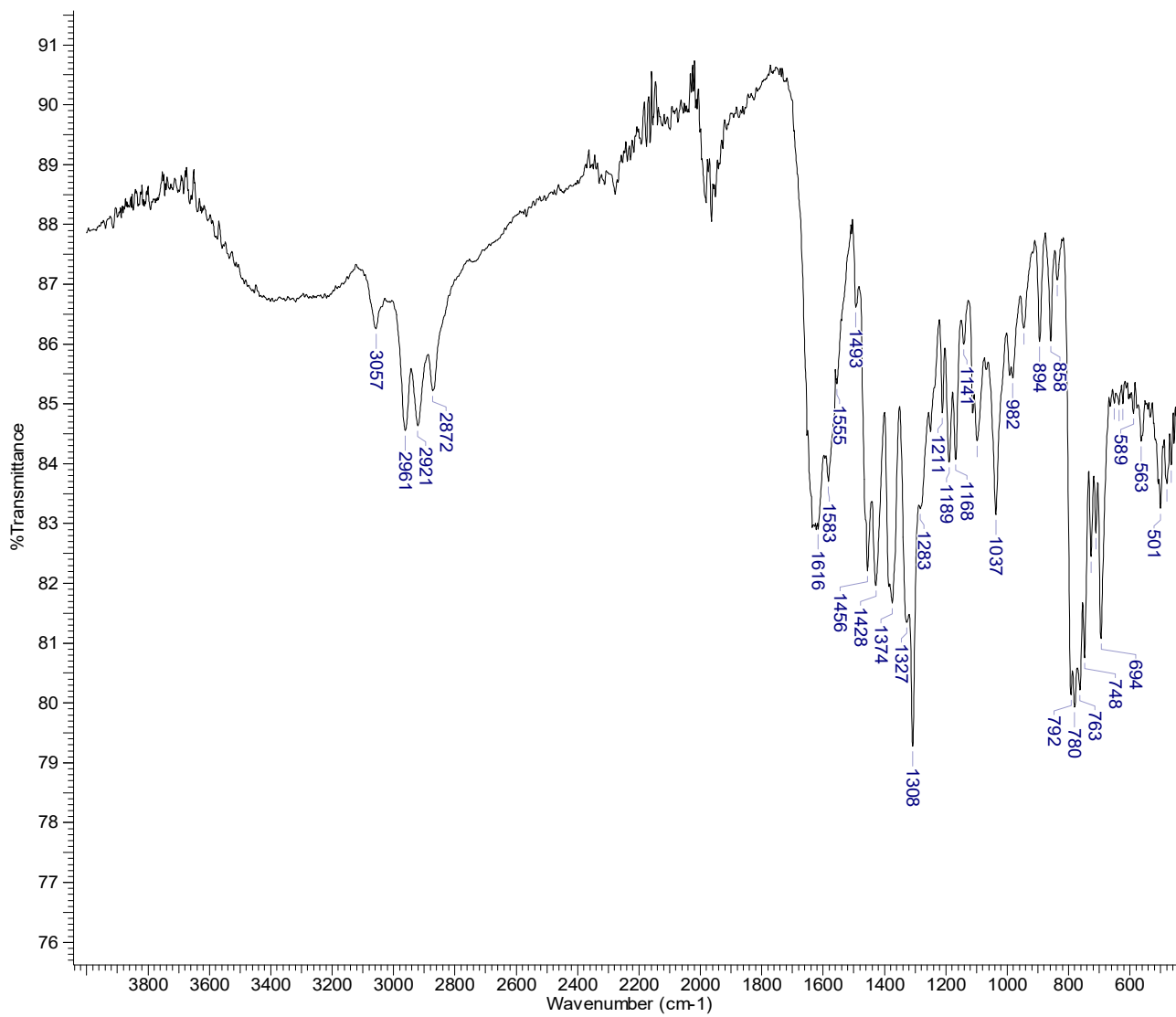
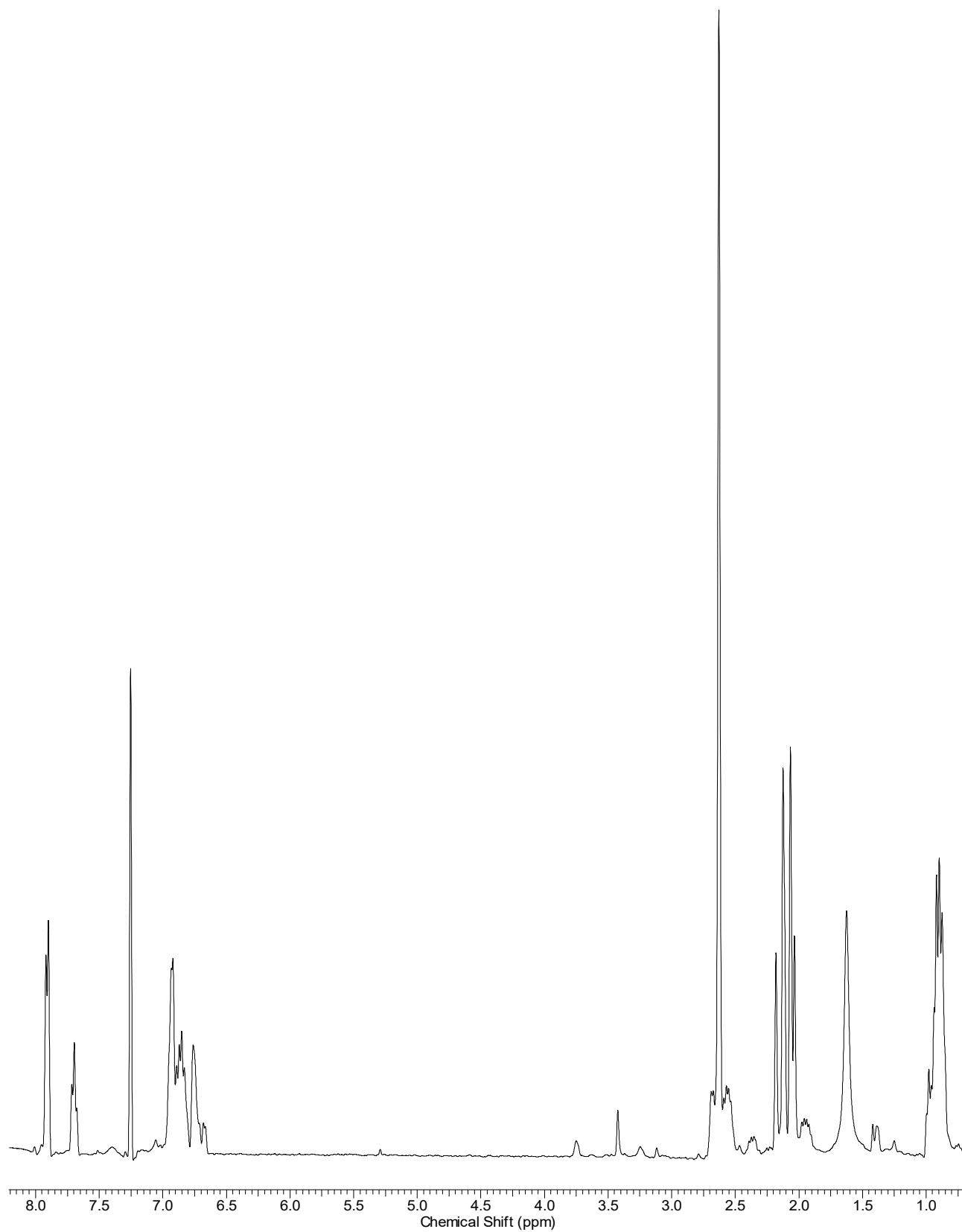


Figure-S1. FT-IR spectra of **2**



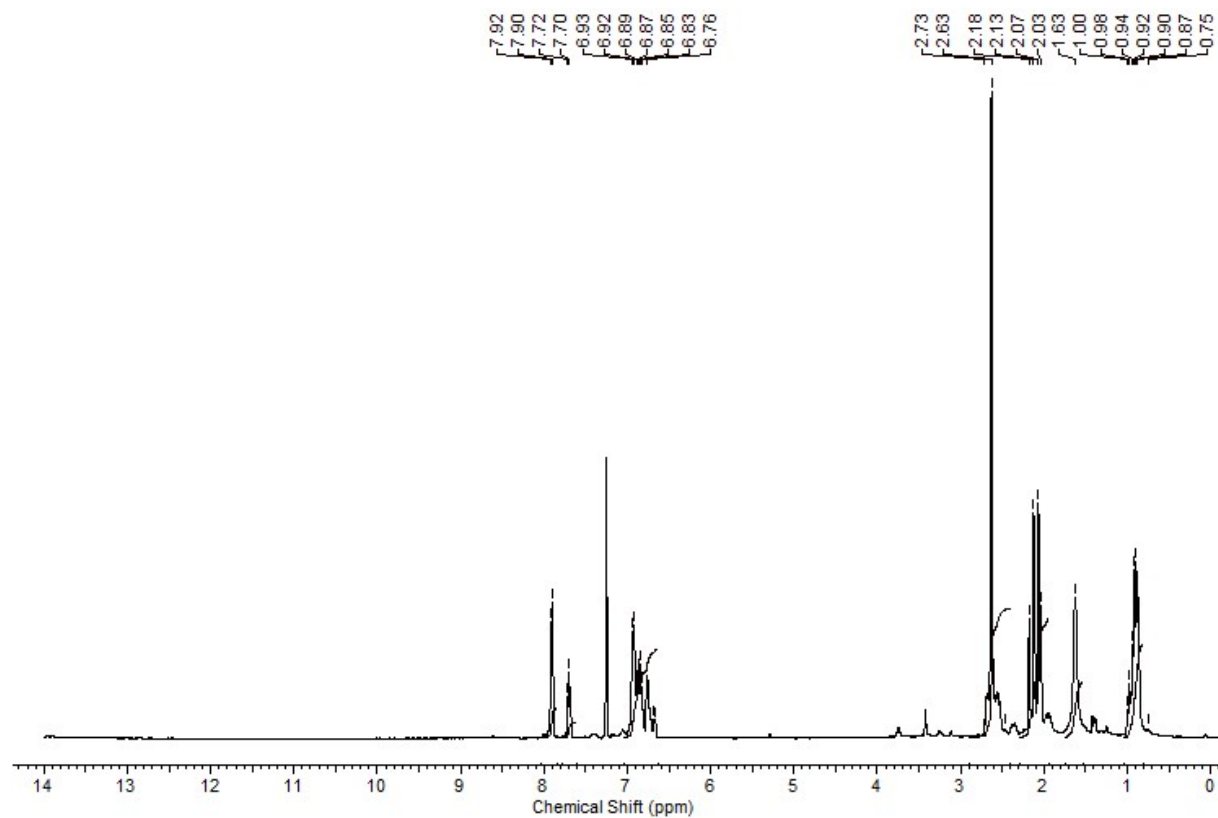


Figure-S2. ¹H-NMR spectra of **2**

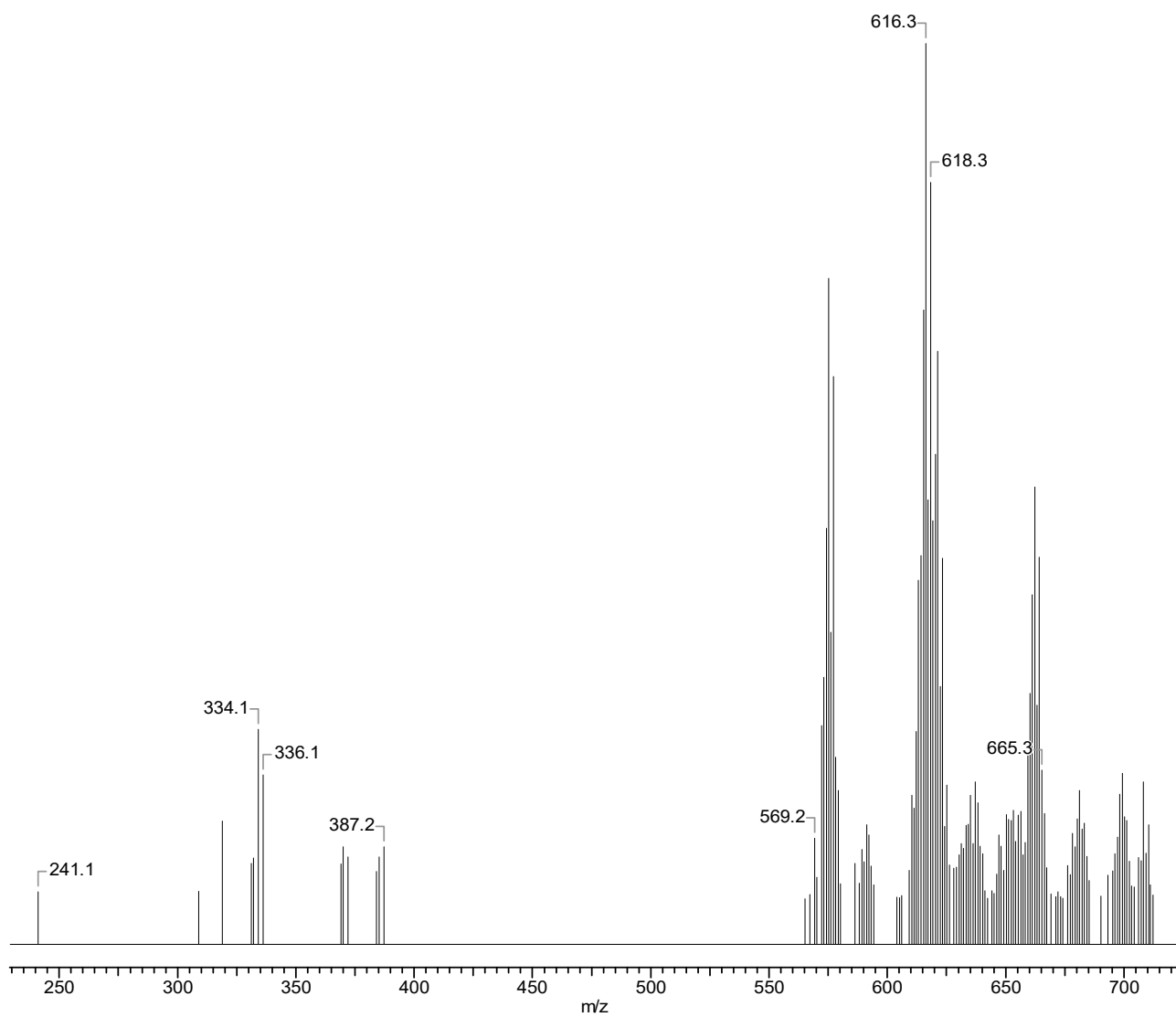


Figure-S3. ESI-MS spectra of **2**

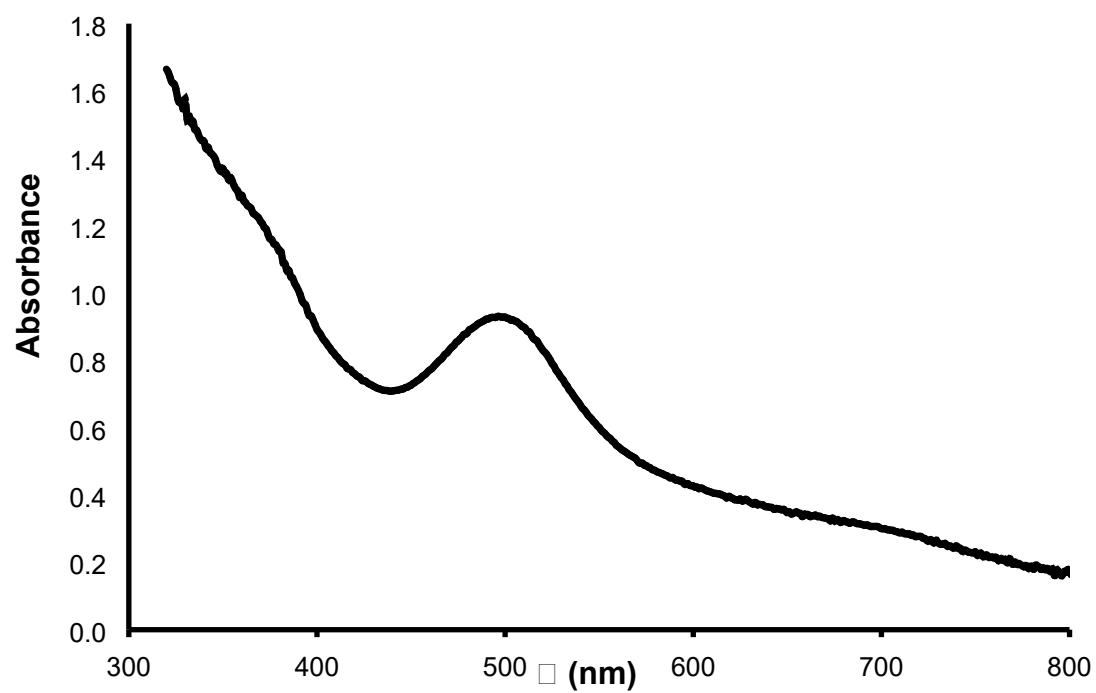


Figure-S4. UV-Visible spectrum of 2

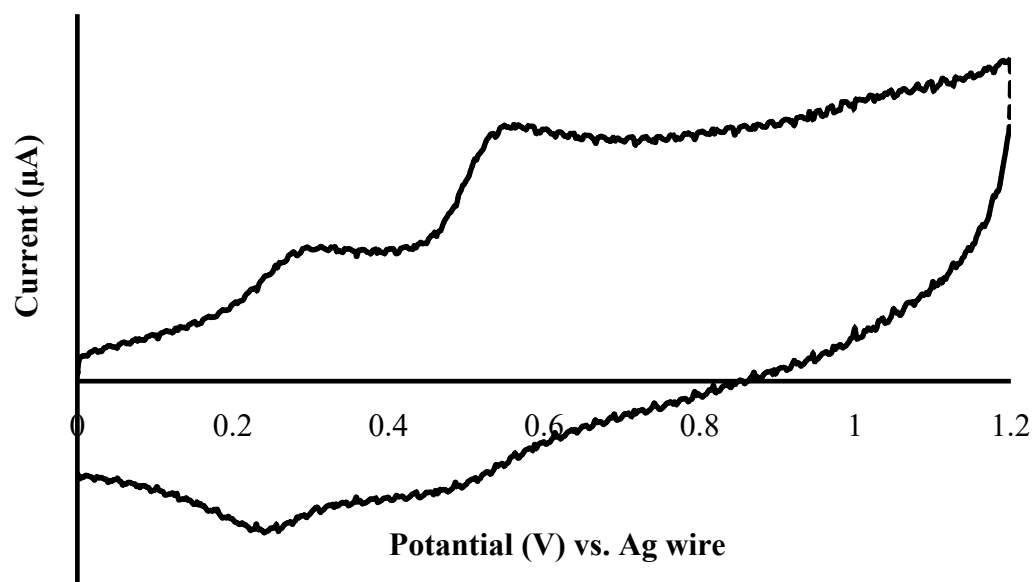


Figure-S5. CV voltammogram of 2

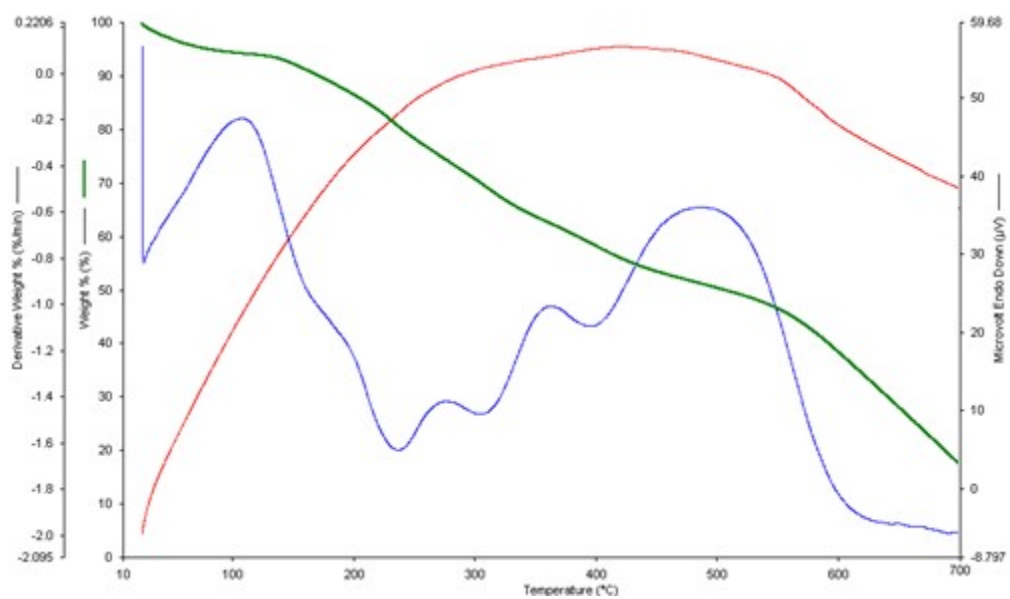
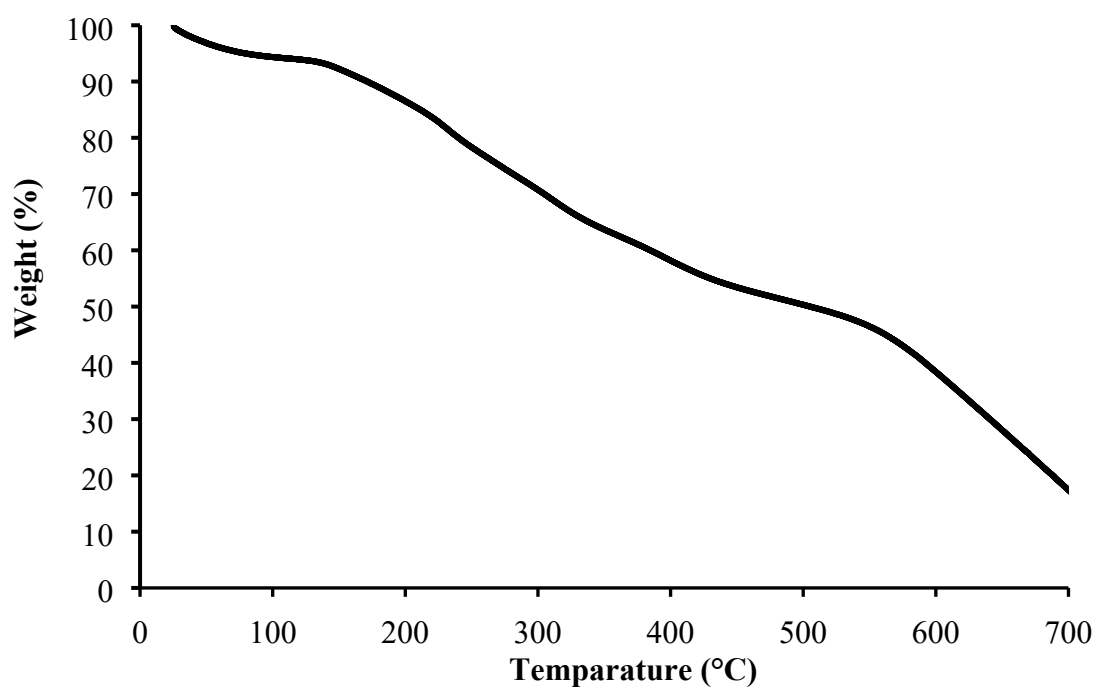


Figure-S6. TG curve of 2

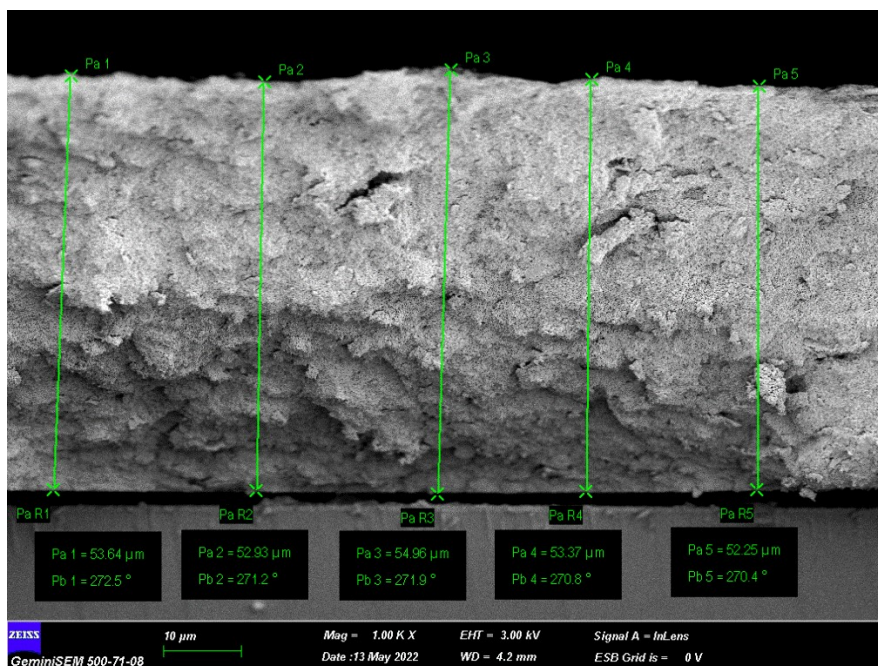
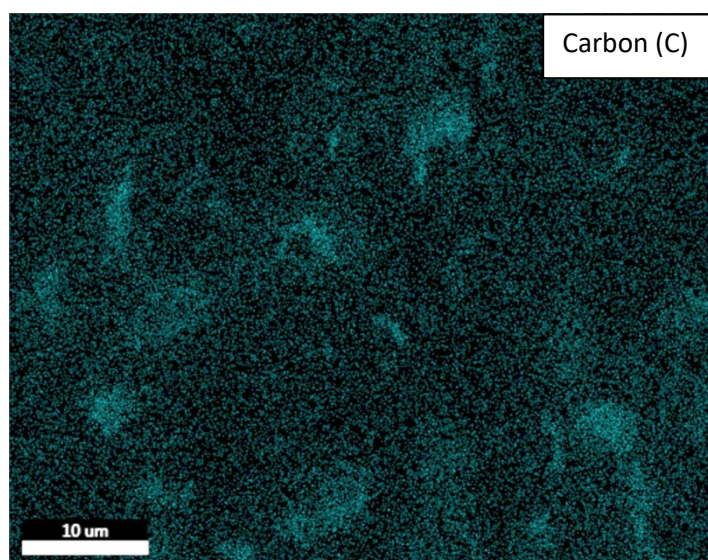


Figure-S7. The cross-sectional analysis of the Ru(II)-RGO-TiO₂@FTO working electrode



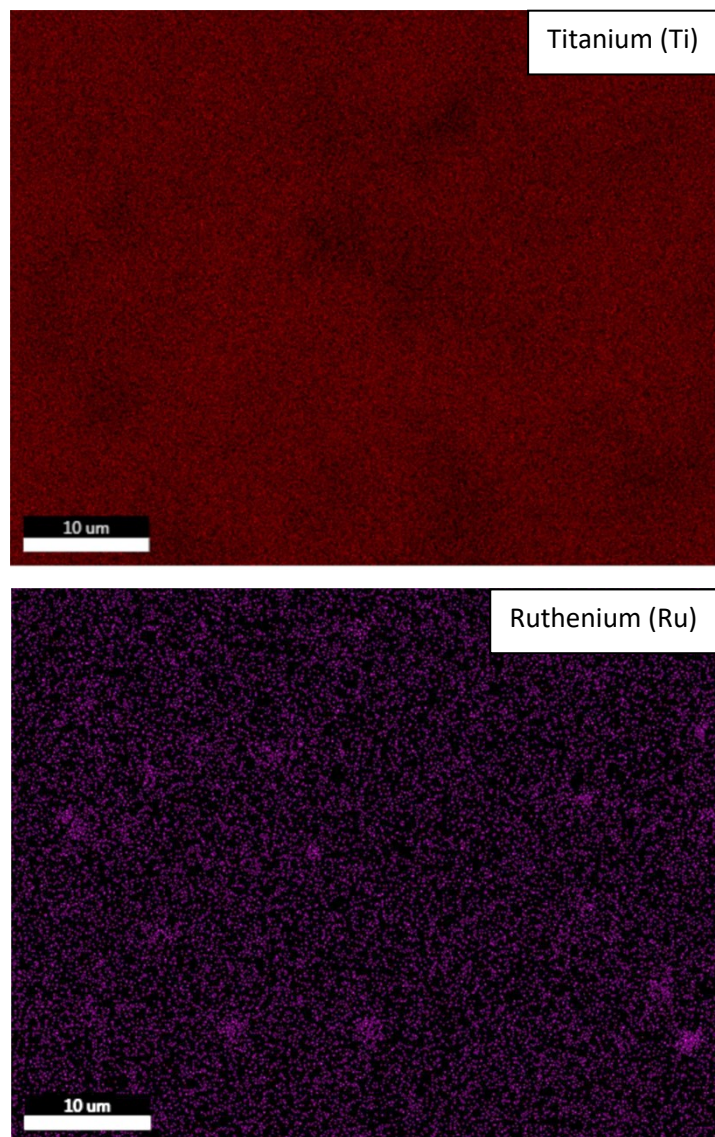


Figure-S8. The SEM-EDX mapping analysis of the Ru(II)-RGO-TiO₂@FTO working electrode