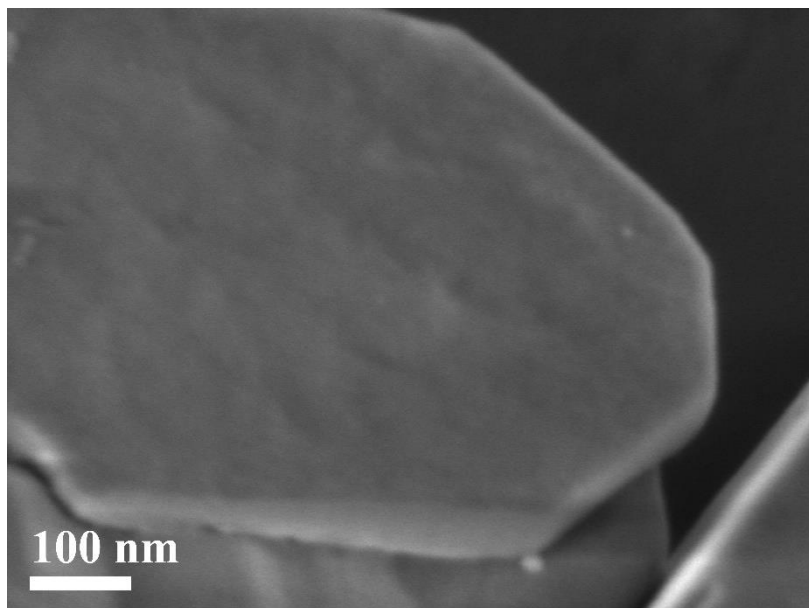


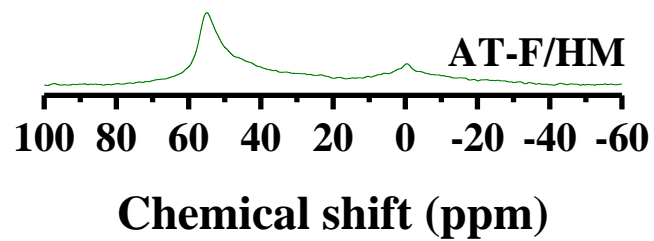
## Supporting information

### **Mesopore Engineering in Al-Rich Mordenite Zeolites by Tandem Top-down Protocol: A Comparative Study between Fluoride Leaching and Fluorination**

Ning Wei,<sup>a,b,c</sup> Lulu Xu,<sup>a</sup> Huimin Gong,<sup>b</sup> Weiping Zhang,<sup>a,\*</sup> Dazhi Zhang<sup>b</sup> and Shengjun Huang<sup>b,\*</sup>



**Figure S1.** FESEM image of AT-HM sample



**Figure S2.**  $^{27}\text{Al}$  MAS NMR spectra of AT-F/HM sample