

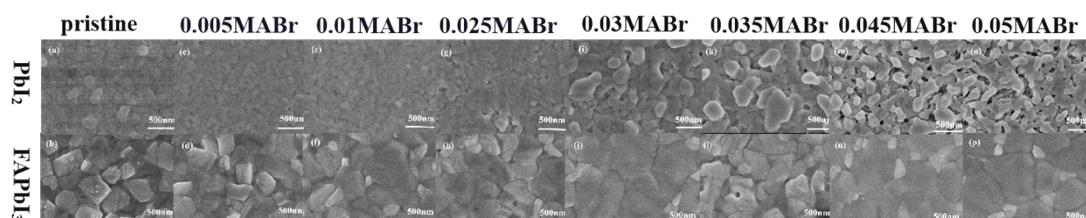
Supplementary information

Inhibition PbI_2 -induced defects by doping MABr for high-performance perovskite solar cells

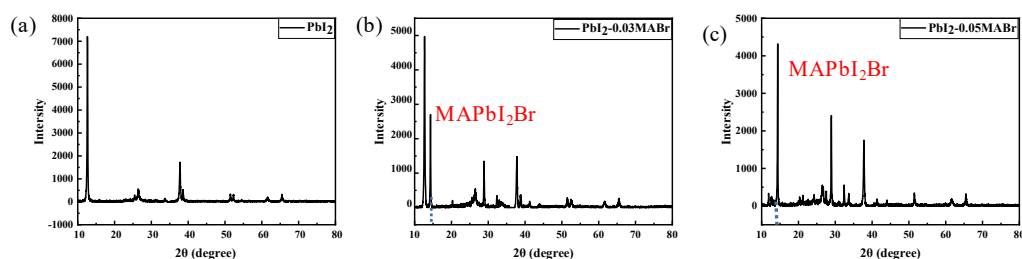
Yao Yao¹, Mingliang Wang¹, Qingrui Cai¹, Dong Wei^{1*}

¹College of Physics and energy, Fujian Normal University, FuZhou, China

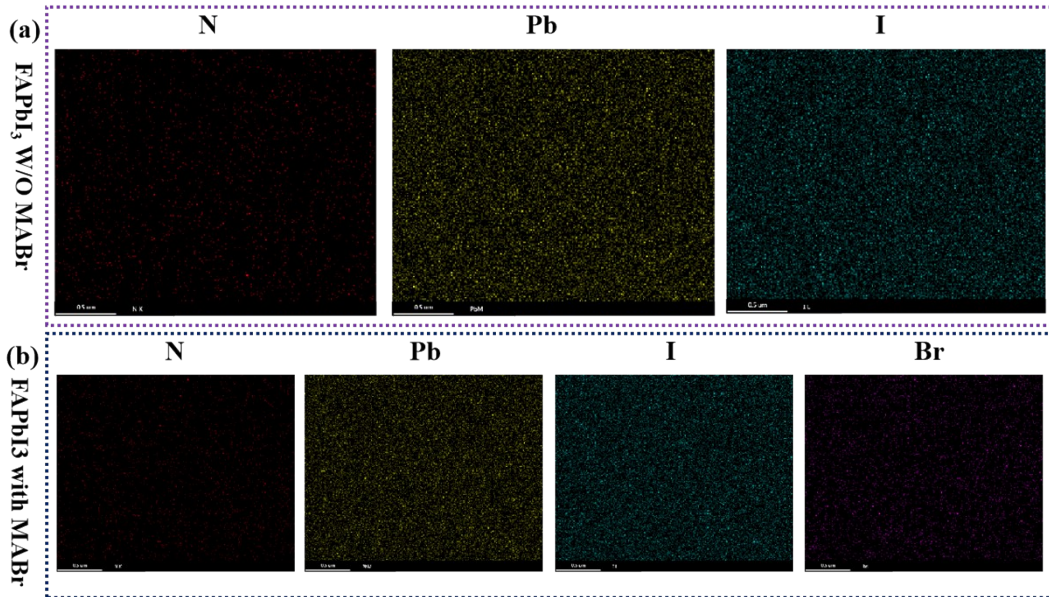
*Email of corresponding author: q397983012@126.com



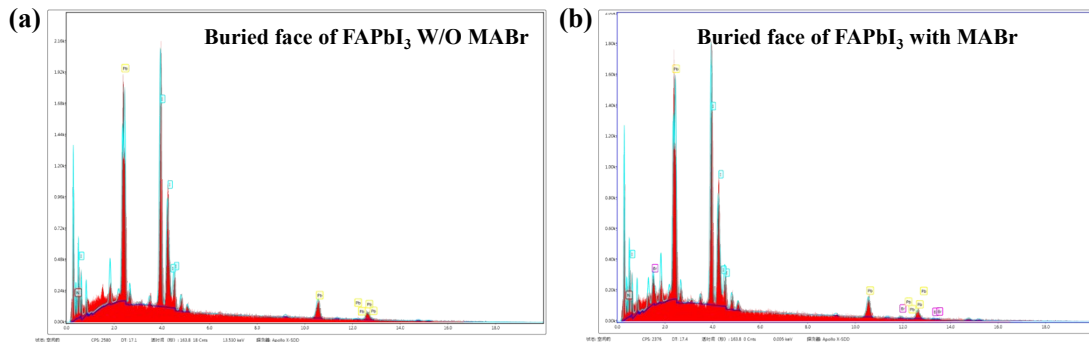
Supplementary Fig. 1. (a), (c), (e), (g), (i), (k), (m), (o) shows the SEM images of PbI_2 with MABr = 0, 0.005, 0.01, 0.025, 0.03, 0.035, 0.045, 0.05; whereas Fig. 1 (b), (d), (f), (h), (j), (l), (n), (p) shows the SEM images of corresponding FAPbI_3 .



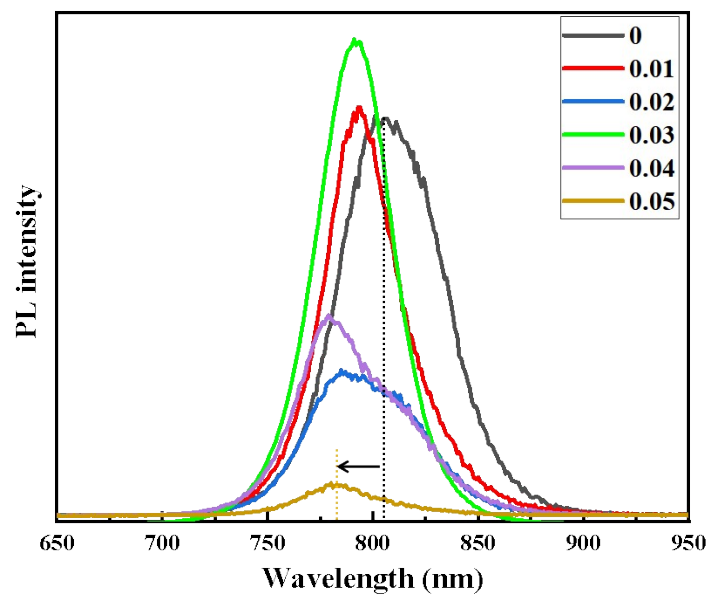
Supplementary Fig. 2. XRD patterns of (a) PbI_2 ; (b) PbI_2 -0.03MABr; (c) PbI_2 -0.05MABr.



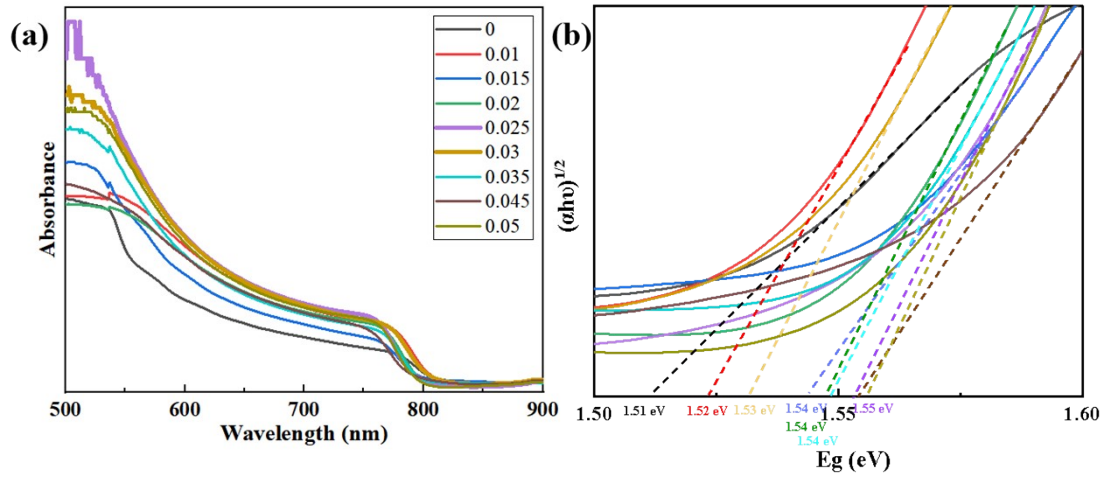
Supplementary Fig. 3. The elements distribution diagram of the FAPbI₃ buried face without MABr (a) and with MABr (b).



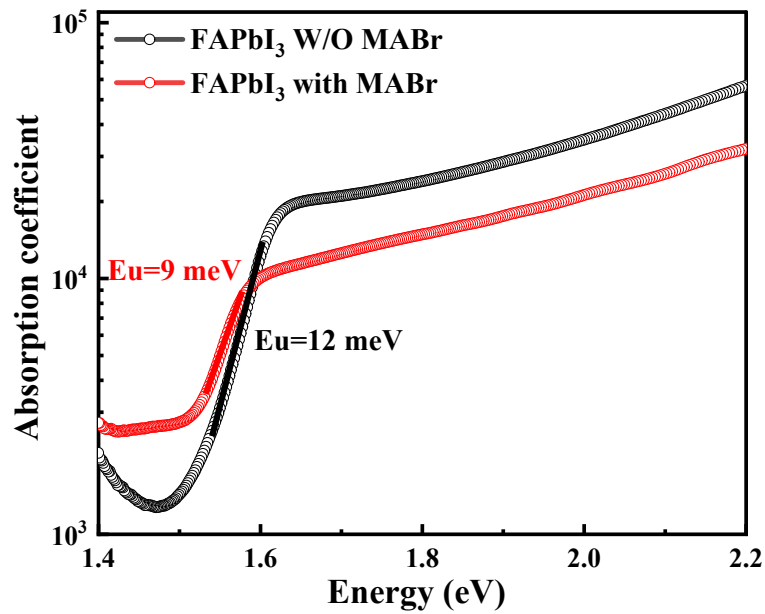
Supplementary Fig. 4. The full elements distribution spectrum of the buried face of FAPbI₃ (a) without and (b) with MABr.



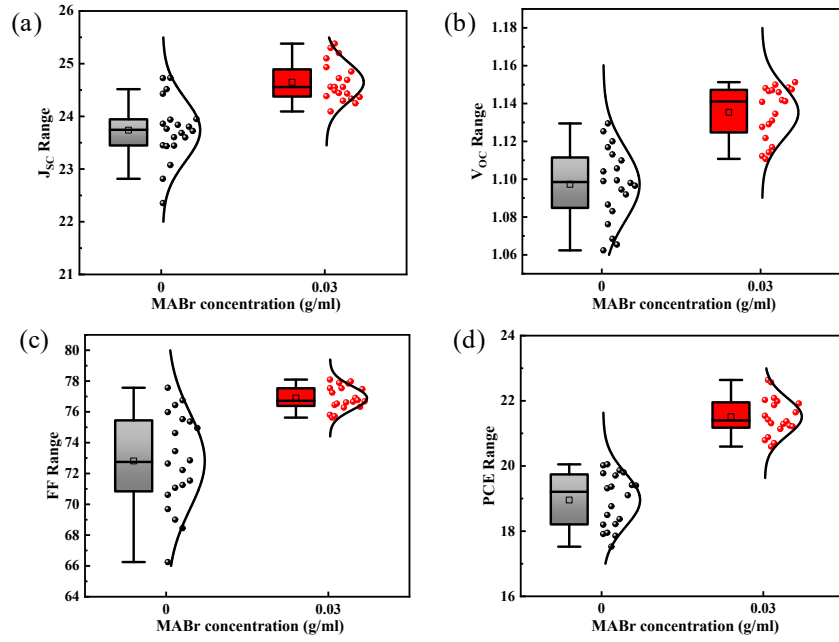
Supplementary Fig. 5. PL spectrum for FAPbI₃ samples with MABr from 0 to 0.05 g/ml.



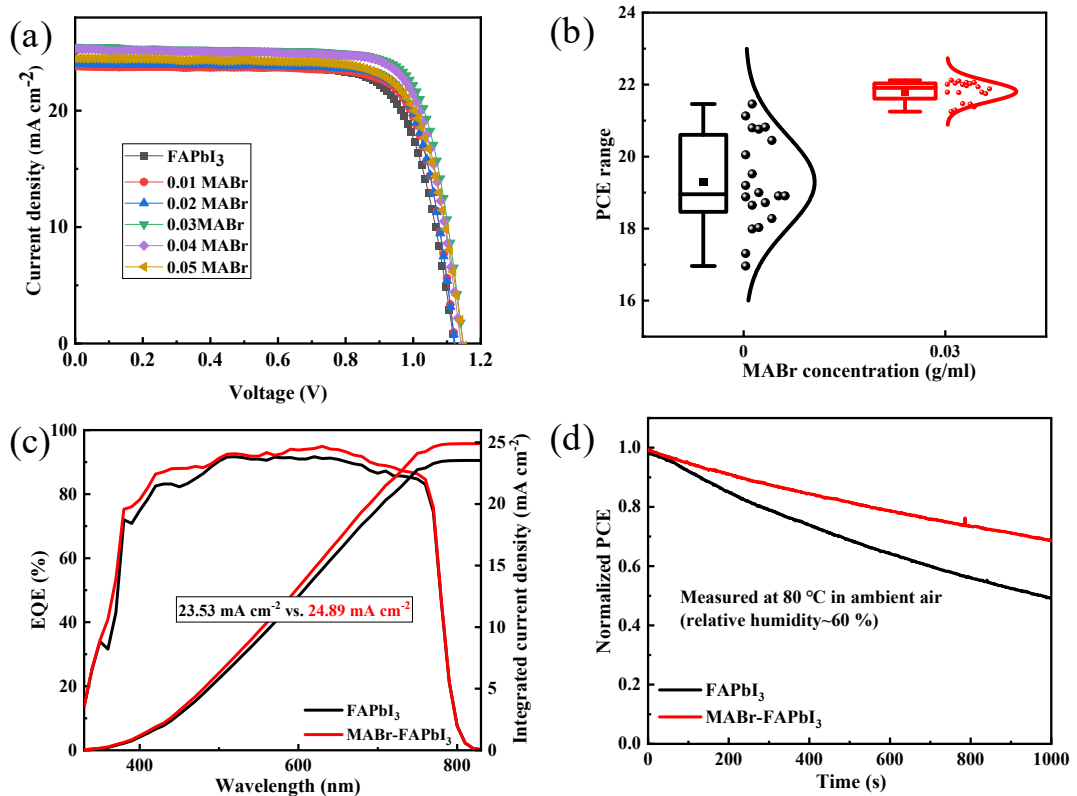
Supplementary Fig. 6. (a) Absorption spectra of as-prepared films with increasing MABr from 0 to 0.05g/ml; (b) the band gaps of these corresponding films.



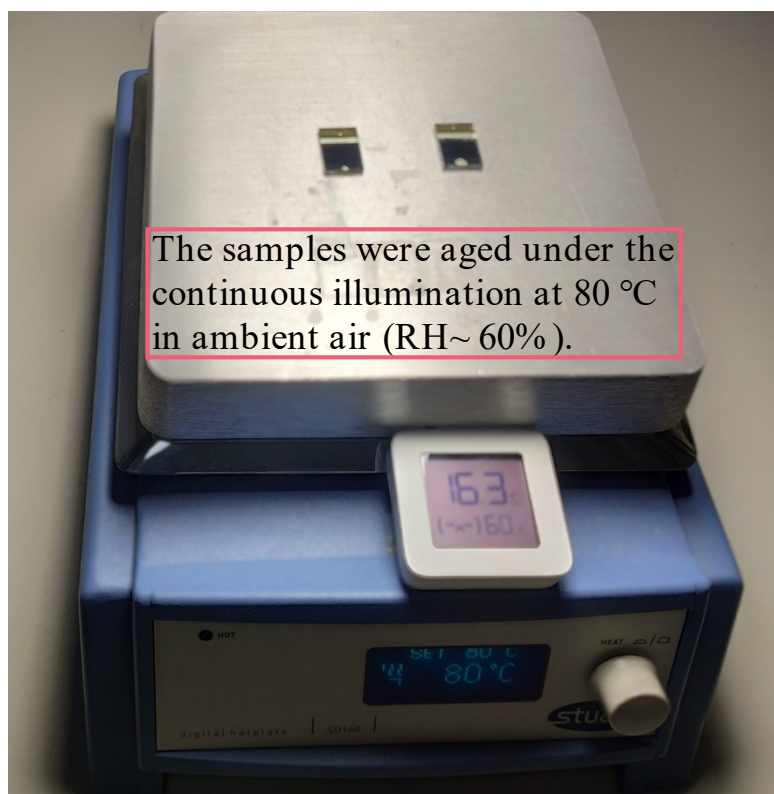
Supplementary Fig. 7. The Urbach tail energy from the Tauc plot of FAPbI₃ without (Black line) and with (Red line) MABr.



Supplementary Fig. 8. Statistical plot of FAPbI₃ with MABr = 0, 0.03g/ml: (a) J_{sc} ; (b) V_{oc} ; (c) FF ; (d) PCE.



Supplementary Fig. 9. (a) Current-Voltage curves of FAPbI₃ under different doping concentration of MABr = 0, 0.01, 0.02, 0.03, 0.04, 0.05g/ml; (b) statistical plot of FAPbI₃ with MABr = 0, 0.03g/ml; (c) IPCE spectra obtained for the devices with and without MABr; (d) the device performance test at 80 °C in ambient air (relative humidity of 60) for 1000 seconds.



Supplementary Fig. 10. Stability test at 80 °C in ambient air (relatively humidity of 60 %) for 1000 seconds

Table S1 Performance parameters of PSCs with various MABr concentration.

MABr concentration	J_{SC} (mA cm ⁻²)	V_{OC} (V)	FF (%)	PCE (%)
0	23.95	1.12	74.95	20.05
0.01	23.76	1.12	77.11	20.51
0.02	23.98	1.12	78.58	21.11
0.03	25.30	1.15	77.84	22.64
0.04	25.14	1.14	77.38	22.23
0.05	24.45	1.15	75.01	21.08

Table S2. Fitted EIS parameters for the PSCs based on pristine FAPbI₃ and MABr modified FAPbI₃ ETLS.

ETL	R_s	R_{tr}	C_{tr}	R_{rec}	C_{rec}
FAPbI ₃	9.8	58.28	$1.3 \cdot 10^{-7}$	49.4	$1.1 \cdot 10^{-7}$
MABr-FAPbI ₃	7.1	9.8	$1.1 \cdot 10^{-6}$	58.3	$2.4 \cdot 10^{-7}$

