

Electronic Supplementary Information

of

Evaluation of intracellular distribution of folate functionalized silica nanoparticles using fluorescence and hyperspectral enhanced dark field microscopy

Luminita Claudia Miclea^a, Mona Mihailescu^{*,b}, Nicolae Tarba^c, Ana-Maria Brezoiu^d, Ana Maria Sandu^e, Raul-Augustin Mitran^f, Daniela Berger^d, Cristian Matei^d, Mihaela Georgeta Moisescu^{*,a}, Tudor Savopol^a

^a*Biophysics and Cellular Biotechnology Department, Excellence Center for Research in Biophysics and Cellular Biotechnology, Faculty of Medicine, University of Medicine and Pharmacy Carol Davila, 8 Eroii Sanitari Blvd., Bucharest, 050474, Romania*

^b*Digital Holography Imaging and Processing Laboratory, Fundamental Sciences Applied in Engineering Research Center, Faculty of Applied Sciences, University "Politehnica" of Bucharest, 313 Splaiul Independentei, Bucharest, 060042, Romania*^c*Physics Department, Faculty of Applied Sciences, Doctoral School of Automatic Control and Computers, University "Politehnica" of Bucharest, 313 Splaiul Independentei, Bucharest, 060042, Romania*

^d*Department of Inorganic Chemistry, Physical-Chemistry & Electrochemistry, Faculty of Chemical Engineering and Biotechnologies, University "Politehnica" of Bucharest, 1-7 Polizu st., 11061, Bucharest, Romania*

^e*CAMPUS Research Center, University "Politehnica" of Bucharest, 313 Splaiul Independentei, Bucharest, 060042, Romania*

^f*"Ilie Murgulescu" Institute of Physical-Chemistry, Romanian Academy, 202 Splaiul Independentei, Bucharest, 060021, Romania*

* *Mihaela Georgeta Moisescu (mihaela.moisescu@umfcd.ro), and Mona Mihailescu (mona.mihailescu@upb.ro) are equally sharing the corresponding author position. Refer to Mihaela Georgeta Moisescu for biology-related items and Mona Mihailescu for microscopy and software items.*

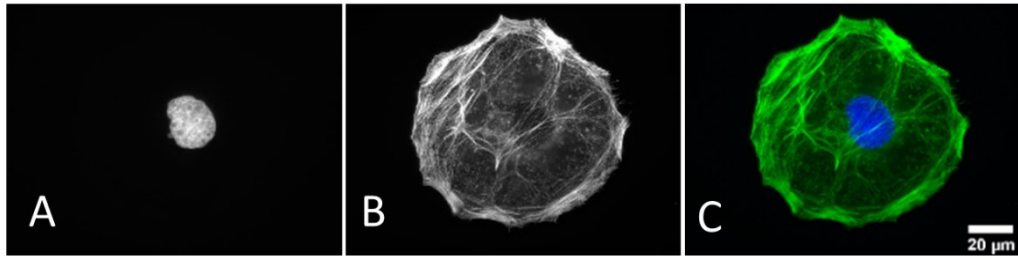


Fig. S1 Example of fluorescence images of control Caco-2 cell (slices extracted from Z-stack), for nucleus (A) and cytoskeletal actin (B). Images were acquired using enhanced dark field microscopy (ob. 60× with immersion). Cells were double stained with DAPI for the nucleus (digitally colored in blue) and with Alexa Fluor™ 488 Phalloidin for cytoskeletal actin (digitally colored in green). The image resulting from superposing the digitally colored images was obtained using ImageJ software (C).

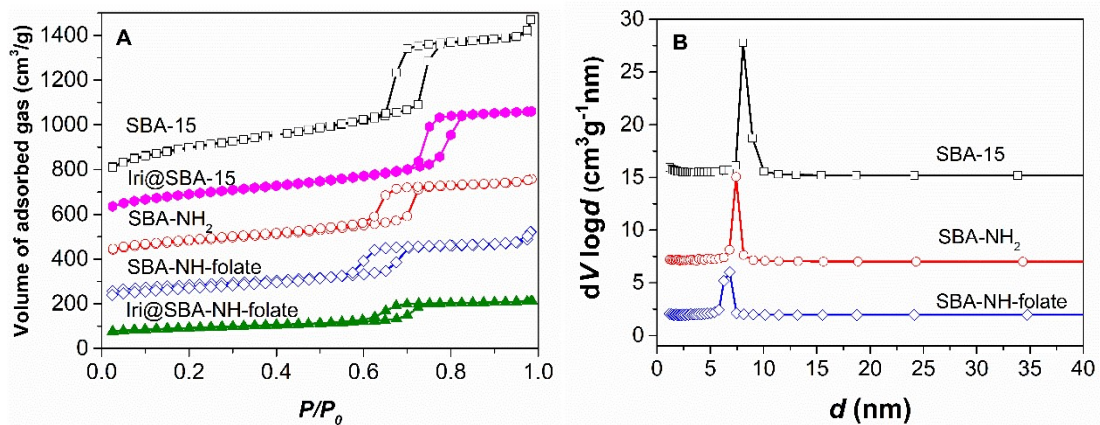


Fig. S2 Nitrogen adsorption-desorption isotherms of SBA-15 and SBA-NH-folate carriers, as well as the corresponding Irinotecan-loaded carrier (A) and the pore size values distribution curves for mesoporous silica-type supports (B).

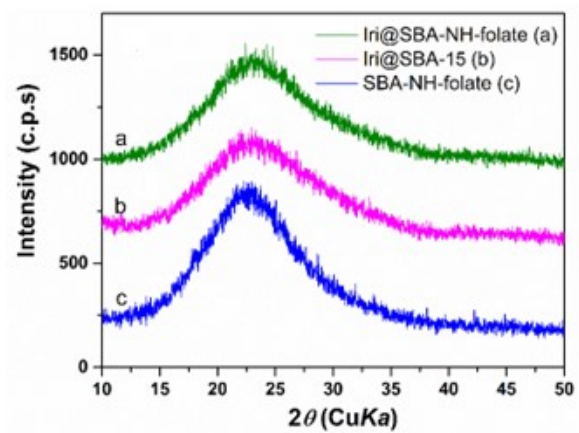


Fig. S3 Wide angle X-ray diffraction patterns for Irinotecan-loaded samples and folate-functionalized supports.

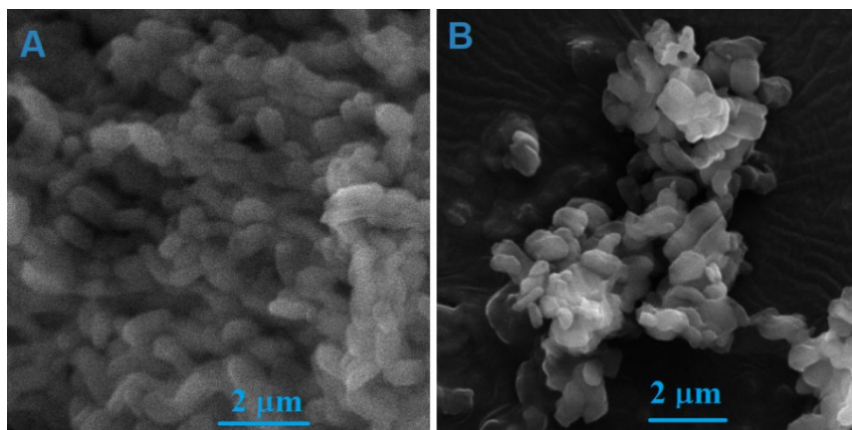


Fig. S4 SEM images for mesoporous silica particles of SBA-15 (A) and SBA-NH-folate (B).

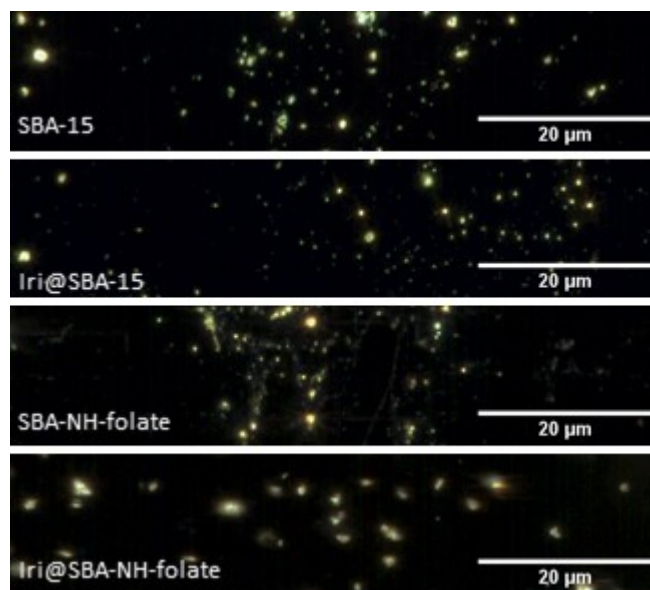


Fig. S5 Hyperspectral images of nanoparticles suspended in buffered saline solution. Nanoparticles appear as bright dots on a dark background (objective 60× with immersion).