

Quantification of the P=O···HN hydrogen bond in the binding of creatinine with phosphonate calix[4]pyrroles.

Andrés F. Sierra,¹ Gemma Aragay,¹ Rosa M. Gomila,² and Pablo Ballester.^{1,3}

¹Institute of Chemical Research of Catalonia (ICIQ), The Barcelona Institute of Science and Technology, Avda. Països Catalans 16, 43007 Tarragona (Spain).

² Departament de Química, Universitat de les Illes Balears, Crta de Valldemossa km 7.5, 07122 Palma de Mallorca (Balears), (Spain).

³ICREA, Passeig Lluís Companys 23, 08018 Barcelona (Spain).

Contents

General methods and instrumentation	S3
Synthesis and characterization data	S3
¹ H and ³¹ P NMR titration experiments	S4
3ii vs 2b	S5
3io vs 2b	S6
3oo vs 2b	S7
1i vs 2b	S8
4 vs 2b	S9
ITC Experiments.....	S10
3ii vs 2b	S10
3io vs 2b	S11
3oo vs 2b	S12
1i vs 2b	S13
4 vs 2b	S14
Estimation of hydrogen bond interaction energy.....	S15
Computed energy minimized structures	S16
Cartesian coordinates of the full optimized structures for the free receptors and the corresponding inclusion complexes with 2b	S18
Computed thermodynamic parameters of complexes 2b ⊂ 3io and 2b ⊂ 3oo	S54
References.....	S55

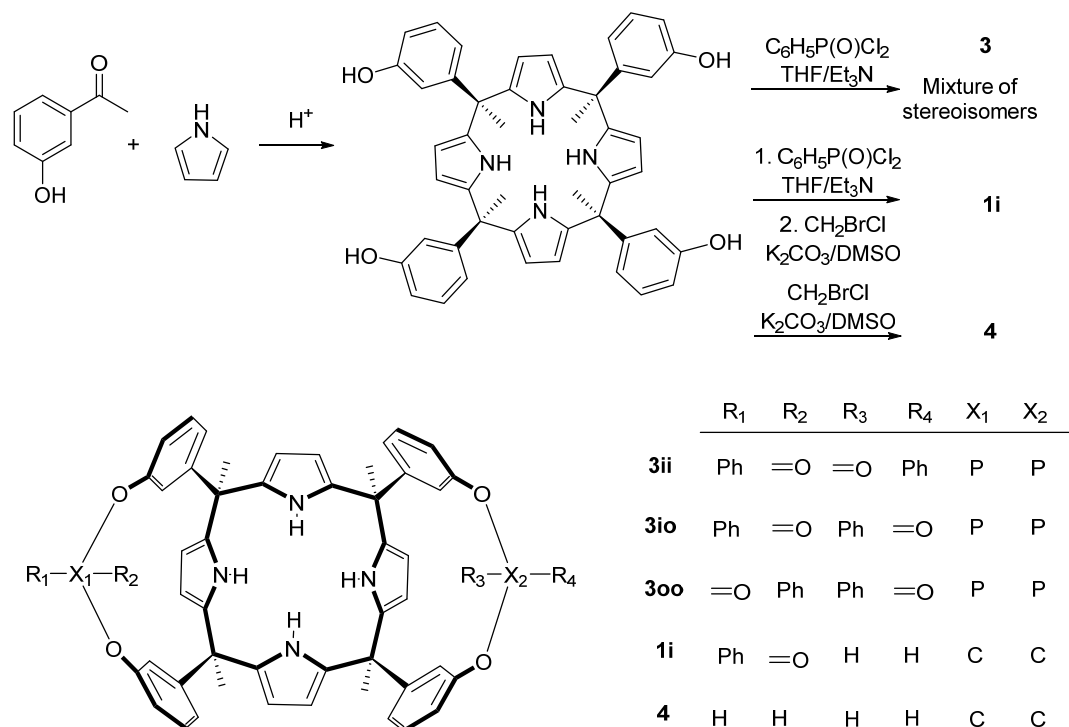
General methods and instrumentation

Reagents and solvents used in the synthesis were obtained from commercial suppliers and were used without further purification unless otherwise stated. Pyrrole was distilled under vacuum and freshly used. THF and triethylamine (Et₃N) were dried and distilled from sodium and CaH₂, respectively, under argon atmosphere and freshly used. Flash column chromatography was performed with silica gel, technical grade, pore size 60 Å, and 230–400 mesh particle size. Automatic column chromatography purifications were done with a Combi-flash® RF+ Routine. ¹H, ³¹P and ¹³C NMR spectra were recorded on a Bruker Avance 400 (400 MHz for ¹H-NMR), Bruker Avance 500 (500 MHz for ¹H-NMR) ultra-shield spectrometer. Deuterated solvents were purchased from Aldrich.

Crystal structure determination was carried out using a Rigaku MicroMax-007HF diffractometer equipped with a PILATUS 200K detector and a Bruker Apex II Duo equipped with an APEX II detector, both using Mo K α radiation. Crystal structure solution was achieved using VLD and Patterson methods as implemented in SIR2014 v14.10. Least-squares refinement on F² using all measured intensities was carried out using the program SHELX-2018/3.

Synthesis and characterization data

Cavitands were synthesized by following the published protocols.^{1,2} Hexylcreatinine (**2b**) was also prepared using a known protocol.³



Scheme S1 Reaction scheme for the preparation of the receptors **1i**, **3** and **4**.

¹H and ³¹P NMR titration experiments.

We prepared a stock solution for each receptor (~ 2.0 mM) in CD₂Cl₂. A stock solution of **2b** (~ 12 mM) was prepared in methanol (HPLC grade) due to solubility issues. We placed different amounts of the solution of **2b** in small vials using high-precision Hamilton Glass microsyringes (33 μL for 0.5 equiv., 66 μL for 1 equiv., and 170 μL for 2.5 equiv.). The methanol was removed under reduced pressure and the residual solid was re-dissolved in 0.4 mL of the stock solution of each receptor. We sonicated the solution for five minutes and transferred it to an NMR tube to acquire the corresponding spectra.

3ii vs 2b

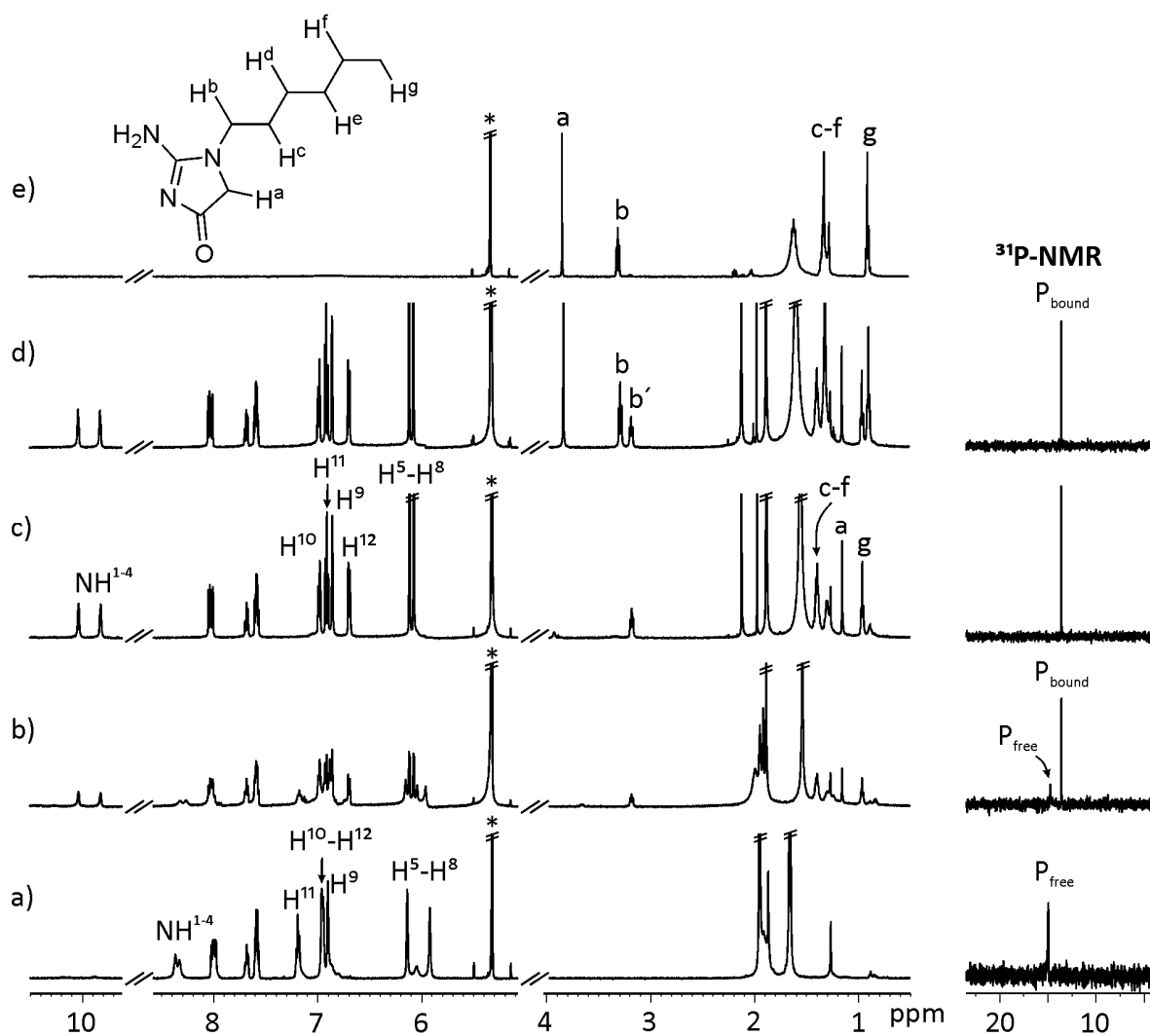


Figure S1 Selected regions of the ^1H NMR spectra (500 MHz, 298 K) (left panel) and the corresponding ^{31}P NMR spectra (202 MHz, 298 K) (right panel) of CD_2Cl_2 solutions containing receptor **3ii** and **2b** in different molar ratios: a) Free **3ii**; b) **3ii** + 0.5 equiv. of **2b**; c) **3ii** + 1.0 equiv. of **2b**; d) **3ii** + 2.5 equiv. of **2b**. Trace e) shows the same regions of the ^1H NMR spectrum of **2b**. * Residual solvent peak

3io vs 2b

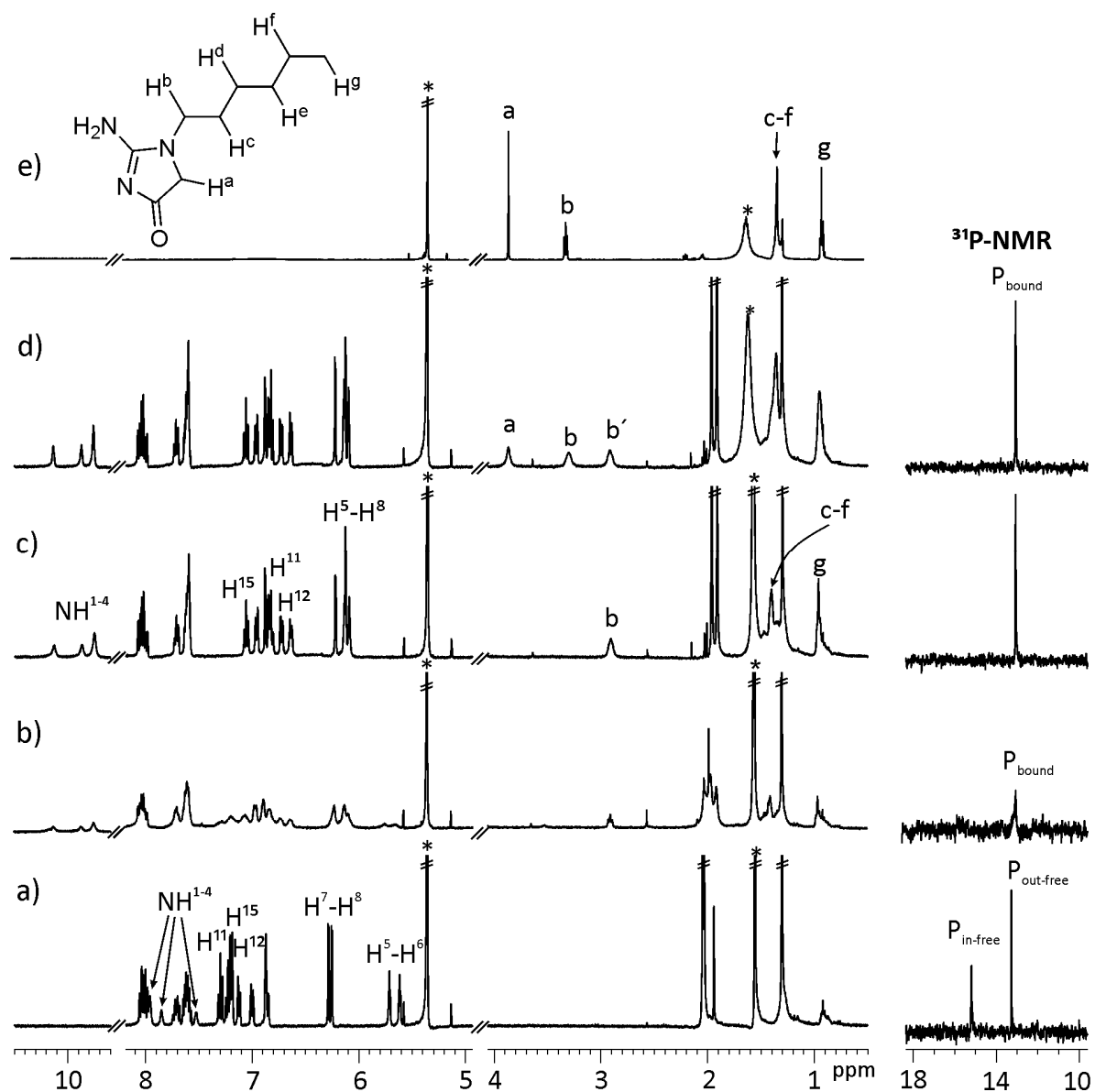


Figure S2 Selected regions of the ^1H NMR spectra (500 MHz, 298 K) (left panel) and the corresponding ^{31}P NMR spectra (202 MHz, 298 K) (right panel) of CD_2Cl_2 solutions containing receptor **3io** and **2b** in different molar ratios: a) Free **3io**; b) **3io** + 0.5 equiv. of **2b**; c) **3io** + 1.0 equiv. of **2b**; d) **3io** + 2.5 equiv. of **2b**. Trace e) shows the same regions of the ^1H NMR spectrum of **2b**. * Residual solvent peak

300 vs 2b

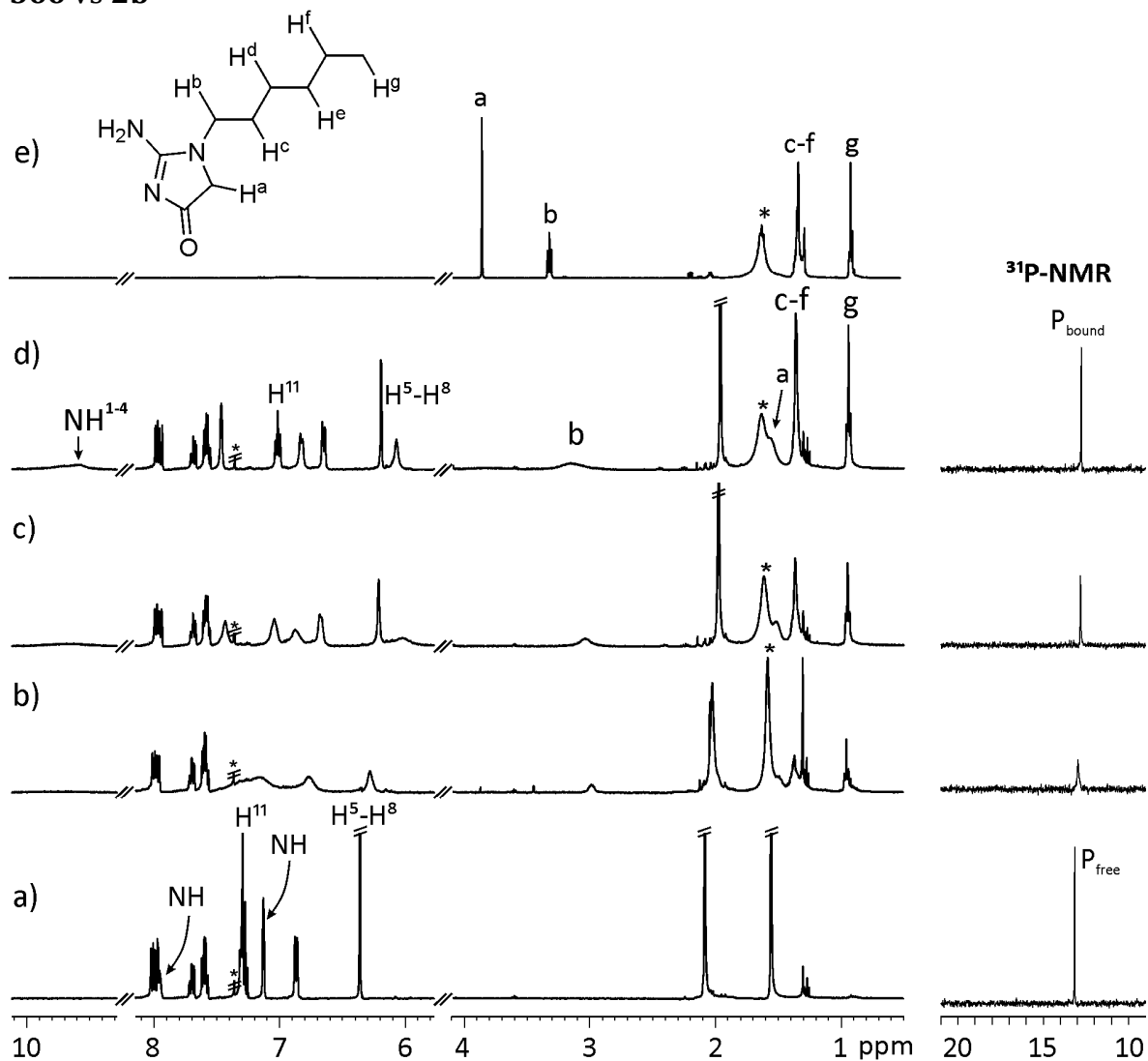


Figure S 3. Selected regions of the ¹H NMR spectra (500 MHz, 298 K) (left panel) and the corresponding ³¹P NMR spectra (202 MHz, 298 K) (right panel) of CD₂Cl₂ solutions containing receptor **300** and **2b** in different molar ratios: a) Free **300**; b) **300** + 0.5 equiv. of **2b**; c) **300** + 1.0 equiv. of **2b**; d) **300** + 2.5 equiv. of **2b**. Trace e) shows the same regions of the ¹H NMR spectrum of **2b**. * Residual solvent peak.

1i vs 2b

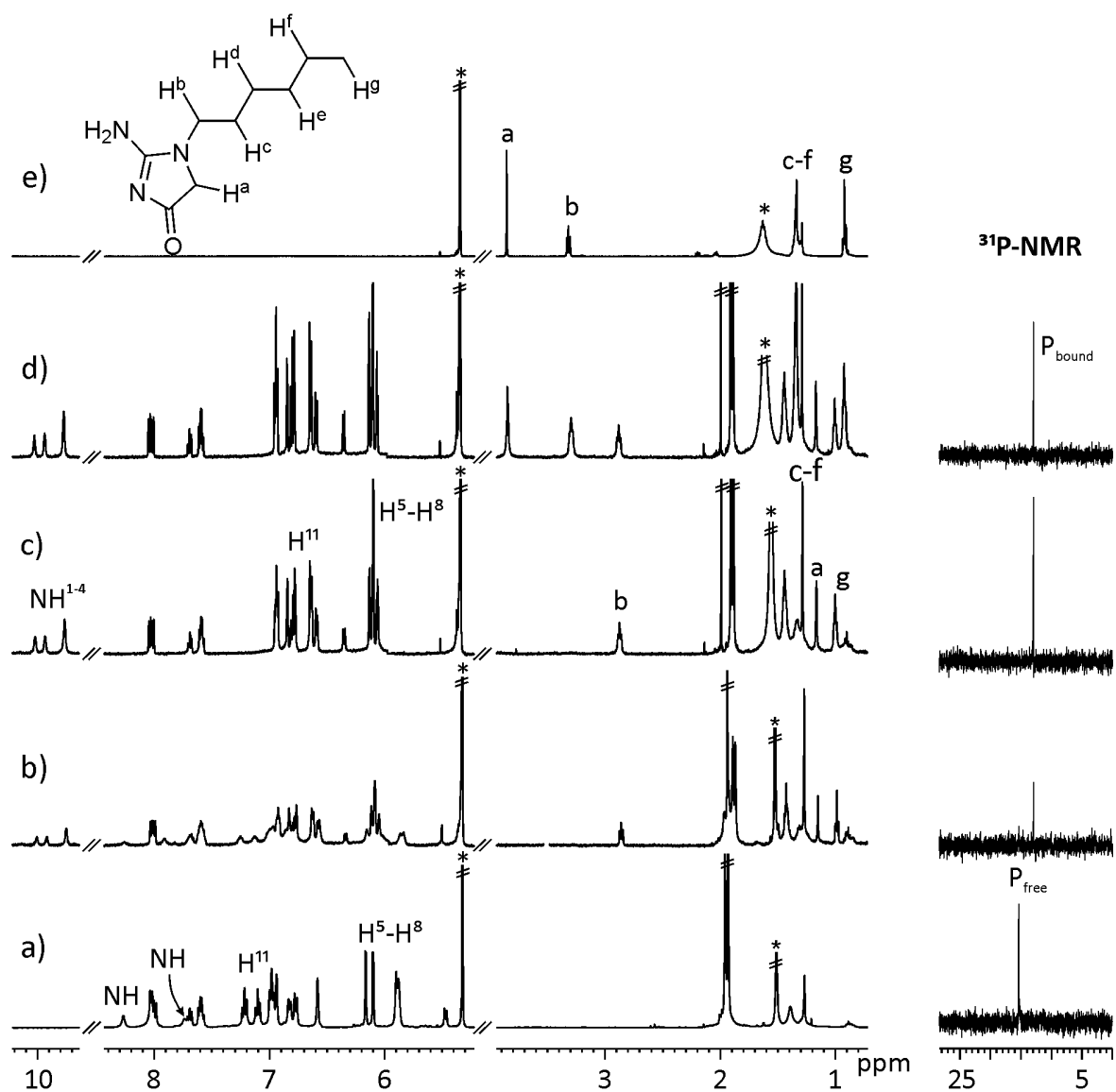


Figure S4 Selected regions of the ¹H NMR spectra (500 MHz, 298 K) (left panel) and the corresponding ³¹P NMR spectra (202 MHz, 298 K) (right panel) of CD₂Cl₂ solutions containing receptor **1i** and **2b** in different molar ratios: a) Free **1i**; b) **1i** + 0.5 equiv. of **2b**; c) **1i** + 1.0 equiv. of **2b**; d) **1i** + 2.5 equiv. of **2b**. Trace e) shows the same regions of the ¹H NMR spectrum of **2b**. * Residual solvent peak.

4 vs 2b

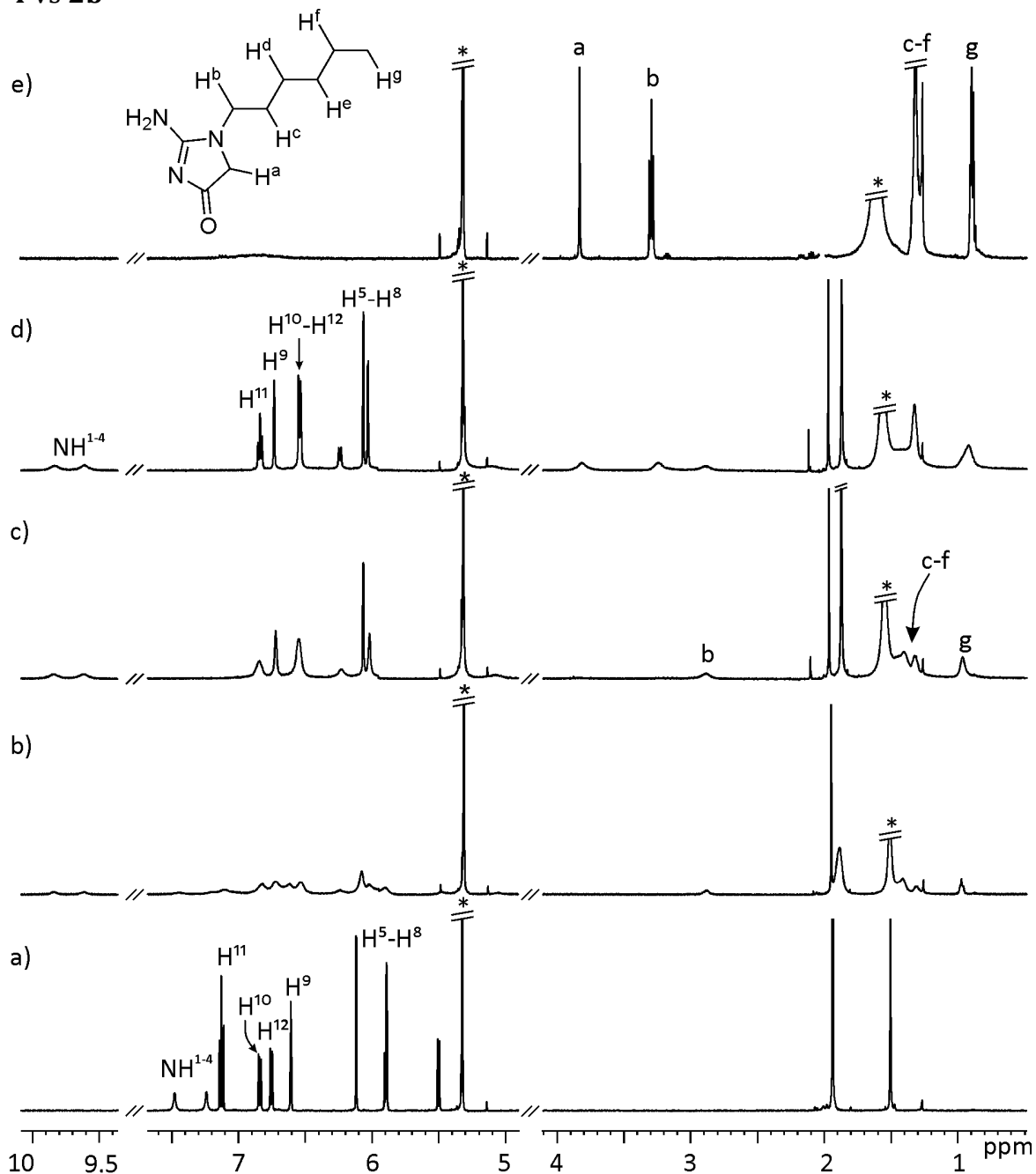


Figure S5 Selected regions of the ¹H NMR spectra (500 MHz, 298 K) of CD₂Cl₂ solutions containing receptor **4** and **2b** in different molar ratios: a) Free **4**; b) **4** + 0.5 equiv. of **2b**; c) **4** + 1.0 equiv. of **2b**; d) **4** + 2.5 equiv. of **2b**. Trace e) shows the same regions of the ¹H NMR spectrum of **2b**. * Residual solvent peak.

ITC Experiments

ITC experiments were performed in a MicroCal VP-ITC Micro Calorimeter with the VP Viewer 2000 software. Due to the low solubility of the hexyl creatinine **2b** in methylene chloride, reverse ITC experiments were performed. The concentration of the solution in the syringe was approximately seven to ten times more concentrated than the cell solution. The association constants and the thermodynamic parameters were obtained from the fit of the titration data to the “one set of sites” binding model implemented in the Microcal ITC Data Analysis module. The enthalpy of binding for each injection is plotted against the molar ratio of guest/host in the cell. The continuous line represents the least-squares-fit of the data to a single-site binding model.

3ii vs 2b

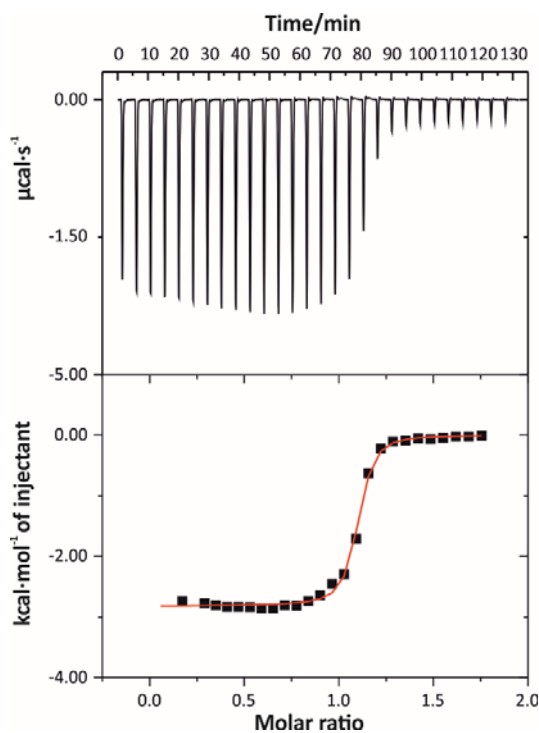


Figure S6 Top) Raw data (heat vs. time) for the titration of **2b** with **3ii** in CH_2Cl_2 . The titration was performed at 288 K. Bottom) Integrated data fitted to a theoretical binding isotherm (red line) for a 1:1 binding model. $[\mathbf{2ii}] = 3.4 \text{ mM}$ over $[\mathbf{2b}] = 0.4 \text{ mM}$.

3io vs 2b

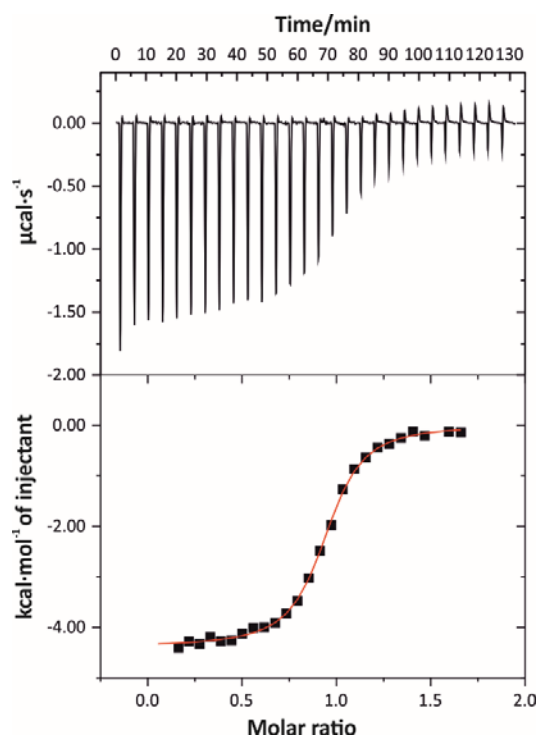


Figure S7 Top) Raw data (heat vs. time) for the titration of **2b** with **3io** in CH_2Cl_2 . The titration was performed at 288 K. Bottom) Integrated data fitted to a theoretical binding isotherm (red line) for a 1:1 binding model. $[\mathbf{2io}] = 0.9 \text{ mM}$ over $[\mathbf{2b}] = 0.1 \text{ mM}$.

300 vs 2b

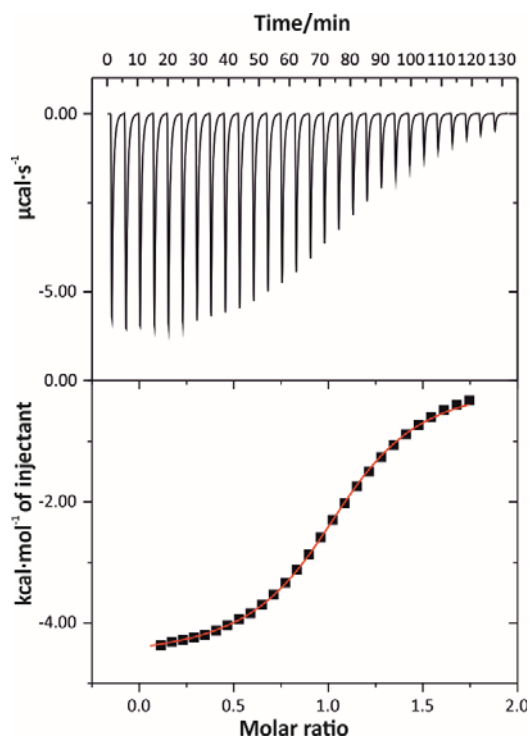


Figure S8 Top) Raw data (heat vs. time) for the titration of **2b** with **300** in CH_2Cl_2 . The titration was performed at 288 K. Bottom) Integrated data fitted to a theoretical binding isotherm (red line) for a 1:1 binding model. $[\mathbf{200}] = 6.5 \text{ mM}$ over $[\mathbf{2b}] = 0.8 \text{ mM}$.

1i vs 2b

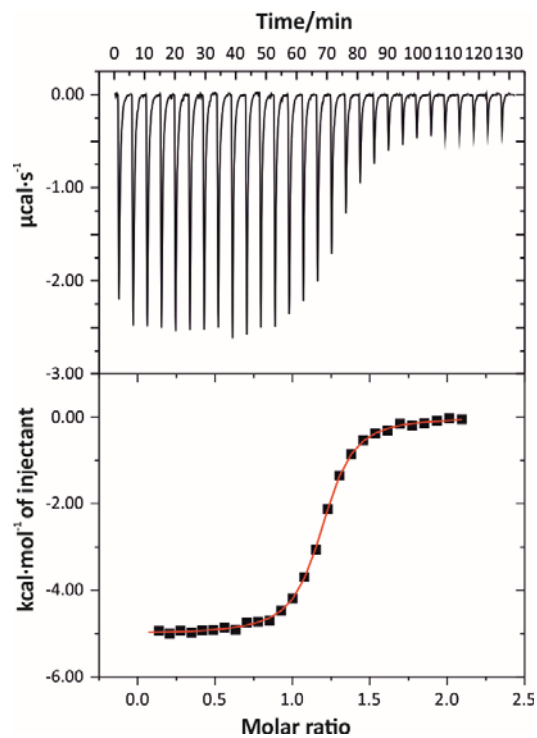


Figure S9 Top) Raw data (heat vs. time) for the titration of **2b** with **1i** in CH_2Cl_2 . The titration was performed at 288 K. Bottom) Integrated data fitted to a theoretical binding isotherm (red line) for a 1:1 binding model. $[\mathbf{1i}] = 2 \text{ mM}$ over $[\mathbf{2b}] = 0.2 \text{ mM}$.

4 vs 2b

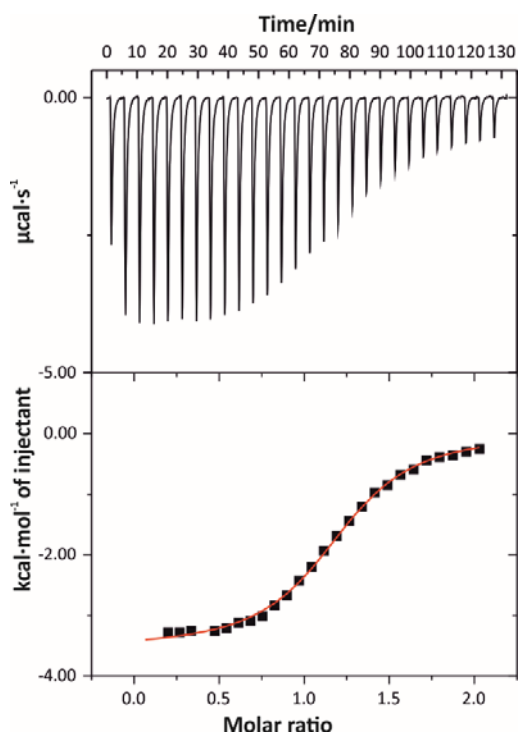


Figure S10 Top) Raw data (heat vs. time) for the titration of **2b** with **4** in CH_2Cl_2 . The titration was performed at 288 K. Bottom) Integrated data fitted to a theoretical binding isotherm (red line) for a 1:1 binding model. $[\mathbf{4}] = 5.0 \text{ mM}$ over $[\mathbf{2b}] = 0.5 \text{ mM}$.

Estimation of hydrogen bond interaction energy

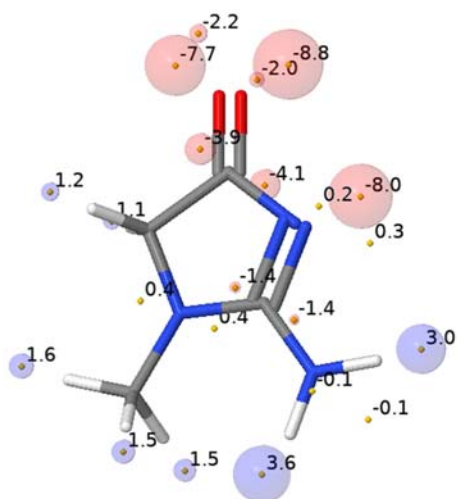


Figure S 11. Surface Site Interaction Point (SSIP) molecular descriptor of creatinine. Blue is used for positive SSIPs and red for negative SSIPs; the size of each sphere represents its magnitude. Image provided by Prof. Christopher A. Hunter, University of Cambridge.

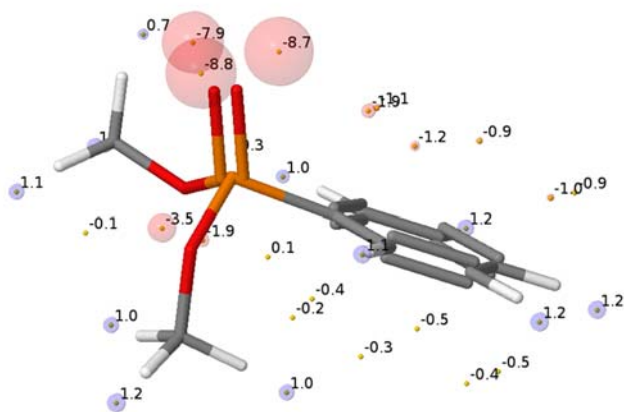


Figure S 12. Surface Site Interaction Point (SSIP) molecular descriptor of dimethylphenylphosphonate. Blue is used for positive SSIPs and red for negative SSIPs; the size of each sphere represents its magnitude. Image provided by Prof. Christopher A. Hunter, University of Cambridge.

Computed energy minimized structures

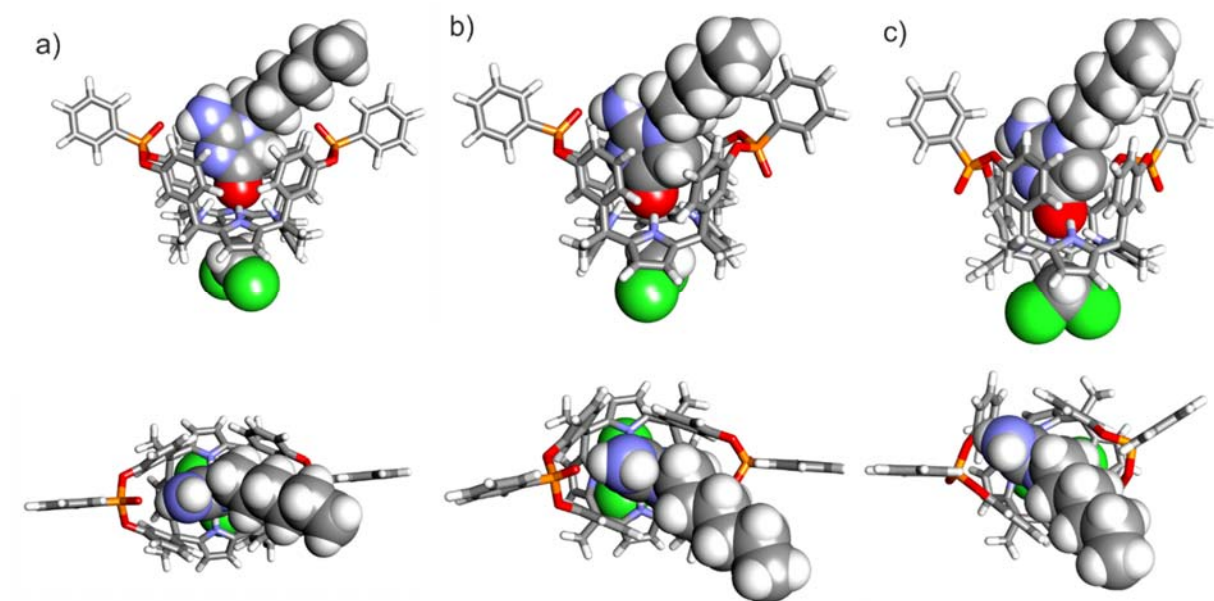


Figure S 13. Side and top views of the energy minimized structures of the **2b-3ii** (a), **2b-3io** (b) and **2b-3oo** (c) inclusion complexes at the RI-BP86-D3BJ-def2-SVP level of theory (solvent COSMO model as implemented in Turbomole version 7.0).

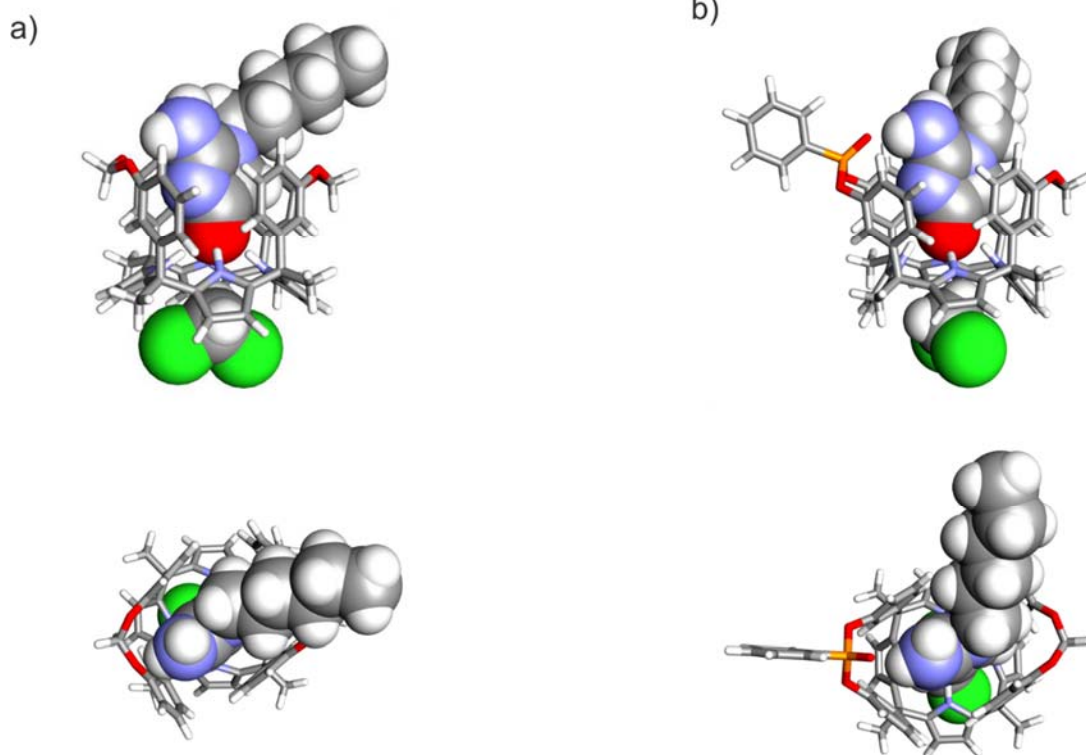


Figure S 14. Side and top views of the energy minimized structures of the **2b-4** (a) and **2b-1i** (b) inclusion complexes at the RI-BP86-D3BJ-def2-SVP level of theory (solvent COSMO model as implemented in Turbomole version 7.0).

Cartesian coordinates of the full optimized structures for the free receptors and the corresponding inclusion complexes with 2b

3ii

Energy = -4627.478111018

C	-4.2653467	0.4784972	3.4474994
C	-4.8779800	-0.3757123	2.4757939
C	-2.9036440	0.5458675	3.1579203
C	-3.8806061	-0.8175956	1.6065147
N	-2.6973358	-0.2228074	2.0186590
C	-1.7741974	1.2565538	3.8874740
C	-1.4150940	2.5737392	3.2180474
C	-3.9765383	-1.7138618	0.3815237
C	-4.0381073	-0.8725686	-0.8813895
C	-0.5212738	3.8767046	1.5687379
N	-2.9560865	-0.1215430	-1.3104247
C	-3.2042698	0.4300002	-2.5563762
C	-5.0205733	-0.7679740	-1.8649426
C	-4.4968922	0.0512214	-2.9172298
C	-2.1727601	1.2705614	-3.2858219
H	-4.7690673	0.9831391	4.2786219
H	-5.9395075	-0.6386942	2.4214546
C	-2.2080726	1.5327939	5.3472121
C	-5.2664849	-2.5643037	0.4860197
H	-6.0070784	-1.2418772	-1.8395077
H	-5.0128794	0.3285164	-3.8421215
C	-0.8651029	0.4816423	-3.5247832
C	-2.7338218	1.6565542	-4.6762145
C	0.0782623	4.1766004	0.2061250
C	-0.9078118	3.8372752	-0.8996460
N	-0.9902355	2.5618886	-1.4409386
C	-1.8976158	2.5344939	-2.4883378
C	-1.8294584	4.6287561	-1.5820244
C	-2.4509409	3.8106492	-2.5804871
C	1.3802477	3.3656729	-0.0150636
C	0.4321298	5.6815764	0.1365803
H	-2.0287317	5.6886795	-1.3904395
H	-3.2192090	4.1254946	-3.2946429
N	-1.0633705	2.6412787	1.8800269
C	-1.1105295	3.8164060	3.7746667
C	-0.5494620	4.6335237	2.7400332
H	-1.2410045	4.0969809	4.8247754
H	-0.1849324	5.6601642	2.8475349
C	-0.5083673	0.3616418	3.9334548

C	0.7794782	0.9311493	3.9126413
C	-0.6235895	-1.0381811	4.0363654
C	1.9258247	0.1229421	3.9405649
C	0.5296571	-1.8333849	4.0611655
C	1.8138064	-1.2733562	3.9972111
H	0.8806938	2.0247113	3.8776050
H	-1.6069364	-1.5243018	4.0993441
H	2.9234188	0.5867067	3.9176673
H	2.6996403	-1.9224098	4.0010763
C	-2.7952308	-2.7065488	0.2738980
C	-2.3856539	-3.1727961	-0.9933128
C	-2.1872890	-3.2521398	1.4215831
C	-1.3784997	-4.1416932	-1.1173633
C	-1.1889624	-4.2288363	1.2831226
C	-0.7615077	-4.6744976	0.0243464
C	0.3106274	1.1764913	-3.8747036
C	-0.8376141	-0.9269796	-3.5131202
C	1.4739060	0.4686255	-4.2042635
C	0.3394871	-1.6252020	-3.8325541
C	1.5094260	-0.9342464	-4.1788178
C	1.9530203	3.3262101	-1.3035312
C	2.0264852	2.6809967	1.0291711
H	-2.8833025	-2.7832991	-1.8926035
H	-2.5032404	-2.9467076	2.4287379
O	-0.6344707	-4.8062255	2.4302962
H	0.0339449	-5.4286541	-0.0472119
H	0.3252291	2.2746506	-3.9186514
H	-1.7539848	-1.4812688	-3.2717558
H	0.3457221	-2.7253630	-3.8162862
H	2.4410948	-1.4612510	-4.4227347
C	3.2044641	1.9548463	0.7911986
C	3.1333816	2.6063246	-1.5252176
C	3.7721899	1.9073851	-0.4880877
H	1.4866583	3.8521496	-2.1489698
H	1.5928085	2.7010792	2.0353249
H	3.6801190	1.4028157	1.6147872
H	4.6829107	1.3316645	-0.6969195
H	-1.3742157	1.9881800	5.9137578
H	-2.4908466	0.5852901	5.8431151
H	-3.0715323	2.2250243	5.3796816
H	-5.2441883	-3.1714443	1.4103684
H	-5.3471459	-3.2434601	-0.3833893
H	-6.1655090	-1.9191728	0.5089734
H	-2.0069055	2.2921130	-5.2156844
H	-3.6848614	2.2146193	-4.5799124
H	-2.9212677	0.7455317	-5.2757508

H	0.8370285	5.9332947	-0.8613875
H	1.1957593	5.9289355	0.8979751
H	-0.4623687	6.3066743	0.3231371
O	2.5872029	1.1936108	-4.6307321
O	3.6906858	2.6589624	-2.8033737
O	0.3715241	-3.2155808	4.1957900
H	-1.0726950	-4.4908151	-2.1148483
H	-1.7706156	-0.5005350	1.6778609
H	-2.0503263	-0.0867610	-0.8339773
H	-0.3005090	1.8250300	-1.2603285
H	-1.2557994	1.9105324	1.1937883
P	3.9825776	1.3399311	-3.7544948
P	0.8189986	-4.2751219	3.0121877
O	1.7374676	-3.7080231	1.9625464
O	4.4343450	0.0973265	-3.0400714
C	1.3966945	-5.6885701	3.9474751
C	5.0887809	2.0455969	-4.9778586
C	0.6573655	-6.2085642	5.0319380
C	2.6275663	-6.2640846	3.5717986
C	4.7678930	3.2341267	-5.6682749
C	6.3055999	1.3781190	-5.2225544
H	1.1794675	-2.3330181	0.5392024
C	0.9991400	-1.6400030	-0.3062801
Cl	0.1596578	-0.1719135	0.3986557
H	0.3120269	-2.0423745	-1.0698483
Cl	2.5285488	-1.1871944	-1.0613205
C	1.1588320	-7.3122359	5.7364403
C	3.1190034	-7.3688770	4.2846946
C	2.3863016	-7.8913048	5.3640332
C	7.2050590	1.9021671	-6.1643502
C	5.6732755	3.7487038	-6.6072232
C	6.8890053	3.0843055	-6.8552007
H	-0.2994901	-5.7533009	5.3265355
H	3.1922960	-5.8412128	2.7278287
H	3.8193881	3.7547758	-5.4707586
H	6.5394094	0.4545495	-4.6720639
H	0.5898801	-7.7220674	6.5841898
H	4.0797118	-7.8207380	3.9963211
H	2.7750113	-8.7561763	5.9226363
H	8.1568488	1.3850629	-6.3575149
H	5.4304624	4.6752514	-7.1487796
H	7.5954986	3.4934926	-7.5932391

2bC3ii

Energy = -5219.915754727

C	-4.4273773	0.5733974	3.9944298
C	-5.2196798	-0.1739220	3.0636200
C	-3.1061565	0.5426950	3.5423499
C	-4.3655282	-0.6415198	2.0609358
N	-3.0981131	-0.1848864	2.3682643
C	-1.8293903	1.1195311	4.1395636
C	-1.5417221	2.4905205	3.5573715
C	-4.6223302	-1.5371522	0.8597026
C	-4.6779944	-0.7350217	-0.4271058
C	-1.0680386	4.0231865	1.9482803
N	-3.6291257	0.0680550	-0.8368790
C	-3.8752642	0.5801587	-2.0982835
C	-5.6320933	-0.7189198	-1.4449880
C	-5.1268599	0.1083428	-2.4968094
C	-2.8925450	1.4875846	-2.8164616
H	-4.7844088	1.0736442	4.9006812
H	-6.2969593	-0.3602327	3.1262085
C	-2.0117752	1.2672175	5.6707097
C	-5.9719145	-2.2680811	1.0550558
H	-6.5922522	-1.2448298	-1.4347316
H	-5.6354545	0.3453770	-3.4368405
C	-1.5304853	0.7936870	-3.0629498
C	-3.4839930	1.8445530	-4.2029950
C	-0.6706185	4.5243760	0.5728076
C	-1.6796203	4.1303931	-0.4927816
N	-1.7432921	2.8462883	-1.0066783
C	-2.6663466	2.7739863	-2.0347336
C	-2.6049666	4.8972571	-1.2038390
C	-3.2260160	4.0449221	-2.1720572
C	0.7346140	3.9917357	0.1984520
C	-0.5688755	6.0682817	0.6161352
H	-2.8040930	5.9633834	-1.0545115
H	-3.9955984	4.3317077	-2.8956997
N	-1.3084421	2.6868938	2.2085192
C	-1.4626908	3.7391662	4.1752822
C	-1.1633587	4.7033947	3.1624219
H	-1.6158717	3.9411626	5.2401546
H	-1.0377670	5.7812165	3.3064388
C	-0.6611985	0.1301021	3.9100676
C	0.6122354	0.5337613	3.4655031
C	-0.8600374	-1.2261562	4.2358508
C	1.6610119	-0.3969689	3.3533925

C	0.1958240	-2.1368752	4.1399800
C	1.4683421	-1.7435259	3.6967331
H	0.7874149	1.5870053	3.2090494
H	-1.8378723	-1.5805969	4.5912047
H	2.6493434	-0.0633538	3.0030281
H	2.2795717	-2.4805237	3.6289539
C	-3.5133961	-2.6138111	0.7749905
C	-3.0174772	-3.0706196	-0.4603268
C	-3.0250645	-3.1984985	1.9581971
C	-2.0425722	-4.0794569	-0.5112874
C	-2.0611598	-4.2079250	1.8915171
C	-1.5521168	-4.6631265	0.6659131
C	-0.4573745	1.5638186	-3.5612066
C	-1.3358566	-0.5871682	-2.8731503
C	0.7547660	0.9478554	-3.8926014
C	-0.1075122	-1.1921794	-3.1914843
C	0.9453632	-0.4337336	-3.7213633
C	1.1224020	3.9160813	-1.1532508
C	1.6777436	3.6650599	1.1938214
H	-3.4136938	-2.6374407	-1.3901540
H	-3.3952765	-2.8752813	2.9411022
O	-1.6665569	-4.8016733	3.1013400
H	-0.7913069	-5.4544532	0.6441258
H	-0.5667167	2.6471913	-3.7124624
H	-2.1515300	-1.1994830	-2.4694166
H	0.0275153	-2.2717464	-3.0289285
H	1.9021917	-0.8909592	-4.0043931
C	2.9826173	3.2767896	0.8440134
C	2.4251727	3.5288295	-1.4889613
C	3.3712518	3.2034401	-0.5031620
H	0.4153645	4.1697988	-1.9542878
H	1.3852363	3.7341483	2.2518493
H	3.7088980	3.0255716	1.6318432
H	4.3837832	2.8951013	-0.7949144
H	-1.0815692	1.6539034	6.1287039
H	-2.2525961	0.2887105	6.1264006
H	-2.8333376	1.9719014	5.9009339
H	-5.9592921	-2.8452632	1.9986618
H	-6.1520491	-2.9684941	0.2179060
H	-6.8085802	-1.5434223	1.0919853
H	-2.8070307	2.5286051	-4.7477394
H	-4.4665450	2.3415371	-4.0905867
H	-3.6224077	0.9271062	-4.8059426
H	-0.2832589	6.4591221	-0.3785030
H	0.1997045	6.3797099	1.3476238
H	-1.5386886	6.5125071	0.9123374

O	1.7745354	1.7268450	-4.4536016
O	2.7761327	3.5117924	-2.8437471
O	-0.0237729	-3.4412607	4.6008004
H	-1.6596060	-4.4216491	-1.4845938
H	-2.2599670	-0.3415166	1.7874855
H	-2.7307294	0.1711258	-0.3317640
H	-1.2357971	2.0240974	-0.6341972
H	-1.2353706	1.9181235	1.5210962
P	3.1488068	2.0932996	-3.6118638
P	-0.1250896	-4.7874349	3.6657236
O	0.9363556	-4.9139312	2.5971467
O	3.6407910	1.0184880	-2.6863738
C	-0.1517182	-6.0756003	4.9074861
C	4.2432842	2.6193599	-4.9283002
C	-1.0756287	-6.0465577	5.9742090
C	0.7853628	-7.1222072	4.7927624
C	3.8638624	3.5959038	-5.8738588
C	5.5136215	2.0106609	-4.9922787
C	-1.0548032	-7.0751431	6.9266089
C	0.7968832	-8.1460501	5.7526338
C	-0.1208818	-8.1220575	6.8164369
C	6.4082627	2.3797720	-6.0086710
C	4.7665764	3.9588439	-6.8842307
C	6.0349603	3.3523555	-6.9522657
H	-1.8031461	-5.2262377	6.0611195
H	1.4988965	-7.1262056	3.9555861
H	2.8715150	4.0674116	-5.8231774
H	5.7883895	1.2515252	-4.2455870
H	-1.7707438	-7.0599513	7.7618463
H	1.5269445	-8.9649017	5.6692122
H	-0.1092147	-8.9259562	7.5679844
H	7.3998797	1.9066609	-6.0632353
H	4.4787147	4.7193893	-7.6252215
H	6.7375707	3.6415243	-7.7482764
C	1.3003750	-1.9118975	0.4403277
N	0.0026381	-1.5388778	0.6618690
N	2.0891096	-0.9194363	-0.0466278
C	-0.0735153	-0.2500840	0.3045372
C	1.2646727	0.2655840	-0.2082975
O	-1.1090480	0.4831807	0.3891934
C	3.5149232	-1.0029680	-0.3393312
N	1.7545275	-3.1466721	0.6682772
H	1.2376596	-3.7864762	1.3067262
H	2.7548559	-3.3274109	0.5762960
H	1.6297976	1.1199108	0.3992468
H	1.2038854	0.6004662	-1.2643906

H	3.8801465	0.0378893	-0.4188392
C	3.8263691	-1.7330324	-1.6513765
C	5.2782271	-1.5453242	-2.1054501
C	5.4626592	-1.7937498	-3.6067061
C	6.8875759	-1.5360037	-4.1094260
C	7.0259217	-1.6530285	-5.6300422
H	4.0338915	-1.4706715	0.5277800
H	3.1608243	-1.2954818	-2.4175151
H	3.5705136	-2.8117815	-1.5734926
H	5.5769508	-0.4970256	-1.8905182
H	5.9628914	-2.1974692	-1.5181538
H	4.7590779	-1.1247428	-4.1519290
H	5.1582630	-2.8335186	-3.8643057
H	7.2061780	-0.5195671	-3.7836140
H	7.5907551	-2.2385598	-3.6090535
H	6.3686894	-0.9222157	-6.1474073
H	6.7363898	-2.6647264	-5.9843841
H	8.0660477	-1.4636760	-5.9650321
H	-3.6398508	2.7434695	0.3725260
C	-4.5326241	2.6762185	1.0116360
Cl	-4.5207826	4.0827048	2.1221018
H	-4.5541514	1.7620238	1.6252491
Cl	-5.9699958	2.6399604	-0.0587134

3io

Energy = -4627.480826822

C	0.1859716	-5.5081944	-0.7032957
C	1.4312668	-5.1506936	-1.3161284
C	-0.5911622	-4.3526402	-0.6102504
C	1.3942827	-3.7824525	-1.5866917
N	0.1583903	-3.3255442	-1.1604699
C	-1.8723794	-4.0915130	0.1656915
C	-2.8115230	-3.1534383	-0.5758793
C	2.4807979	-2.8362503	-2.0739376
C	1.9407877	-1.9152443	-3.1572308
C	-3.7063115	-1.1368825	-1.1626936
N	1.2951949	-0.7131426	-2.8852123
C	0.9864211	-0.0492491	-4.0655024
C	1.9791853	-2.0481307	-4.5434627
C	1.3816373	-0.8788893	-5.1127067
C	0.3381993	1.3252135	-4.0918067
H	-0.0947880	-6.5008792	-0.3359712
H	2.2743211	-5.8205464	-1.5139570
C	-2.5912424	-5.4368065	0.4254564
C	3.6528205	-3.6666300	-2.6533668
H	2.4030839	-2.8948567	-5.0933970
H	1.2622450	-0.6639952	-6.1796254
C	1.0175505	2.2804510	-3.0815110
C	0.5295749	1.9477413	-5.4961317
C	-3.7784084	0.3750095	-1.3168026
C	-3.0045806	0.7804349	-2.5575615
N	-1.6226851	0.7032041	-2.6058550
C	-1.1456528	1.2022673	-3.8065363
C	-3.4263248	1.3063370	-3.7764181
C	-2.2578481	1.5703653	-4.5626365
C	-3.2211409	1.1228278	-0.0830354
C	-5.2582798	0.7995910	-1.4771969
H	-4.4644171	1.4906973	-4.0707148
H	-2.2353612	1.9949149	-5.5712478
N	-2.6395090	-1.7753500	-0.5538429
C	-3.9945664	-3.4000902	-1.2711640
C	-4.5552303	-2.1351772	-1.6413898
H	-4.4235181	-4.3865684	-1.4770685
H	-5.4807191	-1.9743354	-2.2043433
C	-1.5207978	-3.4632021	1.5422942
C	-2.4988527	-2.7583066	2.2757570
C	-0.2310957	-3.5881106	2.0863048
C	-2.1756229	-2.1443010	3.4954984

C	0.0727196	-2.9878769	3.3142659
C	-0.8780719	-2.2408285	4.0238253
H	-3.5206680	-2.6767990	1.8767632
H	0.5482345	-4.1490156	1.5541897
H	-2.9456263	-1.5855399	4.0480427
H	-0.6049930	-1.7609311	4.9735463
C	3.0416956	-2.0208256	-0.8797324
C	3.6237444	-0.7502358	-1.0669855
C	3.0136443	-2.5611677	0.4194282
C	4.0823007	-0.0006836	0.0276922
C	3.5181615	-1.8222891	1.4959777
C	4.0256093	-0.5257300	1.3265868
C	0.2710595	3.3028327	-2.4640194
C	2.4082561	2.2158336	-2.8626176
C	0.9136245	4.2214025	-1.6186306
C	3.0405096	3.1499151	-2.0272494
C	2.2982986	4.1561875	-1.3916908
C	-2.5802467	2.3629141	-0.2694278
C	-3.4231332	0.6472657	1.2277418
H	3.7038675	-0.3281479	-2.0771101
H	2.5948038	-3.5607541	0.5987569
O	3.5573050	-2.4196550	2.7614823
H	4.3771936	0.0452401	2.1965531
H	-0.8031640	3.4046218	-2.6688497
H	3.0015000	1.4416833	-3.3706369
H	4.1272548	3.0943116	-1.8651274
H	2.7704799	4.8881680	-0.7216160
C	-2.9812181	1.4025758	2.3282672
C	-2.1315948	3.1037929	0.8335403
C	-2.3324244	2.6344936	2.1438949
H	-2.4606951	2.7715570	-1.2783837
H	-3.9366513	-0.3100014	1.3917169
H	-3.1390312	1.0247888	3.3491316
H	-1.9686318	3.2291457	2.9936063
H	-3.5317699	-5.2650848	0.9821855
H	-1.9484726	-6.1039350	1.0300682
H	-2.8286680	-5.9484908	-0.5275375
H	4.0934822	-4.3052971	-1.8647675
H	4.4405764	-2.9896993	-3.0338466
H	3.3108268	-4.3191899	-3.4795945
H	0.0891262	2.9618921	-5.5222268
H	0.0389748	1.3325650	-6.2746426
H	1.6072992	2.0265621	-5.7319535
H	-5.3273252	1.8980566	-1.5912767
H	-5.8368372	0.4964107	-0.5842460
H	-5.7139414	0.3264817	-2.3680045

O	1.3454215	-3.1966804	3.8524311
H	4.4902329	1.0072896	-0.1341640
H	-0.2045401	-2.3901893	-1.3532459
H	1.3071871	-0.2674837	-1.9617106
H	-1.0378608	0.4604875	-1.8029536
H	-1.9587418	-1.2958831	0.0457800
P	2.5062345	-2.0317066	3.9697237
O	1.9978066	-0.6146780	3.9477788
C	3.4121287	-2.5493444	5.4279332
C	3.6000870	-1.5988865	6.4521765
C	3.9145060	-3.8618386	5.5619070
C	4.2944524	-1.9646746	7.6163019
C	4.6064973	-4.2158824	6.7292480
C	4.7957265	-3.2702486	7.7544996
H	3.2011216	-0.5808821	6.3309921
H	3.7652353	-4.6011022	4.7615130
H	4.4431004	-1.2263769	8.4182703
H	5.0003219	-5.2371317	6.8410128
H	5.3383506	-3.5556407	8.6684672
C	-1.4490337	6.9358647	0.1636313
C	-2.4010223	7.8478330	-0.3347269
H	-3.0516629	7.5525947	-1.1713082
C	-2.5053789	9.1232994	0.2428720
H	-3.2456413	9.8393326	-0.1442751
C	-1.6654329	9.4819995	1.3107445
H	-1.7483102	10.4824785	1.7618883
C	-0.7175800	8.5671978	1.8072014
H	-0.0619250	8.8511438	2.6440061
C	-0.6045074	7.2911149	1.2374438
H	0.1344822	6.5740420	1.6234883
P	-1.3651034	5.3158222	-0.6016945
O	0.2395583	5.2565097	-0.9775382
O	-2.3315000	5.0430385	-1.7205256
O	-1.4582300	4.3077397	0.7073040
H	1.1560788	0.3546714	2.4253989
C	0.4946140	0.7508540	1.6304845
Cl	0.2480954	-0.6192879	0.4695095
Cl	1.2346089	2.1492335	0.8297198
H	-0.5064748	1.0312163	1.9973647

2bC3io

Energy = -5219.916074711

C	-0.1733994	-5.7801788	-1.7649736
C	1.0666717	-5.2905087	-2.2878969
C	-0.7081798	-4.7865107	-0.9403563
C	1.2650883	-4.0084459	-1.7708010
N	0.1757761	-3.7243314	-0.9705900
C	-1.9462286	-4.7691551	-0.0548876
C	-3.0607425	-3.9294765	-0.6528228
C	2.3926584	-3.0034280	-1.9787245
C	2.0420838	-2.0469420	-3.1044310
C	-4.0803298	-1.9973724	-1.2837982
N	0.9873802	-1.1602223	-3.0017477
C	0.8870867	-0.3856538	-4.1433768
C	2.6211320	-1.8532026	-4.3586429
C	1.8937138	-0.8090720	-5.0131795
C	-0.0485326	0.8094469	-4.2222018
H	-0.6198958	-6.7609469	-1.9595230
H	1.7387231	-5.8179952	-2.9727332
C	-2.4523136	-6.2179323	0.1340028
C	3.6834436	-3.7665813	-2.3638256
H	3.4668812	-2.4136244	-4.7694617
H	2.0917706	-0.4045417	-6.0109370
C	0.3955494	1.8704473	-3.1799847
C	0.0932402	1.4656054	-5.6165252
C	-4.1935795	-0.5213851	-1.6218195
C	-3.3707139	-0.1781810	-2.8556810
N	-2.0059331	0.0340326	-2.7828670
C	-1.5010661	0.4149609	-4.0154716
C	-3.7524167	0.0541349	-4.1765575
C	-2.5786395	0.4277076	-4.9053985
C	-3.7388453	0.3897149	-0.4522870
C	-5.6811685	-0.1993296	-1.9051263
H	-4.7700170	-0.0187429	-4.5737634
H	-2.5323131	0.7012765	-5.9642685
N	-2.8815510	-2.5879367	-0.9303921
C	-4.4104589	-4.2155035	-0.8600574
C	-5.0521939	-2.9997381	-1.2583268
H	-4.8877869	-5.1932756	-0.7366641
H	-6.1104004	-2.8774346	-1.5112460
C	-1.5826550	-4.2043075	1.3423719
C	-2.5129166	-3.4586517	2.0932900
C	-0.3216634	-4.4698069	1.9049236
C	-2.1798871	-2.9651244	3.3642506

C	-0.0065608	-3.9755290	3.1742495
C	-0.9166255	-3.2139068	3.9206132
H	-3.5129377	-3.2737417	1.6748089
H	0.4265278	-5.0595718	1.3582496
H	-2.9164746	-2.3775590	3.9332830
H	-0.6337278	-2.8287514	4.9089613
C	2.6803656	-2.2426900	-0.6589342
C	2.9091299	-0.8524008	-0.6163052
C	2.7993259	-2.9760562	0.5385169
C	3.2341052	-0.2122342	0.5925424
C	3.1498969	-2.3300621	1.7290572
C	3.3624325	-0.9443714	1.7817831
C	-0.5438409	2.7305829	-2.5793569
C	1.7652909	2.0265753	-2.8786981
C	-0.1059190	3.7126051	-1.6745779
C	2.1919898	3.0437715	-2.0105793
C	1.2590079	3.8980141	-1.4031969
C	-3.6384710	1.7787266	-0.6872907
C	-3.4773836	-0.0986604	0.8407837
H	2.8336070	-0.2609026	-1.5377318
H	2.6413923	-4.0636143	0.5475376
O	3.3877248	-3.1170428	2.8625037
H	3.6265349	-0.4656577	2.7343528
H	-1.6116992	2.6339344	-2.8085417
H	2.4976341	1.3526633	-3.3471029
H	3.2641064	3.1689893	-1.7963238
H	1.5646098	4.6923839	-0.7089643
C	-3.1231104	0.7788589	1.8809581
C	-3.2922999	2.6444840	0.3609031
C	-3.0327535	2.1586707	1.6546210
H	-3.8388593	2.1918547	-1.6859771
H	-3.5349436	-1.1749244	1.0394802
H	-2.9025490	0.3755123	2.8801905
H	-2.7611709	2.8623475	2.4535851
H	-3.3216816	-6.2334329	0.8179644
H	-1.6526138	-6.8478002	0.5675421
H	-2.7623364	-6.6521876	-0.8363846
H	3.9534378	-4.4880238	-1.5704851
H	4.5206648	-3.0557023	-2.5003883
H	3.5411211	-4.3241006	-3.3095344
H	-0.5755104	2.3432181	-5.6919126
H	-0.1678418	0.7451404	-6.4154085
H	1.1340300	1.8038859	-5.7756682
H	-5.8017429	0.8647006	-2.1806261
H	-6.2918479	-0.4050164	-1.0057930
H	-6.0636461	-0.8205085	-2.7374397

O	1.2438480	-4.3256266	3.7036528
H	3.4024086	0.8750565	0.6037947
H	0.0276868	-2.8166277	-0.4967355
H	0.4222189	-1.0494092	-2.1435986
H	-1.4465751	-0.1382613	-1.9307491
H	-2.0023433	-2.0692662	-0.7692506
P	2.3969624	-3.2535976	4.1646215
O	1.8731538	-1.9531330	4.7273501
C	3.4111045	-4.2305285	5.2703442
C	3.6074096	-3.7559344	6.5831430
C	3.9931291	-5.4451343	4.8477467
H	-1.0085923	-3.3068262	-3.0550013
C	-1.4448357	-3.0953492	-4.0443216
Cl	-3.0423750	-3.9016342	-4.1250800
Cl	-0.2984619	-3.6915526	-5.2874595
C	4.3905826	-4.5025640	7.4773858
C	4.7731673	-6.1826232	5.7496994
C	4.9717026	-5.7125995	7.0614008
H	3.1467287	-2.8069559	6.8947220
H	3.8385234	-5.8103564	3.8219966
H	4.5471669	-4.1368996	8.5030958
H	5.2298584	-7.1301156	5.4272504
H	5.5854404	-6.2961316	7.7642318
H	-1.5978199	-2.0174630	-4.2203093
C	0.3257599	0.3115512	2.3863331
N	0.0636899	-0.8057652	1.6388212
N	0.2021888	1.4781002	1.6954456
C	-0.2105779	-0.3631547	0.4076224
C	-0.0930674	1.1449150	0.3178654
O	-0.5256930	-1.0726402	-0.5995846
C	0.4479490	2.8339594	2.1563022
N	0.6465036	0.2482364	3.6776867
H	0.9690153	-0.6654177	4.0679814
H	0.9355315	1.0938863	4.1697728
H	-1.0315876	1.6105788	-0.0419015
H	0.7277405	1.4300900	-0.3740402
H	-0.2120357	3.4981727	1.5605155
C	1.9079022	3.2778285	2.0048906
C	2.0894552	4.7785298	2.2478197
C	3.5174206	5.2691559	1.9895816
C	3.6961756	6.7781637	2.1984860
C	5.1223185	7.2649907	1.9258125
H	0.1061209	2.9255869	3.2092099
H	2.2404945	3.0260647	0.9759447
H	2.5530117	2.6917324	2.6944432
H	1.3837308	5.3391424	1.5920521

H	1.7888257	5.0295677	3.2893361
H	3.8117379	5.0049784	0.9479430
H	4.2229856	4.7152836	2.6491710
H	2.9819866	7.3222456	1.5403881
H	3.4027528	7.0384439	3.2398825
H	5.4268025	7.0480584	0.8802587
H	5.8535666	6.7625440	2.5935856
H	5.2201813	8.3584847	2.0837244
C	-2.7456677	6.4974966	-0.6533122
C	-3.3039575	7.3982866	-1.5827153
H	-3.6530346	7.0278336	-2.5577953
C	-3.4072335	8.7583843	-1.2500372
H	-3.8427825	9.4655982	-1.9714309
C	-2.9555484	9.2126437	0.0008098
H	-3.0367992	10.2794688	0.2584417
C	-2.4006075	8.3095838	0.9273109
H	-2.0503102	8.6685564	1.9064545
C	-2.2933017	6.9493795	0.6056994
H	-1.8641689	6.2414180	1.3295134
P	-2.5923078	4.7796801	-1.1413629
O	-0.9695065	4.5108351	-0.9354897
O	-3.1567091	4.3882974	-2.4780076
O	-3.2227989	4.0284995	0.1858838

300

Energy = -4627.480850672

C	2.5053725	-0.8885340	3.0976936
C	3.7945757	-0.7587526	3.6131701
H	4.3088376	-1.4931209	4.2425952
C	4.3206513	0.4983369	3.1699680
H	5.3012397	0.9178516	3.4187333
C	3.3455154	1.1138363	2.3880553
C	3.2448647	2.5166436	1.8088162
C	1.7979654	3.0126693	2.0809018
C	1.2939052	3.0200546	3.4000630
H	1.9374303	2.6980163	4.2325630
C	-0.0313643	3.4060109	3.6504682
H	-0.4162845	3.4059900	4.6814295
C	-0.8786215	3.7870134	2.5959564
H	-1.9230686	4.0816989	2.7689164
C	-0.3701124	3.7798093	1.2898362
C	0.9560853	3.4018518	1.0277659
H	1.3264774	3.4050343	-0.0012780
C	-2.1951486	6.1773645	-1.1924816
C	-1.8232026	7.5244188	-1.3742553
H	-0.7592567	7.7860317	-1.4726389
C	-2.8170085	8.5147801	-1.4300834
H	-2.5321134	9.5675711	-1.5745264
C	-4.1708712	8.1598878	-1.3036429
H	-4.9484558	8.9376155	-1.3488854
C	-4.5380871	6.8133207	-1.1191523
H	-5.5990711	6.5396423	-1.0194876
C	-3.5538093	5.8166275	-1.0617667
H	-3.8365353	4.7637901	-0.9166667
C	4.2453680	3.4499070	2.5299611
H	4.1227122	4.4905899	2.1751555
H	5.2869451	3.1336520	2.3284634
H	4.0767238	3.4335598	3.6227290
C	3.5332071	2.5465630	0.3186927
C	4.0761373	3.5565021	-0.4759453
H	4.5161447	4.4909134	-0.1126877
C	3.9085693	3.1733223	-1.8459178
H	4.2052008	3.7552487	-2.7247994
C	3.2637950	1.9364302	-1.8644061
C	2.6961765	1.1228706	-3.0135902
C	1.1631865	1.3540414	-3.1191490
C	0.5906719	2.5413705	-2.6220454
H	1.2299987	3.3183029	-2.1803808

C	-0.7969224	2.7392331	-2.7058926
C	-1.6362671	1.7735917	-3.2850970
H	-2.7202464	1.9492028	-3.3151257
C	-1.0582843	0.6131980	-3.8179789
H	-1.6989657	-0.1451159	-4.2909081
C	0.3295030	0.4064447	-3.7478762
H	0.7601579	-0.5080489	-4.1778231
C	3.3318183	1.5982085	-4.3430117
H	2.9434835	0.9945217	-5.1850142
H	4.4343978	1.5036132	-4.3121012
H	3.0777392	2.6588428	-4.5299232
C	3.0035655	-0.3536996	-2.8070320
C	4.0755336	-1.1334272	-3.2383242
H	4.9352143	-0.7759370	-3.8149675
C	3.8407132	-2.4802926	-2.8061955
H	4.4821659	-3.3468290	-2.9997735
C	2.6303970	-2.4989195	-2.1152477
C	1.8050557	-3.6428734	-1.5450282
C	0.3192662	-3.3932647	-1.9160578
C	-0.0475954	-3.1661850	-3.2600656
H	0.7262324	-3.1584475	-4.0426197
C	-1.3886786	-2.9371998	-3.6023836
H	-1.6630653	-2.7679712	-4.6544303
C	-2.3898725	-2.9155083	-2.6150375
H	-3.4430452	-2.7210291	-2.8615628
C	-2.0162459	-3.1356573	-1.2820042
C	-0.6800124	-3.3817593	-0.9298037
H	-0.4265464	-3.5723849	0.1169818
C	2.2555357	-4.9753817	-2.1866229
H	1.6134588	-5.8046687	-1.8344083
H	3.3040877	-5.2041677	-1.9154332
H	2.1814478	-4.9189865	-3.2884137
C	-4.8711091	-4.5907366	0.9009068
C	-5.0820363	-5.9847309	0.8892282
H	-4.2226173	-6.6655054	0.9789074
C	-6.3877210	-6.4846821	0.7641769
H	-6.5581746	-7.5716211	0.7561126
C	-7.4717923	-5.5973766	0.6519230
H	-8.4947266	-5.9914154	0.5544672
C	-7.2567319	-4.2061310	0.6639243
H	-8.1086347	-3.5153567	0.5773613
C	-5.9568830	-3.6955817	0.7868428
H	-5.7859423	-2.6091619	0.7953748
C	1.9611770	-3.7459358	-0.0387871
C	2.1617240	-4.8499651	0.7900549
H	2.3484409	-5.8758800	0.4570316

C	2.0519564	-4.4039927	2.1480412
H	2.1533864	-5.0205396	3.0471131
C	1.7829079	-3.0365089	2.1215155
C	1.5067529	-2.0309735	3.2243227
C	0.0383307	-1.5420813	3.1389778
C	-0.9508695	-2.4227884	2.6526125
H	-0.6760078	-3.4390619	2.3357260
C	-2.2960425	-2.0189226	2.6192569
C	-2.6822184	-0.7354459	3.0387943
H	-3.7372467	-0.4369364	2.9711722
C	-1.7001027	0.1289124	3.5407988
H	-1.9833177	1.1367292	3.8764357
C	-0.3565993	-0.2745548	3.6126211
H	0.3847832	0.4165602	4.0358966
C	1.6834215	-2.7145527	4.6018548
H	0.9599852	-3.5447945	4.7106811
H	1.5036653	-1.9828381	5.4115486
H	2.7051607	-3.1254939	4.7133821
P	-0.8903883	4.9475745	-1.1142180
P	-3.1812056	-4.0075409	1.0190032
O	-1.2468802	4.1164510	0.2691615
O	0.5214086	5.4469761	-1.2364946
O	-1.4231563	3.9002116	-2.2691559
O	-3.0033093	-3.0170014	-0.3078950
O	-2.1178416	-5.0546889	1.1851830
O	-3.3222766	-2.8683499	2.2006448
N	2.2721063	0.2338099	2.3177098
H	1.3384132	0.5113969	1.9992670
N	3.0529882	1.5763834	-0.5442870
H	2.6931389	0.6682940	-0.2456756
N	2.1638233	-1.1927038	-2.0875664
H	1.2070178	-0.9332775	-1.8274524
N	1.7520054	-2.6584921	0.7919232
H	1.5065643	-1.7201795	0.4721218
H	-2.0719925	-0.9070316	0.3399188
C	-1.8175733	-0.0578601	-0.3120543
Cl	-0.0613962	0.3044357	-0.0543553
Cl	-2.8470190	1.3221852	0.1020125
H	-1.9261180	-0.2870642	-1.3850314

2bC300

Energy = -5219.910896521

C	3.0856544	-1.4015906	2.7580400
C	4.2321229	-1.0812016	3.4894522
H	4.7400464	-1.7347798	4.2062852
C	4.6049320	0.2595370	3.1463191
H	5.4474509	0.8250505	3.5574413
C	3.6794159	0.7312859	2.2108978
C	3.5027414	2.1079196	1.5864865
C	2.0511193	2.6059065	1.8233906
C	1.3931322	2.3109779	3.0348603
H	1.8938273	1.6746624	3.7785505
C	0.1230780	2.8435719	3.3056214
H	-0.3732696	2.6209124	4.2621869
C	-0.5221660	3.6606087	2.3653158
H	-1.5152256	4.0899390	2.5547674
C	0.1287348	3.9423547	1.1542051
C	1.4126366	3.4388238	0.8813385
H	1.9302715	3.7130581	-0.0486756
C	-1.6751232	6.0256929	-1.7640030
C	-1.3138296	7.1496065	-2.5334506
H	-0.2720322	7.2688540	-2.8654531
C	-2.2891334	8.1044047	-2.8634996
H	-2.0105239	8.9841372	-3.4622392
C	-3.6143825	7.9358859	-2.4279641
H	-4.3765725	8.6860834	-2.6873205
C	-3.9727557	6.8106498	-1.6613416
H	-5.0119125	6.6812451	-1.3238632
C	-3.0062898	5.8522816	-1.3268213
H	-3.2853513	4.9723336	-0.7292972
C	4.4412914	3.1066154	2.3059038
H	4.2930138	4.1267315	1.9049875
H	5.4998196	2.8190341	2.1560880
H	4.2241959	3.1227490	3.3904143
C	3.8307855	2.1113162	0.1054634
C	4.6586907	2.9505269	-0.6420637
H	5.3125378	3.7323733	-0.2419204
C	4.5000566	2.6007870	-2.0219544
H	5.0068762	3.0639115	-2.8749416
C	3.5812570	1.5553188	-2.0847058
C	2.9601956	0.8203551	-3.2601331
C	1.4201624	0.9835376	-3.2054969
C	0.8917192	2.1449135	-2.6071850
H	1.5686613	2.9066390	-2.2029064

C	-0.4945875	2.3263887	-2.5267390
C	-1.3850389	1.3779444	-3.0576957
H	-2.4686199	1.5366164	-2.9682878
C	-0.8546755	0.2346214	-3.6733317
H	-1.5348266	-0.5312114	-4.0737269
C	0.5338632	0.0376556	-3.7567691
H	0.9197184	-0.8764837	-4.2263255
C	3.4515741	1.4583827	-4.5810401
H	3.0090288	0.9281582	-5.4456636
H	4.5544488	1.4038695	-4.6597908
H	3.1521003	2.5230403	-4.6246811
C	3.3759971	-0.6427084	-3.2258464
C	4.4648920	-1.2962818	-3.8072796
H	5.2361095	-0.8278310	-4.4274956
C	4.3923820	-2.6778560	-3.4368108
H	5.0825127	-3.4715475	-3.7400449
C	3.2637634	-2.8416847	-2.6324276
C	2.5684072	-4.0850006	-2.0973800
C	1.0834130	-3.9898924	-2.5367043
C	0.7750366	-3.6828620	-3.8806311
H	1.5918050	-3.5207009	-4.6002495
C	-0.5580341	-3.5520065	-4.2913141
H	-0.7900104	-3.3122023	-5.3401310
C	-1.6071949	-3.7045453	-3.3681877
H	-2.6583194	-3.5795167	-3.6650888
C	-1.2900394	-3.9991824	-2.0374038
C	0.0386640	-4.1641540	-1.6192493
H	0.2641265	-4.4002891	-0.5751973
C	3.1951373	-5.3385584	-2.7485724
H	2.6622537	-6.2490516	-2.4148564
H	4.2609204	-5.4291748	-2.4630961
H	3.1267682	-5.2781640	-3.8507045
C	-4.1068807	-5.3409419	0.4118635
C	-4.3039739	-6.7341013	0.4950935
H	-3.4336418	-7.4052149	0.5431330
C	-5.6103045	-7.2480498	0.5204952
H	-5.7680910	-8.3348196	0.5876806
C	-6.7109377	-6.3761638	0.4643469
H	-7.7337728	-6.7817254	0.4846187
C	-6.5109113	-4.9849958	0.3872828
H	-7.3743296	-4.3041234	0.3502701
C	-5.2104946	-4.4619008	0.3634001
H	-5.0521155	-3.3746727	0.3184340
C	2.7045632	-4.2054051	-0.5886063
C	3.1247016	-5.2791904	0.1975269
H	3.4738912	-6.2485117	-0.1724078

C	3.0379067	-4.8764581	1.5674279
H	3.3021112	-5.4812417	2.4409576
C	2.5654417	-3.5640658	1.5902487
C	2.2154013	-2.6543199	2.7568277
C	0.7167703	-2.2607793	2.7151285
C	-0.2135118	-3.0747862	2.0409998
H	0.1198702	-3.9947295	1.5439719
C	-1.5688021	-2.7100925	2.0154659
C	-2.0287185	-1.5627291	2.6809974
H	-3.0960588	-1.3061560	2.6394587
C	-1.1050108	-0.7789366	3.3878533
H	-1.4528218	0.1152740	3.9260934
C	0.2557403	-1.1206553	3.4052490
H	0.9697454	-0.4909602	3.9522911
C	2.4494397	-3.4250437	4.0789428
H	1.8022537	-4.3215519	4.1145889
H	2.2099211	-2.7784237	4.9439077
H	3.5039197	-3.7514399	4.1627861
P	-0.3930687	4.8337778	-1.3717602
P	-2.4144188	-4.7434278	0.3565055
O	-0.5751757	4.7542860	0.2670173
O	0.9878186	5.1185043	-1.8890559
O	-1.0753092	3.3984084	-1.8468105
O	-2.3717933	-4.0479729	-1.1528221
O	-1.3262587	-5.7366522	0.6444170
O	-2.5472627	-3.4426130	1.3542097
N	2.7822918	-0.2962670	1.9869074
H	2.0111531	-0.2782143	1.2998322
N	3.1982296	1.2666822	-0.7884393
H	2.4500301	0.5943899	-0.5524333
N	2.6813285	-1.5934119	-2.5018011
H	1.8332659	-1.3944299	-1.9547371
N	2.3804266	-3.1743079	0.2758638
H	1.9194473	-2.2883071	0.0043500
N	-1.0319955	-1.3063878	-0.7046351
N	-3.3638421	-1.2290285	-0.9708966
N	-2.1298982	0.5574766	0.0258126
C	-2.2251678	-0.6679555	-0.5517361
C	-3.1475214	1.5839107	0.1871980
C	-3.5236115	1.8516560	1.6487415
H	-4.0368574	1.3037109	-0.4127560
O	1.1526531	-0.6796373	-0.2379773
C	-0.0972183	-0.4735229	-0.2309014
C	-0.7287619	0.7865098	0.3363718
H	-3.3042682	-2.2023003	-1.2898319
H	-4.2746544	-0.7974561	-0.8246933

H	-0.3329145	1.6982101	-0.1457058
H	-0.5411665	0.8632803	1.4288884
H	-2.5938150	1.8659131	2.2543491
H	-4.1398388	1.0155743	2.0420858
C	-4.2518692	3.1880244	1.8129803
H	-5.1876689	3.1850858	1.2112961
H	-3.6173211	3.9932980	1.3758663
C	-4.5752721	3.5427629	3.2672870
H	-3.6368417	3.5202519	3.8668552
H	-5.2281166	2.7544762	3.7052194
C	-5.2448040	4.9131203	3.4272543
H	-6.1811357	4.9322733	2.8266830
H	-4.5864152	5.6921653	2.9811832
C	-5.5556138	5.2726723	4.8830265
H	-2.7444729	2.5113076	-0.2733659
H	-4.6308473	5.2945827	5.4970772
H	-6.2404162	4.5298484	5.3439546
H	-6.0370558	6.2682819	4.9653698
H	4.9382397	-1.0512399	0.9127092
C	5.2156032	-1.3878695	-0.0985546
Cl	5.8932040	-3.0414144	0.0416415
Cl	6.3853433	-0.2051463	-0.7651770
H	4.3548997	-1.4347594	-0.7832480

4

Energy = -3409.895249548

C	0.0591764	-4.6208516	-0.2928687
C	1.2163167	-4.3309843	-1.0883712
C	-0.2327788	-3.4869751	0.4647430
C	1.6103140	-3.0250534	-0.8017703
N	0.6959222	-2.5211294	0.1108769
C	-1.3012875	-3.2309719	1.5171924
C	-2.4768665	-2.4892170	0.9081717
C	2.8132542	-2.2089914	-1.2490968
C	2.4521325	-1.2896589	-2.4036862
C	-3.5535115	-0.7043881	-0.0130707
N	1.3534321	-0.4485889	-2.3634525
C	1.3280717	0.3924061	-3.4619017
C	3.1418092	-0.9907252	-3.5797287
C	2.4359188	0.0643488	-4.2443301
C	0.3589618	1.5594919	-3.5537495
H	-0.4938440	-5.5659354	-0.2704398
H	1.7167734	-5.0137814	-1.7834492
C	-1.7946767	-4.5844026	2.0812158
C	3.9411015	-3.1646981	-1.7069415
H	4.0681029	-1.4665835	-3.9174268
H	2.7258561	0.5529064	-5.1803748
C	0.7968694	2.6794875	-2.5697778
C	0.3966638	2.1375602	-4.9891033
C	-3.6681623	0.6930748	-0.5930561
C	-2.8779003	0.7498319	-1.8959519
N	-1.5414643	1.1136892	-1.9258854
C	-1.0573661	1.1114982	-3.2260095
C	-3.2403562	0.4383461	-3.2057740
C	-2.0972074	0.6659882	-4.0411047
C	-3.1277006	1.7497345	0.4006981
C	-5.1561372	1.0067529	-0.8759044
H	-4.2249289	0.0852874	-3.5317361
H	-2.0455310	0.5267537	-5.1264627
N	-2.3297359	-1.2252109	0.3674576
C	-3.8334743	-2.8054797	0.8347207
C	-4.5107864	-1.6823437	0.2542184
H	-4.2936424	-3.7408301	1.1696189
H	-5.5843794	-1.6013831	0.0553761
C	-0.7139869	-2.4205892	2.7010549
C	-1.5086735	-1.5012850	3.4114104
C	0.6017640	-2.6765912	3.1386314
C	-0.9832812	-0.8300544	4.5287981

C	1.1210197	-2.0116846	4.2653187
C	0.3294170	-1.0695573	4.9542792
H	-2.5478503	-1.3296040	3.1000467
H	1.1956865	-3.4251041	2.5990385
H	-1.6080032	-0.1104486	5.0793741
H	0.7588667	-0.5525632	5.8241719
C	3.3345332	-1.3899211	-0.0364369
C	3.6468111	-0.0237571	-0.1409311
C	3.5193834	-2.0397347	1.2025562
C	4.0980015	0.6939511	0.9784362
C	3.9844673	-1.3212859	2.3178255
C	4.2582798	0.0564096	2.2149338
C	-0.0917809	3.7318210	-2.2609824
C	2.0885276	2.6960259	-2.0125430
C	0.3021735	4.7568545	-1.3819243
C	2.4719825	3.7140615	-1.1257621
C	1.5790318	4.7389036	-0.7922002
C	-2.8587683	3.0535842	-0.0663349
C	-2.9359070	1.4597619	1.7635537
H	3.5163166	0.4869814	-1.1012778
H	3.3084352	-3.1162144	1.2825993
O	4.2727024	-1.9138272	3.5336545
H	4.6010893	0.5989346	3.1074440
H	-1.0858322	3.7523173	-2.7310835
H	2.8014190	1.9080976	-2.2867738
H	3.4792016	3.7040617	-0.6837456
H	1.8502749	5.5410721	-0.0919046
C	-2.4350980	2.4447216	2.6326766
C	-2.3568248	4.0360627	0.8050449
C	-2.1214567	3.7241310	2.1594878
H	-3.0582465	3.2874139	-1.1207853
H	-3.1753193	0.4607937	2.1464990
H	-2.2836901	2.2091952	3.6972397
H	-1.7130656	4.5013502	2.8201857
H	-2.5476636	-4.4123302	2.8728804
H	-0.9469487	-5.1468544	2.5154676
H	-2.2577886	-5.1991490	1.2854432
H	4.1987097	-3.8704160	-0.8956403
H	4.8480245	-2.5873820	-1.9689167
H	3.6278056	-3.7465971	-2.5951576
H	-0.3245468	2.9711312	-5.0832914
H	0.1413727	1.3598719	-5.7343925
H	1.4076528	2.5233466	-5.2203279
H	-5.2560815	2.0149471	-1.3198789
H	-5.7369637	0.9745309	0.0654069
H	-5.5894628	0.2700230	-1.5795275

O	-0.4803272	5.8635584	-1.1056159
O	-2.1307158	5.3460379	0.4466113
O	2.3604639	-2.2514933	4.8130149
H	4.3082365	1.7695699	0.8898274
H	0.8427035	-1.6500240	0.6289704
H	0.6166569	-0.4934534	-1.6578374
H	-1.0782446	1.5999474	-1.1519236
H	-1.4640011	-0.6805630	0.3955617
C	-1.8661420	5.7104843	-0.8965458
C	3.3951730	-2.8764396	4.0741372
H	-2.3204949	4.9996046	-1.6145432
H	-2.3038144	6.7148423	-1.0388384
H	3.9906215	-3.4503662	4.8060145
H	2.9953248	-3.5600495	3.2992098
H	1.6040413	0.5197689	2.6728652
C	0.8385791	1.2469693	2.3516330
Cl	1.4906644	2.8856030	2.4827877
H	-0.0998954	1.1696315	2.9246431
Cl	0.4265217	0.8319911	0.6335225

2bC4

Energy = -4002.328945938

C	-0.3388800	-5.7195226	-0.1179177
C	0.7509699	-5.7242428	-1.0473277
C	-0.6772082	-4.3878450	0.1238976
C	1.0532757	-4.3961417	-1.3513722
N	0.1682458	-3.6062736	-0.6408558
C	-1.6728811	-3.7682025	1.0890098
C	-2.7345247	-2.9689292	0.3437850
C	2.1610355	-3.8031131	-2.2019031
C	1.6204221	-2.8191920	-3.2297477
C	-3.6572375	-1.1519458	-0.6836676
N	1.2107905	-1.5521124	-2.8608623
C	0.9434648	-0.7729637	-3.9690500
C	1.5798838	-2.8681184	-4.6250300
C	1.1520473	-1.5824065	-5.0908603
C	0.4695749	0.6705984	-3.8675785
H	-0.8259851	-6.5975742	0.3191510
H	1.2515751	-6.6073767	-1.4577119
C	-2.3705959	-4.8977330	1.8853258
C	2.8970556	-4.9488997	-2.9327320
H	1.8531069	-3.7278116	-5.2456401
H	1.0192730	-1.2796352	-6.1349603
C	1.1539629	1.4401308	-2.7059682
C	0.8104842	1.4043411	-5.1856576
C	-3.7418047	0.2950364	-1.1465781
C	-2.9290434	0.5352088	-2.4043918
N	-1.5713375	0.2854082	-2.4442439
C	-1.0331501	0.7052876	-3.6451856
C	-3.2761183	1.1112363	-3.6271498
C	-2.0807785	1.2170842	-4.4111947
C	-3.2614875	1.2485112	-0.0184815
C	-5.2210989	0.6423345	-1.4378201
H	-4.2833250	1.4122937	-3.9326322
H	-1.9981251	1.6248328	-5.4242286
N	-2.5225616	-1.6692552	-0.0810350
C	-4.0386213	-3.3054938	-0.0246915
C	-4.6174323	-2.1652906	-0.6686174
H	-4.5304303	-4.2667896	0.1583797
H	-5.6343115	-2.0903641	-1.0666977
C	-0.9251484	-2.8827034	2.1200775
C	-1.5847280	-1.8419205	2.8030621
C	0.4136428	-3.1758274	2.4478526
C	-0.9047711	-1.0981386	3.7821584

C	1.0949902	-2.4186480	3.4139279
C	0.4343670	-1.3738325	4.0888813
H	-2.6322936	-1.6121444	2.5676821
H	0.9024549	-4.0116329	1.9316983
H	-1.4262367	-0.2847912	4.3092827
H	0.9870336	-0.7940224	4.8411643
C	3.1928615	-3.0480780	-1.3206355
C	4.1258276	-2.1812000	-1.9252669
C	3.2050727	-3.2061781	0.0745482
C	5.0439646	-1.4748982	-1.1345554
C	4.0987881	-2.4652439	0.8627335
C	5.0338305	-1.6065512	0.2619257
C	0.4917933	2.5698721	-2.1748411
C	2.4130111	1.0839602	-2.1915587
C	1.0594831	3.3057420	-1.1232569
C	2.9729455	1.8157661	-1.1290473
C	2.3076305	2.9212576	-0.5877919
C	-2.6040297	2.4518164	-0.3427548
C	-3.5601269	0.9713853	1.3304112
H	4.1155703	-2.0499299	-3.0175601
H	2.4617614	-3.8724921	0.5251783
O	4.1164234	-2.4701722	2.2501626
H	5.7259485	-1.0343797	0.8963845
H	-0.4771772	2.8501559	-2.6095255
H	2.9519576	0.2149820	-2.5885667
H	3.9378168	1.4986778	-0.7065616
H	2.7291792	3.4968552	0.2474082
C	-3.2093727	1.8913174	2.3329976
C	-2.2404807	3.3629006	0.6648623
C	-2.5462360	3.0851202	2.0112899
H	-2.4020974	2.6607913	-1.4012411
H	-4.0800564	0.0377554	1.5890506
H	-3.4495816	1.6730242	3.3847372
H	-2.2591746	3.8105389	2.7856243
H	-3.1054819	-4.4660697	2.5908077
H	-1.6234749	-5.4757364	2.4618596
H	-2.8999134	-5.5922865	1.2048334
H	3.3410165	-5.6459133	-2.1969996
H	3.7109637	-4.5434985	-3.5627464
H	2.1969066	-5.5149310	-3.5773692
H	0.4844709	2.4602244	-5.1307360
H	0.3025807	0.9291932	-6.0471493
H	1.9024112	1.3776504	-5.3619716
H	-5.3116185	1.7040975	-1.7349630
H	-5.8384812	0.4777562	-0.5351833
H	-5.6115422	0.0113440	-2.2595365

O	0.4947990	4.4294144	-0.5507835
O	-1.6115253	4.5700173	0.4303475
O	2.4000619	-2.6421308	3.8105240
H	5.7710108	-0.7983760	-1.6093096
H	0.2207644	-2.5755521	-0.5632128
H	1.1201425	-1.2186309	-1.8881300
H	-0.9952554	-0.0327696	-1.6456482
H	-1.6198132	-1.1766419	0.0120623
C	-0.8587693	4.7932527	-0.7476790
C	3.3174603	-3.3631413	3.0227101
C	2.1113706	0.3972162	2.1008439
N	1.8872485	-0.4766316	1.0773156
C	0.6961495	-0.1566415	0.5659823
C	0.0971417	1.0385684	1.2819093
N	1.1276456	1.3173375	2.2674410
O	0.1098296	-0.7571489	-0.3887097
N	3.2216462	0.3156826	2.8416521
C	0.9453666	2.2853085	3.3373518
C	1.0014532	3.7332222	2.8425971
C	0.5396897	4.7469173	3.8922100
C	0.4239584	6.1672052	3.3276446
C	-0.0443898	7.2060320	4.3534217
C	-0.1812615	8.6157131	3.7699990
H	-0.8742485	0.7913683	1.7572692
H	-0.0646862	1.8763546	0.5775614
H	3.3476914	0.8909548	3.6739658
H	3.7454106	-0.5690921	2.7721141
H	-0.0429811	2.0846239	3.8080044
H	1.7054049	2.0980049	4.1227605
H	0.3624753	3.8313423	1.9418649
H	2.0349895	3.9675784	2.5092315
H	-0.4513093	4.4324439	4.2925321
H	1.2309928	4.7386937	4.7649666
H	-0.2800344	6.1497137	2.4654046
H	1.4069770	6.4781871	2.9070328
H	-1.0201061	6.8811866	4.7794607
H	0.6666527	7.2211731	5.2098954
H	-0.9144852	8.6350742	2.9358910
H	0.7869502	8.9797851	3.3661182
H	-0.5210389	9.3455097	4.5328694
H	-1.3031387	4.2903573	-1.6271986
H	-0.8735929	5.8878236	-0.8975571
H	4.0003370	-3.8561074	3.7395489
H	2.8324397	-4.1242959	2.3848214
H	-2.0432264	-2.4933358	-2.2936100
C	-1.9177022	-2.8837870	-3.3155260

Cl	-1.8128046	-4.6684490	-3.2166435
H	-0.9993573	-2.5114797	-3.7989564
Cl	-3.3172432	-2.3278863	-4.2909028

ii

Energy = -4018.684515082

C	-1.2165260	3.7904400	-1.1867187
C	-2.3580983	4.5521167	-0.9292258
H	-2.4233934	5.6441449	-0.9757471
C	-3.4143634	3.6510125	-0.5739647
H	-4.4365281	3.9245714	-0.2921079
C	-2.8994091	2.3551149	-0.6198839
C	-3.4860434	1.0274672	-0.1699708
C	-2.9747023	0.6784026	1.2520617
C	-2.2433335	1.5982686	2.0252132
H	-2.0674654	2.6061264	1.6317585
C	-1.7307747	1.2384119	3.2810617
H	-1.1376782	1.9638652	3.8564393
C	-1.9591381	-0.0382614	3.8100553
H	-1.5516952	-0.3474446	4.7807371
C	-2.7363648	-0.9375028	3.0604578
C	-3.2343663	-0.5976799	1.7947587
H	-3.8194744	-1.3455842	1.2398594
C	-3.1087415	-4.4667575	4.9568601
C	-2.8673403	-4.7529028	6.3158926
H	-2.0254199	-4.2679579	6.8315277
C	-3.7055878	-5.6526638	6.9929010
H	-3.5215608	-5.8784391	8.0538550
C	-4.7752624	-6.2616301	6.3144671
H	-5.4315767	-6.9662034	6.8472621
C	-5.0118560	-5.9754557	4.9567516
H	-5.8494190	-6.4558144	4.4293216
C	-4.1810323	-5.0774624	4.2713064
H	-4.3637070	-4.8528659	3.2104551
C	-5.0295462	1.1395377	-0.1278400
H	-5.3393060	1.9068188	0.6070962
H	-5.4762269	0.1718470	0.1688909
H	-5.4293979	1.4247782	-1.1199925
C	-3.0794627	-0.0785302	-1.1367753
C	-3.6262049	-0.4829206	-2.3547474
H	-4.4938151	-0.0304091	-2.8480215
C	-2.8543297	-1.5899404	-2.8355044
H	-3.0128933	-2.1385845	-3.7705904
C	-1.8493745	-1.8443045	-1.9018241
C	-0.7132036	-2.8630617	-1.9077274
C	-0.1965488	-3.0810013	-0.4648964
O	5.8301106	2.4221686	0.0537802
O	4.6634937	4.2650774	0.8578344

C	-1.1107349	-3.4537399	0.5427173
H	-2.1776011	-3.5981401	0.3189108
C	-0.6686377	-3.6562554	1.8576042
C	0.6736560	-3.4569104	2.2201401
H	0.9823749	-3.5869609	3.2651393
C	1.5843112	-3.1072934	1.2141538
H	2.6460169	-2.9720906	1.4700506
C	1.1597834	-2.9344565	-0.1138261
H	1.8933954	-2.6680882	-0.8836350
C	-1.2297256	-4.2139819	-2.4582517
H	-2.0581360	-4.5951061	-1.8324121
H	-0.4149134	-4.9635824	-2.4613317
H	-1.6016316	-4.0974754	-3.4939995
C	0.3855644	-2.3458301	-2.8164477
C	1.0018257	-2.8959266	-3.9396827
H	0.7665421	-3.8650071	-4.3919422
C	1.9915708	-1.9622763	-4.3926493
H	2.6638235	-2.0907804	-5.2471407
C	1.9577225	-0.8608993	-3.5365601
C	2.8566746	0.3564612	-3.4304154
C	3.7097086	0.2674464	-2.1383071
C	3.9919740	-0.9784046	-1.5458327
H	3.5694528	-1.8939968	-1.9828614
C	4.8376285	-1.0514032	-0.4248458
H	5.0531146	-2.0275594	0.0355511
C	5.4117926	0.1069620	0.1145214
H	6.0708146	0.0693866	0.9933866
C	5.1530591	1.3548633	-0.4894144
C	4.2991753	1.4325358	-1.6059098
H	4.1020711	2.3918207	-2.1009637
C	5.4468702	3.7621794	-0.2017705
H	6.3791797	4.3539813	-0.1942120
H	4.9443427	3.8689567	-1.1830559
C	3.8371095	0.3648728	-4.6278009
H	4.4749334	-0.5386179	-4.6034056
H	4.4881258	1.2577736	-4.5792414
H	3.2867987	0.3781882	-5.5882098
C	2.0386478	1.6389076	-3.4487484
C	1.7668091	2.5369103	-4.4809367
H	2.0881645	2.4317702	-5.5226013
C	1.0119073	3.6237838	-3.9303276
H	0.6529691	4.5065698	-4.4701157
C	0.8349006	3.3715309	-2.5709348
C	0.2184168	4.2096000	-1.4606858
C	1.0863537	4.0644053	-0.1796723
C	2.4893356	4.1801996	-0.2804205

H	2.9425309	4.3774029	-1.2627018
C	3.2953068	4.0714033	0.8670835
C	2.7119714	3.8301364	2.1266798
H	3.3652243	3.7261713	3.0043755
C	1.3178635	3.7387039	2.2283981
H	0.8556656	3.5568278	3.2096234
C	0.5098277	3.8613312	1.0861570
H	-0.5809644	3.7972829	1.1748124
C	0.2316770	5.7005252	-1.8768698
H	1.2624394	6.0240514	-2.1140570
H	-0.1496747	6.3303409	-1.0509749
H	-0.4060527	5.8652366	-2.7664500
N	-1.5758390	2.4668900	-1.0049289
H	-0.9593642	1.6717646	-1.1761145
N	-1.9821934	-0.8951005	-0.9033393
H	-1.4934371	-0.9485020	-0.0047809
N	0.9657234	-1.1080559	-2.6059079
H	0.7638792	-0.5141040	-1.7984719
N	1.4301254	2.1459766	-2.3109513
H	1.5943696	1.7936621	-1.3641140
O	-3.0944167	-2.1854106	3.5713063
O	-0.8718407	-2.7452515	4.9525626
O	-1.5961335	-4.1316618	2.7854824
P	-2.0163657	-3.2976168	4.1499592
H	2.6416615	1.3587397	1.2792423
C	2.1677793	0.3702589	1.4073854
Cl	0.6060459	0.4233268	0.4856412
Cl	1.8927908	0.0739667	3.1294383
H	2.7634274	-0.4494101	0.9728413

2b<1i

Energy = -4611.124955087

C	-1.4648713	3.3610792	-2.0614014
C	-2.6821958	4.0433884	-2.0908527
H	-2.8264578	5.0873776	-2.3871099
C	-3.7007574	3.1309593	-1.6681302
H	-4.7715312	3.3439518	-1.5856576
C	-3.0832449	1.9112321	-1.3901204
C	-3.6500864	0.6025785	-0.8688078
C	-2.9856659	0.1973179	0.4727414
C	-2.2360931	1.1052747	1.2472129
H	-2.0609289	2.1216609	0.8722772
C	-1.7140836	0.7269381	2.4963035
H	-1.1296396	1.4508679	3.0829958
C	-1.9423238	-0.5571989	3.0116032
H	-1.5532875	-0.8697884	3.9898169
C	-2.7008611	-1.4516423	2.2418234
C	-3.2071764	-1.0960591	0.9863499
H	-3.7979166	-1.8299267	0.4203929
C	-3.1210417	-5.1189480	3.8526828
C	-2.5810606	-5.6974856	5.0192579
H	-1.5497800	-5.4593321	5.3180966
C	-3.3689843	-6.5708185	5.7855503
H	-2.9528227	-7.0245983	6.6971441
C	-4.6848575	-6.8626270	5.3875248
H	-5.3008254	-7.5471526	5.9901862
C	-5.2198591	-6.2832069	4.2217864
H	-6.2506579	-6.5134466	3.9141320
C	-4.4422847	-5.4091414	3.4489960
H	-4.8599465	-4.9538551	2.5393648
C	-5.1616259	0.7948340	-0.5925130
H	-5.3131593	1.5788620	0.1736486
H	-5.6081196	-0.1492003	-0.2281945
H	-5.6925214	1.1008546	-1.5146716
C	-3.4734993	-0.5080102	-1.8983580
C	-4.3441138	-1.0091807	-2.8700260
H	-5.3600868	-0.6525237	-3.0694018
C	-3.6669971	-2.0757705	-3.5462629
H	-4.0716838	-2.6969227	-4.3524321
C	-2.3959684	-2.1993127	-2.9743424
C	-1.2691139	-3.1910665	-3.2273112
C	-0.7439912	-3.7387466	-1.8754504
O	5.2760661	1.8838572	-0.1419253
O	4.1565150	3.8143511	0.5225567

C	-1.6336476	-3.9440081	-0.8055079
H	-2.7007352	-3.7029992	-0.9051150
C	-1.1608586	-4.4579353	0.4055954
C	0.1899630	-4.7816920	0.5956588
H	0.5332099	-5.1704974	1.5632841
C	1.0718081	-4.5918022	-0.4785045
H	2.1356141	-4.8472200	-0.3578931
C	0.6110848	-4.0827248	-1.7026301
H	1.3072319	-3.9553681	-2.5440275
C	-1.8200185	-4.3828479	-4.0439370
H	-2.6635176	-4.8548728	-3.5059056
H	-1.0291736	-5.1417057	-4.1942419
H	-2.1753740	-4.0460231	-5.0373287
C	-0.1169911	-2.5576219	-3.9898623
C	0.5572826	-2.9771735	-5.1374806
H	0.2641277	-3.8077155	-5.7879123
C	1.7013262	-2.1326792	-5.2986454
H	2.4337897	-2.1795972	-6.1108382
C	1.7006980	-1.2151961	-4.2462613
C	2.6552860	-0.0782531	-3.9246740
C	3.2599486	-0.1986347	-2.5011672
C	3.1710854	-1.3706681	-1.7303248
H	2.6153976	-2.2355112	-2.1114220
C	3.7735170	-1.4312547	-0.4603901
H	3.6793563	-2.3468052	0.1423006
C	4.4696720	-0.3322640	0.0558211
H	4.9371730	-0.3576520	1.0501402
C	4.5557277	0.8497069	-0.7092966
C	3.9633991	0.9098294	-1.9810317
H	4.0364168	1.8180524	-2.5953426
C	4.9956242	3.2333063	-0.4592192
H	5.9577494	3.7709152	-0.3856248
H	4.5802296	3.3468887	-1.4783656
C	3.8246728	-0.1186759	-4.9373592
H	4.3659087	-1.0801327	-4.8544516
H	4.5339418	0.7064977	-4.7407503
H	3.4479203	-0.0165311	-5.9733133
C	1.9519232	1.2680601	-4.0328972
C	2.0009968	2.2607225	-5.0105259
H	2.5436350	2.2004880	-5.9593881
C	1.2263772	3.3697972	-4.5397790
H	1.0735736	4.3210844	-5.0594686
C	0.7192719	3.0338724	-3.2827360
C	-0.0471094	3.8654356	-2.2686111
C	0.7028004	3.8940699	-0.9071708
C	2.1073223	3.7797737	-0.8593320

H	2.6492041	3.6096758	-1.7986368
C	2.7884630	3.8931913	0.3675749
C	2.0703230	4.1444081	1.5539049
H	2.6252612	4.2394278	2.4979246
C	0.6754792	4.2691021	1.5030390
H	0.1135595	4.4679724	2.4281676
C	-0.0105978	4.1347362	0.2845314
H	-1.1049297	4.2359057	0.2452740
C	-0.1089683	5.3273115	-2.7733750
H	0.9135874	5.7214200	-2.9243682
H	-0.6216018	5.9667395	-2.0308662
H	-0.6619628	5.3832206	-3.7306889
N	-1.7345345	2.0699927	-1.6467705
H	-1.0311522	1.3381589	-1.4497954
N	-2.3056011	-1.2367018	-1.9892406
H	-1.4592427	-1.0454254	-1.4240699
N	0.5831819	-1.4813207	-3.4780985
H	0.3786612	-1.0267017	-2.5720174
N	1.1582577	1.7495196	-3.0058746
H	0.9224797	1.2008512	-2.1621578
O	-3.0571619	-2.6970901	2.7727845
O	-0.7046730	-3.7562078	3.4661584
O	-2.1072575	-4.6997223	1.4120202
P	-2.0826126	-4.0123075	2.9017441
C	0.5540194	-0.2418701	0.0482279
C	1.1671286	-1.0646123	1.9457216
C	1.3999788	0.8250246	0.7113585
H	2.2648436	1.1094795	0.0805310
H	0.7978813	1.7373418	0.9095335
C	2.5859784	0.7554130	2.9807096
C	1.7397229	1.5192625	4.0065051
H	3.3106426	1.4384139	2.4904148
H	3.1950527	-0.0317287	3.4745893
N	0.4322522	-1.3263262	0.8201405
N	1.7949689	0.1428119	1.9264710
N	1.2682861	-1.9349507	2.9501626
H	1.7383897	-1.6601403	3.8126137
H	0.5696807	-2.7085114	3.0142098
O	0.0397686	-0.0714343	-1.1034817
H	1.0378808	0.8139664	4.5028957
H	1.1100052	2.2534783	3.4606636
C	2.5858219	2.2445381	5.0546861
H	3.3050812	2.9214475	4.5400910
H	3.2107244	1.5064972	5.6059740
C	1.7473192	3.0527142	6.0508355
H	1.0200008	2.3750178	6.5532031

H	1.1308784	3.7934029	5.4920534
C	2.5806213	3.7809940	7.1123228
H	3.3055820	4.4564621	6.6050888
H	3.1977110	3.0365895	7.6637824
C	1.7327506	4.5837492	8.1038306
H	1.0213620	3.9275797	8.6485825
H	1.1333615	5.3599264	7.5830544
H	2.3611126	5.0969563	8.8598106
H	-0.7745782	0.9697413	-4.1123253
C	-1.5747708	0.6320493	-4.7880663
Cl	-0.8126350	0.1679247	-6.3441382
Cl	-2.7525242	1.9708216	-4.9595228
H	-2.1125571	-0.2500474	-4.4012347

2b

Energy = -592.3662703110

C	-2.2261080	-2.5514426	-0.6618734
N	-2.1922095	-3.8512758	-1.0015482
N	-1.4506451	-1.7213302	-1.4230601
C	-1.2962248	-3.9601531	-2.0456764
C	-0.7175782	-2.5560538	-2.3606779
O	-0.9872424	-4.9898571	-2.6482873
C	-1.1417852	-0.3268540	-1.1445339
N	-2.9607382	-2.0931761	0.3703870
H	-3.6043303	-2.7410364	0.8241936
H	-3.0844762	-1.0966636	0.5425362
H	-0.9014449	-2.2697462	-3.4178343
H	0.3797541	-2.5365664	-2.1810744
H	-0.8551607	0.1487031	-2.1051543
C	-0.0327672	-0.1329613	-0.0999618
C	0.3115268	1.3416181	0.1317662
C	1.4288822	1.5513409	1.1600170
C	1.8011952	3.0232857	1.3775210
C	2.9301661	3.2198730	2.3939693
H	-2.0730913	0.1895258	-0.8234592
H	0.8748262	-0.6822913	-0.4333178
H	-0.3499605	-0.6035590	0.8564683
H	0.6102905	1.8052578	-0.8357481
H	-0.6015986	1.8883292	0.4604306
H	2.3336957	0.9881937	0.8358291
H	1.1251558	1.0995019	2.1317466
H	2.0941692	3.4707666	0.4012145
H	0.8975550	3.5838999	1.7069885
H	3.8559539	2.6979345	2.0714870
H	2.6514906	2.8129147	3.3890335
H	3.1806999	4.2918222	2.5286187

Computed thermodynamic parameters of complexes **2b**⊂**3io** and **2b**⊂**3oo**

Frequency calculations at BP86 def2-SVP level of theory have been performed using ORCA version 4.1.2.⁴ The D4 dispersion correction and RI approximation were applied. The optimization of the geometries was done in CH₂Cl₂ after the application of the conductor-like polarizable continuum model (CPCM) implemented in ORCA.

Table S 1. Computed thermodynamic parameters at 288 K for the formation of the 1:1 complexes **2b**⊂**3io** and **2b**⊂**3oo**. ΔH enthalpy (kcal·mol⁻¹), $T\Delta S$ entropy (kcal·mol⁻¹) and free energy ΔG (kcal·mol⁻¹).

	ΔH	$T\Delta S$	ΔG
2b ⊂ 3io	-40.39	-16.92	-23.47
2b ⊂ 3oo	-37.96	-18.18	-19.78

References

¹ M. Ciardi, F. Tancini, G. Gil-Ramírez, E. C. Escudero Adán, C. Massera, E. Dalcanale and P. Ballester, Switching from Separated to Contact Ion-Pair Binding Modes with Diastereomeric Calix[4]pyrrole Bis-phosphonate Receptors, *J. Am. Chem. Soc.*, 2012, **134**, 13121-13132.

² T. Guinovart, D. Hernández-Alonso, L. Adriaenssens, P. Blondeau, M. Martínez-Belmonte, F. X. Rius, F. J. Andrade and P. Ballester, Recognition and Sensing of Creatinine, *Angew. Chem., Int. Ed.*, 2016, **55**, 2435-2440.

³ A. F. Sierra, D. Hernández-Alonso, M. A. Romero, J. A. González-Delgado, U. Pischel and P. Ballester, Optical Supramolecular Sensing of Creatinine, *J. Am. Chem. Soc.*, 2020, **142**, 4276-4284.

⁴ F. Neese, The ORCA program system, *WIREs Computational Molecular Science*, 2012, **2**, 73-78.