

## **Assembly encapsulation of BSA and CCCH-ZAP in the sodium alginate/*Atractylodes macrocephala* system**

Shuxin Zhang<sup>a</sup>, Hai Fan<sup>a\*</sup>, Chunrong Yi<sup>a</sup>, Ying Li<sup>a\*</sup>, Kunmei Yang<sup>b</sup>, Shenglong Liu<sup>b</sup>, Ziqiang Cheng<sup>b\*</sup>, Jianchao Sun<sup>c</sup>

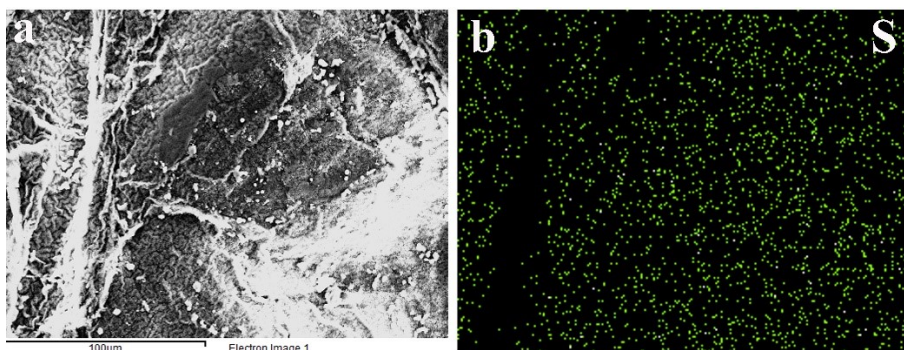
<sup>a</sup> College of Chemistry and Material Science, Shandong Agricultural University, Tai'an, 271018, Shandong, PR China

<sup>b</sup> College of Veterinary Medicine, Shandong Agricultural University, Tai'an, 271018, Shandong, PR China

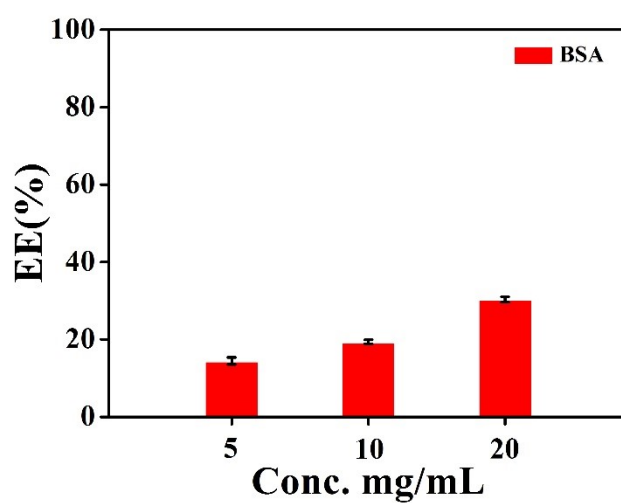
<sup>c</sup> School of Environment and Materials Engineering, Yantai University, Yantai, 264005, Shandong, PR China

\*Corresponding authors:

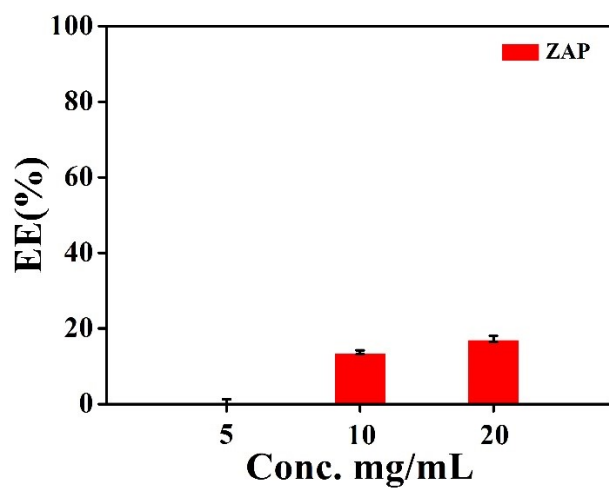
E-mail address: fanhai@sdau.edu.cn (H. Fan); ly8049@sdau.edu.cn (Y. Li); czqsd@126.com (Z. Cheng).



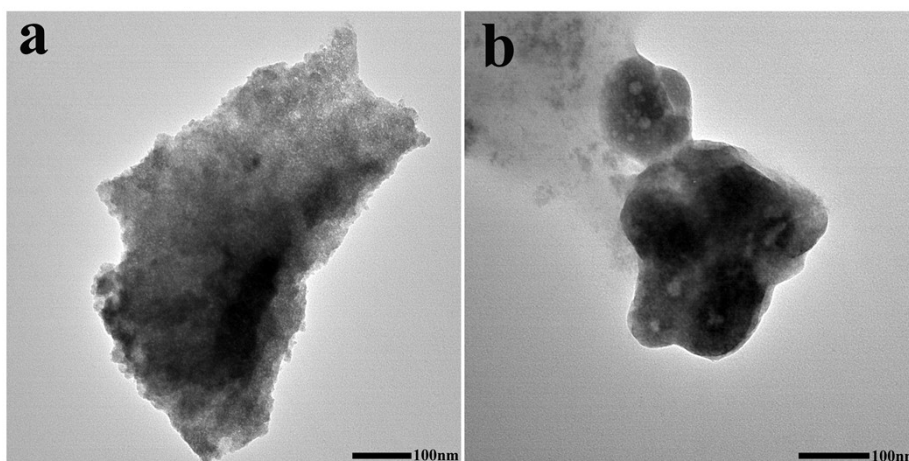
**Fig. S1.** (a) SEM image and (b) the corresponding element mappings of S for SA/AM-BSA composite.



**Fig. S2.** EE of BSA with different concentrations of SA



**Fig. S3.** EE of CCCH-ZAP with different concentrations of SA



**Fig. S4.** TEM images of different composite: (a) SA/AM composite, (b)SA/AM-ZAP composite.