

SUPPLEMENTARY DATA

Spatial and temporal variability of contaminants of emerging concern in a drinking water source

Rama Pulicharla^{1,3}, Francois Proulx¹, Sonja Behmel², Jean-B. Sérodes^{1,4} and Manuel J. Rodriguez^{1,*}

¹ École supérieure d'aménagement du territoire et de développement régional, Pavillon Félix-Antoine-Savard, bureau 1616, 2325, rue des Bibliothèques, Université Laval, Québec (QC) G1V 0A6, Canada, rama.pulicharla.1@ulaval.ca (R.P.); Francois.Proulx@esad.ulaval.ca (F.P.)

² AGIRO, 433 Delage, Québec (QC) G3G 1H4, Canada, sonja.behmel@apel-maraisdunord.org

³ Department of Civil Engineering, Lassonde School of Engineering, York University, North York, Toronto, Ontario, M3J 1P3, Canada, ramapuli@yorku.ca

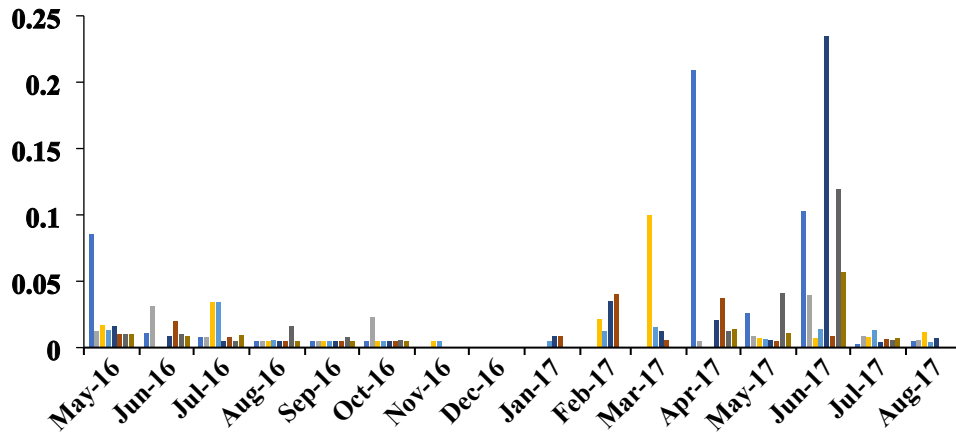
⁴ Département de Génie civil et génie des eaux, Pavillon Pouliot, Université Laval, G1V 0A6 Québec (QC) G1V 0A6, Canada, jean-baptiste.serodes.1@ulaval.ca

* Corresponding author: Email: manuel.rodriguez@esad.ulaval.ca, Tel. (418) 656-2131 p. 408933

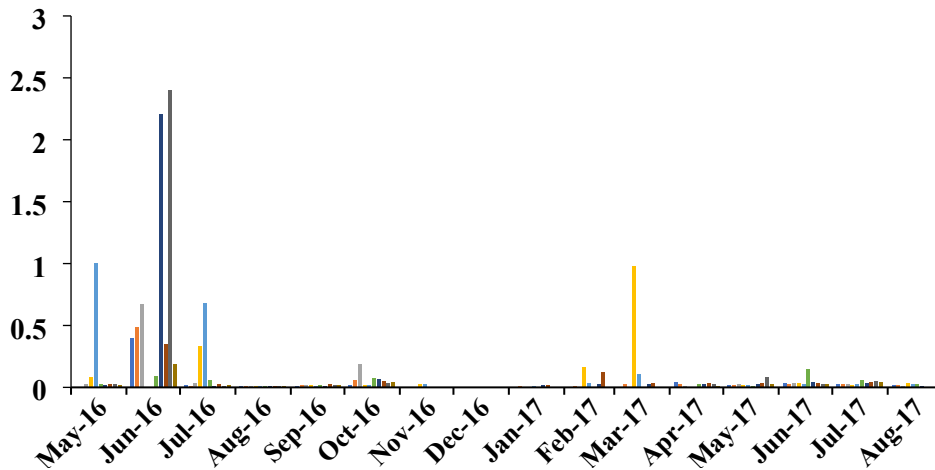
Table S1: Physicochemical properties of selected contaminants of emerging interest

Contaminant	Classification	LogP	pKa	solubility (mg/L)
Acetaminophen	Analgesics and antipyretics	0.91	-4.4	4150
Caffeine	Central nervous system stimulant	-0.07	10.4	21600
Carbamazepine	Anti-convulsant	2.45	15.96	17.7
Drospirenone	Hormone	3.37	-5	1.81
Ibuprofen	Nonsteroidal anti-inflammatory	3.97	5.3	21
Salicylic acid	Keratolytic agents, Metabolite of acetylsalicylic acid (analgesic), a natural plant substance	2.26	2.97	2240
Sulfamethoxazole	Antibiotic	0.89	6.16	610

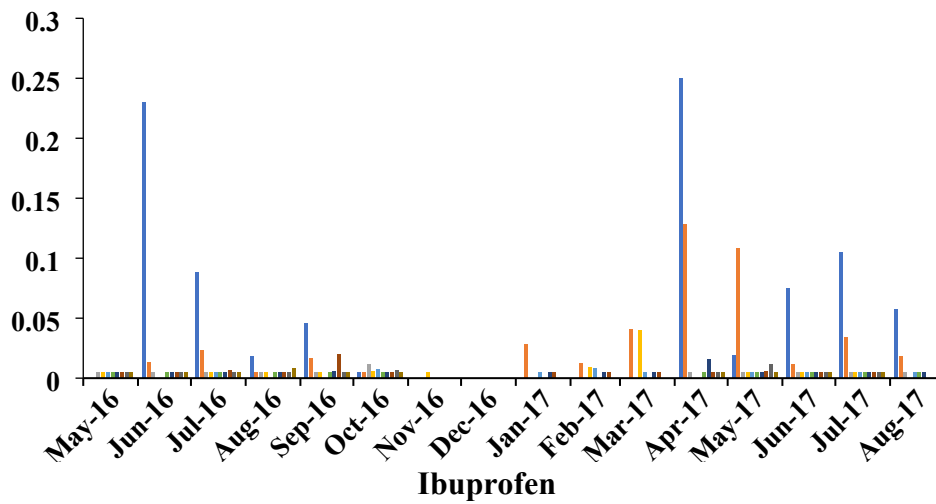
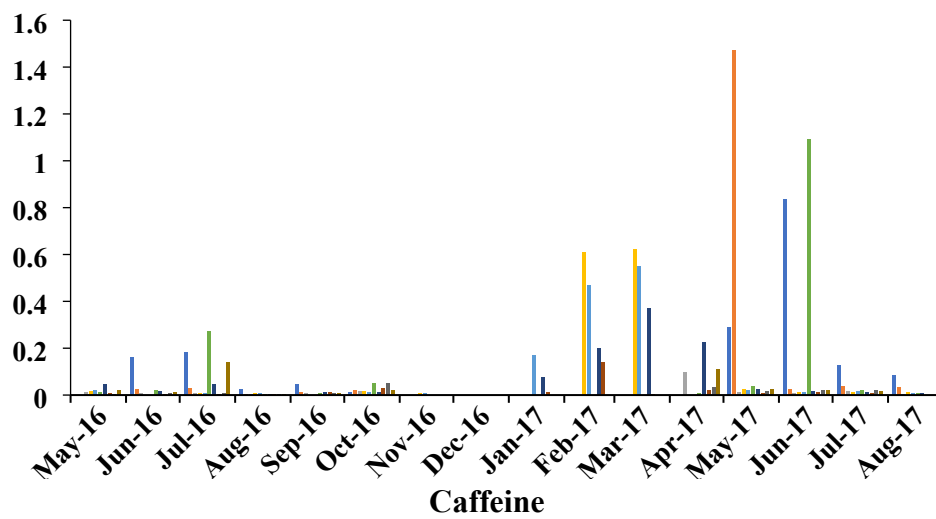
- Exut Traite Stoneham
- Riv Hurons Exu Lac StC
- Centre Lac St C nord
- Centre Lac St C sud
- Aval Barrage Lac StC
- Riv Jaune
- Riv Nelson
- Riv St Cha Barrage Prise eau



Acetaminophen



Salicylic acid



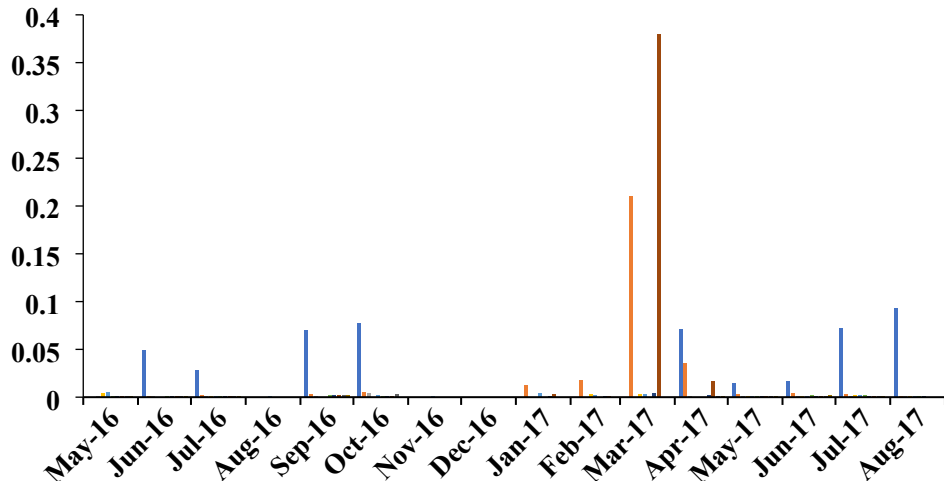


Figure S1: Temporal variations of the selected contaminants of emerging concern Sulfamethoxazole