

Selective detection of methanol vapour from a multicomponent gas mixture using a CNPs/ZnO@ZIF-8 based room temperature solid-state sensor

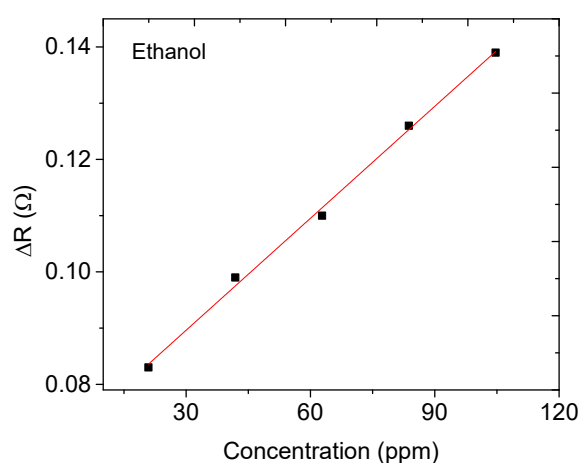
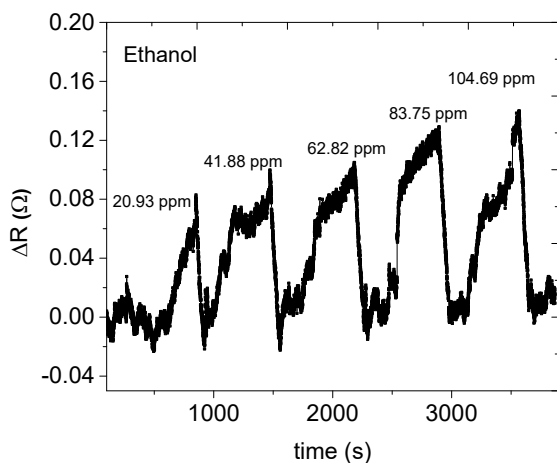
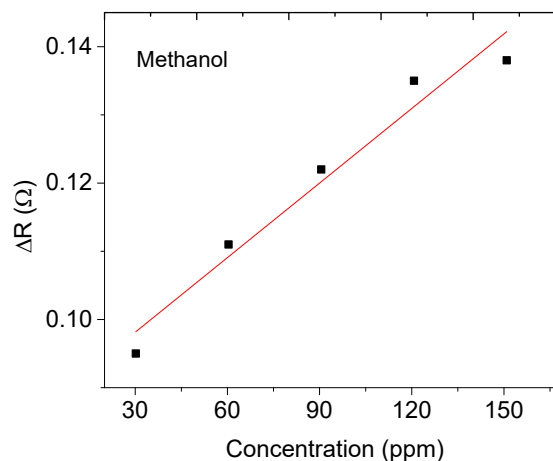
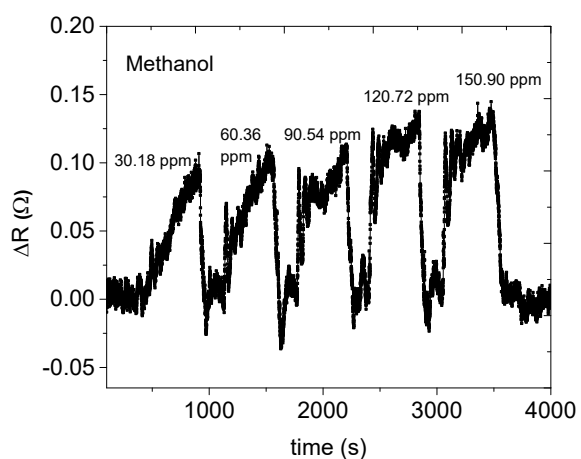
Lesego Malepe,^a Derek Tantoh Ndinteh,^a Patrick Ndungu^{*+b} and Messai Adenew Mamo^{*a}

^a Department of Chemical Science, University of Johannesburg, PO Box 17011, Doornfontein, 2028 Johannesburg, South Africa

^b Department of Chemistry, University of Pretoria, Private Bag X20, Hatfield, 0028, Pretoria, South Africa

Supporting information

(a) Response of sensor B (Sensor-based on only CNPs)



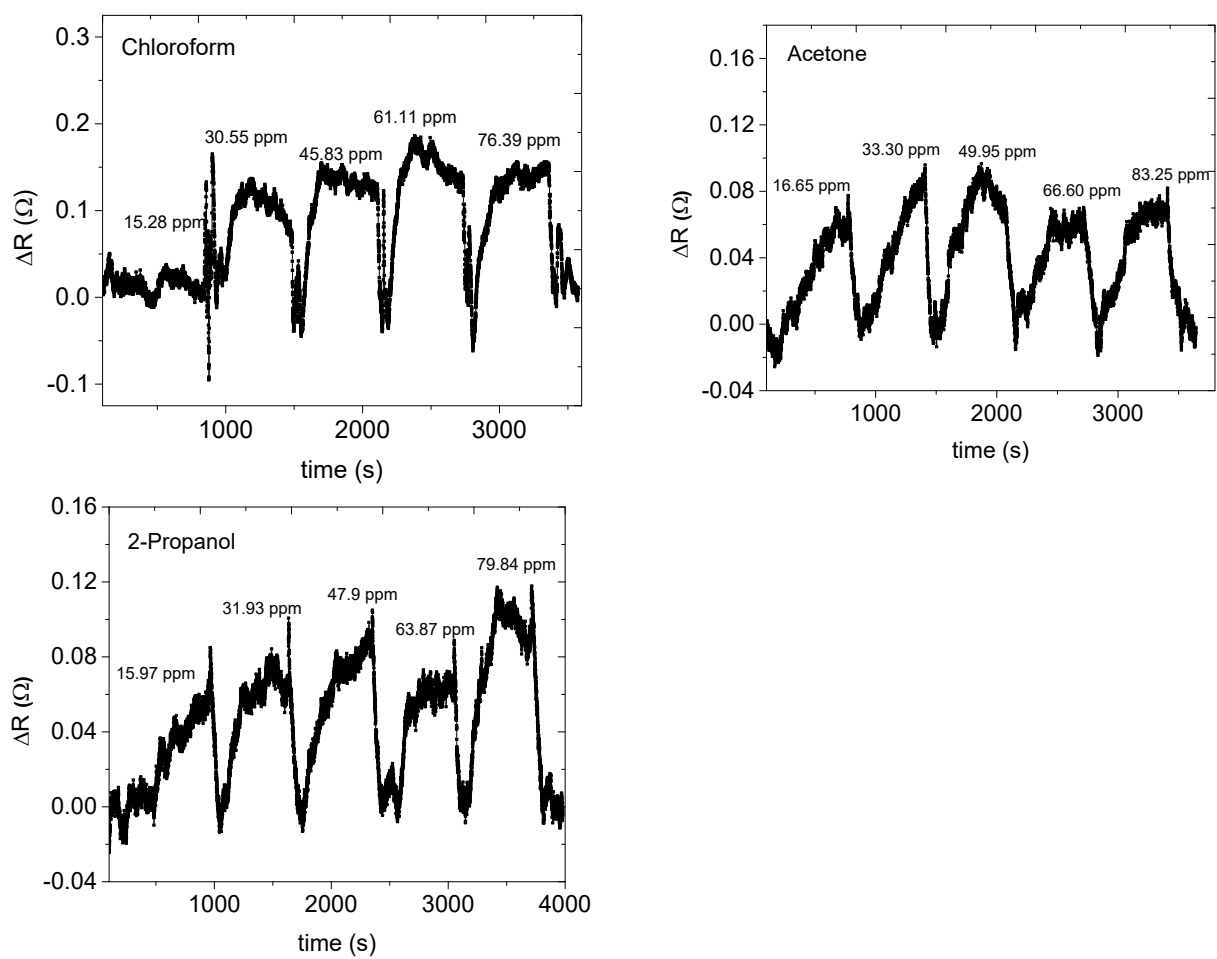
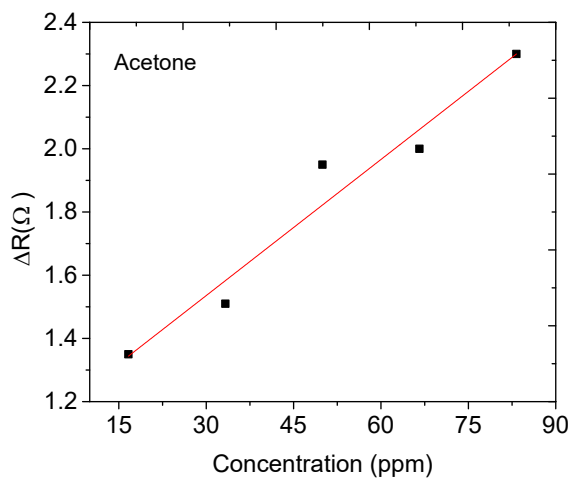
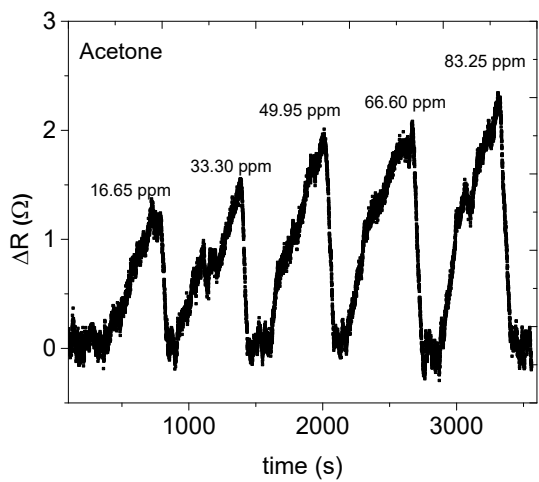
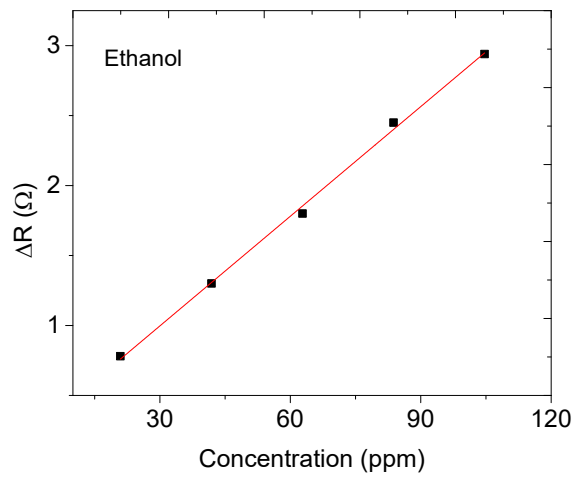
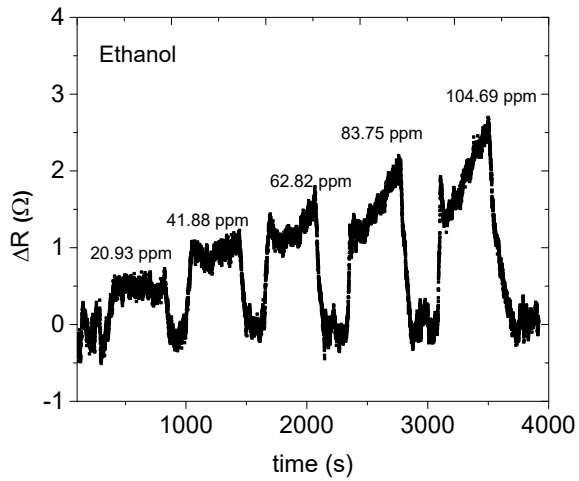
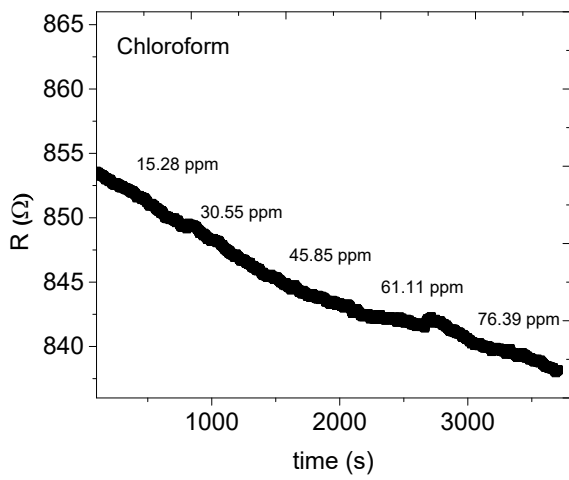
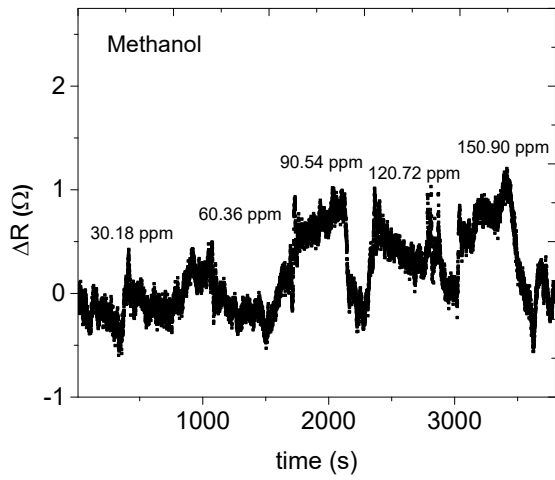


Fig. S1: Dynamic response and recovery curve of the sensor based on CNP only (Sensor B).

(b) Sensor C CNPs/ZnO@ZIF-8 (15: 15)mg



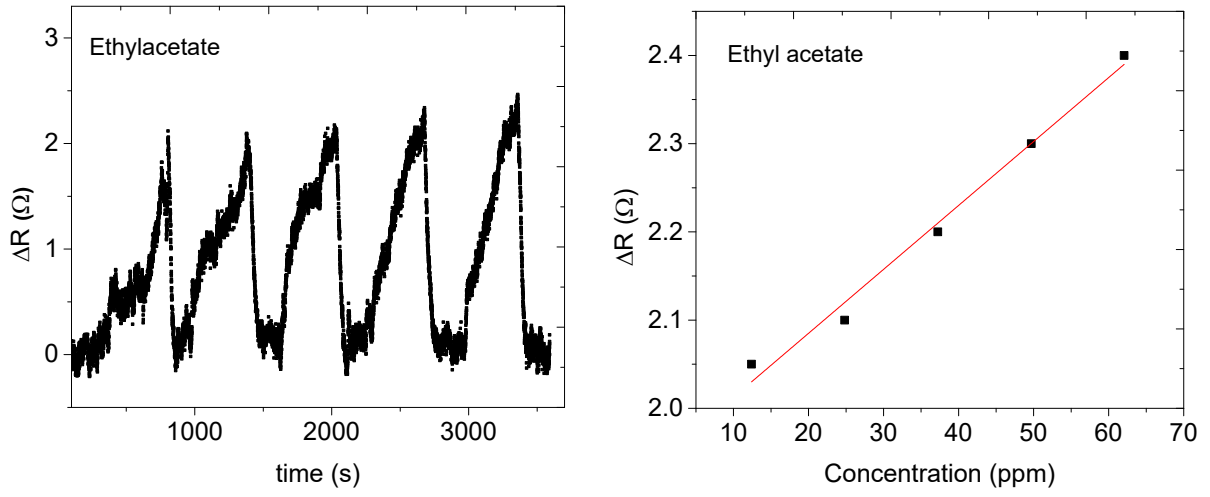
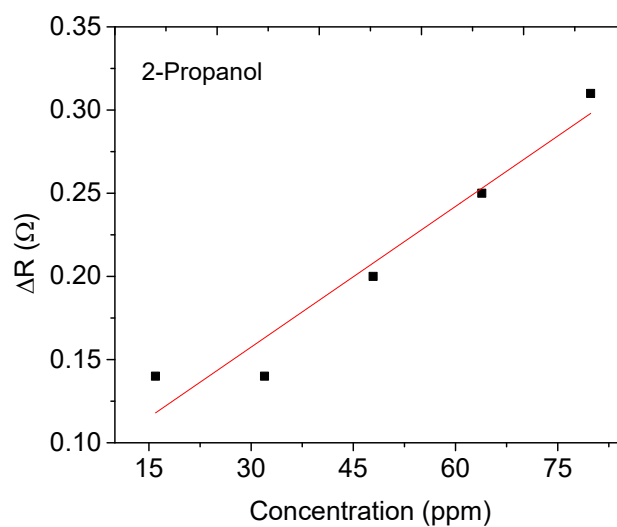
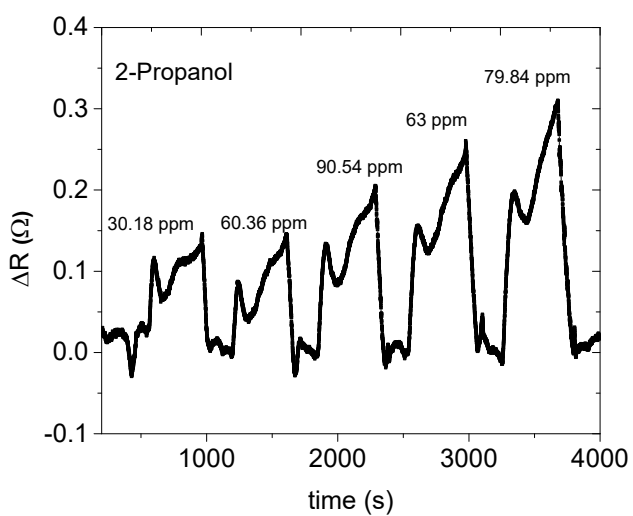
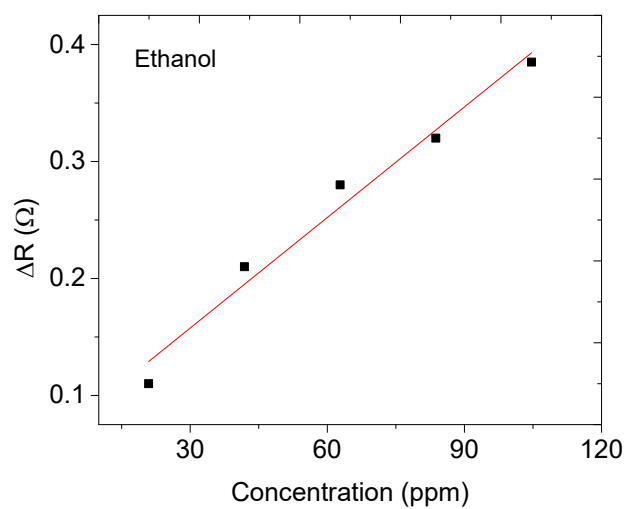
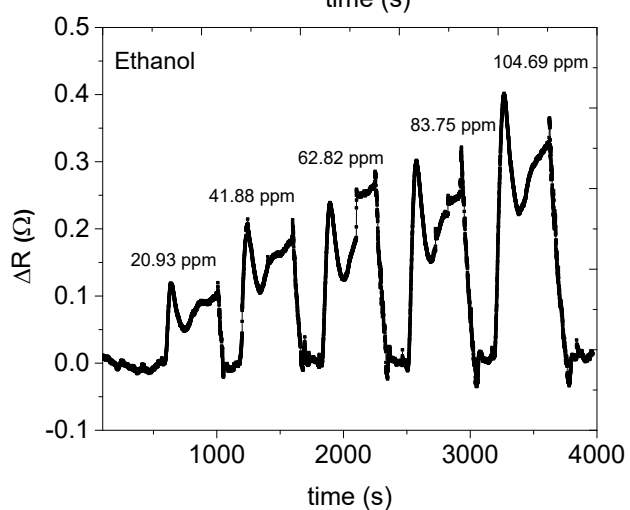
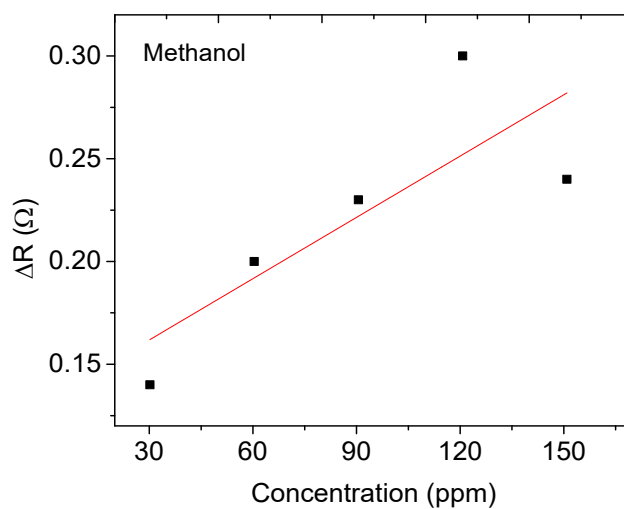
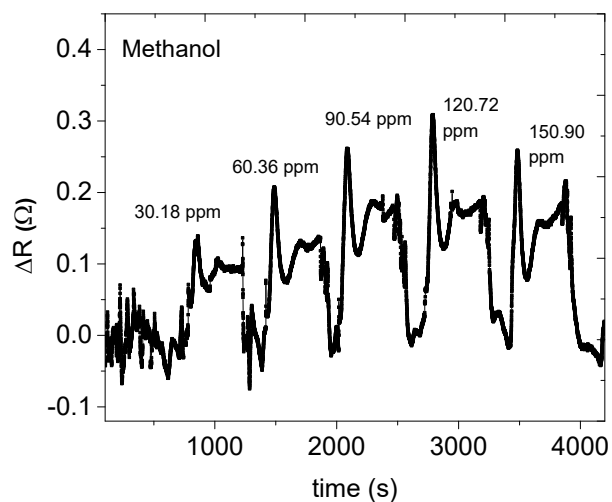


Fig. S2: Dynamic response and recovery curve of the sensor based on CNPs/ZnO@ZIF-8 (15:15) mg sensor (sensor C)

(c) Sensor D CNPs/ZnO@ZIF-8 (15:25) mg



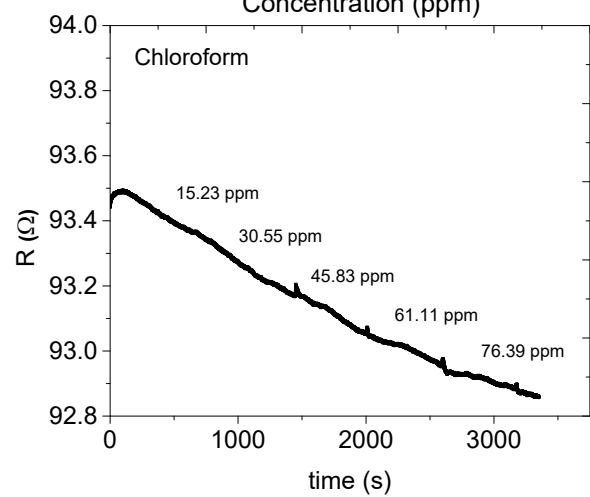
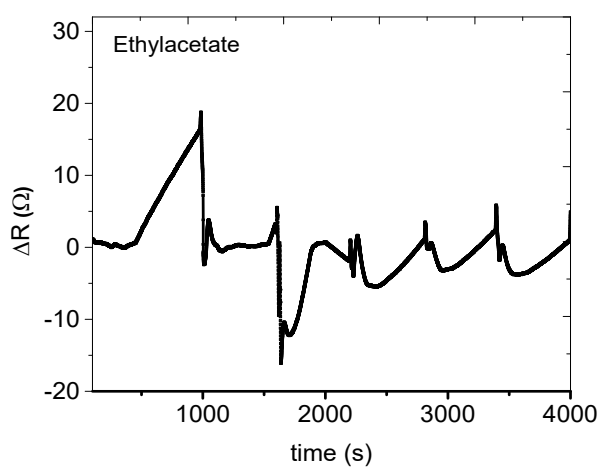
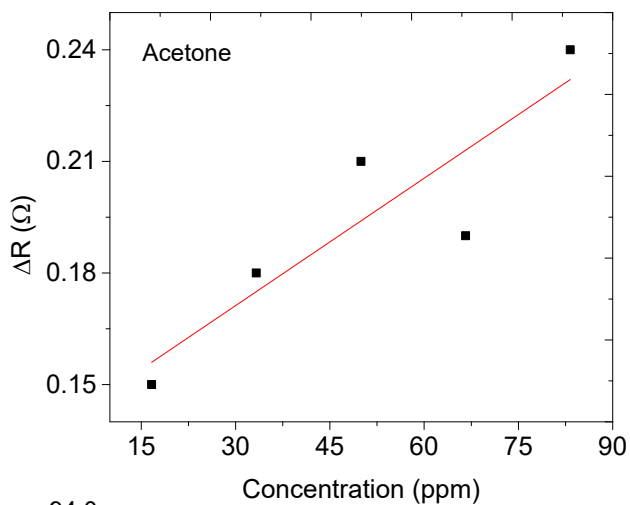
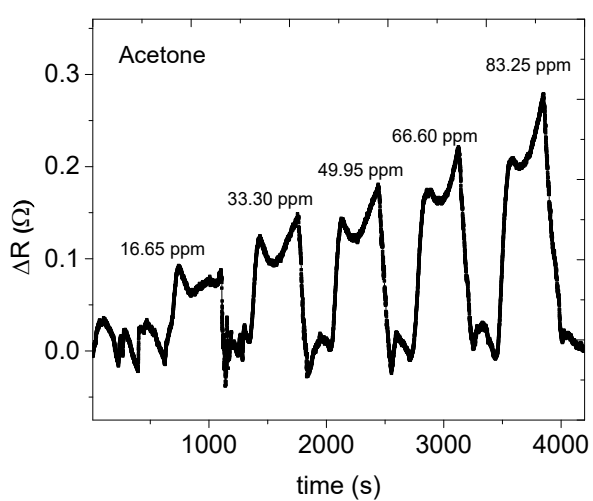
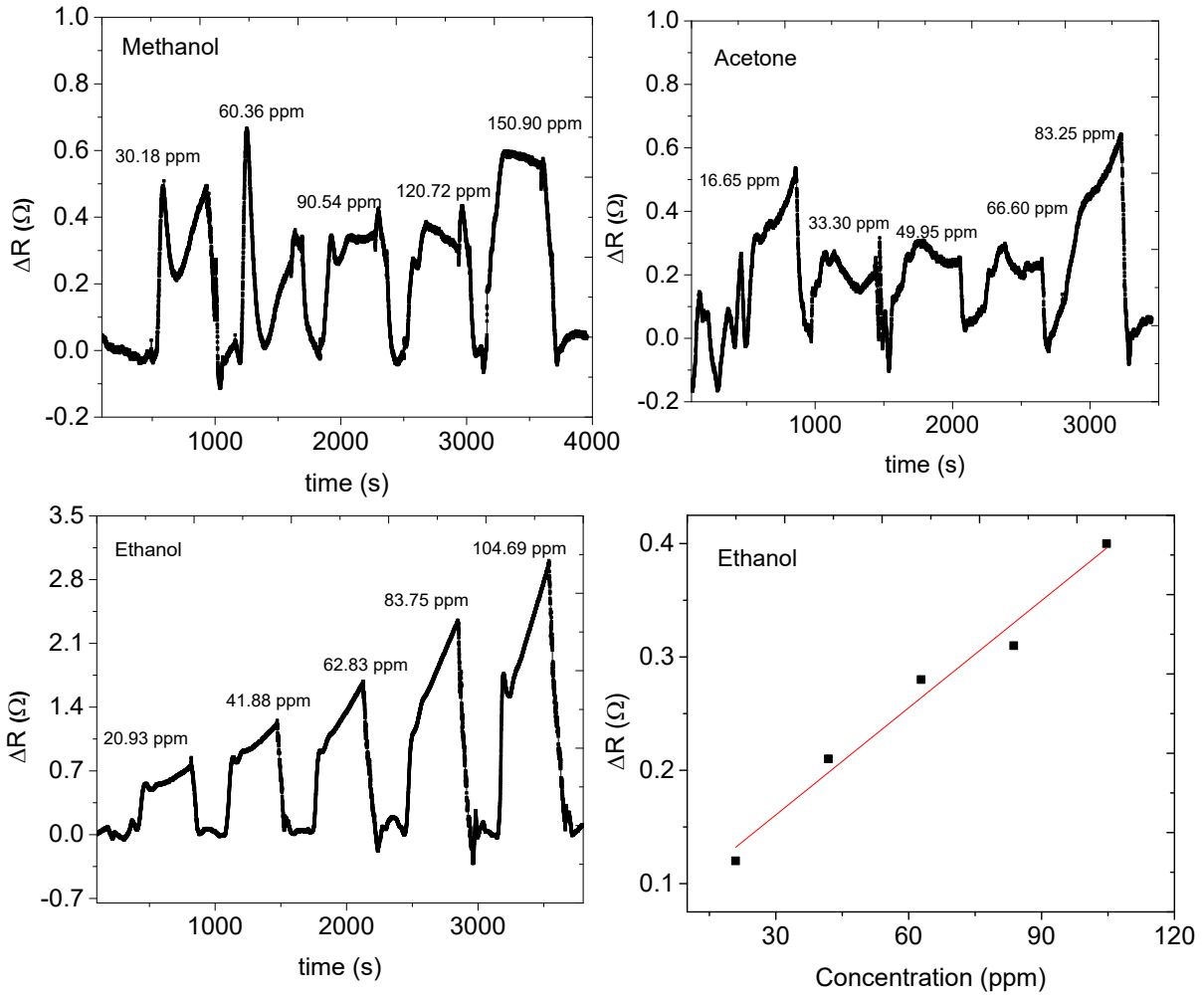


Fig. S3: Dynamic response and recovery curve of the sensor based on CNPs/ZnO@ZIF-8 (15:25) mg sensor (sensor D).

(d) Sensor E CNPs/ZnO@ZIF-8 (35:15) mg



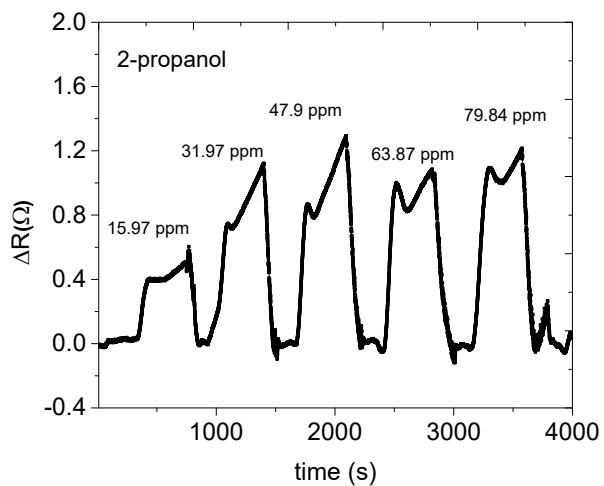
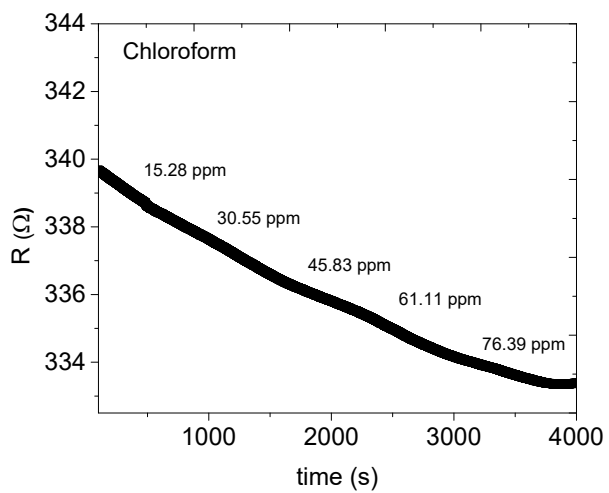
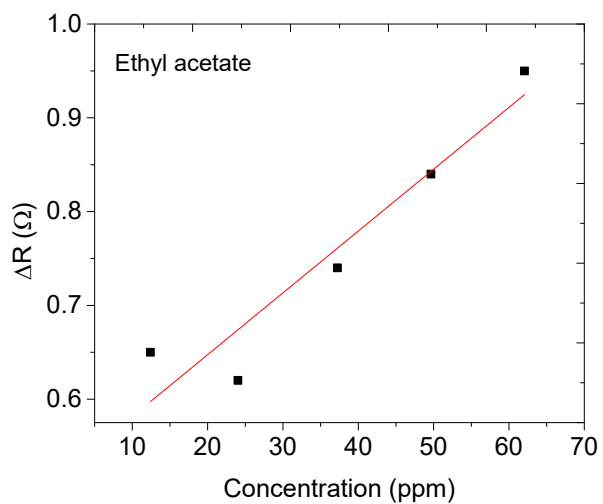
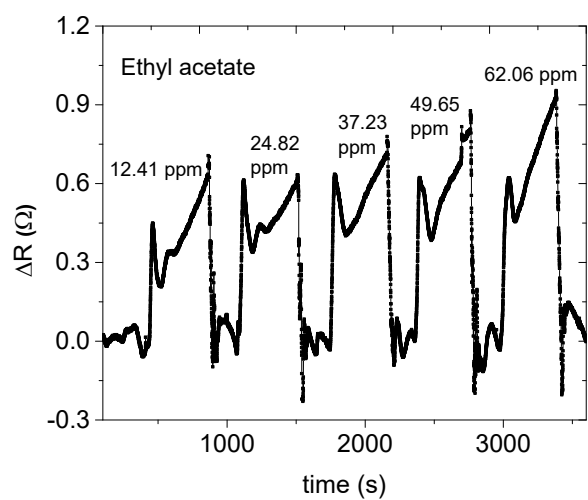
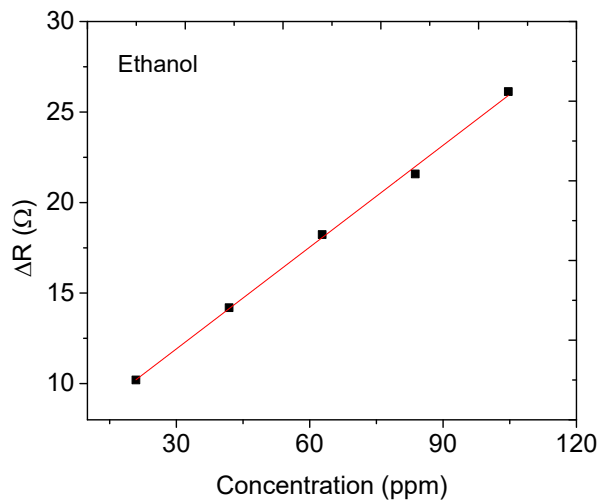
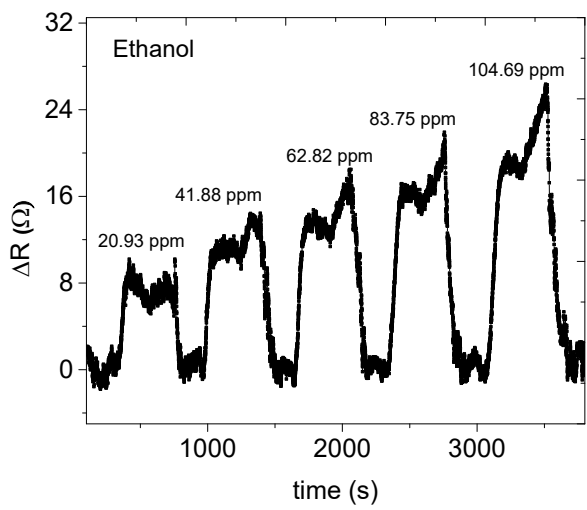
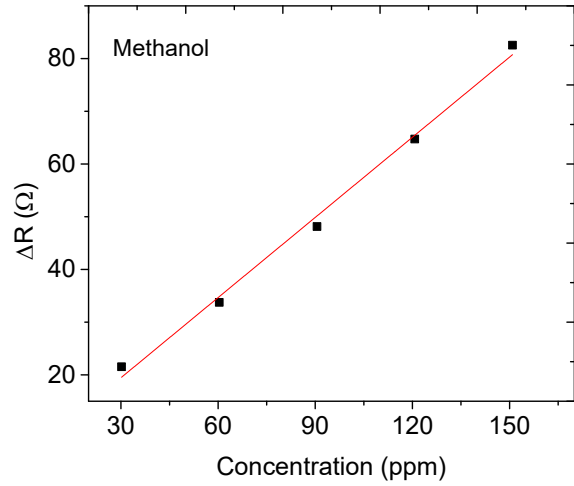
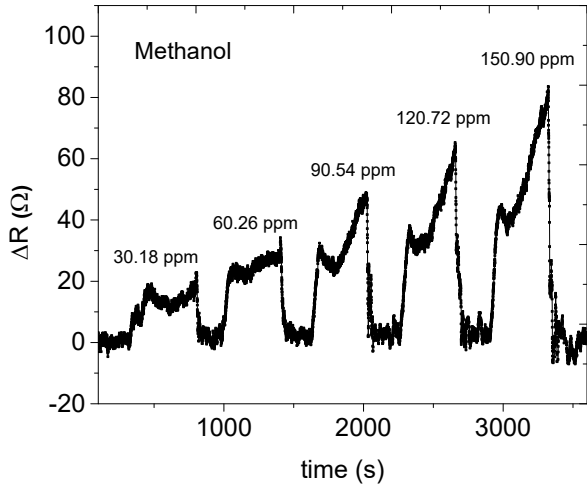


Fig. S4: Dynamic response and recovery curve of the sensor based on CNPs/ZnO@ZIF-8 (15:35) mg sensor (sensor E).

(e) Sensor F CNPs/ZnO@ZIF-8 (15:60)mg



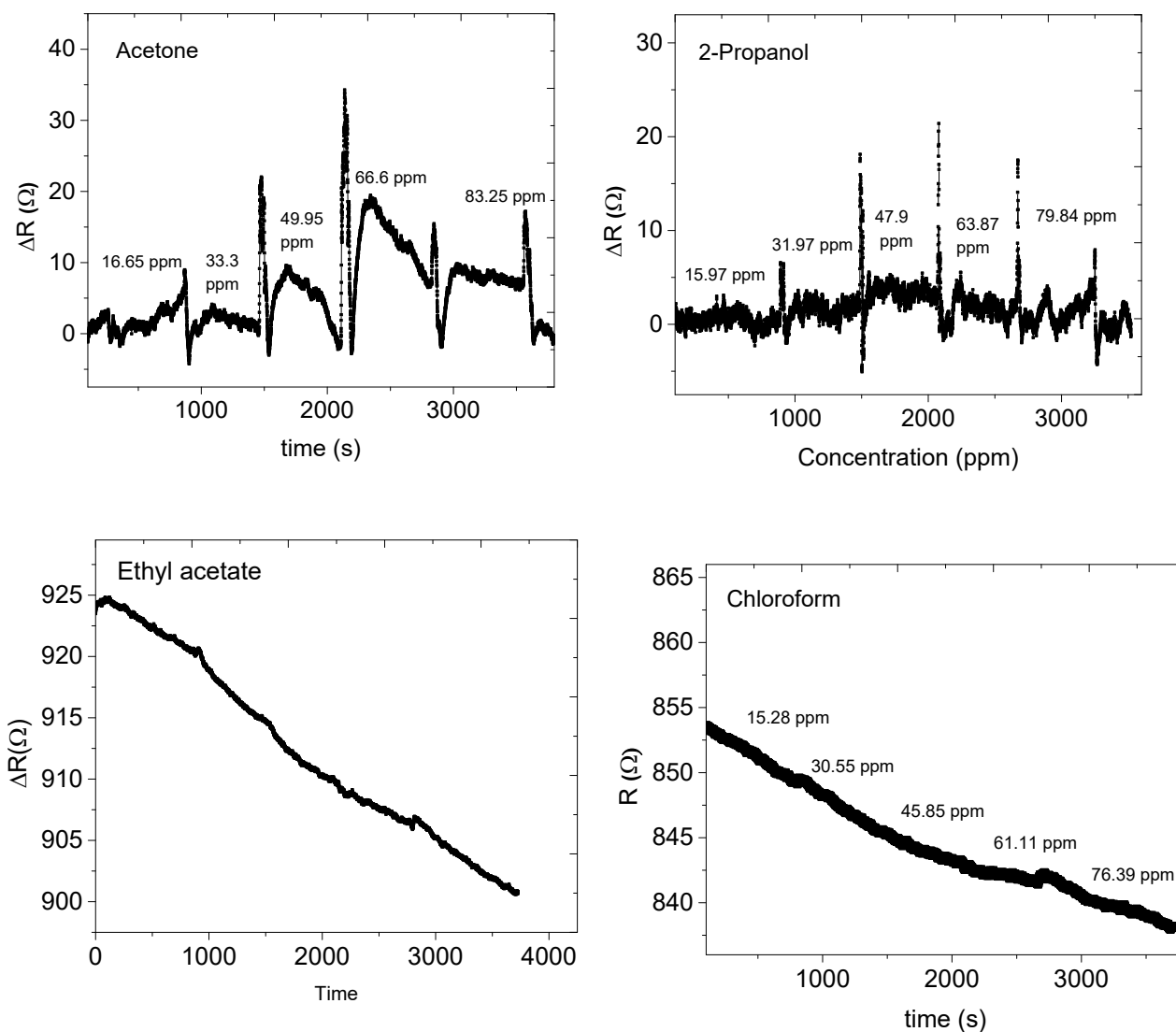


Fig. S5: Dynamic response and recovery curve of the sensor based on CNPs/ZnO@ZIF-8 (15:60) mg sensor (sensor F)

(f) the sensor based on ZnO@ZIF-8 towards methanol

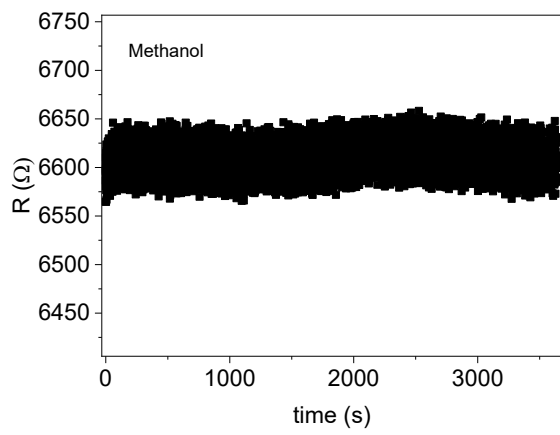


Fig. S6: Dynamic response and recovery curve of the sensor based on ZnO@ZIF-8