

Supporting Information

Qualifying the Contribution of Fiber Size Fiber Diameter on the Acrylate-based Electrospun Shape Memory Polymer Nano/microfiber Properties

Jiaxin Xi, Shima Shahab, Reza Mirzaeifar¹

Department of Mechanical Engineering, Virginia Tech, Blacksburg, Virginia 24061, USA

¹ Corresponding Author, Email: rmirzaei@vt.edu, phone: +1-540-231-8697, fax: +1-540-231-2903, lab URL: <https://www.futurematerials-lab.com/>

Table S1: Electrospinning Conditions

Polystyrene (PS) concentration (wt%)	tD : PS (wt%)	Flow rate (μ L/min)	Voltage (kV)	Working distance (cm)
25	1 : 1	1, 2.5, 5	25	17
30	1 : 1	1, 2.5, 5	25	17
35	1 : 1	1, 2.5, 5	25	17
40	1 : 1	0.75, 1, 2.5, 5, 7.5, 10	25	17

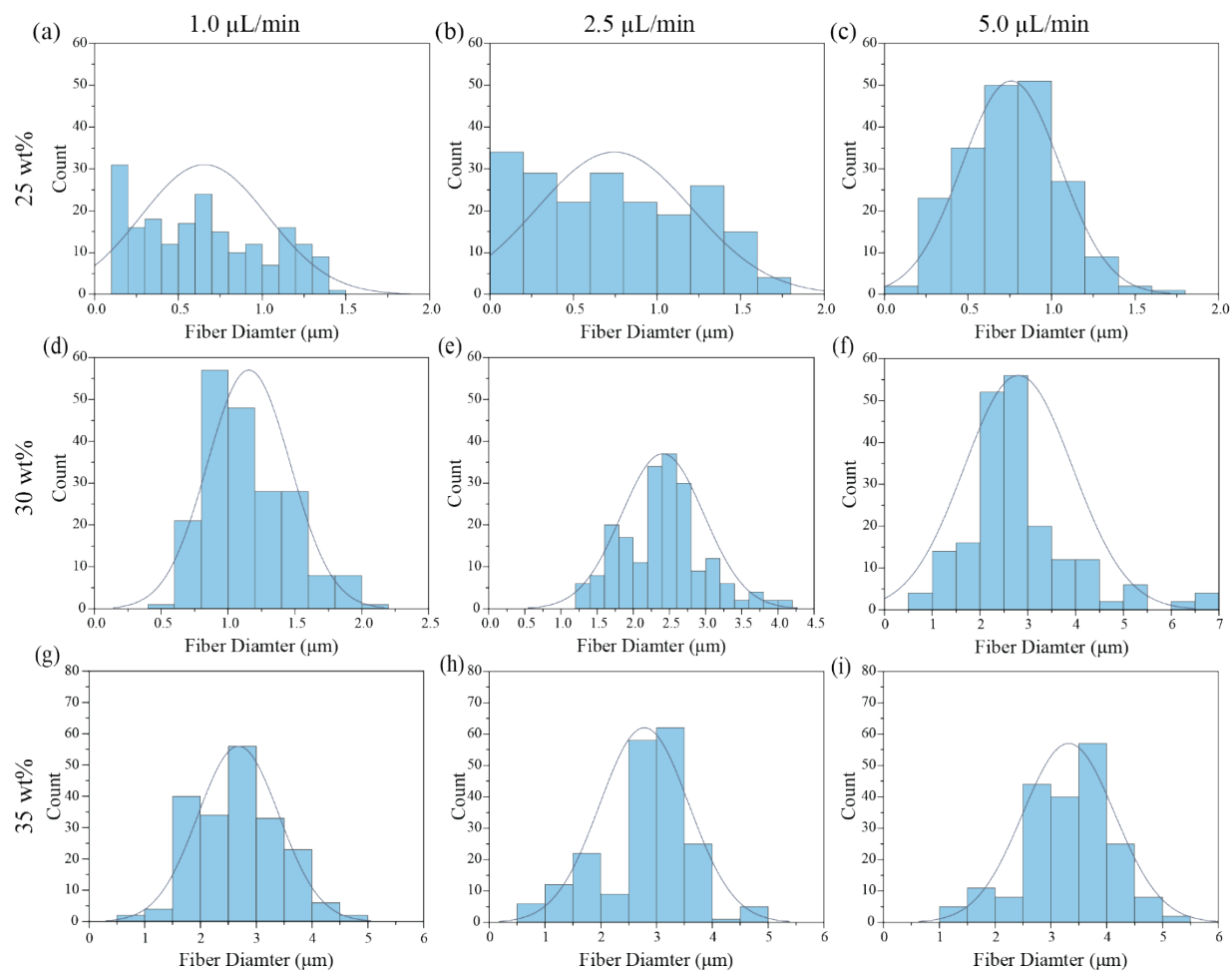


Figure S1: Histogram of fiber diameter distribution of electrospun nanofibers with different PE solution concentration of 25 wt% (a-c), 30 wt% (d-f) and 35 wt% (g-i) at various flow rates of 1.0 $\mu\text{L}/\text{min}$ (a, d, g), 2.5 $\mu\text{L}/\text{min}$ (b, e, h) and 5.0 $\mu\text{L}/\text{min}$ (c, f, i).

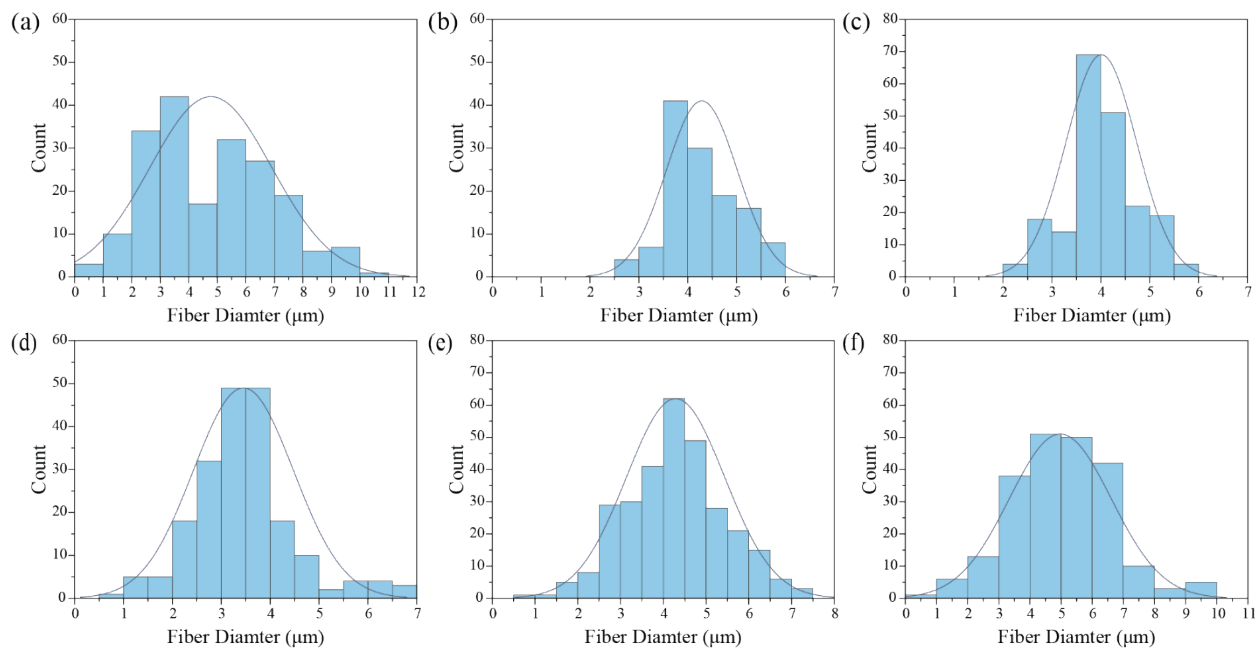


Figure S2: Histogram of fiber diameter distribution of electrospun nanofibers with 40 wt% PE solution at various flow rates; (a) 0.75 μL/min, (b) 1.0 μL/min, (c) 2.5 μL/min, (d) 5.0 μL/min, (e) 7.5 μL/min, and (f) 10.0 μL/min.

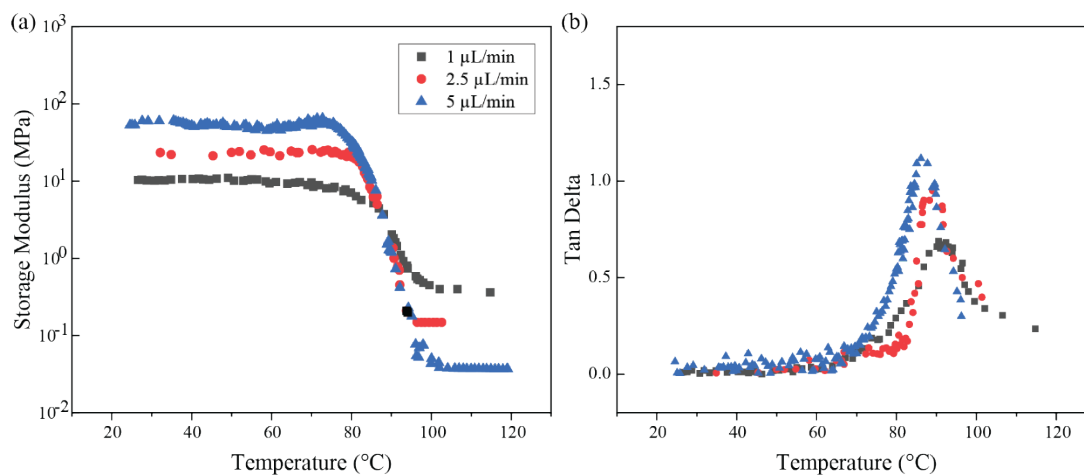


Figure S3: (a) Storage modulus and (b) tan delta obtained from DMA tests for electrospun fibers with 35 wt% PE solution at different flow rates.

Video 1. The shape memory effect of the tBA/PS (35%) sample at a flow rate 5.0 $\mu\text{L}/\text{min}$ during the heating process.