

Supplementary information

Surface-enhanced Raman scattering used to study the structure of layers formed on metal surfaces from single-stranded DNA and 6-mercaptohexan-1-ol: Influence of hybridization with the complementary DNA and influence of the metal substrate

Aleksandra Michałowska¹, Aleksandra Gajda¹, Agata Kowalczyk¹, Jan L. Weyher², Anna M. Nowicka¹, Andrzej Kudelski^{1*}

¹ Faculty of Chemistry, University of Warsaw, Pasteura 1 Str., PL 02-093 Warsaw, Poland

² Institute of High Pressure Physics of the Polish Academy of Science, Sokolowska 29/37 Str., PL 01-142 Warsaw, Poland

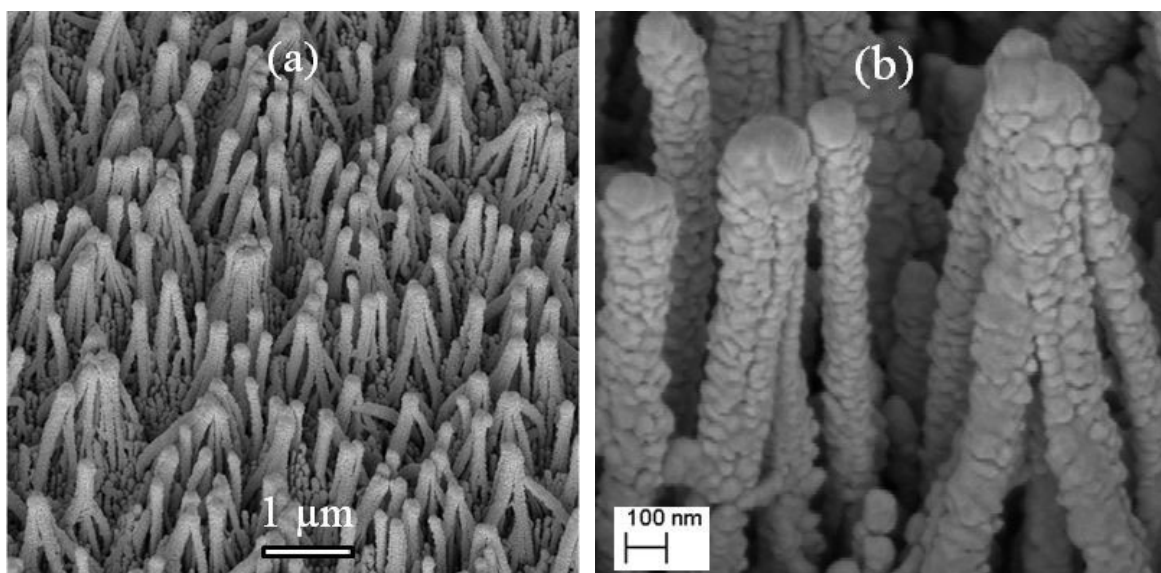


Figure S1. SEM images of a hetero-epitaxial GaN layer covered by gold.

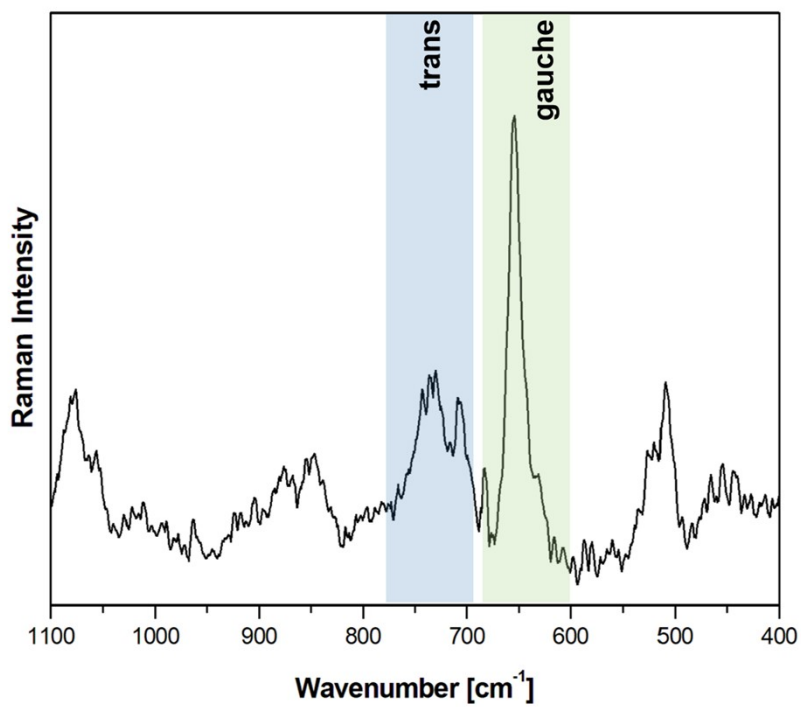


Figure S2. Raman spectrum of liquid 6-mercaptohexan-1-ol.