

# Hollow nanotube arrays nickel-cobalt metal sulfide for high energy density supercapacitors

Ding Shen<sup>a</sup>, MingYue Li<sup>a,b</sup>, Yaohan Liu<sup>a</sup>, Xiaofan Fu<sup>a</sup>, Haoran Yu<sup>a</sup>, Wei Dong<sup>\*a</sup>, ShaoBin Yang<sup>\*a</sup>

(a. College of Materials Science and Engineering, Liaoning Technical University, Fuxin 123000, Liaoning, China; b. Institute of Engineering Technology and Natural Science, Belgorod State University, Belgorod 308015, Belgorod Oblast, Russia)

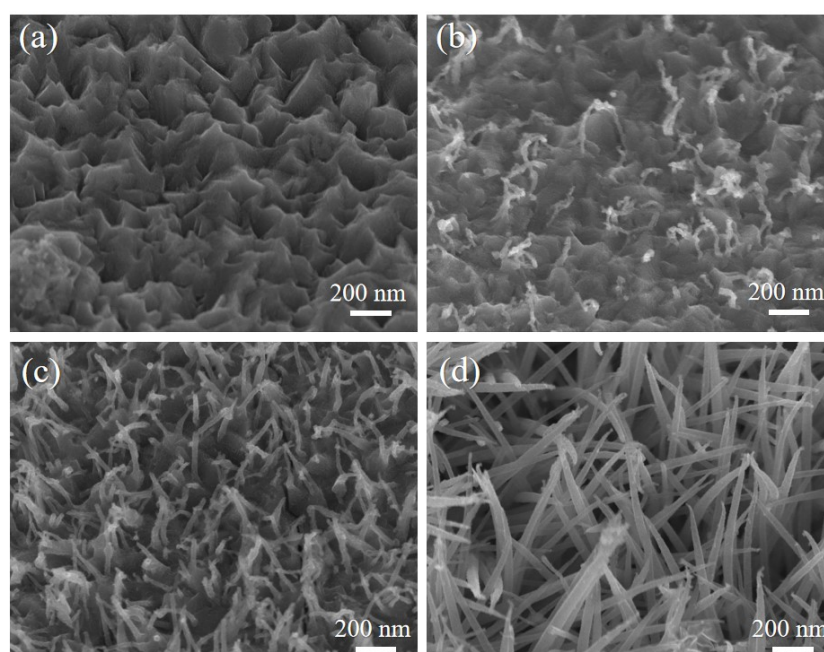


Fig. S1. The morphology of metal sulfides with different Ni/Co ratios (a) N51 sample (b) N42 sample (c) NC33 sample (d) NC15 sample