

Structured Copper-hydride Nanoclusters Provide Insight into the Surface-vacancy-defect to Non-defect Structural Evolution

Yizheng Bao,[†] Xiaohang Wu,[†] Bing Yin,[‡] Xi Kang, Zidong Lin, Huijuan Deng, Haizhu Yu, Shan Jin,^{*} Shuang Chen, ^{*} Manzhou Zhu^{*}

Institutes of Physical Science and Information Technology and Centre for Atomic Engineering of Advanced Materials, Key Laboratory of Structure and Functional Regulation of Hybrid Materials of Ministry of Education, Department of Chemistry and Anhui Province Key Laboratory of Chemistry for Inorganic/Organic Hybrid Functionalized Materials, Anhui Graphene Engineering Laboratory, Anhui University, Hefei, Anhui 230601, China

[‡]Y.Z Bao, X.H. Wu, and B. Yin contributed equally.

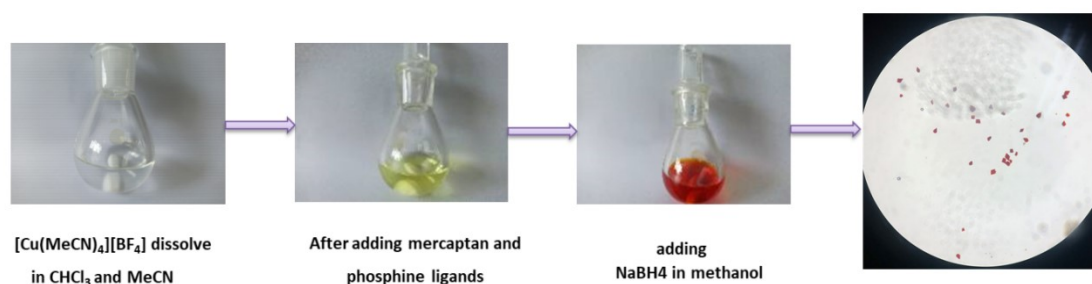


Figure S1. Scheme of the synthetic procedure for [Cu₂₈(C₆H₁₁S)₁₈(PPh₂Py)₃(H)₈][BF₄]₂ nanoclusters (Cu₂₈-PPh₂Py)

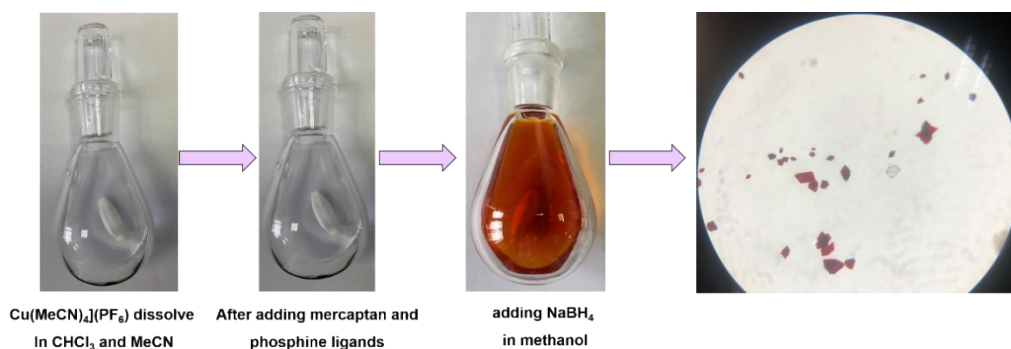


Figure S2. Scheme of the synthetic procedure for [Cu₂₉(SAdm)₁₅Cl₃(P(Ph-Cl)₃)₄H₁₀](PF₆)(Cu₂₉-P(Ph-Cl)₃).

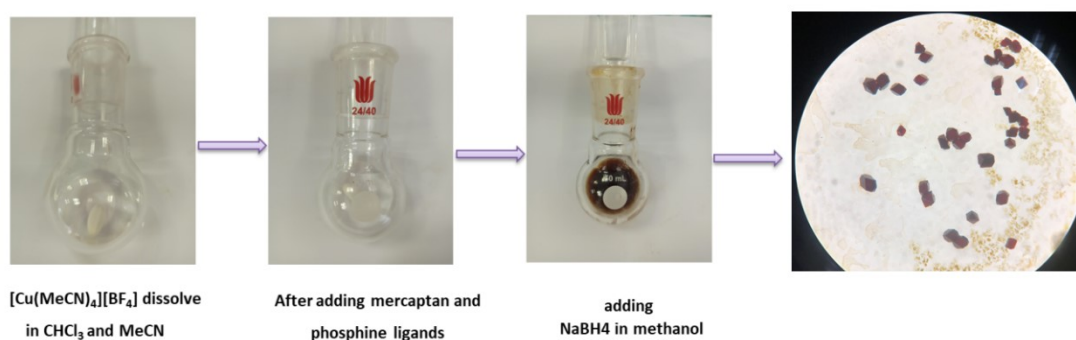


Figure S3. Scheme of the synthetic procedure for $[\text{Cu}_{29}(\text{C}_6\text{H}_{11})_{18}((\text{Ph-}^i\text{Pr})_3\text{P})_4\text{H}_{10}]^+$ ($\text{Cu}_{29}\text{-P}(\text{Ph-Me})_3$).

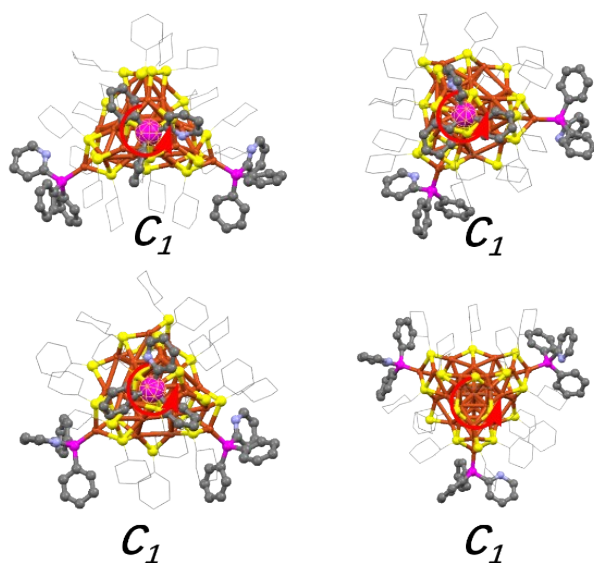


Figure S4. The overall structure of $\text{Cu}_{28}\text{-PPh}_2\text{Py}$ exhibits four C_1 symmetry axes.

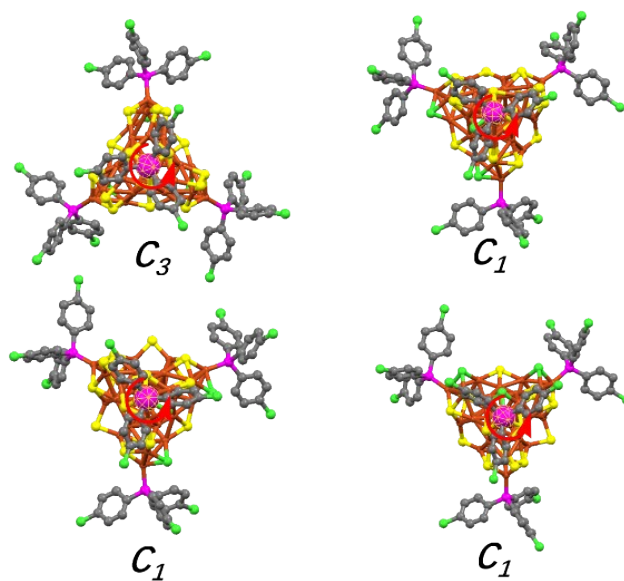


Figure S5. The overall structure of $\text{Cu}_{29}\text{-P}(\text{Ph-Cl})_3$ exhibits one C_3 and three C_1 symmetry axes.

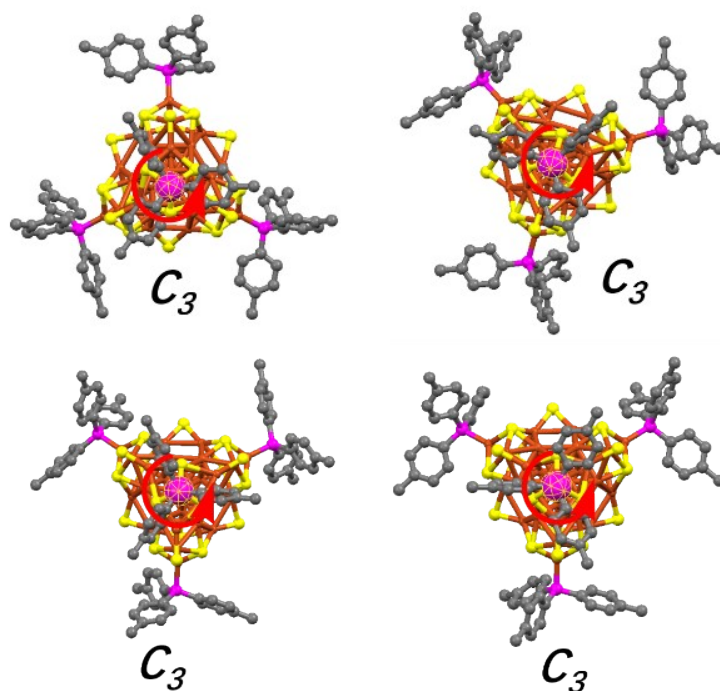


Figure S6. The overall structure of $\text{Cu}_{29}\text{-P(Ph-Me)}_3$ exhibits four C_3 symmetry axes.

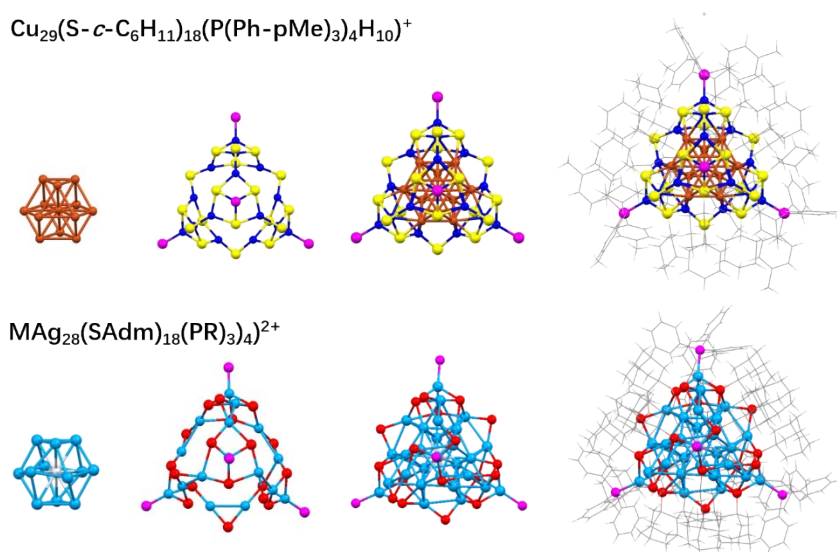


Figure S7. The structural anatomies of $\text{Cu}_{29}(\text{S-}i\text{-C}_6\text{H}_{11})_{18}(\text{P(Ph-}i\text{pMe)}_3)_4$ and $\text{Mg}_{28}(\text{S-}i\text{-C}_6\text{H}_{11})_{18}(\text{PPh}_3)_4$. The H in Cu_{29} is not shown. Color label: copper/blue = Cu, sky blue = Ag, yellow/red = S, purple = P, gray = C.

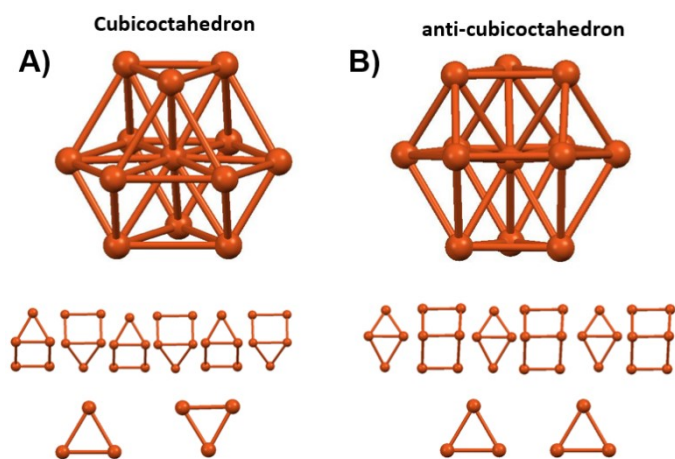


Figure S8. The difference between a cubic octahedron and an anti-cube octahedron Cu_{13} .

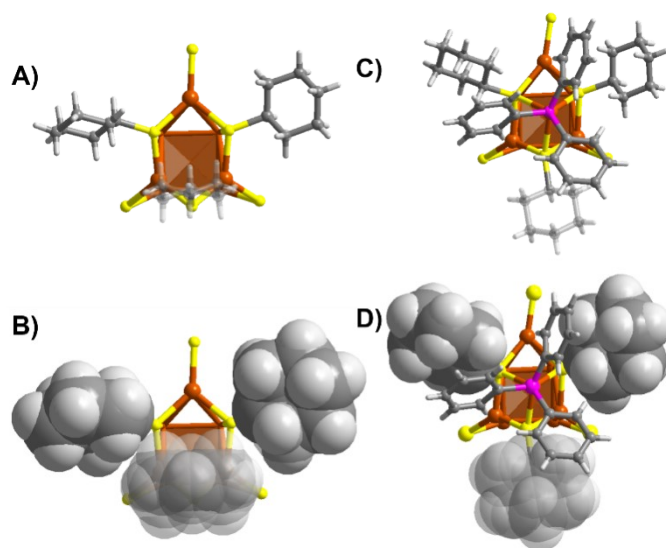


Figure S9. The spatial arrangement of thiol ligands in the Cu_3S_6 ring (Motif 1a in Figure 2), and $\text{Cu}_4\text{S}_6\text{P}_1$ (Motifs 3a/4a in Figure 2).

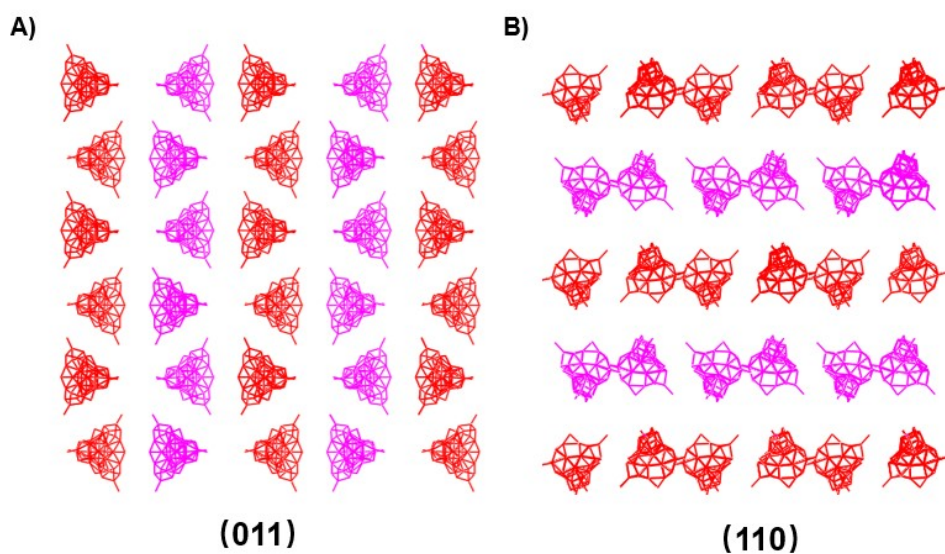


Figure S10. The crystallographic arrangement of $[\text{Cu}_{28}(\text{S-}i\text{-C}_6\text{H}_{11})_{18}(\text{PPh}_2\text{Py})_3\text{H}_8]^{2+}$ nanoclusters.

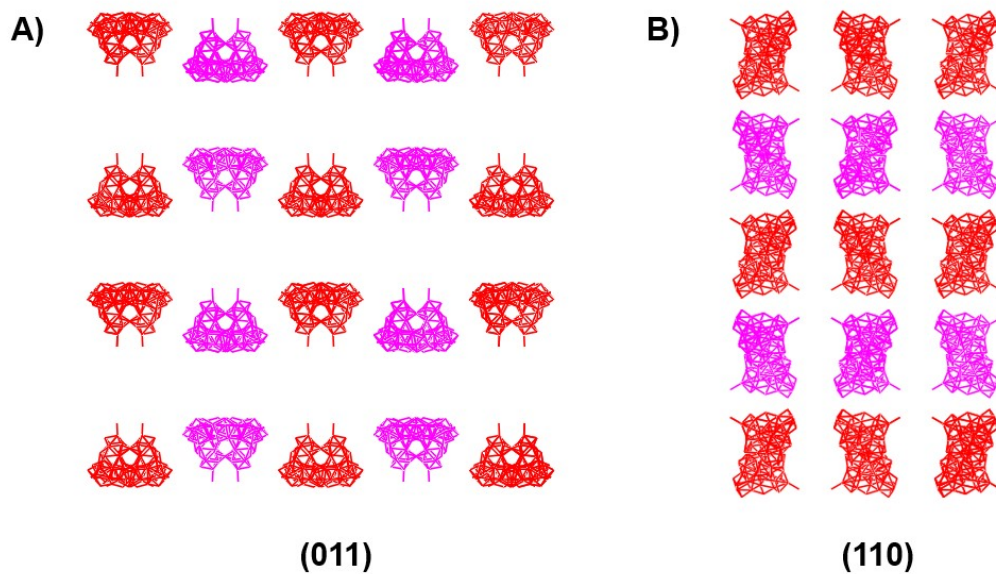


Figure S11. The crystallographic arrangement of $[\text{Cu}_{29}(\text{SAdm})_{15}\text{Cl}_3(\text{P}(\text{Ph-Cl})_3)_4\text{H}_{10}](\text{PF}_6)$ nanoclusters.

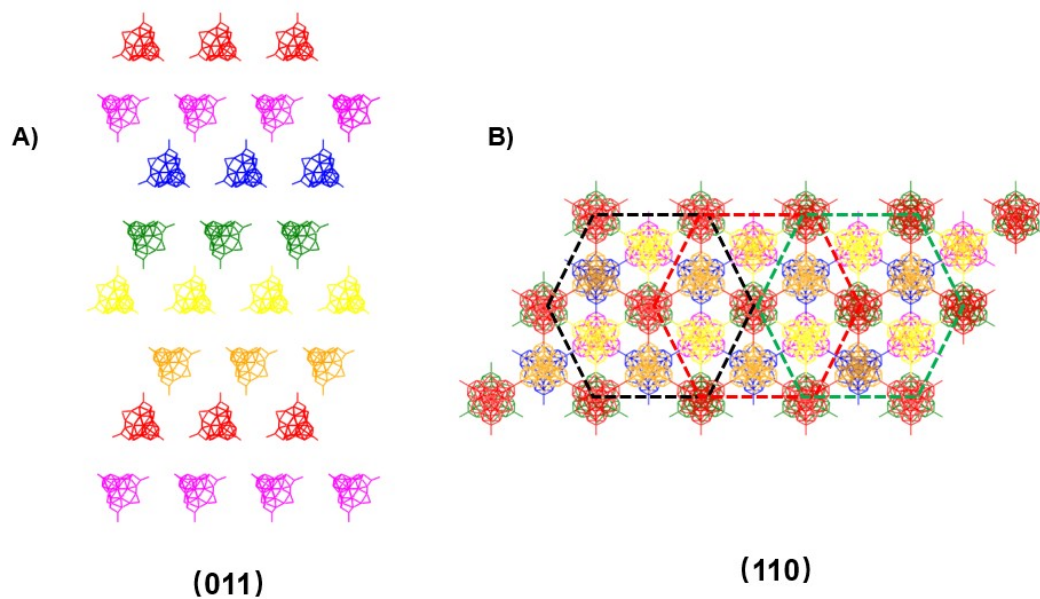


Figure S12. 6HLH crystallographic arrangement of $[\text{Cu}_{29}(\text{S-}i\text{-C}_6\text{H}_{11})_{18}(\text{P}(\text{Ph-}i\text{pMe})_3)_4\text{H}_{10}]^+$ nanoclusters.

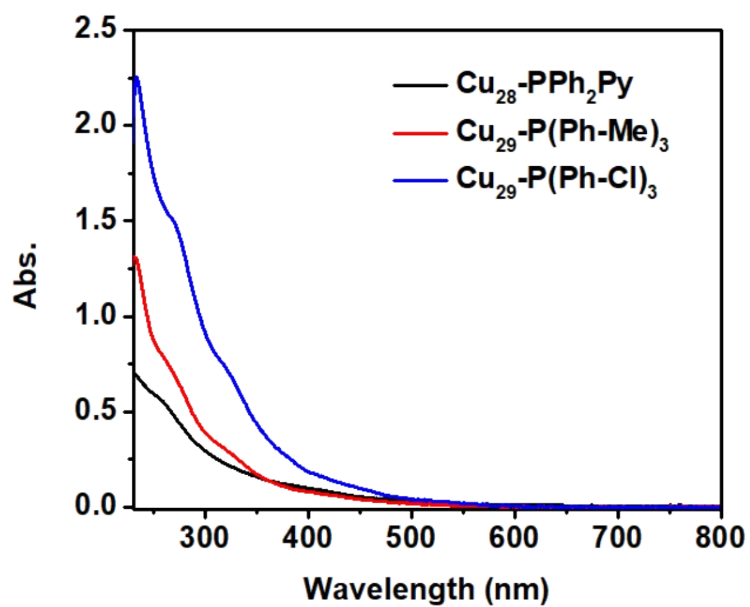


Figure S13. The UV-vis spectra of $\text{Cu}_{28}\text{-PPh}_2\text{Py}$, $\text{Cu}_{29}\text{-P(Ph-Cl)}_3$, and $\text{Cu}_{29}\text{-P(Ph-Me)}_3$.

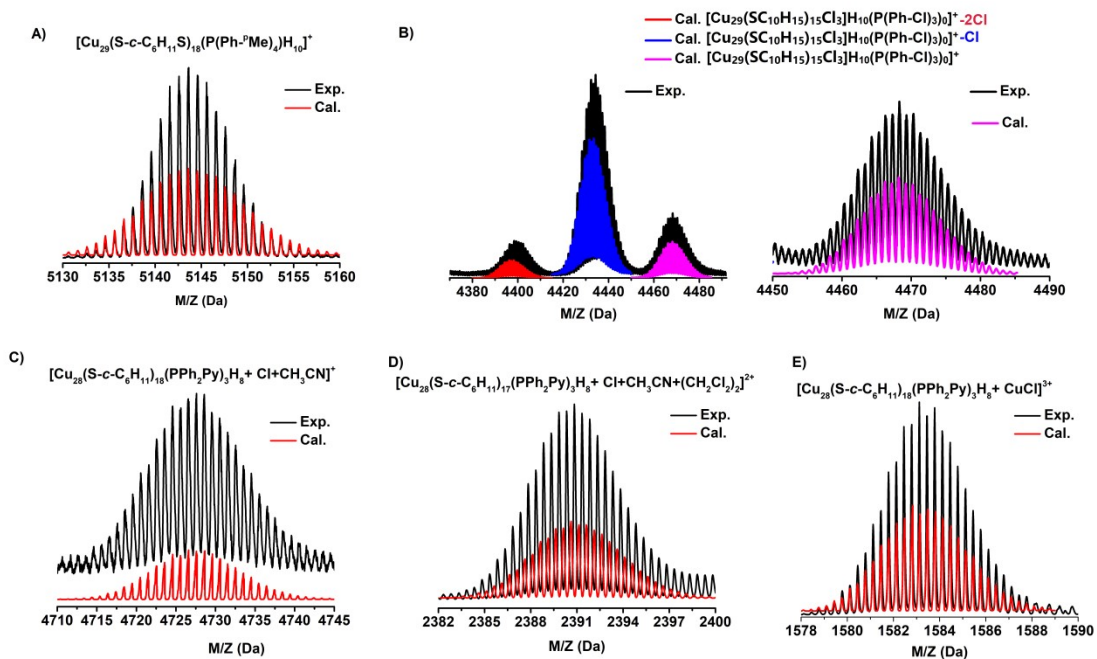


Figure S14. Experimental isotopic patterns with simulated ones.

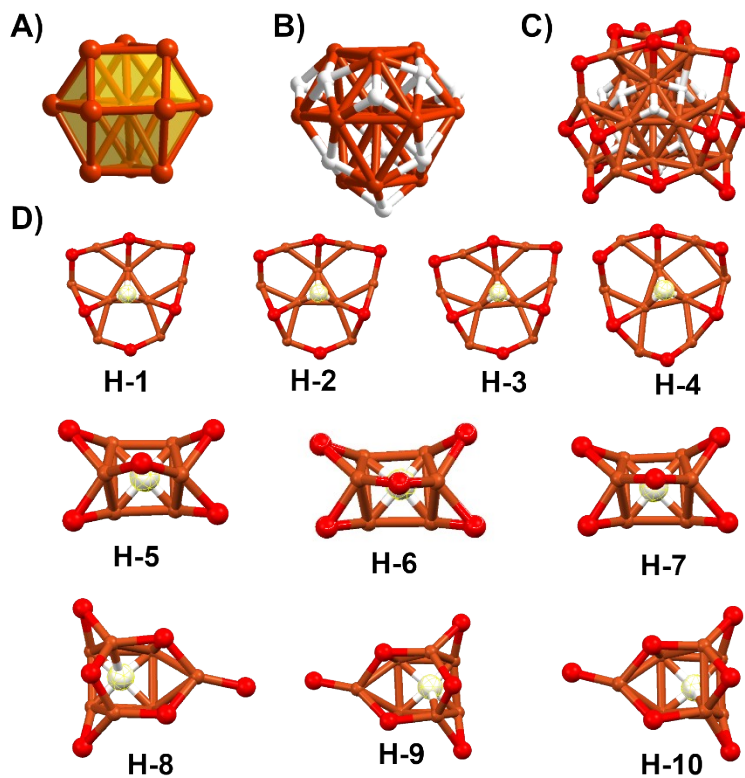


Figure S15. Structural anatomies of $[\text{Cu}_{25}(\text{SPhCl}_2)_{18}\text{H}_{10}]$ and bonding mode around H-.

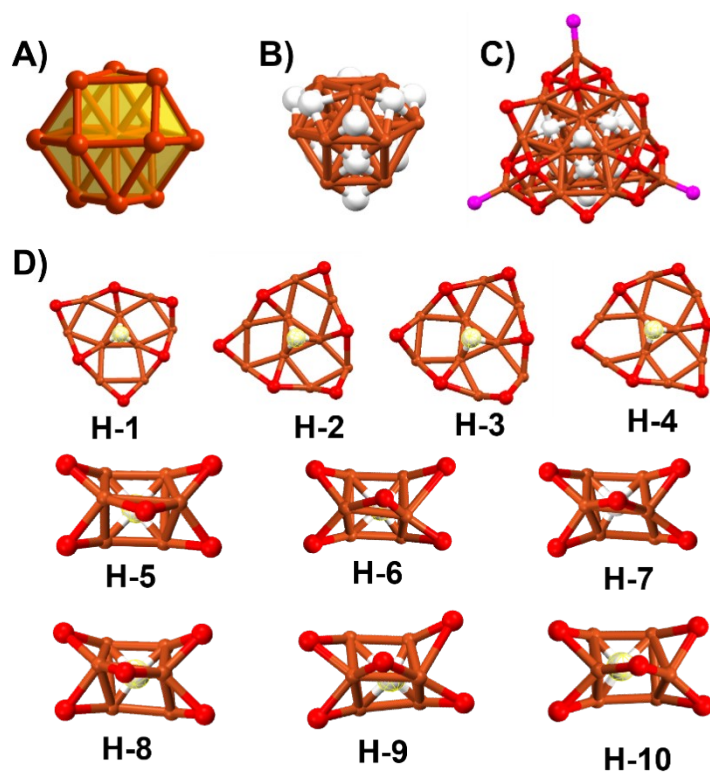


Figure S16. Structural anatomies of $\text{Cu}_{29}\text{-P(Ph-Me)}_3$ and bonding mode around H-

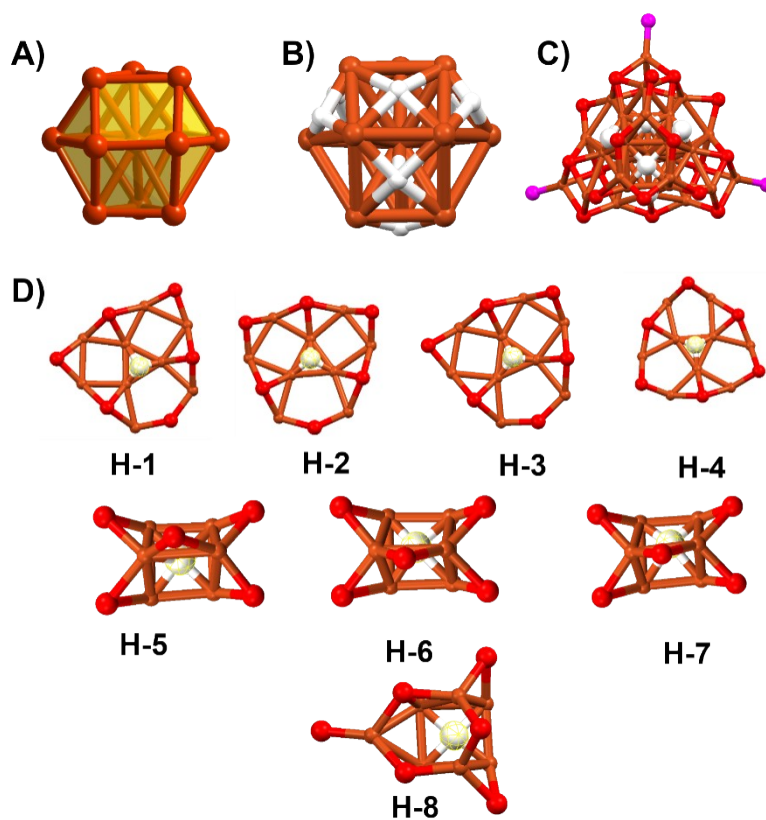


Figure S17. Structural anatomies of $\text{Cu}_{28}\text{-PPh}_2\text{Py}$ and bonding mode around H-.

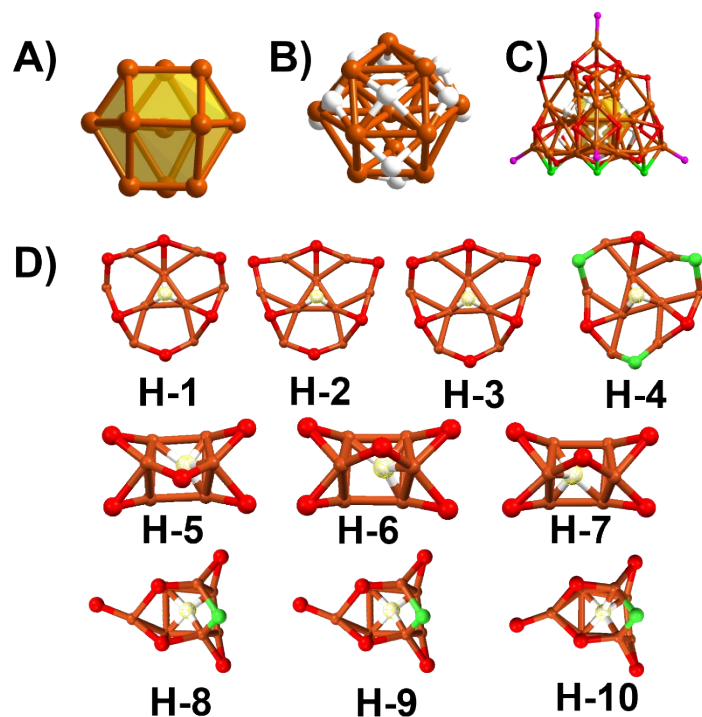


Figure S18. Structural anatomies of $\text{Cu}_{29}\text{-P(Ph-Cl)}_3$ and bonding mode around H-.

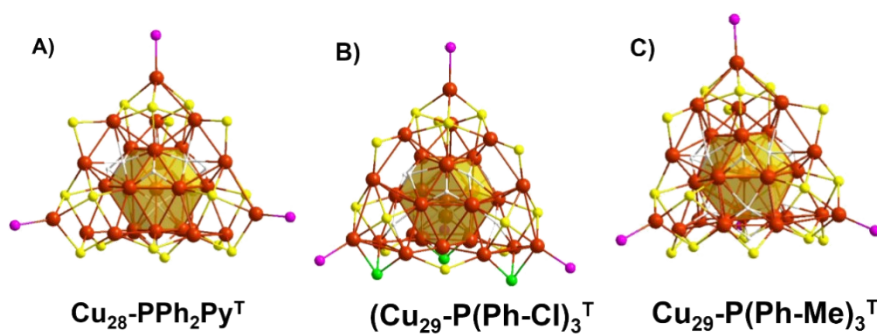


Figure S19. A) Optimized structure of $\text{Cu}_{28}\text{-PPh}_2\text{Py}^{\text{T}}$; B) optimized structure of $(\text{Cu}_{29}\text{-P(Ph-Cl)}_3)^{\text{T}}$; C) optimized structure of $\text{Cu}_{29}\text{-P(Ph-Me)}_3^{\text{T}}$. All carbon, hydrogen, and nitrogen atoms on the ligands are omitted. Color label: copper = Cu, yellow = S, purple = P, white = H.

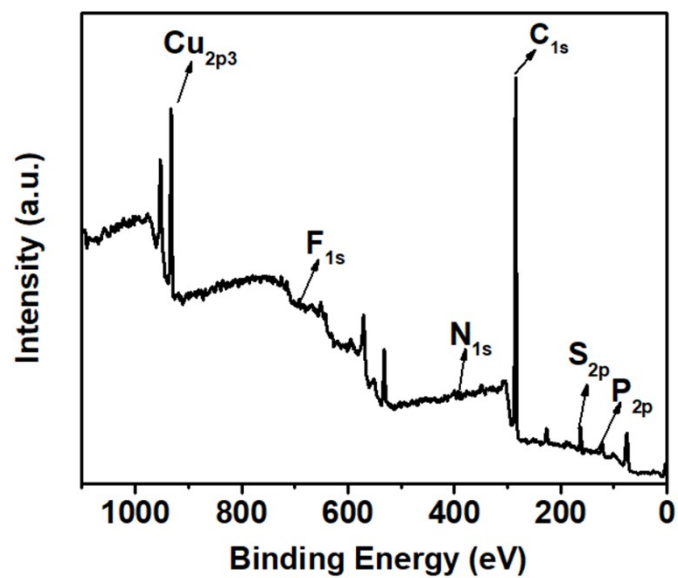


Figure S20. XPS spectra of $[\text{Cu}_{28}(\text{S-}i\text{-C}_6\text{H}_{11})_{18}(\text{PPh}_2\text{Py})_3\text{H}_8]^{2+}$.

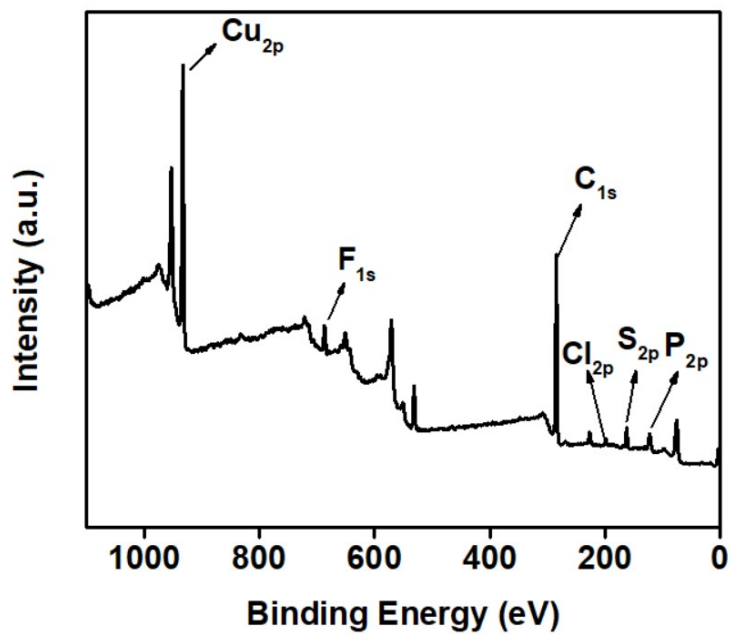


Figure S21. XPS spectra of $[\text{Cu}_{29}(\text{SAdm})_{15}\text{Cl}_3(\text{P}(\text{Ph-Cl})_3)_4\text{H}_{10}](\text{PF}_6)$.

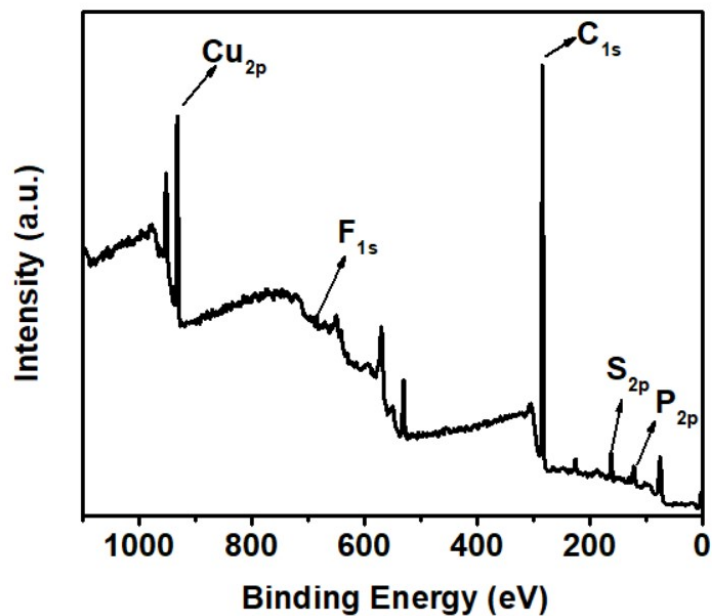


Figure S22. XPS spectra of $[\text{Cu}_{29}(\text{S-}c\text{-C}_6\text{H}_{11})_{18}(\text{P}(\text{Ph-pMe})_3)_4\text{H}_{10}]^+$.

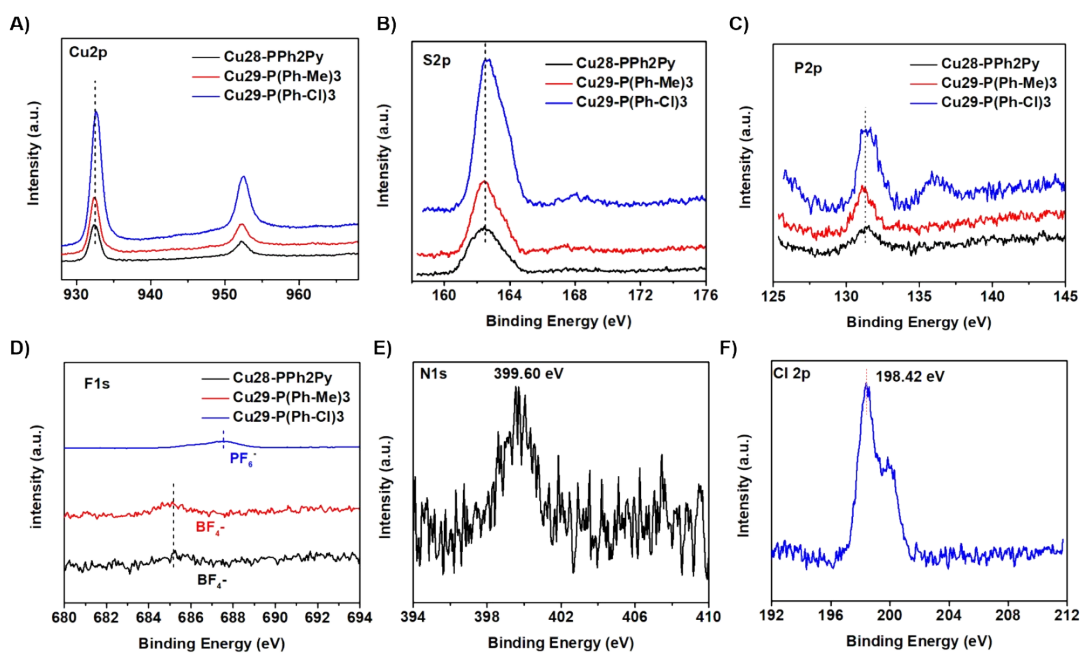


Figure S23. Survey spectrum of $[\text{Cu}_{29}(\text{S-}c\text{-C}_6\text{H}_{11})_{18}(\text{P}(\text{Ph-pMe})_3)_4\text{H}_{10}](\text{BF}_4)$, $[\text{Cu}_{29}(\text{SAdm})_{15}\text{Cl}_3(\text{P}(\text{Ph-Cl})_3)_4\text{H}_{10}](\text{PF}_6)$ and $[\text{Cu}_{28}(\text{S-}c\text{-C}_6\text{H}_{11})_{18}(\text{PPh}_2\text{Py})_3\text{H}_8](\text{BF}_4)_2$. (A-F) High-resolution XPS spectra of Cu2p, S2p, P2p, F1s, N1s and Cl2p.

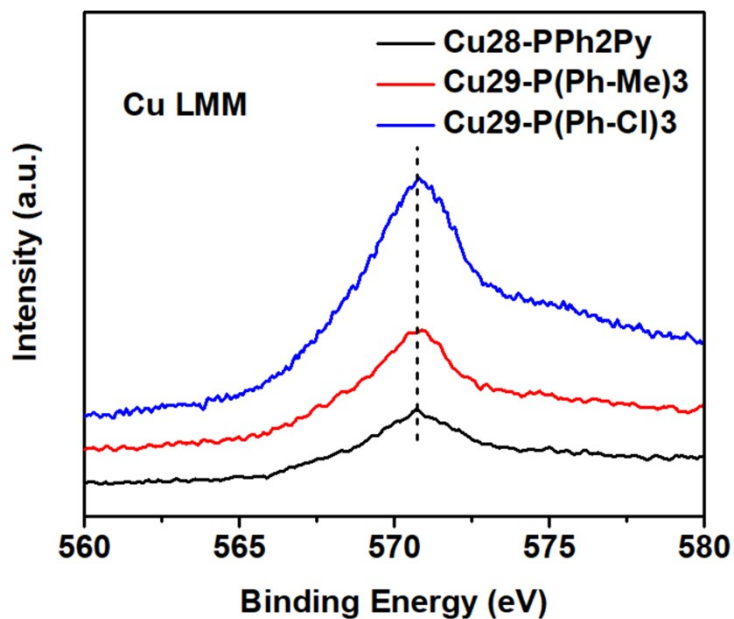


Figure S24. Cu LMM Auger spectrum of $[\text{Cu}_{29}(\text{S-}i\text{-C}_6\text{H}_{11})_{18}(\text{P}(\text{Ph-}^i\text{Me})_3)_4\text{H}_{10}](\text{BF}_4)$, $[\text{Cu}_{29}(\text{SAdm})_{15}\text{Cl}_3(\text{P}(\text{Ph-Cl})_3)_4\text{H}_{10}](\text{PF}_6)$ and $[\text{Cu}_{28}(\text{S-}i\text{-C}_6\text{H}_{11})_{18}(\text{PPh}_2\text{Py})_3\text{H}_8](\text{BF}_4)_2$.

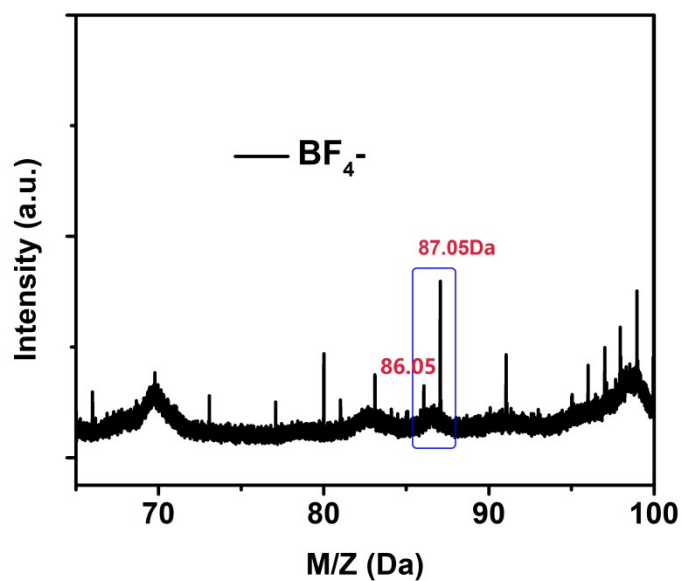


Figure S25. ESI-MS result of the BF_4^- counterion in $[\text{Cu}_{28}(\text{S-}i\text{-C}_6\text{H}_{11})_{18}(\text{PPh}_2\text{Py})_3\text{H}_8](\text{BF}_4)_2$. This suggests that the Cu_{28} -PPh₂py contains counter ions BF_4^- , although it was not observed in the crystal structure.

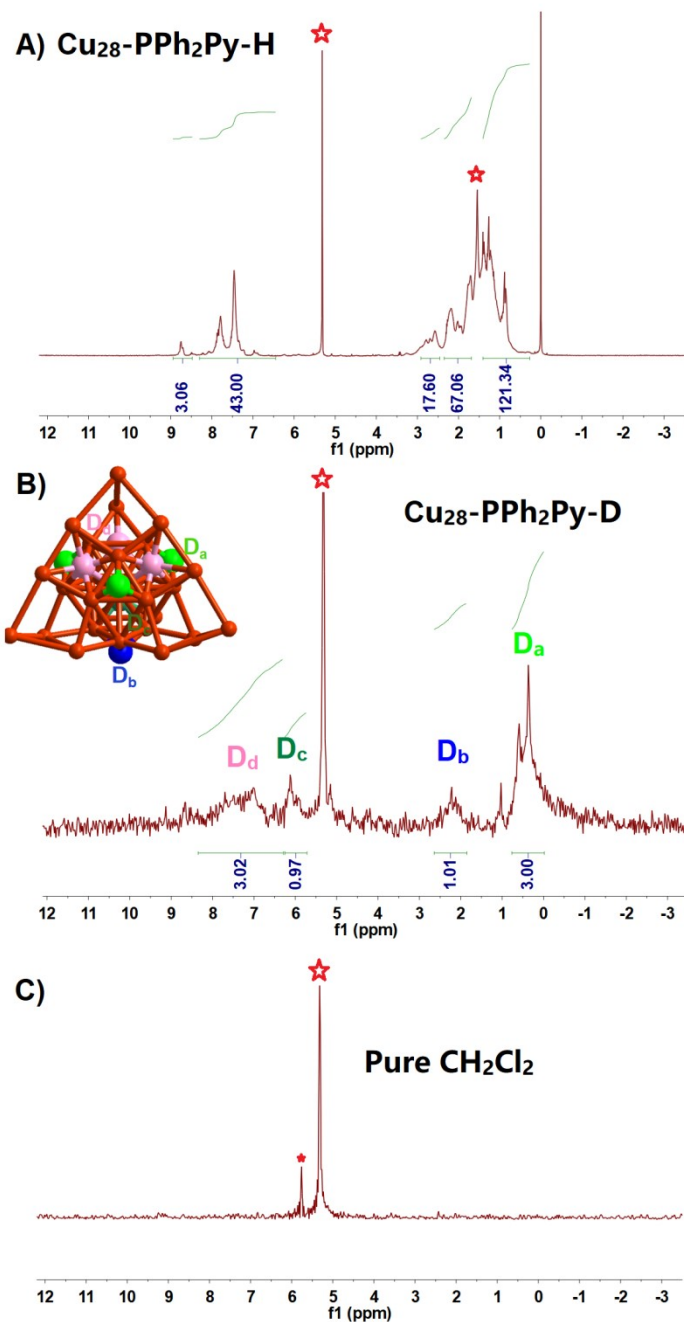


Figure S26. A) The ^1H -NMR of $\text{Cu}_{28}\text{-PPh}_2\text{Py-H}$ dissolved in CD_2Cl_2 . B) The ^2H -NMR of $\text{Cu}_{28}\text{-PPh}_2\text{Py-D}$ dissolved in CH_2Cl_2 . C) The ^2H -NMR of pure CH_2Cl_2 , which is for calibration. Asterisked peaks are solvent peaks (5.32 ppm for CH_2Cl_2 , and 1.54 ppm for H_2O). The inset in Figure S26B is optimized geometry of the $\text{Cu}_{28}\text{-PPh}_2\text{Py}$ obtained from DFT (ligands not shown); the four different D (or H) atoms, viz., D_a , D_b , D_c , and D_d shown in pale green, blue, green and dark pink, respectively. Cu atoms are shown in brown. Three D_a (or H_a shown by the pale green sphere) cap the three Cu triangles on the top half of the core and one D_b (or H_b shown by the blue sphere) caps the downward-facing Cu triangle (Cu_3) in the core. Three D_d (or H_d) covering the three Cu quadrilateral (Cu_4) on the top half of the core and one D_c (or H_c) are encapsulated in trigonal prismatic (tp) cages.

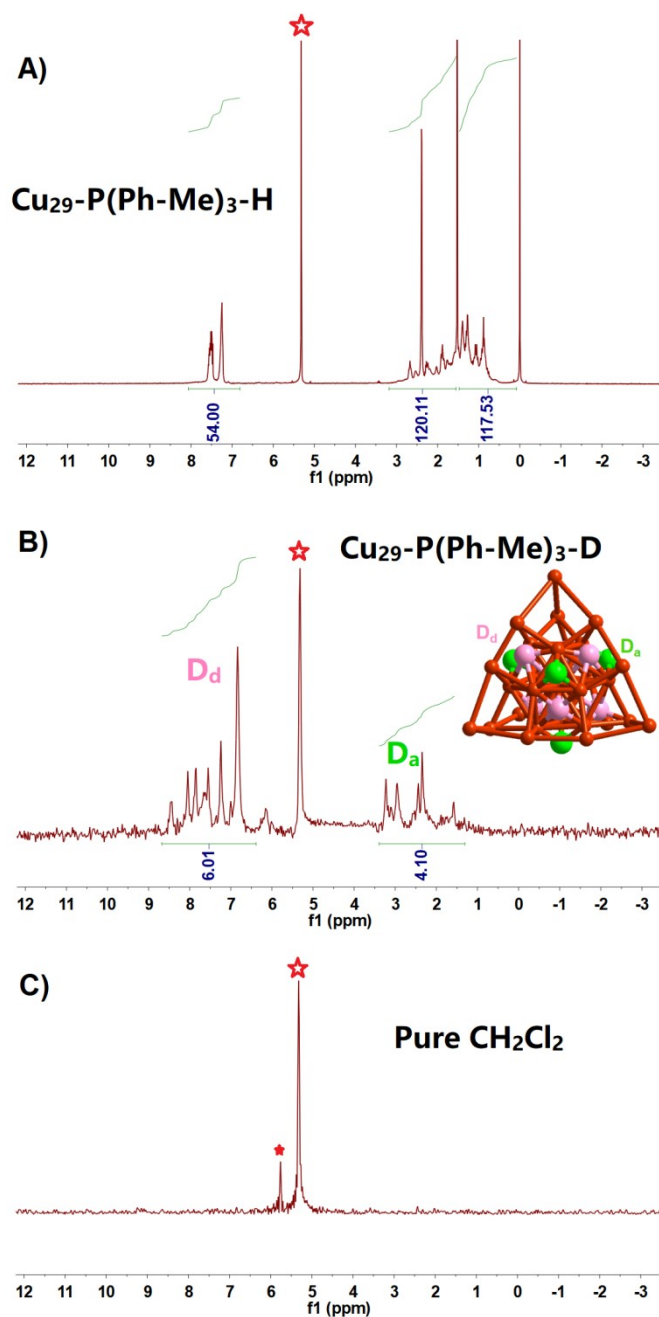


Figure S27. A) The ^1H -NMR of $\text{Cu}_{29}\text{-P(Ph-Me)-H}$ dissolved in CD_2Cl_2 . B) The ^2H -NMR of $\text{Cu}_{29}\text{-P(Ph-Me)-D}$ dissolved in CH_2Cl_2 . C) The ^2H -NMR of pure CH_2Cl_2 , which is for calibration. Asterisked peaks are solvent peaks (5.32 ppm for CH_2Cl_2 , and 1.54 ppm for H_2O). The inset in Figure S27B is optimized geometry of the $\text{Cu}_{29}\text{-P(Ph-Me)}$ obtained from DFT (ligands not shown); the two different D (or H) atoms, viz., D_a , D_d shown in pale green and dark pink, respectively. Cu atoms are shown in brown. Four D_a (or H_a shown by the pale green sphere) cap the four Cu triangles of the core. Six D_d (or H_d) covering the six Cu quadrilateral (Cu_4) of the core are encapsulated in trigonal prismatic (tp) cages.

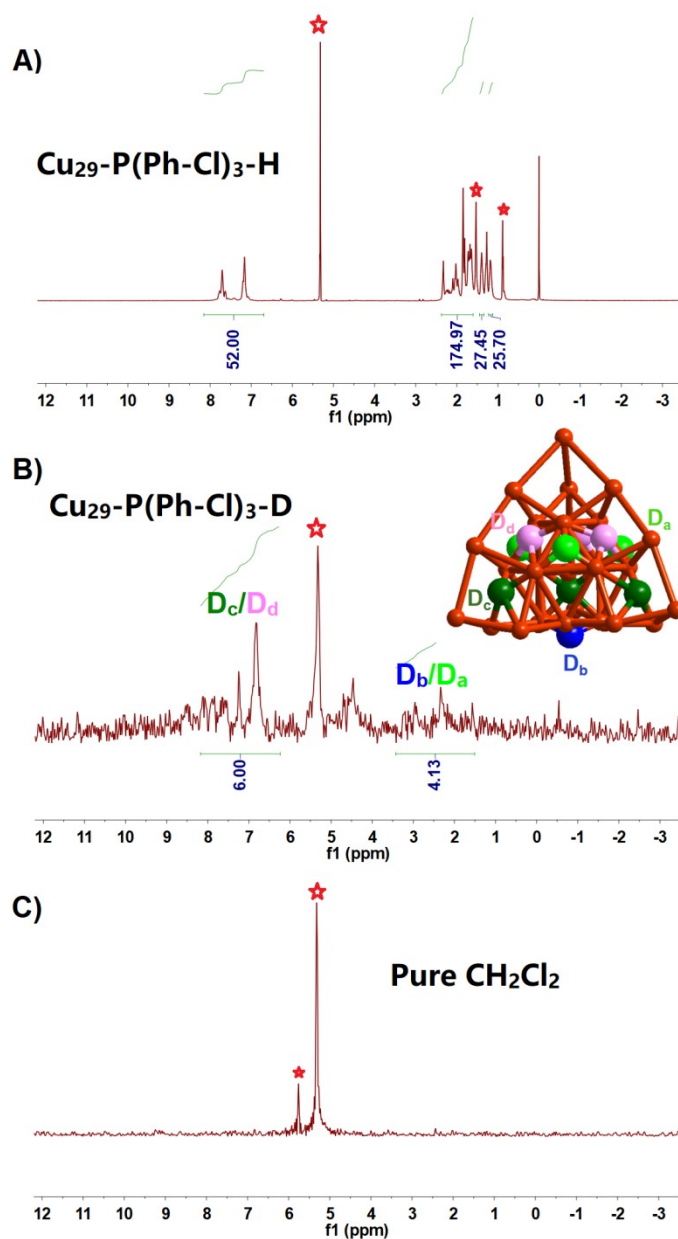


Figure S28. A) The ^1H -NMR of $\text{Cu}_{29}\text{-P(Ph-Cl)-H}$ dissolved in CD_2Cl_2 . B) The ^2H -NMR of $\text{Cu}_{29}\text{-P(Ph-Cl)-D}$ dissolved in CH_2Cl_2 . C) The ^2H -NMR of pure CH_2Cl_2 , which is for calibration. Asterisked peaks are solvent peaks (5.32 ppm for CH_2Cl_2 , 0.89 and 1.27 ppm for n-hexane, which comes from the solvent in the crystal culture process). The inset in Figure S28B is optimized geometry of the $\text{Cu}_{29}\text{-P(Ph-Cl)}$ obtained from DFT (ligands not shown); the four different D (or H) atoms, viz., D_a , D_b , D_c , and D_d shown in pale green, blue, green and dark pink, respectively. Cu atoms, viz., D_a , D_b , D_c , and D_d shown in pale green, blue, green and dark pink, respectively. Cu atoms are shown in brown. Three D_a (or H_a shown by the pale green sphere) cap the three Cu triangles on the top half of the core and one D_b (or H_b shown by the blue sphere) caps the downward-facing Cu triangle (Cu_3) in the core. Three D_d (or H_d) covering the three Cu quadrilateral (Cu_4) on the top half of the core and three D_c (or H_c) are encapsulated in trigonal prismatic (tp) cages.

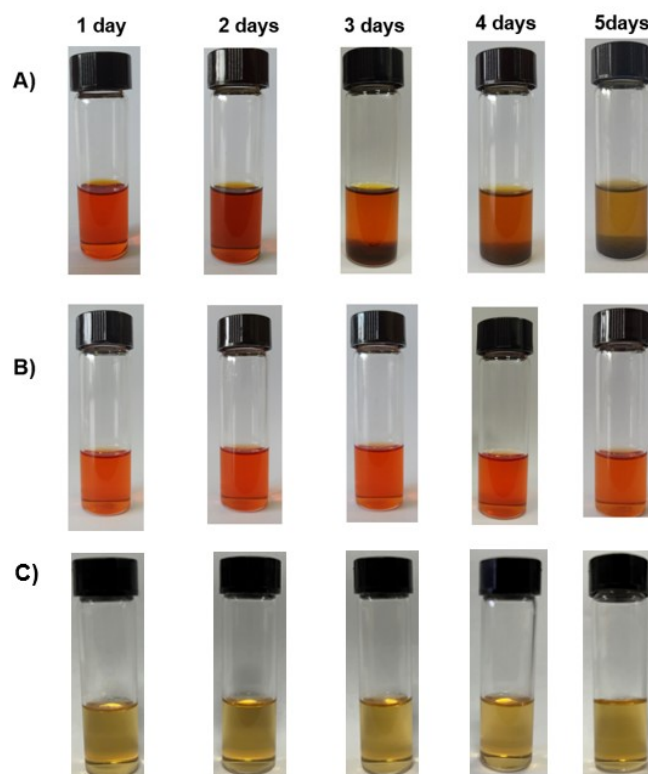


Figure S29. The stability of A) $\text{Cu}_{28}\text{-PPh}_2\text{Py}$, B) $\text{Cu}_{29}\text{-P(Ph-Me)}_3$, and C) $\text{Cu}_{29}\text{-P(Ph-Cl)}_3$ in the CH_2Cl_2 solution at room temperature.

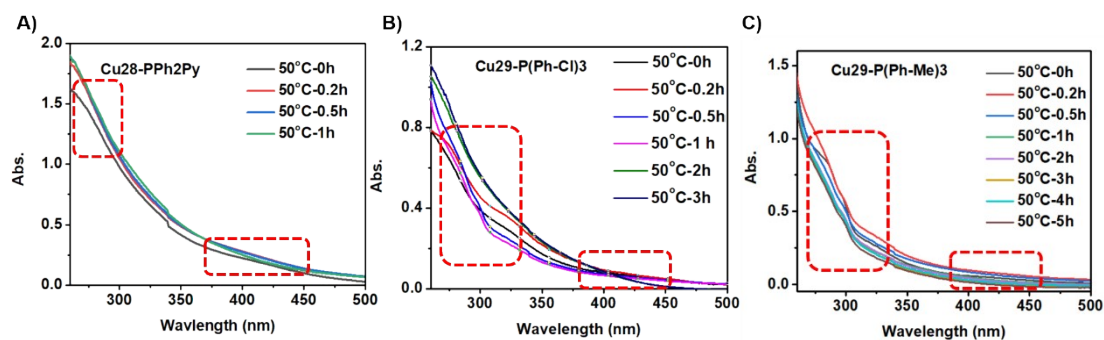


Figure S30. Time-dependent UV-vis spectra of A) $\text{Cu}_{28}\text{-PPh}_2\text{Py}$, B) $\text{Cu}_{29}\text{-P(Ph-Cl)}_3$, and C) $\text{Cu}_{29}\text{-P(Ph-Me)}_3$ in the CHCl_3 solution under a 50°C oil bath.

Table S1. Crystal data and structure refinement for $\text{Cu}_{28}\text{-PPh}_2\text{Py}$.

Empirical formula	$\text{C}_{159.5}\text{H}_{238.3}\text{ClCu}_{28}\text{N}_3\text{P}_3\text{S}_{18}$
Formula weight	4682.38
Temperature/K	150(2)
Crystal system	monoclinic
Space group	$\text{P2}_1/\text{a}$

a/Å	22.8639(13)
b/Å	32.229(2)
c/Å	26.6451(15)
α /°	90
β /°	90.576(5)
γ /°	90
Volume/Å ³	19633(2)
Z	4
Radiation	CuK α (λ = 1.54186)
Index ranges	-14 \leq h \leq 26, -37 \leq k \leq 31, -30 \leq l \leq 30
Reflections collected	110149
Independent reflections	31015 [R_{int} = 0.0269, R_{sigma} = 0.0322]
Final R indexes [$I \geq 2\sigma(I)$]	R_1 = 0.0846, wR_2 = 0.2320
Final R indexes [all data]	R_1 = 0.1018, wR_2 = 0.2434
Largest diff. peak/hole / e Å ⁻³	4.39/-2.71

Table S2. Crystal data and structure refinement for Cu₂₉-P(Ph-Cl)₃.

Empirical formula	C ₂₂₆ H ₂₈₃ Cl ₁₅ Cu ₂₉ F ₆ OP ₅ S ₁₅
Formula weight	6139.67
Temperature/K	150(2)
Crystal system	monoclinic
Space group	I2/a
a/Å	36.1154(13)
b/Å	34.7927(17)
c/Å	50.324(2)
α /°	90
β /°	102.424(3)
γ /°	90
Volume/Å ³	61754(5)
Z	8
Radiation	CuK α (λ = 1.54186)
Index ranges	-41 \leq h \leq 17, -40 \leq k \leq 40, -56 \leq l \leq 59
Reflections collected	193152
Independent reflections	52172 [R_{int} = 0.1402, R_{sigma} = 0.0991]
Final R indexes [$I \geq 2\sigma(I)$]	R_1 = 0.1162, wR_2 = 0.3023
Final R indexes [all data]	R_1 = 0.1599, wR_2 = 0.3282
Largest diff. peak/hole / e Å ⁻³	1.70/-1.78

Table S3. Crystal data and structure refinement for Cu₂₉-Ph-PMe.

Empirical formula	C ₁₉₂ H ₂₈₂ BCu ₂₉ F ₄ P ₄ S ₁₈
Formula weight	5220.59
Temperature/K	150(2)
Crystal system	trigonal
Space group	R-3
a/Å	21.191(2)
b/Å	21.191(2)
c/Å	90.410(6)
α /°	90
β /°	90
γ /°	120
Volume/Å ³	35160(7)
Z	6
Radiation	CuK α (λ = 1.54186)
Index ranges	-21 ≤ h ≤ 23, -24 ≤ k ≤ 25, -75 ≤ l ≤ 109
Reflections collected	34835
Independent reflections	14265 [R _{int} = 0.0046, R _{sigma} = 0.0618]
Final R indexes [I >= 2 σ (I)]	R ₁ = 0.0569, wR ₂ = 0.1275
Final R indexes [all data]	R ₁ = 0.0798, wR ₂ = 0.1327
Largest diff. peak/hole / e Å ⁻³	1.05/-0.49

Table S4. The average value of Cu-H and Cu-Cu bond length in cuboctahedron core. Cu-H^{ave} represents the average value of Cu-H. The Cu-Cu^{ave} represents the average value of Cu-Cu.

	Cu-H^{ave}	Cu-Cu^{ave}
Cu ₂₅	1.835	2.598
Cu ₂₉ -P(Ph-Me) ₃	/	2.716
Cu ₂₉ -P(Ph-Me) ₃ ^T	1.918	2.635
Cu ₂₈ -PPh ₂ Py	/	2.605
Cu ₂₈ -PPh ₂ Py ^T	1.848	2.641
Cu ₂₉ -P(Ph-Cl) ₃	/	2.617
Cu ₂₉ -P(Ph-Cl) ₃ ^T	1.928	2.659

Table S5. The coordinate of the optimized geometry of Cu₂₈-PPh₂Py^T

Cu	6.718000	1.178000	6.680000
Cu	8.737000	2.183000	7.938000
Cu	5.709000	-0.812000	8.079000
Cu	8.839000	2.082000	5.462000
Cu	5.116000	2.677000	5.217000
Cu	5.852000	-0.933000	5.407000
Cu	6.740000	0.964000	4.032000
Cu	8.202000	-0.448000	8.185000
Cu	4.944000	2.786000	7.832000
Cu	6.474000	1.187000	9.317000
Cu	8.333000	-0.552000	5.424000
Cu	4.163000	0.823000	6.559000
Cu	7.253000	3.747000	6.562000
Cu	10.696000	0.470000	8.250000
Cu	10.752000	0.289000	5.241000
Cu	4.030000	1.867000	10.172000
Cu	6.286000	4.957000	4.400000
Cu	8.813000	-2.734000	7.009000
Cu	3.407000	-0.628000	4.487000
Cu	3.216000	-0.378000	8.749000
Cu	8.068000	3.031000	10.320000
Cu	8.350000	2.937000	3.021000
Cu	4.431000	1.455000	2.827000
Cu	6.091000	5.009000	8.535000
S	6.108000	2.180000	11.356000
Cu	5.804000	3.913000	1.147000
Cu	5.474000	4.511000	11.764000
S	4.488000	3.821000	3.345000
S	10.042000	-1.715000	8.694000
S	4.183000	4.131000	9.571000
S	6.577000	1.759000	1.892000
S	6.344000	5.870000	6.455000
S	10.047000	2.075000	9.810000
Cu	6.069000	-3.111000	6.926000
S	12.357000	0.731000	6.758000
S	10.246000	1.900000	3.657000
S	2.555000	0.313000	10.776000
S	7.334000	5.192000	10.426000
S	10.160000	-1.935000	5.260000
P	5.133000	4.801000	-0.790000
S	4.241000	-2.568000	8.413000

S	2.253000	-0.459000	6.623000
P	4.856000	5.544000	13.639000
S	7.511000	4.991000	2.483000
S	2.535000	0.311000	2.654000
S	4.388000	-2.682000	5.038000
P	1.082000	-4.555000	6.641000
C	11.364000	4.274000	8.550000
H	10.371000	4.724000	8.379000
H	11.565000	3.603000	7.694000
C	9.563000	5.935000	0.835000
H	8.882000	5.748000	-0.016000
H	10.086000	4.985000	1.036000
C	4.233000	-3.478000	10.047000
H	4.609000	-4.478000	9.776000
C	4.389000	7.124000	0.592000
H	5.003000	6.708000	1.398000
C	8.018000	7.673000	1.823000
H	7.292000	7.550000	0.997000
H	7.437000	7.953000	2.721000
C	5.028000	7.372000	13.527000
C	11.338000	3.439000	9.824000
H	11.023000	4.073000	10.672000
C	3.184000	5.327000	14.375000
C	12.451000	5.356000	8.621000
H	12.195000	6.085000	9.416000
H	12.470000	5.922000	7.671000
C	14.175000	-1.038000	5.595000
H	14.817000	-0.149000	5.437000
H	13.494000	-1.101000	4.725000
C	4.062000	3.869000	-1.956000
C	6.596000	5.237000	-1.843000
C	9.874000	8.388000	0.247000
H	9.223000	8.322000	-0.647000
H	10.622000	9.174000	0.035000
C	4.235000	6.400000	-0.604000
C	13.793000	3.908000	10.196000
H	14.776000	3.433000	10.374000
H	13.605000	4.573000	11.064000
C	10.566000	-4.241000	3.796000
H	11.635000	-4.119000	4.064000
H	10.081000	-4.781000	4.627000
C	1.952000	4.400000	2.363000
H	2.458000	4.992000	1.576000

H	1.923000	3.350000	2.024000
C	8.730000	6.338000	2.053000
H	9.390000	6.423000	2.935000
C	6.439000	0.918000	12.701000
H	6.381000	-0.055000	12.183000
C	6.890000	6.540000	-2.270000
H	6.237000	7.376000	-2.005000
C	12.706000	2.823000	10.136000
H	12.664000	2.264000	11.090000
H	12.955000	2.095000	9.342000
C	2.766000	4.498000	3.655000
H	2.337000	3.821000	4.411000
N	7.369000	4.174000	-2.144000
C	5.177000	-2.833000	11.059000
H	6.195000	-2.760000	10.638000
H	4.836000	-1.798000	11.251000
C	8.570000	6.567000	10.670000
H	9.245000	6.502000	9.796000
C	8.033000	6.741000	-3.052000
H	8.289000	7.746000	-3.404000
C	13.826000	4.747000	8.914000
H	14.126000	4.104000	8.063000
H	14.589000	5.542000	8.996000
C	7.830000	1.100000	13.306000
H	8.600000	1.001000	12.520000
H	7.912000	2.125000	13.714000
C	3.073000	6.573000	8.744000
H	3.826000	6.619000	7.939000
H	3.548000	6.991000	9.652000
C	11.753000	3.013000	3.792000
H	12.419000	2.432000	4.454000
C	10.567000	7.039000	0.465000
H	11.314000	7.139000	1.276000
H	11.128000	6.739000	-0.440000
C	9.024000	8.778000	1.460000
H	8.485000	9.724000	1.271000
H	9.688000	8.965000	2.327000
C	2.950000	8.878000	-0.263000
H	2.447000	9.841000	-0.129000
C	0.529000	4.945000	2.569000
H	-0.019000	4.905000	1.609000
H	-0.018000	4.287000	3.271000
C	2.813000	-3.614000	10.595000

H	2.398000	-2.605000	10.777000
H	2.168000	-4.112000	9.850000
C	11.493000	4.374000	4.421000
H	10.755000	4.922000	3.806000
H	11.044000	4.247000	5.420000
C	-0.214000	-0.055000	10.609000
H	-0.053000	-0.620000	9.676000
H	-0.072000	-0.771000	11.442000
C	1.592000	5.003000	10.072000
H	1.995000	5.349000	11.044000
H	1.312000	3.946000	10.207000
C	3.773000	-3.797000	12.939000
H	3.800000	-4.415000	13.856000
H	3.385000	-2.803000	13.239000
C	9.875000	-2.040000	10.530000
H	9.153000	-1.300000	10.918000
C	11.054000	-4.279000	1.305000
H	10.915000	-4.848000	0.368000
H	12.148000	-4.184000	1.456000
C	13.353000	-0.839000	6.872000
H	12.624000	-1.661000	6.972000
C	2.803000	5.924000	4.207000
H	3.340000	6.573000	3.489000
H	3.369000	5.950000	5.155000
C	5.339000	1.005000	13.759000
H	5.342000	2.025000	14.191000
H	4.351000	0.846000	13.291000
C	9.368000	6.337000	11.957000
H	8.662000	6.289000	12.806000
H	9.872000	5.355000	11.915000
C	7.359000	0.576000	0.665000
H	7.753000	-0.249000	1.286000
C	5.183000	10.167000	13.240000
H	5.241000	11.256000	13.136000
C	8.831000	5.645000	-3.380000
H	9.730000	5.759000	-3.993000
C	-0.242000	-0.107000	5.392000
H	-0.356000	-1.202000	5.474000
H	0.288000	0.090000	4.442000
C	0.841000	1.049000	10.727000
H	0.784000	1.705000	9.841000
C	3.753000	8.359000	0.758000
H	3.884000	8.915000	1.692000

C	5.774000	-3.287000	2.669000
H	5.650000	-2.226000	2.386000
H	6.689000	-3.346000	3.286000
C	6.974000	0.141000	15.498000
H	7.144000	-0.634000	16.269000
H	7.031000	1.119000	16.017000
C	1.590000	-1.994000	1.396000
H	0.594000	-1.509000	1.418000
H	1.703000	-2.515000	2.363000
C	2.828000	-4.418000	11.906000
H	3.145000	-5.458000	11.691000
H	1.801000	-4.483000	12.309000
C	5.895000	8.121000	14.338000
H	6.512000	7.624000	15.094000
C	5.187000	-3.632000	12.371000
H	5.844000	-3.130000	13.105000
H	5.632000	-4.631000	12.188000
C	9.352000	-3.452000	10.783000
H	10.022000	-4.178000	10.283000
H	8.357000	-3.570000	10.321000
C	2.688000	5.117000	9.014000
H	2.359000	4.637000	8.075000
C	8.065000	0.072000	14.425000
H	9.063000	0.234000	14.873000
H	8.083000	-0.944000	13.987000
C	9.938000	-2.852000	3.646000
H	8.851000	-2.950000	3.494000
C	4.285000	3.832000	-3.345000
H	5.171000	4.304000	-3.777000
C	3.420000	6.926000	-1.624000
H	3.272000	6.365000	-2.552000
C	9.029000	6.793000	6.097000
H	8.921000	6.590000	5.017000
H	9.371000	5.853000	6.560000
C	0.756000	1.942000	6.504000
H	1.323000	2.209000	5.594000
H	1.355000	2.290000	7.365000
C	5.582000	-0.020000	14.879000
H	4.797000	0.086000	15.651000
H	5.475000	-1.042000	14.467000
C	8.455000	4.383000	-2.901000
H	9.056000	3.494000	-3.132000
C	1.374000	6.457000	4.409000

H	0.873000	5.863000	5.199000
H	1.416000	7.497000	4.780000
C	7.668000	7.184000	6.659000
H	7.744000	7.288000	7.754000
C	12.397000	3.132000	2.409000
H	11.694000	3.639000	1.722000
H	12.588000	2.127000	1.988000
C	-0.620000	2.628000	6.478000
H	-0.484000	3.723000	6.401000
H	-1.138000	2.447000	7.441000
C	2.920000	3.241000	-1.429000
H	2.745000	3.246000	-0.347000
C	12.803000	5.174000	4.514000
H	12.601000	6.174000	4.942000
H	13.485000	4.666000	5.223000
C	10.448000	-5.040000	2.488000
H	10.939000	-6.023000	2.612000
H	9.379000	-5.249000	2.286000
C	2.512000	-0.184000	-0.090000
H	3.291000	0.589000	-0.191000
H	1.537000	0.343000	-0.093000
C	14.245000	-0.798000	8.117000
H	13.616000	-0.695000	9.020000
H	14.892000	0.100000	8.069000
C	1.656000	-2.985000	0.222000
H	0.866000	-3.751000	0.329000
H	2.622000	-3.529000	0.259000
N	7.277000	4.968000	14.667000
H	6.941000	-0.487000	9.340000
C	8.498000	1.283000	-0.070000
H	9.263000	1.615000	0.655000
H	8.094000	2.186000	-0.564000
C	2.660000	-0.909000	1.250000
H	3.659000	-1.372000	1.307000
C	13.489000	5.305000	3.149000
H	12.861000	5.928000	2.484000
H	14.454000	5.834000	3.255000
C	9.295000	-3.762000	12.287000
H	8.944000	-4.800000	12.437000
H	8.542000	-3.106000	12.767000
C	13.706000	3.934000	2.500000
H	14.440000	3.358000	3.098000
H	14.145000	4.048000	1.491000

C	5.988000	5.088000	15.038000
C	10.438000	-2.882000	1.172000
H	9.368000	-2.980000	0.897000
H	10.921000	-2.321000	0.351000
C	10.552000	-2.078000	2.478000
H	11.620000	-1.885000	2.702000
H	10.066000	-1.091000	2.376000
C	9.124000	0.356000	-1.125000
H	9.917000	0.905000	-1.668000
H	9.623000	-0.494000	-0.622000
C	7.158000	8.500000	6.067000
H	6.183000	8.769000	6.513000
H	6.987000	8.365000	4.982000
C	0.363000	5.843000	9.692000
H	-0.394000	5.766000	10.495000
H	-0.104000	5.417000	8.781000
C	15.118000	-2.059000	8.209000
H	15.780000	-1.992000	9.093000
H	14.465000	-2.940000	8.372000
C	7.878000	7.934000	10.685000
H	7.319000	8.091000	9.746000
H	7.136000	7.951000	11.503000
C	11.241000	-1.817000	11.187000
H	11.569000	-0.775000	11.023000
H	11.986000	-2.469000	10.691000
C	15.943000	-2.269000	6.934000
H	16.531000	-3.201000	7.006000
H	16.675000	-1.442000	6.833000
C	8.184000	9.623000	6.297000
H	7.822000	10.560000	5.833000
H	8.264000	9.823000	7.384000
C	-1.638000	0.524000	10.657000
H	-1.809000	1.150000	9.758000
H	-2.377000	-0.295000	10.611000
C	-1.869000	1.366000	11.915000
H	-2.882000	1.809000	11.902000
H	-1.825000	0.708000	12.806000
C	15.046000	-2.298000	5.691000
H	15.657000	-2.401000	4.775000
H	14.389000	-3.190000	5.733000
C	2.782000	8.157000	-1.452000
H	2.146000	8.552000	-2.250000
C	2.224000	2.585000	-3.657000

H	1.505000	2.091000	-4.320000
C	2.001000	2.614000	-2.275000
H	1.111000	2.139000	-1.849000
C	2.503000	6.373000	15.027000
H	2.934000	7.378000	15.050000
C	0.600000	0.424000	6.553000
H	0.126000	0.137000	7.509000
C	0.714000	4.848000	15.626000
H	-0.249000	4.663000	16.114000
C	8.071000	-0.178000	-2.102000
H	8.536000	-0.869000	-2.829000
H	7.654000	0.666000	-2.686000
C	8.905000	9.058000	10.894000
H	8.385000	10.033000	10.929000
H	9.588000	9.097000	10.021000
C	1.838000	7.411000	8.376000
H	2.139000	8.466000	8.229000
H	1.439000	7.065000	7.403000
C	11.192000	-2.137000	12.689000
H	12.201000	-2.016000	13.125000
H	10.542000	-1.397000	13.198000
C	-1.618000	0.581000	5.378000
H	-2.204000	0.212000	4.516000
H	-2.183000	0.291000	6.286000
C	0.611000	1.877000	11.996000
H	1.365000	2.678000	12.064000
H	0.772000	1.218000	12.873000
C	3.371000	3.187000	-4.186000
H	3.556000	3.161000	-5.265000
C	10.658000	-3.549000	12.954000
H	10.588000	-3.734000	14.041000
H	11.378000	-4.292000	12.555000
C	-1.763000	-4.771000	6.599000
H	-1.647000	-5.538000	5.827000
C	0.740000	7.305000	9.438000
H	-0.150000	7.884000	9.129000
H	1.095000	7.759000	10.385000
N	0.323000	-4.548000	4.071000
H	7.155000	-0.724000	4.205000
Cu	2.608000	-2.914000	6.616000
C	2.570000	-1.165000	-1.271000
H	2.430000	-0.614000	-2.219000
H	3.580000	-1.617000	-1.318000

H	6.295000	-6.962000	10.739000
C	7.456000	-8.299000	9.459000
H	6.541000	-8.695000	8.974000
C	4.588000	-3.744000	3.514000
H	3.650000	-3.590000	2.953000
C	-0.809000	2.462000	12.044000
H	-0.947000	3.033000	12.981000
H	-0.933000	3.191000	11.218000
C	10.052000	7.916000	6.324000
H	10.235000	8.028000	7.410000
H	11.020000	7.627000	5.875000
C	1.384000	3.805000	14.978000
H	0.950000	2.801000	14.958000
C	8.586000	-8.232000	8.426000
H	9.129000	-7.146000	6.609000
C	4.245000	8.039000	12.565000
H	3.571000	7.464000	11.922000
C	0.550000	6.376000	3.119000
H	-0.480000	6.735000	3.298000
H	0.994000	7.051000	2.360000
C	5.971000	9.511000	14.191000
H	6.647000	10.086000	14.833000
H	8.758000	-9.227000	7.975000
H	6.728000	-4.880000	9.381000
H	7.402000	-7.528000	6.737000
C	4.860000	-6.100000	2.665000
H	4.984000	-7.156000	2.973000
H	3.928000	-6.056000	2.066000
C	4.708000	-5.216000	3.913000
H	3.819000	-5.522000	4.493000
H	5.587000	-5.339000	4.571000
C	9.567000	9.250000	5.748000
H	10.294000	10.053000	5.968000
H	9.510000	9.173000	4.645000
C	5.549000	4.883000	16.355000
H	4.493000	4.998000	16.617000
H	9.530000	-7.952000	8.935000
H	7.712000	-9.011000	10.265000
H	5.942000	-6.140000	8.417000
C	-0.813000	-3.141000	8.121000
H	0.060000	-2.631000	8.541000
C	1.270000	6.132000	15.640000
H	0.743000	6.953000	16.138000

C	6.301000	0.046000	-0.300000
H	5.817000	0.903000	-0.806000
H	5.514000	-0.485000	0.261000
C	6.935000	-0.880000	-1.352000
H	7.326000	-1.789000	-0.854000
H	6.154000	-1.220000	-2.056000
C	1.525000	-2.276000	-1.130000
H	1.623000	-3.005000	-1.957000
H	0.510000	-1.839000	-1.214000
C	8.173000	4.645000	15.610000
H	9.215000	4.565000	15.272000
C	10.393000	7.460000	12.174000
H	10.932000	7.292000	13.125000
H	11.156000	7.421000	11.371000
C	7.836000	4.413000	16.949000
H	8.608000	4.141000	17.675000
C	9.725000	8.840000	12.172000
H	10.484000	9.636000	12.282000
H	9.052000	8.919000	13.049000
C	2.608000	4.044000	14.346000
H	3.123000	3.229000	13.826000
C	4.315000	9.426000	12.429000
H	3.690000	9.932000	11.684000
C	5.931000	-4.173000	1.423000
H	5.057000	-4.026000	0.758000
H	6.818000	-3.848000	0.848000
C	6.044000	-5.655000	1.799000
H	6.108000	-6.278000	0.888000
H	6.986000	-5.815000	2.359000
C	-1.487000	2.107000	5.326000
H	-2.486000	2.582000	5.352000
H	-1.024000	2.402000	4.364000
C	-3.047000	-4.436000	7.043000
H	-3.917000	-4.941000	6.612000
C	-2.098000	-2.817000	8.570000
H	-2.225000	-2.054000	9.343000
C	1.522000	-5.955000	7.754000
C	0.575000	-6.604000	8.567000
H	-0.465000	-6.264000	8.574000
C	0.954000	-7.684000	9.370000
H	0.205000	-8.175000	10.001000
C	2.276000	-8.138000	9.364000
H	2.571000	-8.988000	9.989000

C	3.224000	-7.496000	8.558000
H	4.262000	-7.842000	8.554000
C	2.857000	-6.404000	7.768000
H	3.613000	-5.891000	7.160000
C	6.496000	4.534000	17.325000
H	6.189000	4.366000	18.364000
C	1.002000	-6.758000	4.779000
H	1.374000	-7.411000	5.574000
C	0.701000	-7.270000	3.511000
H	0.851000	-8.334000	3.295000
C	0.793000	-5.391000	5.010000
C	-0.635000	-4.124000	7.134000
C	0.191000	-6.410000	2.539000
H	-0.073000	-6.769000	1.540000
C	0.016000	-5.060000	2.873000
H	-0.389000	-4.352000	2.141000
C	-3.217000	-3.461000	8.030000
H	-4.222000	-3.200000	8.376000
C	7.158000	-6.915000	10.047000
S	7.679000	-4.622000	6.532000
H	8.023000	-6.578000	10.652000
C	8.010000	-5.822000	7.922000
C	8.287000	-7.205000	7.322000
C	6.879000	-5.881000	8.945000
H	8.928000	-5.461000	8.417000
H	8.928000	3.365000	6.647000
H	6.815000	-1.446000	6.813000
H	8.447000	0.691000	6.789000
H	4.925000	0.914000	8.292000
H	5.095000	0.714000	4.973000
H	3.908000	2.615000	6.459000

Table S6. The coordinate of the optimized geometry of $\text{Cu}_{29}\text{-P(Ph-Me)}_3^{\text{T}}$

P	-6.548000	15.946000	40.726000
S	-1.810000	11.251000	33.289000
S	-3.742000	14.971000	34.478000
S	-4.692000	13.043000	38.356000
S	-2.855000	14.173000	40.992000
S	-4.002000	10.204000	41.475000
S	-1.953000	7.856000	38.389000
C	3.228000	10.442000	32.646000
H	2.875000	9.503000	32.186000

C	4.192000	10.125000	33.786000
H	3.693000	9.482000	34.529000
H	4.455000	11.067000	34.300000
C	5.469000	9.456000	33.252000
H	6.166000	9.274000	34.092000
H	5.217000	8.461000	32.833000
C	6.139000	10.312000	32.171000
H	6.487000	11.260000	32.628000
H	7.036000	9.801000	31.773000
C	5.158000	10.631000	31.037000
H	4.881000	9.694000	30.513000
H	5.634000	11.283000	30.281000
C	3.880000	11.308000	31.566000
H	4.132000	12.292000	32.004000
H	3.170000	11.478000	30.738000
C	0.445000	6.385000	33.449000
H	-0.050000	6.360000	32.457000
C	1.909000	6.772000	33.247000
H	2.381000	6.904000	34.239000
H	1.957000	7.752000	32.744000
C	2.667000	5.708000	32.439000
H	2.259000	5.675000	31.408000
H	3.731000	5.999000	32.344000
C	2.540000	4.320000	33.074000
H	3.056000	4.322000	34.055000
H	3.052000	3.563000	32.450000
C	1.069000	3.935000	33.279000
H	0.998000	2.955000	33.790000
H	0.584000	3.807000	32.290000
C	0.310000	4.999000	34.088000
H	-0.759000	4.728000	34.176000
H	0.711000	5.042000	35.118000
C	3.197000	7.050000	37.990000
H	3.592000	6.923000	39.014000
C	3.033000	5.682000	37.332000
H	2.373000	5.044000	37.938000
H	2.536000	5.821000	36.354000
C	4.396000	5.003000	37.127000
H	4.247000	4.032000	36.619000
H	4.841000	4.772000	38.116000
C	5.356000	5.892000	36.331000
H	6.345000	5.407000	36.236000
H	4.967000	6.018000	35.301000

C	5.500000	7.271000	36.983000
H	6.145000	7.923000	36.368000
H	6.010000	7.162000	37.962000
C	4.137000	7.948000	37.193000
H	4.253000	8.921000	37.699000
H	3.675000	8.160000	36.212000
C	-0.570000	9.175000	42.860000
H	-1.238000	10.053000	42.884000
C	-1.309000	7.976000	43.459000
H	-0.696000	7.066000	43.322000
H	-2.258000	7.822000	42.917000
C	-1.580000	8.194000	44.956000
H	-2.295000	9.033000	45.075000
H	-2.071000	7.298000	45.378000
C	-0.291000	8.511000	45.724000
H	0.376000	7.625000	45.694000
H	-0.517000	8.701000	46.791000
C	0.439000	9.710000	45.108000
H	1.392000	9.901000	45.637000
H	-0.179000	10.620000	45.238000
C	0.719000	9.493000	43.612000
H	1.201000	10.382000	43.173000
H	1.434000	8.660000	43.483000
C	5.217000	8.814000	41.107000
H	5.355000	8.679000	40.021000
C	5.007000	7.444000	41.759000
H	4.130000	6.945000	41.311000
H	4.769000	7.599000	42.831000
C	6.255000	6.558000	41.630000
H	6.426000	6.321000	40.561000
H	6.083000	5.590000	42.138000
C	7.499000	7.250000	42.202000
H	7.378000	7.367000	43.297000
H	8.394000	6.616000	42.052000
C	7.707000	8.629000	41.566000
H	7.958000	8.503000	40.494000
H	8.572000	9.139000	42.032000
C	6.453000	9.505000	41.694000
H	6.256000	9.724000	42.762000
H	6.603000	10.476000	41.194000
C	6.110000	11.985000	37.319000
H	5.649000	11.516000	36.433000
C	7.119000	13.046000	36.874000

H	7.495000	13.559000	37.779000
H	6.619000	13.797000	36.238000
C	8.303000	12.407000	36.130000
H	9.028000	13.191000	35.841000
H	7.939000	11.953000	35.185000
C	8.988000	11.331000	36.982000
H	9.452000	11.808000	37.868000
H	9.806000	10.849000	36.415000
C	7.975000	10.280000	37.448000
H	8.457000	9.535000	38.109000
H	7.601000	9.720000	36.569000
C	6.787000	10.921000	38.181000
H	6.051000	10.156000	38.477000
H	7.143000	11.396000	39.114000
C	0.937000	10.858000	28.952000
C	1.775000	11.045000	27.840000
H	1.818000	12.022000	27.345000
C	2.567000	9.995000	27.366000
H	3.218000	10.163000	26.499000
C	2.553000	8.733000	27.983000
C	1.704000	8.552000	29.088000
H	1.674000	7.576000	29.589000
C	0.914000	9.597000	29.575000
H	0.286000	9.437000	30.458000
C	3.447000	7.624000	27.498000
H	-1.977000	11.193000	39.240000
H	0.261000	14.290000	39.125000
H	1.686000	11.051000	39.379000
H	3.080000	6.637000	27.823000
H	4.471000	7.743000	27.898000
H	3.526000	7.618000	26.398000
C	0.697000	3.499000	39.365000
C	1.897000	2.876000	39.741000
H	2.327000	3.066000	40.731000
C	2.558000	2.012000	38.858000
H	3.497000	1.541000	39.176000
C	2.048000	1.735000	37.583000
C	0.840000	2.357000	37.215000
H	0.414000	2.166000	36.222000
C	0.182000	3.231000	38.080000
H	-0.743000	3.715000	37.751000
H	3.088000	1.358000	35.723000
C	-7.333000	15.058000	42.126000

C	-8.619000	15.369000	42.611000
H	-9.230000	16.126000	42.106000
C	-5.756000	2.399000	41.585000
H	-6.403000	2.489000	40.692000
H	-5.724000	1.331000	41.858000
C	-1.807000	3.994000	40.718000
C	-2.087000	2.629000	40.525000
H	-1.313000	1.957000	40.142000
C	-3.358000	2.121000	40.813000
H	-3.558000	1.054000	40.655000
C	-4.382000	2.945000	41.307000
C	-4.092000	4.307000	41.499000
H	-4.872000	4.976000	41.880000
C	-2.831000	4.828000	41.202000
H	-2.637000	5.897000	41.340000
H	-6.251000	2.948000	42.402000
C	-9.129000	14.710000	43.733000
H	-10.130000	14.967000	44.097000
C	-8.383000	13.725000	44.403000
C	2.817000	4.257000	45.824000
H	2.995000	5.246000	46.279000
H	2.273000	3.634000	46.553000
C	0.690000	4.572000	42.050000
C	0.471000	3.478000	42.907000
H	-0.246000	2.699000	42.629000
C	1.153000	3.384000	44.123000
H	0.965000	2.527000	44.780000
C	2.066000	4.374000	44.525000
C	2.272000	5.467000	43.667000
H	2.965000	6.262000	43.963000
C	1.592000	5.572000	42.450000
H	1.750000	6.448000	41.812000
H	3.806000	3.787000	45.665000
C	-7.110000	13.410000	43.905000
H	-6.510000	12.635000	44.395000
C	-6.596000	14.057000	42.777000
C	-5.074000	21.629000	42.691000
H	-5.504000	22.384000	42.006000
H	-5.449000	21.850000	43.704000
Cu	-0.062000	12.271000	37.578000
Cu	1.277000	11.205000	35.532000
Cu	2.617000	12.376000	37.308000
Cu	-0.254000	10.873000	39.835000

Cu	-0.091000	12.182000	31.902000
Cu	-0.033000	9.759000	33.895000
Cu	0.321000	8.322000	36.344000
Cu	1.388000	10.212000	37.822000
Cu	3.533000	11.535000	39.816000
Cu	1.890000	9.360000	40.190000
Cu	-0.196000	6.800000	39.584000
P	-0.080000	12.201000	29.686000
P	-0.152000	4.742000	40.423000
S	1.660000	11.257000	33.273000
S	-0.558000	7.636000	34.391000
S	1.535000	7.861000	38.267000
S	-0.278000	8.883000	41.032000
S	3.730000	9.894000	41.376000
S	4.685000	12.786000	38.228000
C	0.621000	13.740000	28.968000
C	0.102000	14.376000	27.826000
H	-0.769000	13.953000	27.316000
C	0.687000	15.549000	27.341000
H	0.263000	16.031000	26.452000
C	1.802000	16.124000	27.974000
C	2.315000	15.483000	29.113000
H	3.180000	15.914000	29.629000
C	1.733000	14.315000	29.611000
H	2.137000	13.849000	30.517000
H	2.560000	17.365000	26.367000
H	-0.017000	12.312000	40.812000
H	2.567000	10.779000	36.642000
H	-2.646000	10.724000	36.635000
H	-0.003000	10.182000	36.465000
H	-1.403000	13.014000	36.537000
H	1.910000	13.622000	36.213000
C	-1.729000	12.023000	28.898000
C	-1.938000	11.300000	27.711000
H	-1.092000	10.821000	27.207000
C	-3.225000	11.163000	27.183000
H	-3.370000	10.586000	26.262000
C	-4.338000	11.742000	27.814000
C	-4.121000	12.464000	29.000000
H	-4.975000	12.916000	29.519000
C	-2.840000	12.601000	29.539000
H	-2.699000	13.143000	30.481000
H	-6.500000	11.795000	27.976000

C	-10.944000	16.752000	36.456000
H	-11.350000	17.777000	36.422000
H	-10.488000	16.552000	35.467000
C	2.761000	0.815000	36.629000
H	3.653000	0.363000	37.092000
H	2.102000	-0.005000	36.291000
C	-0.061000	15.886000	32.635000
H	0.888000	16.015000	32.086000
C	-0.138000	16.911000	33.762000
H	0.716000	16.783000	34.447000
H	-1.051000	16.720000	34.353000
C	-0.176000	18.339000	33.194000
H	-0.269000	19.063000	34.025000
H	0.786000	18.560000	32.691000
C	-1.328000	18.513000	32.198000
H	-2.290000	18.405000	32.738000
H	-1.318000	19.532000	31.767000
C	-1.257000	17.464000	31.082000
H	-0.349000	17.635000	30.470000
H	-2.119000	17.568000	30.396000
C	-1.221000	16.034000	31.648000
H	-2.166000	15.815000	32.177000
H	-1.115000	15.301000	30.829000
C	4.809000	15.580000	33.320000
H	4.974000	15.147000	32.313000
C	3.737000	16.661000	33.216000
H	3.480000	17.002000	34.236000
H	2.818000	16.223000	32.794000
C	4.208000	17.854000	32.370000
H	4.342000	17.529000	31.318000
H	3.424000	18.634000	32.357000
C	5.530000	18.429000	32.892000
H	5.363000	18.865000	33.897000
H	5.872000	19.257000	32.243000
C	6.607000	17.342000	32.984000
H	7.539000	17.760000	33.413000
H	6.862000	16.993000	31.964000
C	6.137000	16.150000	33.831000
H	6.904000	15.354000	33.842000
H	5.998000	16.469000	34.882000
C	3.098000	17.768000	37.922000
H	3.080000	18.203000	38.938000
C	4.368000	18.214000	37.201000

H	5.259000	17.921000	37.775000
H	4.424000	17.683000	36.232000
C	4.364000	19.734000	36.961000
H	5.271000	20.016000	36.396000
H	4.431000	20.256000	37.937000
C	3.102000	20.192000	36.222000
H	3.096000	21.294000	36.114000
H	3.109000	19.775000	35.195000
C	1.835000	19.719000	36.944000
H	0.933000	20.004000	36.373000
H	1.759000	20.230000	37.925000
C	1.847000	18.198000	37.164000
H	0.946000	17.865000	37.705000
H	1.832000	17.681000	36.186000
C	2.899000	13.358000	42.705000
H	2.443000	12.354000	42.709000
C	4.306000	13.266000	43.297000
H	4.810000	14.246000	43.190000
H	4.893000	12.523000	42.731000
C	4.245000	12.874000	44.782000
H	3.847000	11.843000	44.865000
H	5.268000	12.852000	45.202000
C	3.358000	13.833000	45.584000
H	3.822000	14.839000	45.588000
H	3.297000	13.507000	46.639000
C	1.957000	13.928000	44.971000
H	1.335000	14.658000	45.525000
H	1.448000	12.948000	45.068000
C	2.014000	14.326000	43.487000
H	1.002000	14.347000	43.051000
H	2.416000	15.351000	43.390000
C	0.266000	18.581000	40.938000
H	0.294000	18.765000	39.850000
C	1.559000	19.102000	41.573000
H	2.432000	18.614000	41.106000
H	1.565000	18.807000	42.641000
C	1.673000	20.629000	41.456000
H	1.774000	20.906000	40.387000
H	2.599000	20.974000	41.955000
C	0.448000	21.336000	42.048000
H	0.416000	21.157000	43.142000
H	0.529000	22.431000	41.911000
C	-0.847000	20.812000	41.418000

H	-0.873000	21.097000	40.346000
H	-1.727000	21.287000	41.890000
C	-0.952000	19.286000	41.543000
H	-1.023000	19.004000	42.612000
H	-1.871000	18.910000	41.063000
C	-2.969000	17.556000	37.102000
H	-2.451000	17.226000	36.187000
C	-4.393000	17.984000	36.737000
H	-4.950000	18.230000	37.661000
H	-4.920000	17.148000	36.251000
C	-4.362000	19.212000	35.814000
H	-5.396000	19.523000	35.573000
H	-3.888000	18.926000	34.854000
C	-3.583000	20.371000	36.445000
H	-4.122000	20.722000	37.349000
H	-3.540000	21.233000	35.752000
C	-2.168000	19.934000	36.842000
H	-1.632000	20.759000	37.348000
H	-1.588000	19.700000	35.928000
C	-2.191000	18.697000	37.753000
H	-1.168000	18.365000	37.992000
H	-2.669000	18.960000	38.715000
C	7.310000	17.120000	39.255000
C	7.425000	18.462000	39.651000
H	7.129000	18.762000	40.661000
C	7.906000	19.428000	38.759000
H	7.971000	20.472000	39.089000
C	8.299000	19.091000	37.456000
C	8.183000	17.745000	37.068000
H	8.462000	17.451000	36.049000
C	7.690000	16.777000	37.943000
H	7.580000	15.747000	37.594000
C	8.832000	20.126000	36.502000
C	2.403000	17.404000	27.459000
H	1.738000	18.264000	27.659000
H	3.374000	17.616000	27.935000
H	8.570000	19.882000	35.458000
H	9.935000	20.188000	36.557000
H	8.436000	21.130000	36.729000
C	8.087000	14.752000	40.702000
C	9.404000	15.139000	40.402000
H	9.596000	16.100000	39.913000
C	10.477000	14.304000	40.727000

H	11.498000	14.623000	40.485000
C	10.277000	13.069000	41.363000
C	8.957000	12.692000	41.663000
H	8.771000	11.734000	42.161000
C	7.877000	13.510000	41.327000
H	6.857000	13.185000	41.556000
C	11.435000	12.166000	41.689000
Cu	-2.186000	13.437000	34.017000
Cu	-3.834000	14.243000	36.587000
Cu	-2.634000	12.113000	37.724000
H	11.230000	11.548000	42.579000
H	12.358000	12.740000	41.873000
H	11.642000	11.473000	40.852000
C	6.325000	16.677000	41.936000
C	7.362000	16.977000	42.839000
H	8.386000	16.654000	42.621000
C	7.095000	17.678000	44.016000
H	7.918000	17.895000	44.710000
C	5.793000	18.101000	44.336000
C	4.763000	17.788000	43.434000
H	3.736000	18.091000	43.664000
C	5.019000	17.083000	42.254000
H	4.192000	16.828000	41.582000
C	5.518000	18.869000	45.600000
H	4.436000	18.944000	45.799000
H	5.918000	19.897000	45.535000
H	5.995000	18.392000	46.474000
Cu	-2.472000	9.449000	39.996000
Cu	-3.475000	11.954000	40.160000
Cu	-4.806000	14.884000	39.832000
Cu	-0.064000	13.845000	35.544000
Cu	-1.350000	14.592000	37.548000
Cu	1.277000	12.846000	39.692000
Cu	2.158000	13.454000	34.279000
Cu	3.473000	14.638000	36.360000
Cu	1.192000	14.591000	37.601000
Cu	-1.440000	15.847000	39.866000
Cu	1.469000	15.459000	39.978000
Cu	4.835000	14.750000	39.537000
P	6.619000	15.804000	40.345000
S	0.051000	14.136000	33.285000
S	4.328000	14.120000	34.362000
S	3.108000	15.925000	38.238000

S	3.002000	13.799000	40.887000
S	0.101000	16.752000	41.217000
S	-3.022000	16.031000	38.192000
C	-3.286000	10.261000	32.680000
H	-3.923000	11.021000	32.194000
C	-4.047000	9.619000	33.835000
H	-4.365000	10.394000	34.550000
H	-3.364000	8.942000	34.379000
C	-5.259000	8.827000	33.318000
H	-5.766000	8.337000	34.171000
H	-5.997000	9.525000	32.873000
C	-4.843000	7.789000	32.270000
H	-4.201000	7.026000	32.754000
H	-5.731000	7.256000	31.881000
C	-4.070000	8.446000	31.122000
H	-4.742000	9.132000	30.569000
H	-3.735000	7.685000	30.392000
C	-2.852000	9.235000	31.632000
H	-2.122000	8.545000	32.093000
H	-2.350000	9.745000	30.792000
C	-5.295000	14.732000	33.479000
H	-5.024000	15.154000	32.490000
C	-5.707000	13.274000	33.283000
H	-5.874000	12.813000	34.274000
H	-4.874000	12.722000	32.819000
C	-6.977000	13.156000	32.429000
H	-6.759000	13.511000	31.401000
H	-7.270000	12.093000	32.336000
C	-8.130000	13.985000	33.010000
H	-8.434000	13.553000	33.984000
H	-9.017000	13.925000	32.350000
C	-7.715000	15.448000	33.210000
H	-8.535000	16.020000	33.685000
H	-7.541000	15.915000	32.219000
C	-6.441000	15.570000	34.061000
H	-6.129000	16.628000	34.137000
H	-6.646000	15.226000	35.093000
C	-6.239000	12.061000	37.993000
H	-6.646000	11.853000	38.999000
C	-7.233000	12.905000	37.199000
H	-7.448000	13.847000	37.728000
H	-6.761000	13.184000	36.240000
C	-8.528000	12.122000	36.933000

H	-9.211000	12.740000	36.321000
H	-9.048000	11.940000	37.894000
C	-8.248000	10.783000	36.241000
H	-9.186000	10.213000	36.110000
H	-7.852000	10.975000	35.224000
C	-7.223000	9.955000	37.026000
H	-6.983000	9.023000	36.484000
H	-7.664000	9.646000	37.995000
C	-5.932000	10.747000	37.284000
H	-5.214000	10.153000	37.875000
H	-5.434000	10.970000	36.324000
C	-2.364000	14.351000	42.796000
H	-1.270000	14.481000	42.745000
C	-2.981000	15.619000	43.387000
H	-4.085000	15.552000	43.339000
H	-2.680000	16.493000	42.784000
C	-2.536000	15.794000	44.849000
H	-1.443000	15.977000	44.870000
H	-3.015000	16.694000	45.277000
C	-2.863000	14.556000	45.692000
H	-3.964000	14.438000	45.754000
H	-2.501000	14.691000	46.729000
C	-2.253000	13.291000	45.077000
H	-2.534000	12.396000	45.663000
H	-1.149000	13.359000	45.123000
C	-2.690000	13.104000	43.613000
H	-2.202000	12.221000	43.168000
H	-3.777000	12.907000	43.575000
C	-5.675000	9.475000	41.123000
H	-5.814000	9.441000	40.030000
C	-6.769000	10.346000	41.746000
H	-6.735000	11.361000	41.314000
H	-6.552000	10.462000	42.826000
C	-8.163000	9.728000	41.566000
H	-8.423000	9.715000	40.488000
H	-8.921000	10.365000	42.062000
C	-8.220000	8.298000	42.118000
H	-8.076000	8.329000	43.217000
H	-9.218000	7.853000	41.942000
C	-7.125000	7.423000	41.495000
H	-7.330000	7.292000	40.414000
H	-7.141000	6.409000	41.940000
C	-5.733000	8.047000	41.677000

H	-5.475000	8.077000	42.754000
H	-4.960000	7.434000	41.183000
C	-3.264000	7.002000	37.371000
H	-3.372000	7.628000	36.470000
C	-2.784000	5.608000	36.962000
H	-2.593000	5.025000	37.883000
H	-1.832000	5.691000	36.412000
C	-3.844000	4.888000	36.114000
H	-3.490000	3.872000	35.858000
H	-3.969000	5.428000	35.154000
C	-5.193000	4.816000	36.840000
H	-5.089000	4.176000	37.739000
H	-5.954000	4.337000	36.195000
C	-5.662000	6.211000	37.271000
H	-6.608000	6.148000	37.841000
H	-5.878000	6.818000	36.370000
C	-4.596000	6.926000	38.117000
H	-4.929000	7.939000	38.396000
H	-4.441000	6.370000	39.060000
C	-7.947000	16.262000	39.569000
C	-8.915000	15.269000	39.339000
H	-8.913000	14.349000	39.935000
C	-9.892000	15.442000	38.354000
H	-10.635000	14.650000	38.192000
C	-9.927000	16.594000	37.554000
C	-8.966000	17.588000	37.800000
H	-8.978000	18.509000	37.203000
C	-7.991000	17.430000	38.787000
H	-7.259000	18.228000	38.954000
H	-11.788000	16.053000	36.580000
H	-0.065000	15.282000	36.583000
Cu	-1.466000	11.405000	35.557000
Cu	-1.396000	9.914000	37.589000
C	-8.950000	13.001000	45.595000
H	-9.662000	13.631000	46.153000
H	-9.494000	12.091000	45.279000
C	-6.137000	17.616000	41.392000
C	-5.100000	18.330000	40.768000
H	-4.527000	17.855000	39.965000
C	-4.775000	19.624000	41.181000
H	-3.968000	20.162000	40.672000
C	-5.439000	20.236000	42.254000
C	-6.450000	19.505000	42.897000

H	-6.973000	19.950000	43.751000
C	-6.803000	18.221000	42.470000
H	-7.597000	17.686000	43.000000
H	-3.981000	21.778000	42.689000
H	-5.613000	13.771000	42.388000
H	-8.155000	12.679000	46.288000
Cu	-1.173000	13.187000	39.820000
C	-5.716000	11.604000	27.225000
H	-5.865000	12.326000	26.400000
H	-5.879000	10.596000	26.806000

Table S7. The coordinate of the optimized geometry of $\text{Cu}_{29}\text{-P(Ph-Cl)}_3^{\text{T}}$

Cu	0.830000	1.469000	-1.925000
Cu	1.156000	3.877000	-1.225000
Cu	4.296000	3.911000	-2.094000
Cu	-3.352000	2.316000	1.452000
Cu	-5.587000	2.487000	-1.025000
Cu	3.606000	3.130000	0.680000
Cu	-1.257000	0.874000	4.630000
Cu	0.803000	-0.446000	6.193000
Cu	-1.057000	-1.927000	0.275000
Cu	-0.264000	-0.768000	-2.010000
Cu	2.623000	0.817000	-0.103000
Cu	1.548000	-1.498000	-0.192000
Cu	-1.804000	1.210000	-1.708000
Cu	0.751000	-3.741000	0.987000
Cu	1.938000	-1.893000	-2.795000
Cu	-2.575000	0.061000	0.536000
Cu	-0.944000	-0.751000	2.539000
Cu	1.632000	-0.396000	2.055000
Cu	3.225000	0.804000	-2.920000
Cu	1.514000	1.494000	3.755000
Cu	-2.958000	3.512000	-1.172000
Cu	-0.851000	2.983000	0.078000
Cu	0.308000	-4.842000	-2.229000
Cu	-0.992000	1.921000	2.366000
Cu	-2.245000	-2.471000	-2.088000
Cu	1.257000	2.541000	1.406000
Cu	-4.237000	-0.170000	-1.777000
Cu	1.069000	-2.537000	3.615000
S	-1.276000	-4.152000	-0.508000
S	2.072000	-3.703000	-0.982000
Cl	0.474000	2.176000	5.752000

S	2.380000	2.899000	-3.138000
S	0.469000	-4.604000	3.073000
S	-0.894000	-1.352000	4.864000
S	2.306000	-0.772000	4.352000
S	-3.903000	1.965000	-2.611000
S	4.593000	1.904000	-0.929000
S	4.020000	-1.204000	-3.409000
S	-0.213000	-2.722000	-3.433000
S	-0.998000	4.667000	-1.600000
S	3.101000	2.948000	2.858000
S	-4.828000	0.732000	0.356000
S	-2.960000	2.096000	3.735000
S	-4.520000	-2.340000	-2.119000
Cl	2.838000	5.265000	-0.350000
Cl	-4.301000	4.342000	0.583000
P	0.486000	-6.846000	-3.250000
P	5.713000	5.512000	-2.750000
P	-7.532000	3.585000	-1.184000
P	1.133000	-0.388000	8.409000
Cl	-11.594000	1.145000	-5.471000
Cl	-11.006000	3.739000	4.174000
Cl	-2.549000	3.687000	11.680000
C	4.719000	-1.292000	-5.150000
C	4.120000	-1.119000	4.756000
C	4.728000	-3.314000	-0.152000
H	4.317000	-2.988000	0.819000
H	4.754000	-2.433000	-0.815000
C	-4.201000	2.459000	-4.428000
C	1.964000	3.498000	-4.881000
C	1.471000	-7.221000	3.010000
H	0.416000	-7.515000	2.849000
H	1.911000	-7.019000	2.018000
C	-1.096000	6.447000	-0.969000
C	1.570000	-8.093000	-2.425000
C	4.878000	-2.769000	-5.557000
H	5.503000	-3.292000	-4.809000
H	3.888000	-3.259000	-5.558000
C	8.471000	0.512000	-1.601000
H	8.915000	0.178000	-2.559000
C	2.112000	6.329000	5.955000
H	1.347000	5.676000	6.419000
H	2.125000	7.274000	6.534000
C	-2.526000	-5.336000	0.282000

C	8.654000	1.038000	1.291000
H	8.219000	1.375000	2.252000
H	9.702000	0.746000	1.498000
C	3.817000	-4.386000	-0.763000
C	4.833000	0.197000	5.103000
H	4.309000	0.699000	5.935000
H	4.804000	0.882000	4.237000
C	6.281000	-2.102000	3.955000
H	6.779000	-2.583000	3.092000
C	6.294000	-0.114000	5.498000
H	6.803000	0.837000	5.748000
C	3.269000	3.511000	-5.694000
H	3.995000	4.181000	-5.201000
H	3.711000	2.499000	-5.713000
C	4.550000	6.587000	5.396000
H	5.554000	6.121000	5.457000
H	4.600000	7.538000	5.961000
C	-1.954000	-3.315000	-7.210000
H	-2.834000	-3.930000	-7.479000
C	6.388000	6.154000	-0.096000
H	5.952000	5.183000	0.150000
C	1.579000	-8.652000	5.080000
H	0.528000	-8.971000	4.937000
H	2.105000	-9.485000	5.586000
C	7.149000	2.592000	0.009000
H	6.679000	2.953000	0.945000
H	7.117000	3.414000	-0.727000
C	6.308000	-3.048000	5.168000
H	7.354000	-3.293000	5.436000
H	5.806000	-4.003000	4.920000
C	2.204000	-9.234000	-0.364000
H	2.107000	-9.365000	0.716000
C	-5.343000	-4.295000	-3.930000
H	-4.289000	-4.418000	-4.236000
H	-5.496000	-4.924000	-3.034000
C	7.422000	8.210000	0.625000
C	-1.710000	-3.431000	-5.688000
H	-2.596000	-3.104000	-5.120000
H	-1.517000	-4.486000	-5.420000
C	-5.606000	-2.821000	-3.572000
C	1.154000	-6.853000	-4.974000
C	7.004000	0.918000	-1.851000
H	6.427000	0.068000	-2.254000

H	6.958000	1.733000	-2.595000
C	-0.761000	-1.110000	-5.662000
H	-1.636000	-0.740000	-5.100000
H	0.103000	-0.494000	-5.354000
C	7.418000	8.688000	-0.690000
H	7.810000	9.686000	-0.908000
C	8.617000	2.184000	0.265000
H	9.167000	3.060000	0.659000
C	2.235000	-8.362000	3.718000
H	2.196000	-9.272000	3.087000
C	-0.501000	-2.574000	-5.294000
C	-3.588000	3.831000	-4.733000
H	-2.496000	3.805000	-4.565000
H	-3.995000	4.596000	-4.047000
C	6.398000	0.250000	0.492000
H	5.926000	0.587000	1.434000
H	5.810000	-0.606000	0.120000
C	-8.580000	3.599000	0.333000
C	4.148000	-2.047000	5.980000
H	3.591000	-2.973000	5.757000
H	3.644000	-1.548000	6.826000
C	-2.215000	-1.845000	-7.581000
H	-2.400000	-1.758000	-8.670000
H	-3.124000	-1.477000	-7.071000
C	-6.164000	-0.220000	1.287000
C	-2.477000	7.021000	-1.338000
H	-3.271000	6.435000	-0.846000
H	-2.630000	6.944000	-2.432000
C	9.255000	1.719000	-1.056000
H	10.314000	1.442000	-0.887000
H	9.250000	2.543000	-1.795000
C	-8.030000	-3.126000	-4.237000
H	-9.075000	-3.018000	-3.886000
C	3.495000	5.655000	6.018000
H	3.760000	5.441000	7.073000
C	-0.997000	-0.994000	-7.183000
H	-1.179000	0.068000	-7.438000
C	8.509000	-0.634000	-0.577000
H	9.556000	-0.949000	-0.396000
H	7.969000	-1.514000	-0.973000
C	5.607000	-2.369000	6.358000
H	5.607000	-3.048000	7.234000
C	4.183000	6.862000	3.928000

H	4.944000	7.521000	3.466000
C	-1.800000	-6.632000	0.673000
H	-1.365000	-7.092000	-0.234000
H	-0.977000	-6.402000	1.369000
C	1.412000	4.928000	-4.800000
H	2.143000	5.580000	-4.290000
H	0.484000	4.942000	-4.201000
C	6.371000	1.387000	-0.533000
C	7.202000	4.852000	-3.614000
C	5.059000	6.784000	-3.913000
C	6.390000	6.602000	-1.426000
C	4.363000	-4.821000	-2.130000
H	4.366000	-3.961000	-2.820000
H	3.700000	-5.598000	-2.548000
C	2.483000	-8.902000	-3.127000
H	2.596000	-8.795000	-4.209000
C	-0.887000	6.535000	0.547000
H	0.092000	6.103000	0.814000
H	-1.660000	5.936000	1.058000
C	1.452000	-8.268000	-1.035000
H	0.767000	-7.637000	-0.460000
C	3.760000	-5.608000	0.158000
H	3.330000	-5.308000	1.128000
H	3.089000	-6.368000	-0.277000
C	-0.013000	7.258000	-1.702000
H	-0.171000	7.185000	-2.795000
H	0.983000	6.835000	-1.484000
C	0.939000	2.576000	-5.547000
H	0.010000	2.555000	-4.949000
H	1.325000	1.542000	-5.582000
C	-4.715000	4.152000	4.332000
H	-5.378000	3.363000	4.738000
H	-4.906000	4.219000	3.248000
C	6.910000	6.946000	0.931000
H	6.901000	6.597000	1.966000
C	6.147000	-3.896000	0.027000
H	6.798000	-3.122000	0.475000
C	-3.927000	1.773000	-6.825000
H	-3.487000	1.006000	-7.490000
C	4.816000	-1.796000	3.571000
H	4.778000	-1.134000	2.688000
H	4.284000	-2.726000	3.303000
C	6.899000	7.885000	-1.708000

H	6.882000	8.274000	-2.730000
C	-6.627000	0.608000	2.494000
H	-6.986000	1.596000	2.156000
H	-5.778000	0.783000	3.179000
C	-2.384000	6.064000	6.216000
H	-2.574000	7.030000	6.721000
H	-1.327000	5.798000	6.412000
C	6.701000	-4.314000	-1.348000
H	6.748000	-3.434000	-2.018000
H	7.732000	-4.703000	-1.242000
C	2.293000	-6.849000	-7.540000
C	-0.962000	8.011000	0.992000
H	-0.808000	8.061000	2.087000
C	1.700000	5.284000	3.703000
H	1.424000	5.464000	2.650000
H	0.939000	4.612000	4.134000
C	-5.265000	-5.995000	1.150000
H	-5.802000	-5.072000	0.862000
H	-6.009000	-6.675000	1.609000
C	7.867000	-0.165000	0.741000
H	7.883000	-0.992000	1.474000
C	0.732000	-3.091000	-6.043000
H	1.619000	-2.517000	-5.728000
H	0.914000	-4.144000	-5.772000
C	-4.086000	6.588000	4.435000
H	-4.258000	6.694000	3.347000
H	-4.310000	7.569000	4.898000
C	1.631000	-7.384000	5.949000
H	1.148000	-7.579000	6.927000
C	6.114000	-0.634000	-5.119000
H	6.746000	-1.135000	-4.363000
H	6.012000	0.421000	-4.804000
C	1.522000	-5.945000	3.868000
C	3.074000	4.608000	3.769000
C	-3.243000	3.769000	4.578000
C	-2.253000	-7.073000	-3.794000
H	-2.213000	-5.984000	-3.897000
C	6.328000	-1.056000	6.713000
H	7.378000	-1.263000	6.998000
H	5.843000	-0.580000	7.585000
C	-2.620000	6.199000	4.701000
H	-1.946000	6.970000	4.280000
C	1.746000	6.613000	4.487000

H	0.749000	7.092000	4.438000
C	1.140000	5.448000	-6.230000
H	0.744000	6.479000	-6.162000
C	6.773000	-0.722000	-6.510000
H	7.772000	-0.246000	-6.468000
C	7.026000	3.749000	-4.472000
H	6.033000	3.303000	-4.590000
C	2.369000	-6.188000	-5.223000
H	2.870000	-5.645000	-4.417000
C	0.874000	-6.245000	5.237000
H	-0.187000	-6.523000	5.090000
H	0.883000	-5.328000	5.855000
C	-7.343000	-0.436000	0.326000
H	-7.719000	0.547000	-0.012000
H	-6.997000	-0.997000	-0.560000
C	2.802000	7.539000	3.857000
H	2.536000	7.753000	2.803000
H	2.828000	8.510000	4.389000
C	3.855000	-0.564000	-6.187000
H	2.844000	-1.000000	-6.200000
H	3.739000	0.491000	-5.883000
C	-8.468000	-1.203000	1.051000
H	-9.308000	-1.355000	0.344000
C	-1.092000	-7.783000	-3.445000
C	-8.691000	1.566000	-2.729000
H	-7.981000	0.914000	-2.210000
C	-5.406000	-1.940000	-4.810000
H	-5.617000	-0.890000	-4.535000
H	-4.354000	-1.981000	-5.135000
C	2.949000	-6.196000	-6.492000
H	3.895000	-5.680000	-6.676000
C	-7.072000	-2.680000	-3.111000
H	-7.239000	-3.284000	-2.200000
H	-7.265000	-1.625000	-2.839000
C	1.074000	-7.498000	-7.326000
H	0.571000	-8.001000	-8.156000
C	4.139000	5.529000	3.148000
H	3.898000	5.716000	2.089000
H	5.127000	5.029000	3.186000
C	-3.141000	-4.687000	1.528000
H	-3.639000	-3.744000	1.244000
H	-2.341000	-4.440000	2.248000
C	5.787000	-5.392000	-1.959000

H	6.176000	-5.692000	-2.952000
C	-4.781000	5.379000	6.529000
H	-5.466000	4.624000	6.963000
H	-5.003000	6.341000	7.031000
C	8.497000	5.373000	-3.450000
H	8.669000	6.218000	-2.775000
C	1.955000	3.084000	-7.797000
H	1.754000	3.428000	-8.830000
H	2.353000	2.053000	-7.873000
C	-2.317000	4.851000	4.015000
H	-2.464000	4.932000	2.926000
H	-1.266000	4.559000	4.184000
C	0.245000	-1.500000	-7.939000
H	0.087000	-1.410000	-9.032000
H	1.124000	-0.877000	-7.689000
C	-2.805000	-7.610000	1.321000
H	-2.268000	-8.536000	1.611000
C	2.805000	0.154000	8.970000
C	6.093000	-5.121000	0.957000
H	7.111000	-5.532000	1.107000
H	5.715000	-4.822000	1.954000
C	7.005000	-0.791000	4.315000
H	8.061000	-1.000000	4.577000
H	7.016000	-0.111000	3.447000
C	-8.684000	2.950000	-2.477000
C	-6.248000	5.860000	-2.209000
H	-5.442000	5.164000	-2.457000
C	-7.930000	-2.563000	1.524000
H	-8.732000	-3.136000	2.029000
H	-7.597000	-3.166000	0.657000
C	-0.713000	-3.822000	-7.966000
H	-0.527000	-4.886000	-7.727000
H	-0.880000	-3.758000	-9.059000
C	0.654000	3.095000	-6.975000
H	-0.092000	2.429000	-7.452000
C	-2.268000	-2.274000	5.784000
C	2.982000	-5.536000	4.098000
H	3.004000	-4.621000	4.715000
H	3.463000	-5.284000	3.139000
C	-3.468000	-7.733000	-3.993000
H	-4.368000	-7.175000	-4.261000
C	3.901000	7.480000	-3.516000
H	3.403000	7.222000	-2.575000

C	3.097000	-6.969000	6.164000
H	3.151000	-6.071000	6.813000
H	3.651000	-7.775000	6.685000
C	-5.626000	-1.576000	1.752000
H	-4.760000	-1.427000	2.418000
H	-5.279000	-2.158000	0.880000
C	-5.453000	1.823000	-7.021000
H	-5.904000	0.833000	-6.815000
H	-5.686000	2.069000	-8.075000
C	-2.759000	-4.388000	7.049000
H	-2.325000	-5.350000	7.385000
C	0.516000	-7.505000	-6.042000
H	-0.431000	-8.030000	-5.882000
C	-5.015000	5.505000	5.014000
H	-6.072000	5.777000	4.820000
C	1.427000	-3.158000	8.578000
H	1.945000	-3.046000	7.620000
C	0.505000	-2.970000	-7.566000
H	1.407000	-3.338000	-8.091000
C	0.137000	8.813000	0.273000
H	0.117000	9.871000	0.601000
H	1.133000	8.409000	0.537000
C	-3.529000	-9.119000	-3.819000
C	3.257000	-9.858000	-2.461000
H	3.968000	-10.481000	-3.012000
C	-1.684000	-3.612000	6.258000
H	-0.803000	-3.427000	6.898000
H	-1.341000	-4.199000	5.389000
C	5.176000	-6.191000	0.339000
H	5.121000	-7.071000	1.010000
C	-7.392000	5.385000	-1.545000
C	-5.724000	2.506000	-4.627000
H	-6.169000	3.243000	-3.936000
H	-6.164000	1.524000	-4.379000
C	3.379000	8.509000	-4.302000
H	2.484000	9.053000	-3.987000
C	3.749000	-6.675000	4.801000
H	4.802000	-6.363000	4.950000
C	5.154000	8.152000	-5.928000
H	5.635000	8.423000	-6.873000
C	-3.916000	-7.947000	0.311000
H	-4.635000	-8.662000	0.757000
H	-3.482000	-8.435000	-0.583000

C	-7.805000	-2.253000	-5.485000
H	-8.028000	-1.192000	-5.260000
H	-8.496000	-2.562000	-6.294000
C	-4.639000	-6.650000	-0.095000
H	-5.430000	-6.877000	-0.837000
C	3.454000	4.325000	5.234000
H	4.440000	3.823000	5.272000
H	2.715000	3.642000	5.686000
C	4.014000	8.840000	-5.505000
C	-6.752000	-2.335000	2.489000
H	-6.355000	-3.310000	2.828000
C	-3.469000	-2.520000	4.868000
H	-3.154000	-3.082000	3.973000
H	-3.875000	-1.551000	4.525000
C	6.923000	-2.202000	-6.909000
H	7.571000	-2.727000	-6.181000
H	7.415000	-2.283000	-7.898000
C	-4.154000	-5.665000	2.163000
H	-4.599000	-5.188000	3.056000
C	-7.118000	8.107000	-2.164000
C	9.382000	3.731000	-4.985000
C	-3.317000	4.980000	6.784000
H	-3.141000	4.873000	7.872000
C	-3.632000	-5.667000	-0.728000
H	-4.140000	-4.740000	-1.039000
H	-3.182000	-6.120000	-1.627000
C	-2.554000	8.498000	-0.892000
H	-3.553000	8.899000	-1.154000
C	-1.462000	9.312000	-1.607000
H	-1.618000	9.279000	-2.704000
H	-1.518000	10.375000	-1.304000
C	-7.752000	-4.598000	-4.589000
H	-7.929000	-5.241000	-3.706000
H	-8.445000	-4.939000	-5.382000
C	-6.345000	-2.392000	-5.950000
H	-6.171000	-1.752000	-6.836000
C	-3.017000	3.627000	6.094000
H	-1.974000	3.325000	6.292000
H	-3.681000	2.837000	6.499000
C	-6.106000	7.212000	-2.527000
H	-5.209000	7.577000	-3.035000
C	5.736000	-6.617000	-1.030000
H	5.097000	-7.405000	-1.475000

H	6.748000	-7.049000	-0.908000
C	-3.584000	1.413000	-5.360000
H	-3.961000	0.410000	-5.107000
H	-2.489000	1.395000	-5.219000
C	9.587000	4.816000	-4.125000
H	10.595000	5.218000	-3.987000
C	-6.061000	-3.862000	-6.304000
H	-5.021000	-3.976000	-6.663000
H	-6.723000	-4.188000	-7.129000
C	-1.178000	-9.177000	-3.280000
H	-0.291000	-9.756000	-3.004000
C	-6.293000	-4.741000	-5.062000
H	-6.090000	-5.801000	-5.313000
C	-8.391000	6.307000	-1.180000
H	-9.278000	5.972000	-0.631000
C	3.269000	1.398000	8.500000
H	2.661000	1.978000	7.797000
C	-7.760000	-0.152000	3.219000
H	-8.094000	0.451000	4.086000
C	8.103000	3.194000	-5.164000
H	7.957000	2.337000	-5.826000
C	-2.705000	-1.446000	6.998000
H	-1.834000	-1.259000	7.649000
H	-3.096000	-0.466000	6.663000
C	-10.475000	1.837000	-4.329000
C	3.107000	-10.024000	-1.083000
C	-8.008000	4.089000	1.523000
H	-6.967000	4.428000	1.530000
C	3.701000	-7.945000	3.933000
H	4.193000	-7.762000	2.960000
H	4.260000	-8.764000	4.427000
C	2.988000	4.008000	-7.127000
H	3.935000	3.994000	-7.701000
C	-9.587000	1.005000	-3.640000
H	-9.597000	-0.073000	-3.822000
C	-3.329000	3.149000	-7.152000
H	-3.552000	3.426000	-8.202000
H	-2.232000	3.109000	-7.060000
C	5.532000	-2.861000	-6.952000
H	5.637000	-3.928000	-7.235000
C	-3.785000	-2.219000	7.786000
H	-4.095000	-1.608000	8.656000
C	-6.049000	2.886000	-6.084000

H	-7.148000	2.926000	-6.205000
C	-5.440000	4.266000	-6.391000
H	-5.678000	4.565000	-7.431000
H	-5.884000	5.032000	-5.726000
C	3.604000	-0.571000	9.868000
H	3.267000	-1.540000	10.248000
C	5.674000	7.127000	-5.128000
H	6.575000	6.599000	-5.459000
C	-10.466000	3.221000	-4.121000
H	-11.155000	3.860000	-4.680000
C	-2.346000	8.584000	0.632000
H	-3.140000	8.018000	1.155000
H	-2.421000	9.637000	0.964000
C	-3.913000	4.206000	-6.199000
H	-3.466000	5.196000	-6.416000
C	-2.391000	-9.846000	-3.461000
H	-2.458000	-10.929000	-3.324000
C	-0.081000	8.732000	-1.251000
H	0.713000	9.304000	-1.771000
C	5.892000	0.005000	-7.544000
H	5.794000	1.076000	-7.275000
H	6.365000	-0.033000	-8.544000
C	-3.422000	-6.956000	2.572000
H	-4.128000	-7.658000	3.057000
H	-2.630000	-6.725000	3.309000
C	-8.942000	-0.376000	2.258000
H	-9.761000	-0.904000	2.784000
H	-9.348000	0.596000	1.920000
C	-3.965000	-4.649000	6.131000
H	-3.655000	-5.262000	5.264000
H	-4.742000	-5.225000	6.672000
C	0.904000	-2.022000	9.226000
C	0.106000	4.533000	-6.906000
H	-0.122000	4.900000	-7.925000
H	-0.839000	4.559000	-6.333000
C	2.438000	5.443000	-7.055000
H	3.187000	6.113000	-6.595000
H	2.240000	5.829000	-8.074000
C	-7.230000	-1.513000	3.699000
H	-6.399000	-1.362000	4.411000
H	-8.025000	-2.062000	4.240000
C	-8.260000	7.664000	-1.488000
H	-9.032000	8.380000	-1.196000

C	4.649000	-2.136000	-7.985000
H	3.654000	-2.617000	-8.039000
H	5.101000	-2.215000	-8.993000
C	-3.203000	-3.560000	8.266000
H	-3.964000	-4.115000	8.850000
H	-2.343000	-3.385000	8.941000
C	4.503000	-0.656000	-7.583000
H	3.859000	-0.131000	-8.317000
C	-9.910000	3.149000	0.353000
H	-10.378000	2.763000	-0.558000
C	-4.994000	-2.478000	6.870000
H	-5.431000	-1.516000	6.536000
H	-5.787000	-3.014000	7.428000
C	-1.093000	1.288000	8.804000
H	-1.367000	1.012000	7.784000
C	4.494000	1.910000	8.925000
H	4.847000	2.880000	8.564000
C	-9.576000	3.768000	-3.193000
H	-9.579000	4.851000	-3.034000
C	1.281000	-4.433000	9.125000
H	1.692000	-5.309000	8.617000
C	4.840000	-0.071000	10.292000
H	5.463000	-0.638000	10.989000
C	-1.543000	2.567000	10.800000
C	0.432000	1.189000	10.678000
H	1.359000	0.832000	11.138000
C	0.079000	0.773000	9.379000
C	-4.545000	-3.306000	5.654000
H	-5.407000	-3.490000	4.987000
C	-1.906000	2.182000	9.507000
H	-2.809000	2.591000	9.049000
C	-8.751000	4.141000	2.702000
H	-8.305000	4.522000	3.626000
C	-10.075000	3.688000	2.700000
C	5.275000	1.171000	9.822000
C	-0.374000	2.077000	11.393000
H	-0.097000	2.397000	12.401000
C	0.200000	-2.201000	10.430000
H	-0.239000	-1.342000	10.946000
C	-10.660000	3.190000	1.534000
H	-11.697000	2.842000	1.548000
C	0.581000	-4.584000	10.327000
C	0.035000	-3.475000	10.980000

H	-0.517000	-3.614000	11.913000
Cl	8.058000	9.212000	1.903000
Cl	4.063000	-11.217000	-0.246000
Cl	2.998000	-6.838000	-9.136000
Cl	10.734000	3.027000	-5.827000
Cl	-5.048000	-9.944000	-4.041000
Cl	6.810000	1.805000	10.353000
Cl	-6.942000	9.801000	-2.539000
Cl	3.368000	10.125000	-6.493000
Cl	0.376000	-6.176000	11.008000
Cu	-0.063000	0.505000	0.317000
H	-1.802000	-0.971000	-1.108000
H	1.506000	-0.479000	-1.694000
H	0.495000	-1.932000	1.268000
H	0.221000	0.617000	2.807000
H	-2.231000	1.834000	-0.045000
H	1.523000	2.224000	-0.380000
H	2.789000	-0.632000	0.787000
H	-2.199000	-1.314000	1.522000
H	-0.533000	0.838000	-2.785000
H	-0.269000	3.346000	1.664000