

Supporting Information

Layer-by-Layer Anodes with Orientation-arranged Structure Induced by Magnetic Field for High-performance Lithium Ion Batteries

Qing Mei Xu[§], Zhao Min Sheng^{§}, Huan Huang, Cheng Kang Chang, Yan Shan Huang and Sheng Han**

School of Materials Science and Engineering, Shanghai institute of technology, Shanghai 201418, China

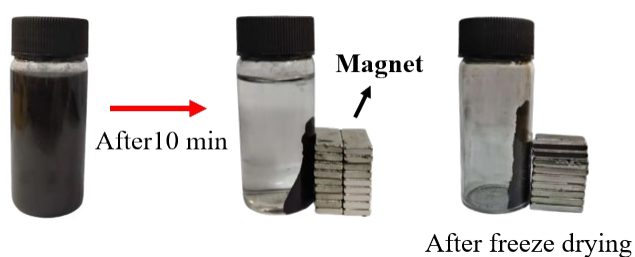


Fig. S1 Response of $\text{Fe}_3\text{O}_4/\text{CFs}$ to the added magnet.

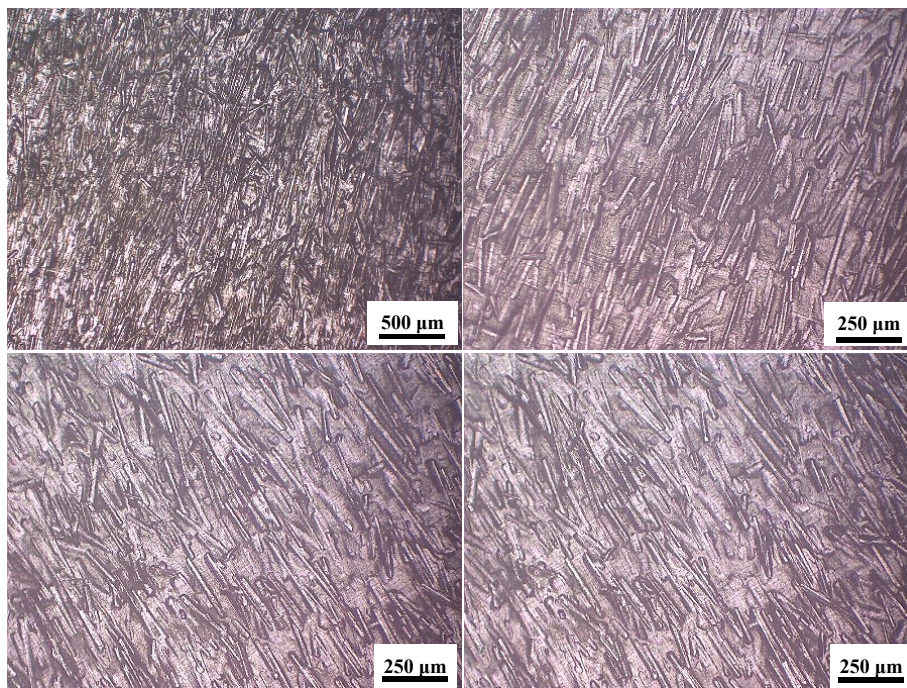


Fig. S2 Optical microscope images of the orientation-arranged $\text{Fe}_3\text{O}_4/\text{CF}$ anodes.