

Supplementary Information:
**Synthesis of dimpled polymer-silica nanocomposite particles by
interfacial swelling-based seeded polymerization**

Yiping Yin,[‡] Zhe Wang[‡] and Hua Zou^{*}

University of Shanghai for Science and Technology, 516 Jungong Road, Shanghai 200093, China.

E-mail: hua.zou@usst.edu.cn.

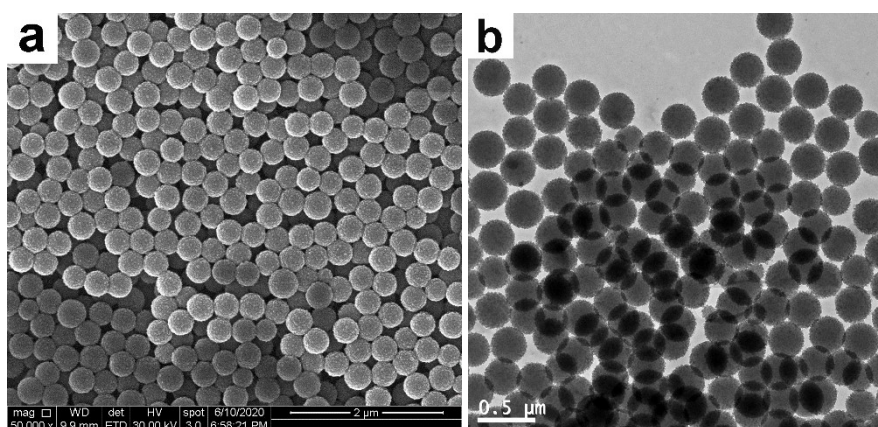


Fig. S1 Low magnification SEM (a) and TEM (b) images of PS-SiO₂ nanocomposite particles.

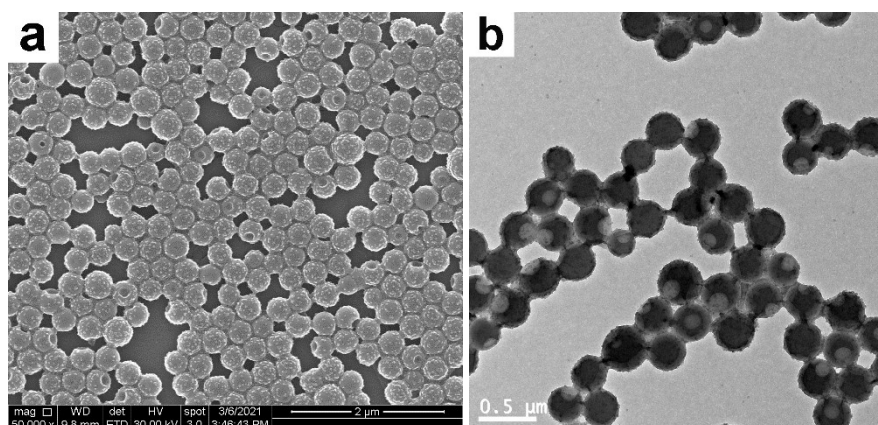


Fig. S2 Low magnification SEM (a) and TEM (b) images of typical dimpled polymer-SiO₂ nanocomposite particles (entry 2).

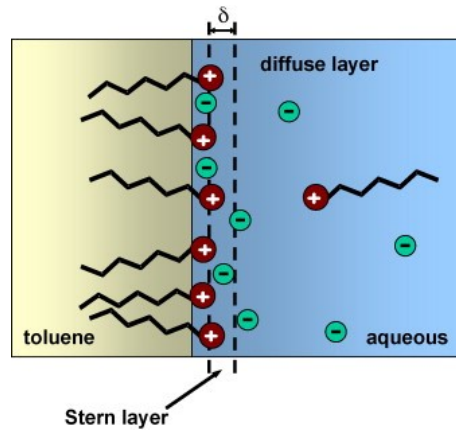


Fig. S3 Schematic representation of the electrical double layer structure at the toluene-water interface in the presence of CTAB.⁶²