

Supplementary Information

Interlayer-expanded MWW-type zeolite catalysts with carbon filler in expanded micropores for efficient microwave heating

Masaki Okamoto,^{*a} Takahiro Sakatsume^b, Shuntaro Tsubaki^c and Yuji Wada^d

^a Research and Education Center for Natural Sciences, Keio University, Yokohama, Kanagawa 223-8521, Japan.

E-mail: okamoto.m@keio.jp

^b School of Materials and Chemical Technology, Tokyo Institute of Technology, Meguro-ku, Tokyo 152-8552, Japan

^c Graduate School of Bioresource and Bioenvironmental Science, Kyushu University, Fukuoka, Fukuoka 819-0395, Japan

^d Institute of Innovative Research, Tokyo Institute of Technology, Yokohama, Kanagawa 226-8503, Japan

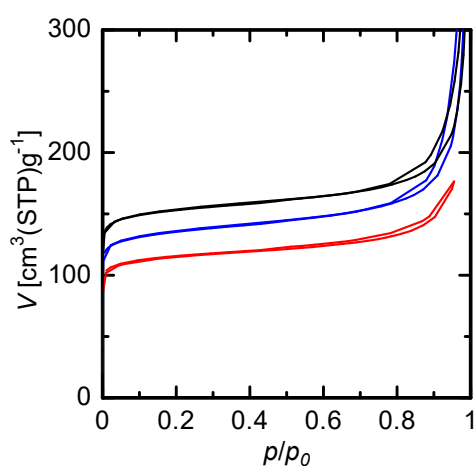


Fig. S1 Nitrogen adsorption–desorption isotherms of MWW (blue), exp-MWW (black), and C@exp-MWW (red).

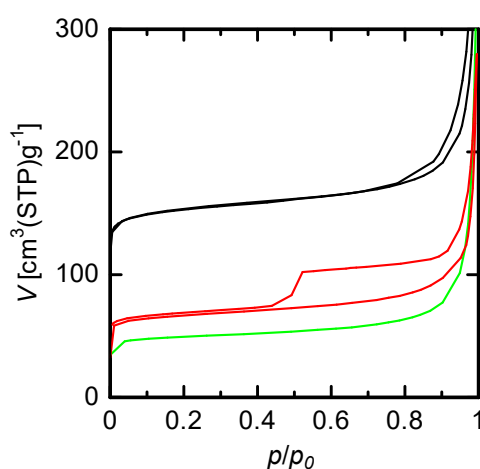


Fig. S2 Nitrogen adsorption–desorption isotherms of exp-MWW (black), Ph-C@exp-MWW (green) and FA-C@exp-MWW (red).

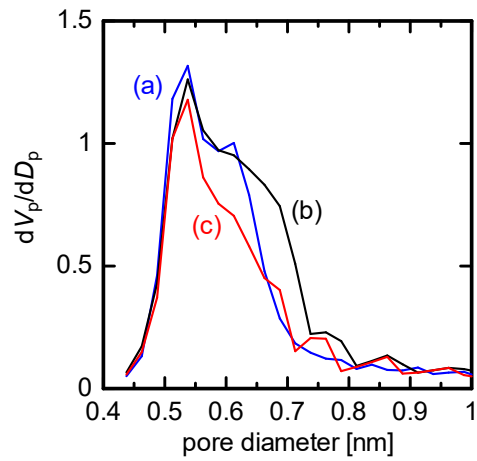


Fig. S3 Pore size distributions of MWW (a), exp-MWW (b) and C@exp-MWW (c).

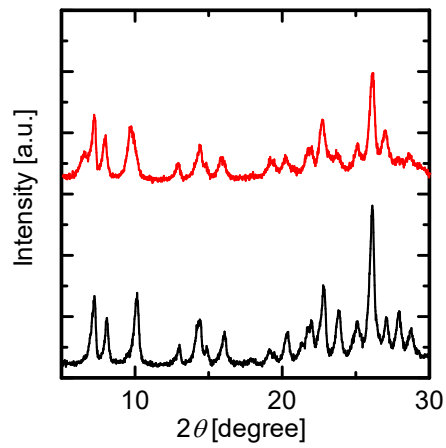


Fig. S4 X-ray diffraction (XRD) patterns of H-exp-MWW (black) and H-C@exp-MWW (red).

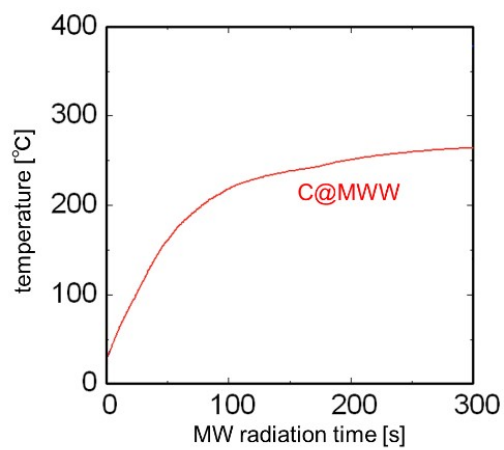


Fig. S5 Temperature of one of C@ MWWs heated by MW radiation.