

Electronic Supplementary Information

Atomic Layer Deposition for Surface Area Determination of Solid Oxide Electrodes

Travis Schmauss and Scott Barnett

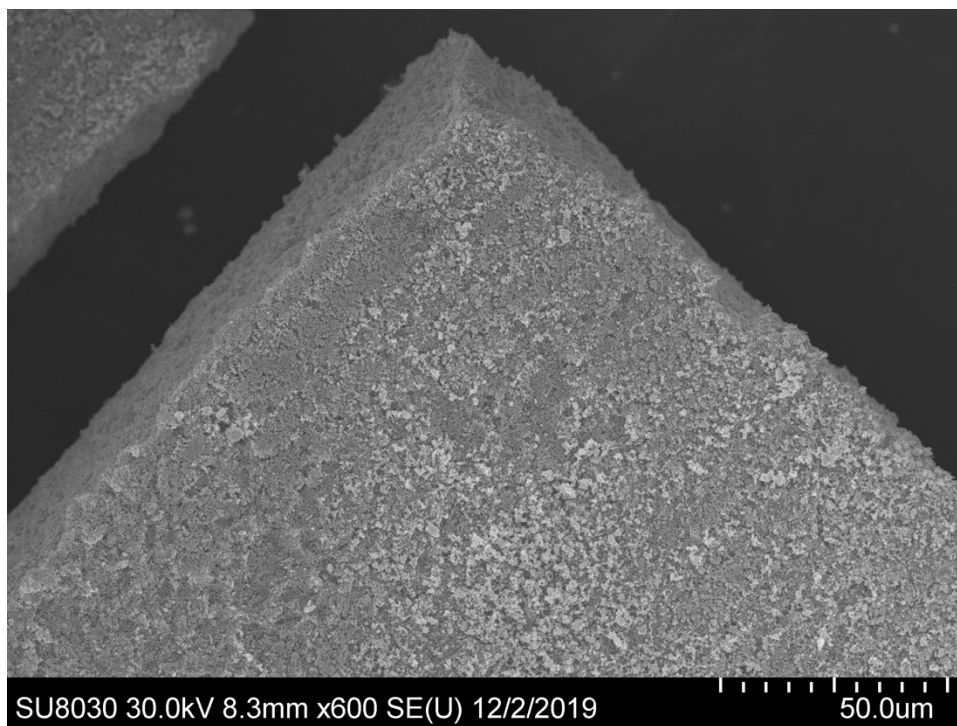


Figure S1. Scanning electron micrograph of self-supported, bulk LSM/GDC fired to create quantities large enough for BET measurement (~1 g material per measurement). The microstructure is equivalent to electrodes fired atop GDC substrates.

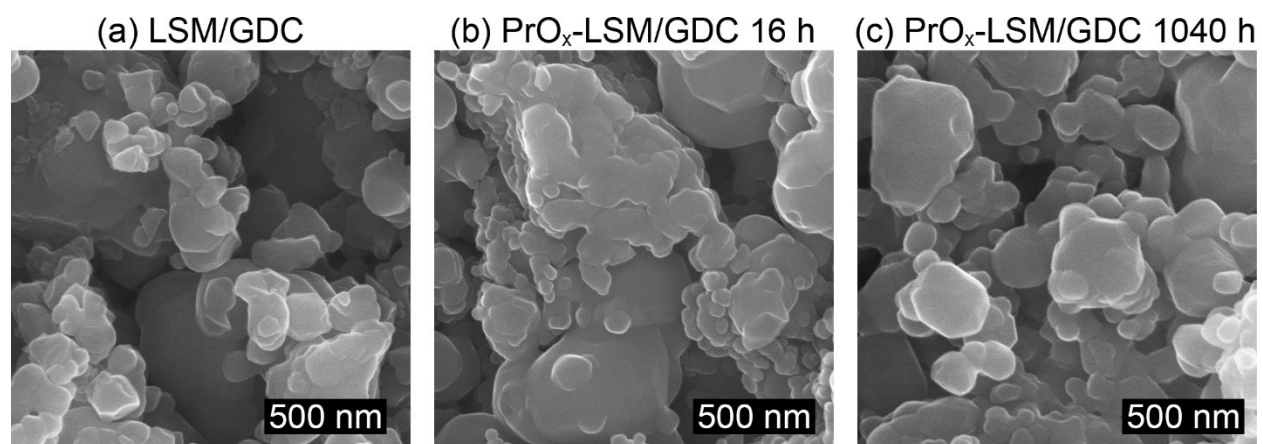


Figure S2 Comparison between the (a) as-fired LSM/GDC, (b) PrO_x-infiltrated LSM/GDC after 16 h at 700°C, and (c) PrO_x-infiltrated LSM/GDC after 1040 h at 700°C. Morphological differences are subtle and would be difficult to identify by sight.