

Supporting Information

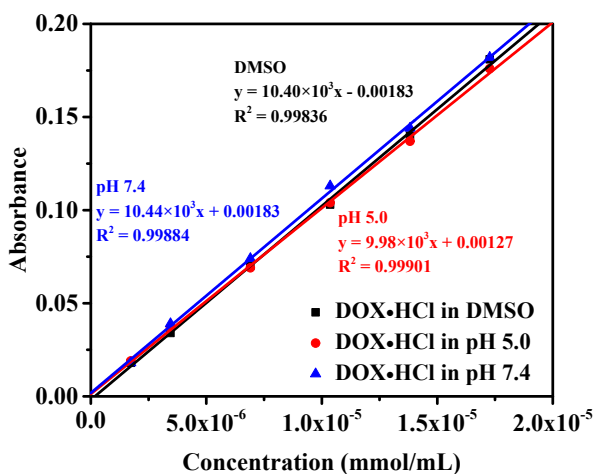


Fig. S1. Calibration curves of DOX·HCl in different solutions.

xiepengwei-01_210625160103 #19 RT: 0.14 AV: 1 NL: 1.15E6
T: FTMS + p ESI Full ms [500.00-3000.00]

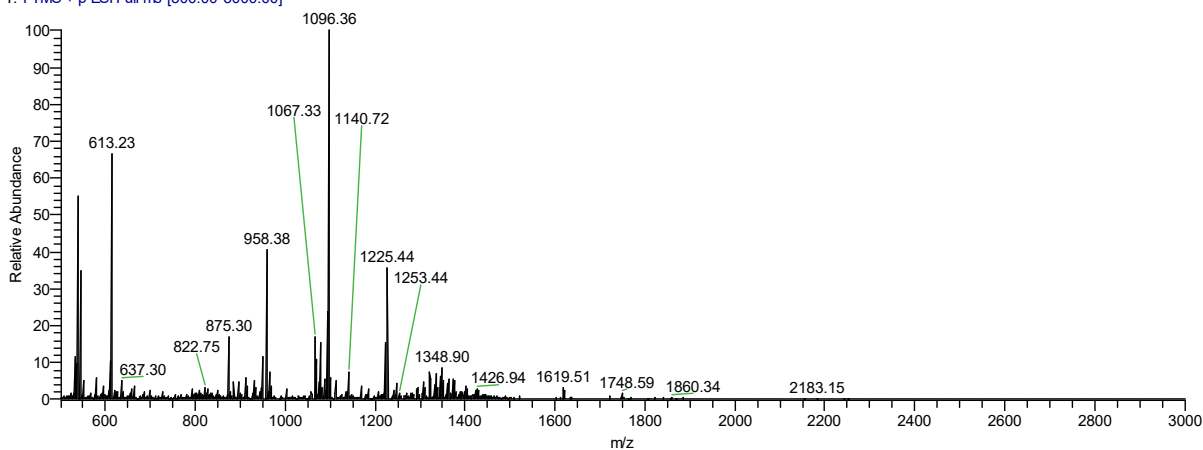


Fig. S2. ESI mass spectrum of D-DOX_{ADH}.

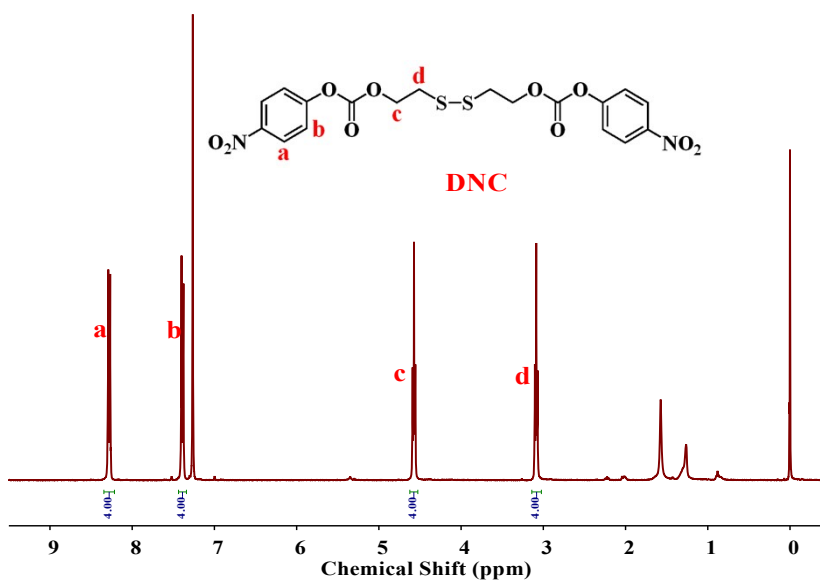


Fig. S3. ¹H NMR spectra of DNC (CDCl₃, 20 °C).

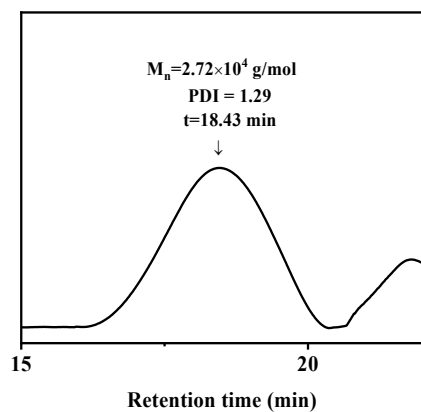


Fig. S4. GPC trace of the PDOX_{SS-ADH}-PEG in DMF with calibrator of PMMA.

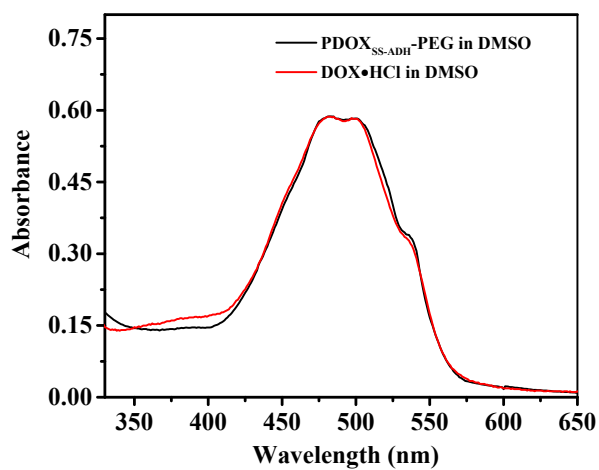


Fig. S5. UV-vis spectra of DOX·HCl ($4.682 \times 10^{-5} \text{ mmol/mL}$) and PDOX_{SS-ADH}-PEG ($4.682 \times 10^{-5} \text{ mmol/mL}$) in DMSO.