

Supporting Information

Animal Protein-Plant Protein Composite Nanospheres for Dual-Drug Loading and Synergistic Cancer Therapy

Minqi Lu,^{†,#} Mi Wu,^{†,#} Yufang Huang,[‡] Jinrong Yao,[†] Zhengzhong Shao, Xin Chen^{†,}*

[†]State Key Laboratory of Molecular Engineering of Polymers, Department of Macromolecular Science, Shanghai Stomatological Hospital & School of Stomatology, Laboratory of Advanced Materials, Fudan University, Shanghai, 200433, People's Republic of China

[‡]Department of Materials Science, Fudan University, Shanghai, 200433, People's Republic of China

*E-mail: chenx@fudan.edu.cn

M. L. and M. W. contribute equally to this work.

Number of pages: 2

Number of figures: 2

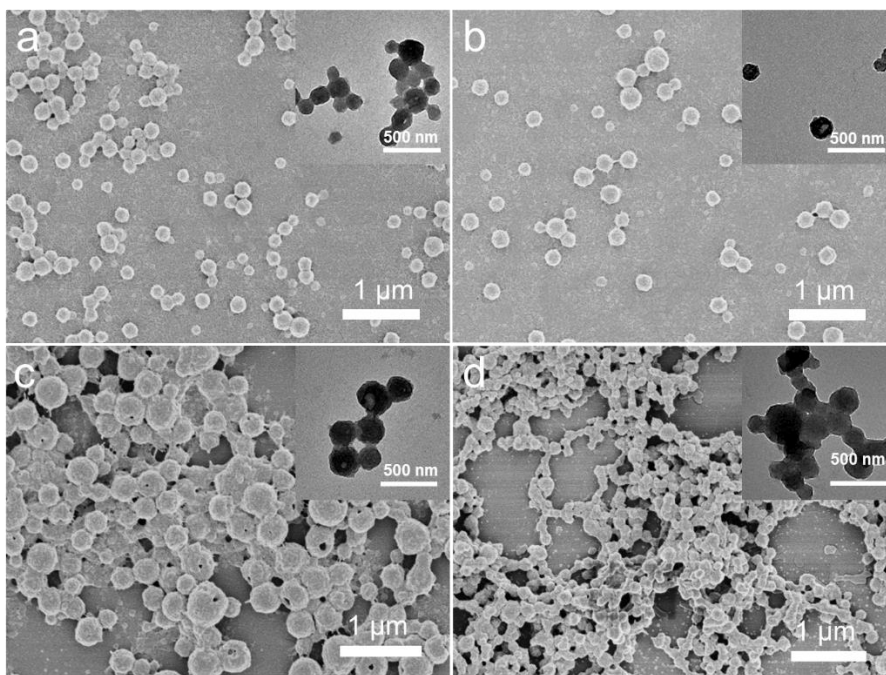


Figure S1. SEM images of RSF/zein nanospheres prepared at different RSF/zein mass ratio (insets are the corresponding TEM images). (a) 9:1, (b) 6:1, (c) 1:1, (d) 1:3.

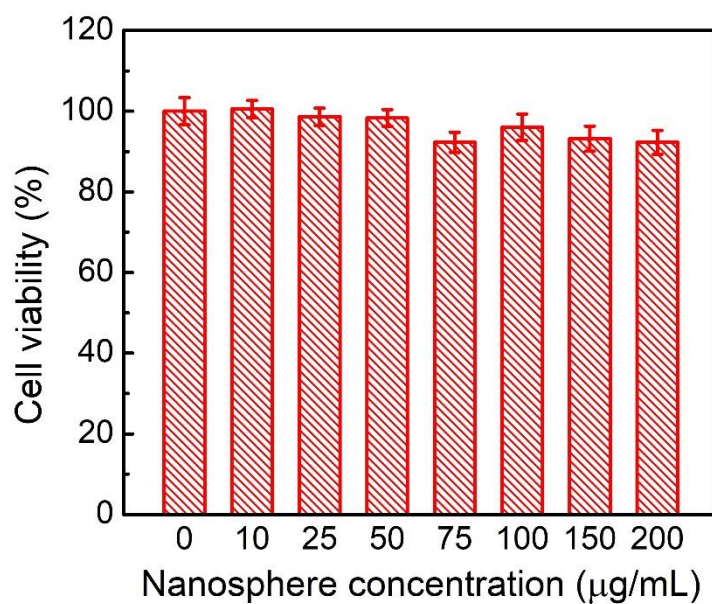


Figure S2. Cell viability of MCF-7 cells incubated with pristine RSF/zein nanospheres for 24 h.