

Cysteine-phenylalanine Derived Self-assembled Nanoparticles as Glutathione Responsive Drug Delivery Systems in Yeast

Sonika Chibh,^a Shradha Suyal,^b Nidhi Aggarwal,^a Anand Kumar Bachhawat^b and Jiban Jyoti Panda^{a*}

a. Institute of Nano Science and Technology, Mohali, Punjab, India,140306

b. Indian Institute of Science Education and Research Mohali, Punjab, India,140306

*Corresponding Author

Dr. Jiban Jyoti Panda

Institute of Nano Science and Technology, Sector 81, Mohali, Punjab, 140306, India.

Email: jyoti@inst.ac.in

Supporting Information:

Results:

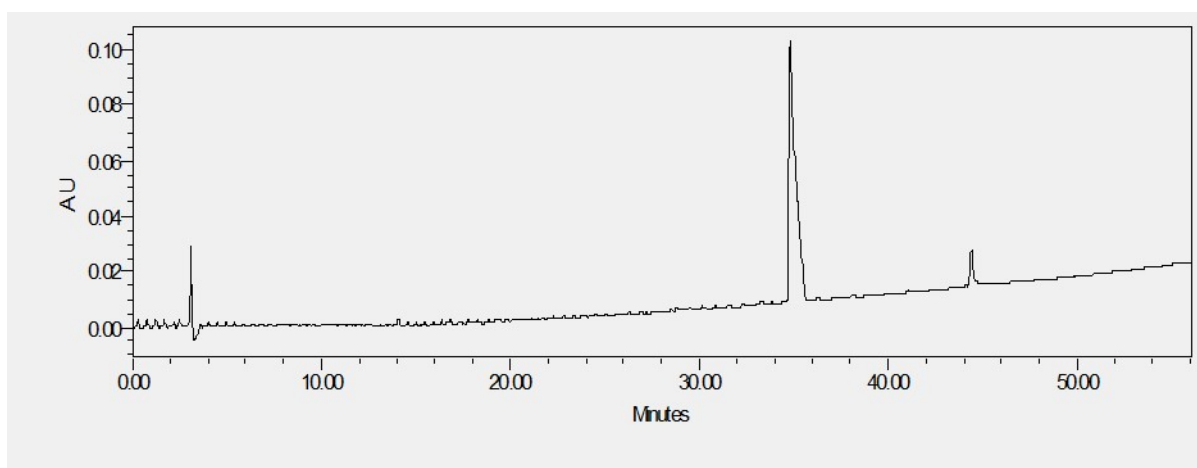


Figure S1: HPLC chromatogram of CFO.

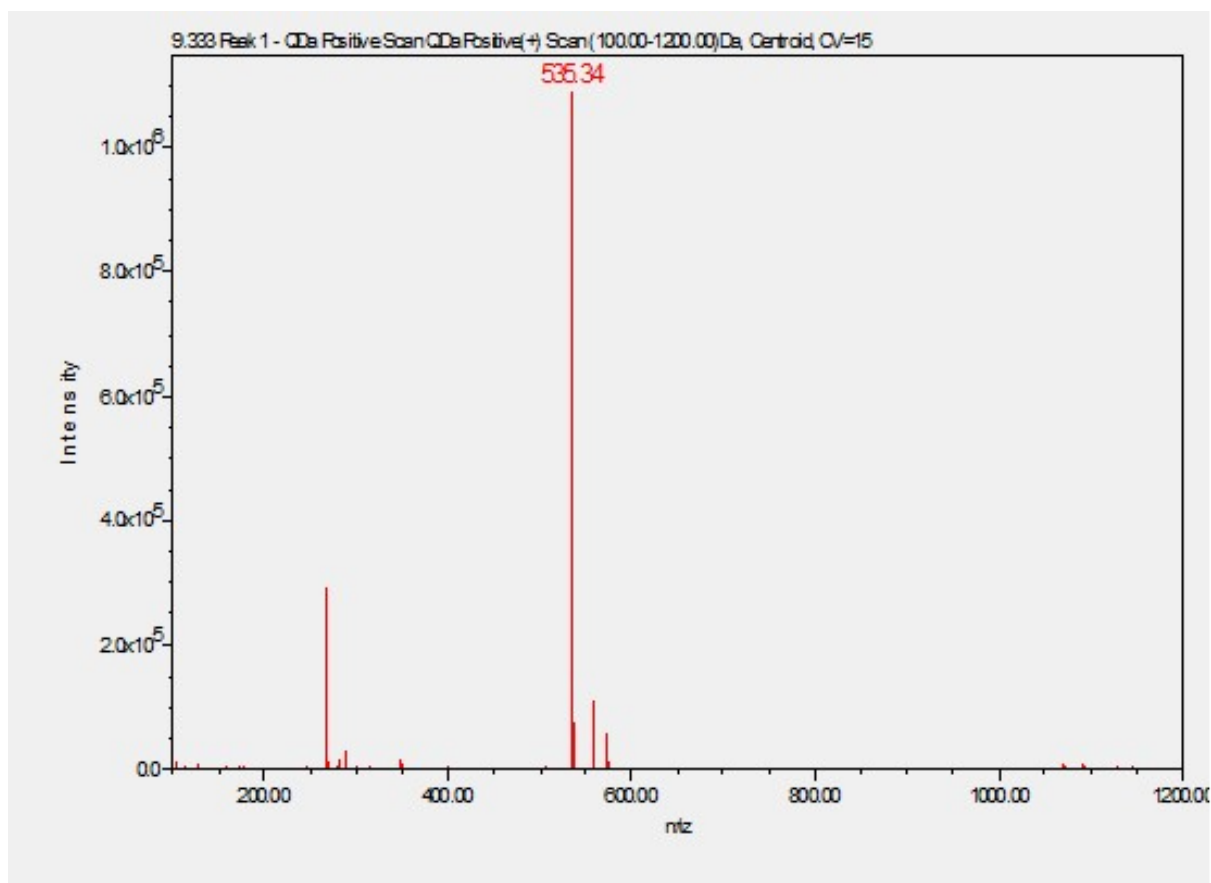


Figure S2: Molecular weight (m/z ratio) of CFO determined by mass spectrometric analysis.

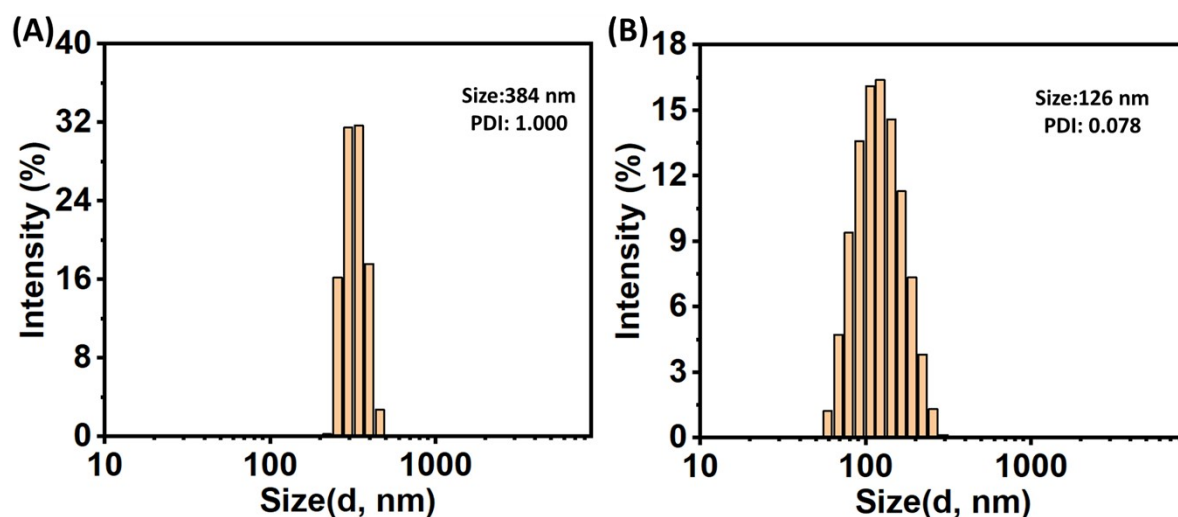


Figure S3: Intensity distribution profile of the (A) bare Terb and (B) NPs-Terb in aqueous medium determined using DLS. Terb in the nanoformulation exhibits better dispersibility with uniform particle size and lesser PDI.

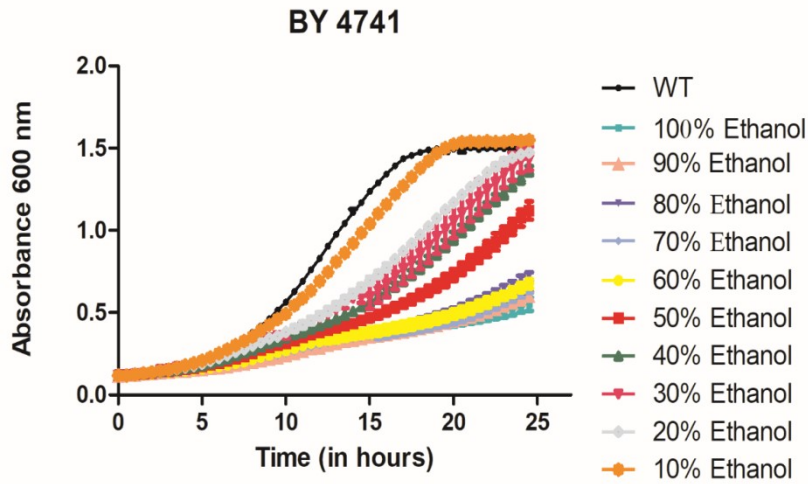


Figure S4: Graph showing growth of *S.cerevisiae* incubated with different ethanol: water combinations of 100 µg/ml of terbinafine.

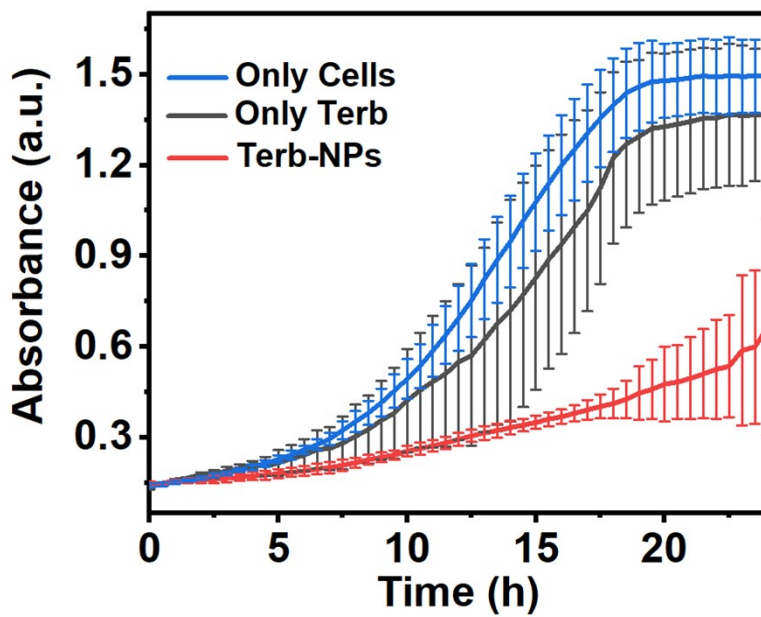


Figure S5: Graphs showing growth curve of *S. cerevisiae* incubated with only Terb and NPs-
Terb for 24 h after being treated with 50 µg/mL of the formulation.