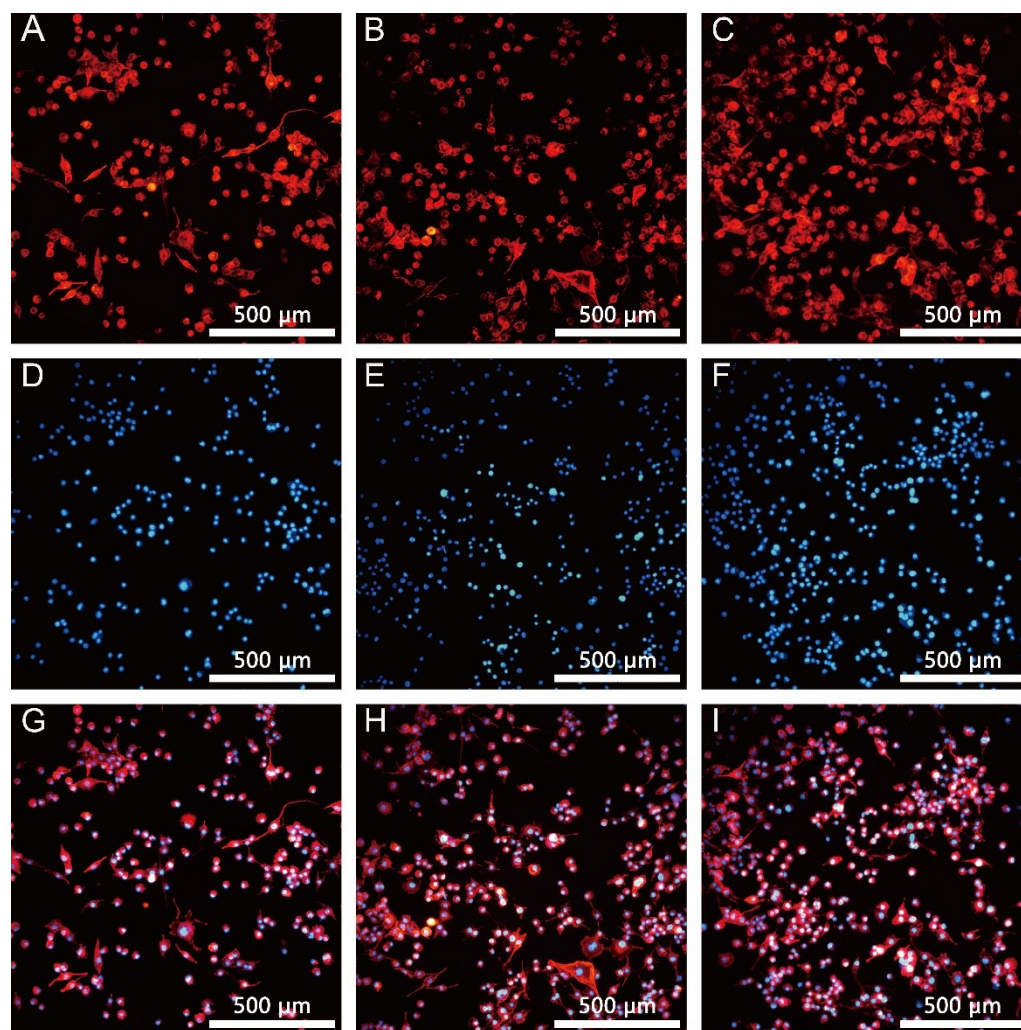
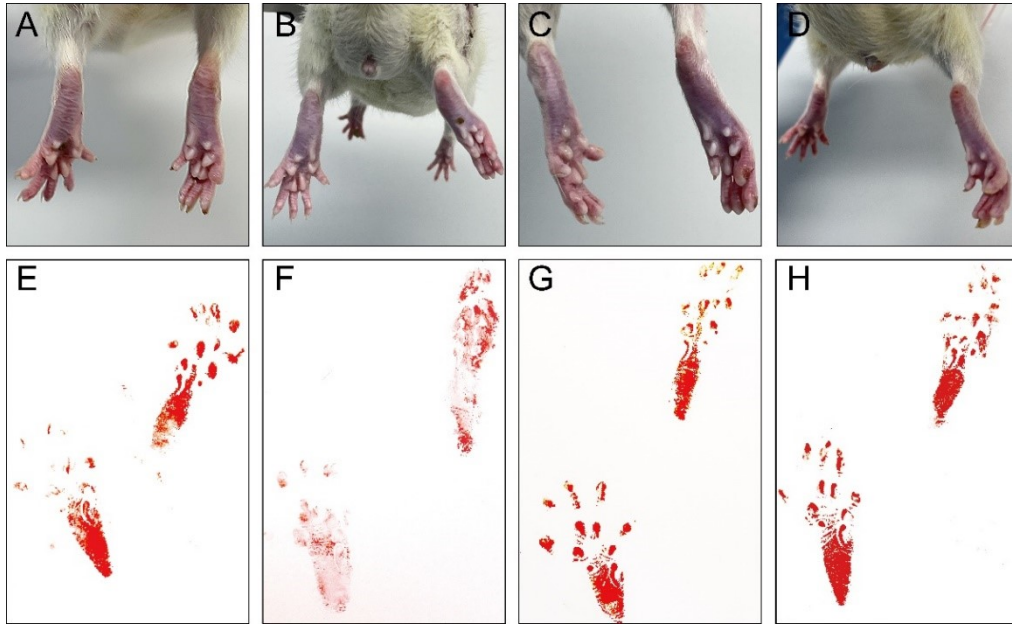


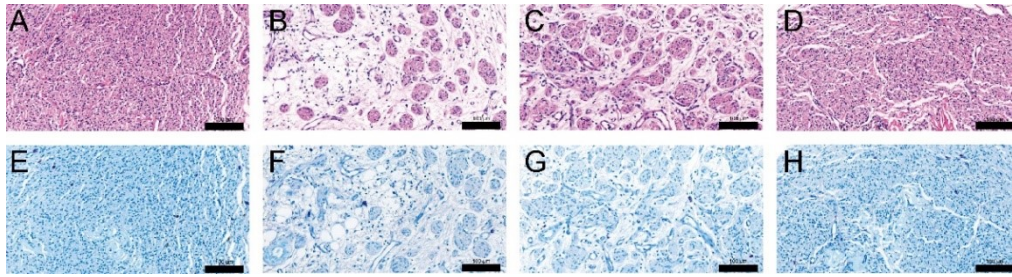
## Supporting Information



**Figure S1.** Observation of RSC morphology on PCL, collagen, collagen/UA scaffolds through immunofluorescence staining for phalloidin. RSCs were examined by immunofluorescence staining for phalloidin after being seeded on the scaffolds for 72 h. PCL (A, D, G), collagen (B, E, H), and collagen/UA (C, F, I) scaffolds. The scale bar is 500  $\mu\text{m}$ .



**Figure S2.** Gross view of foot and footprints from autograft group (A, E), PCL group (B, F), PCL/collagen group (C, G), and PCL/collagen/UA group (D, H) at 12 weeks postoperatively.



**Figure S3.** Toluidine blue and HE staining of regenerated nerve fibers from autograft group (A, E), PCL group (B, F), PCL/collagen group (C, G), and PCL/collagen/UA group (D, H) at 12 weeks postoperatively. The scale bars are 100  $\mu\text{m}$ .