

Supporting Information

Ultrasmall Gold Decorated Bimetallic Metal-organic Framework based Nanoprobes for Enhanced Chemodynamic Therapy with Triple Amplification

Tianzi Geng[‡], Jiahe Zhang[‡], Zhaoyang Wang, Yuehua Shi, Yu Shi, Leyong Zeng*

Key Laboratory of Medicinal Chemistry and Molecular Diagnosis of the Ministry of Education, Institute of Life Science and Green development, Chemical Biology Key Laboratory of Hebei Province, Hebei Key Laboratory of precise imaging of inflammation related tumors, College of Chemistry & Environmental Science, Hebei University, Baoding, 071002, P.R. China.

*Corresponding author. E-mail: zengly@hbu.cn

[‡]These authors contributed equally to this work.

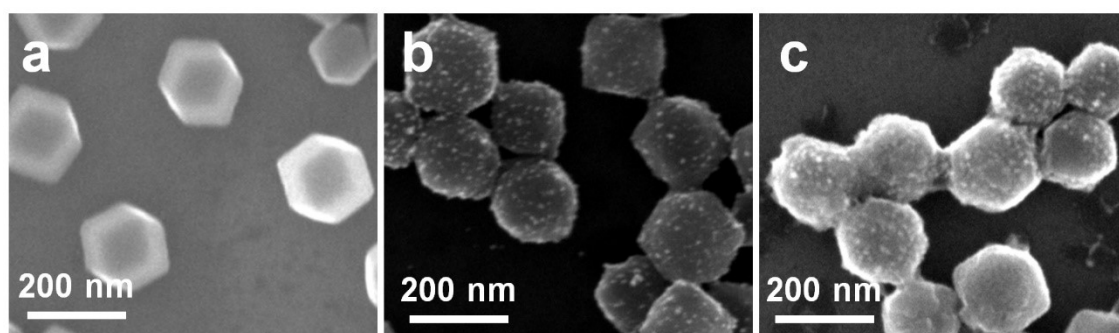


Fig. S1. SEM images of ZIF-67, ZIF-67@AuNPs, and ZIF-67@AuNPs@MnO₂.

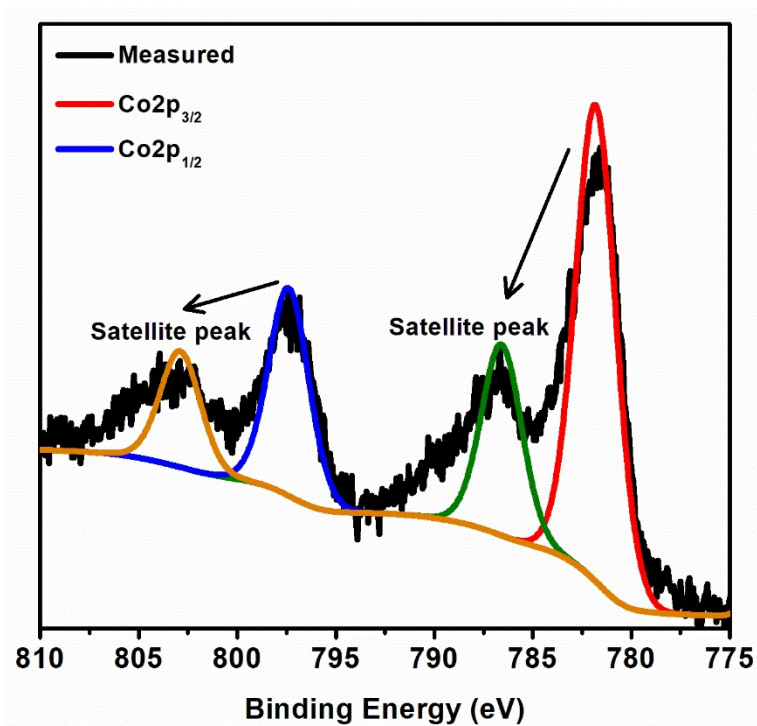


Fig. S2. Co₂p XPS spectrum of ZIF-67@AuNPs.

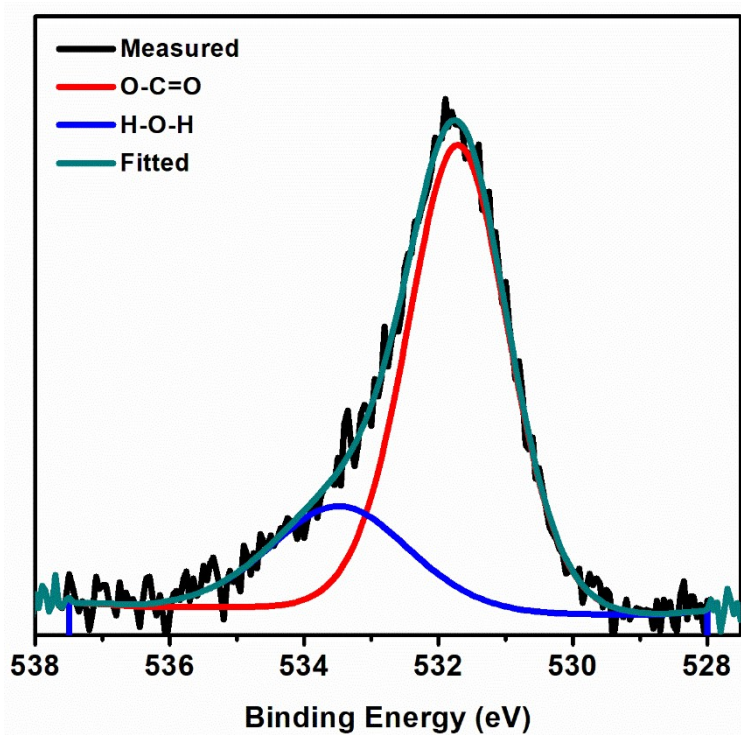


Fig. S3. O₁s XPS spectrum of ZIF-67@AuNPs.

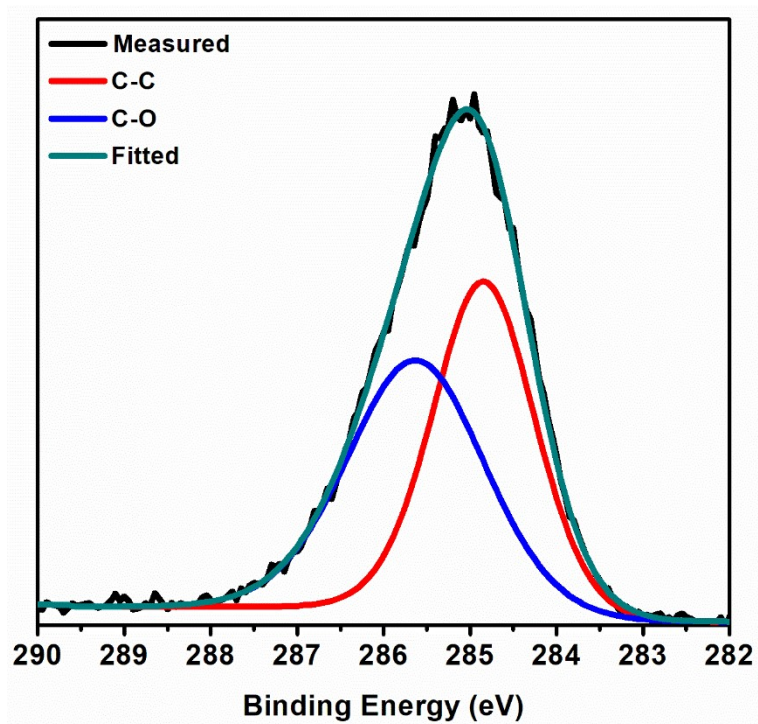


Fig. S4. C1s XPS spectrum of ZIF-67@AuNPs.

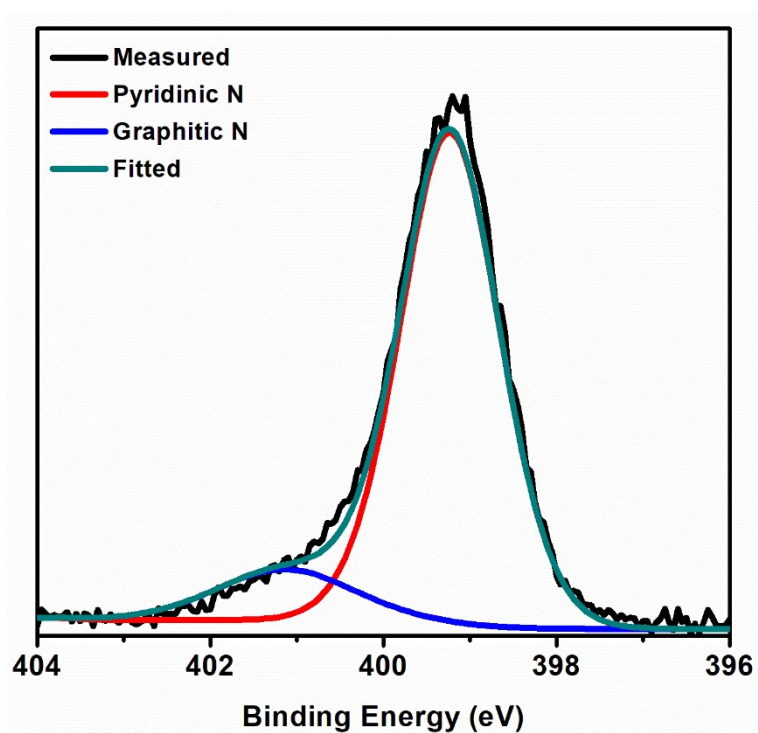


Fig. S5. N1s XPS spectrum of ZIF-67@AuNPs.

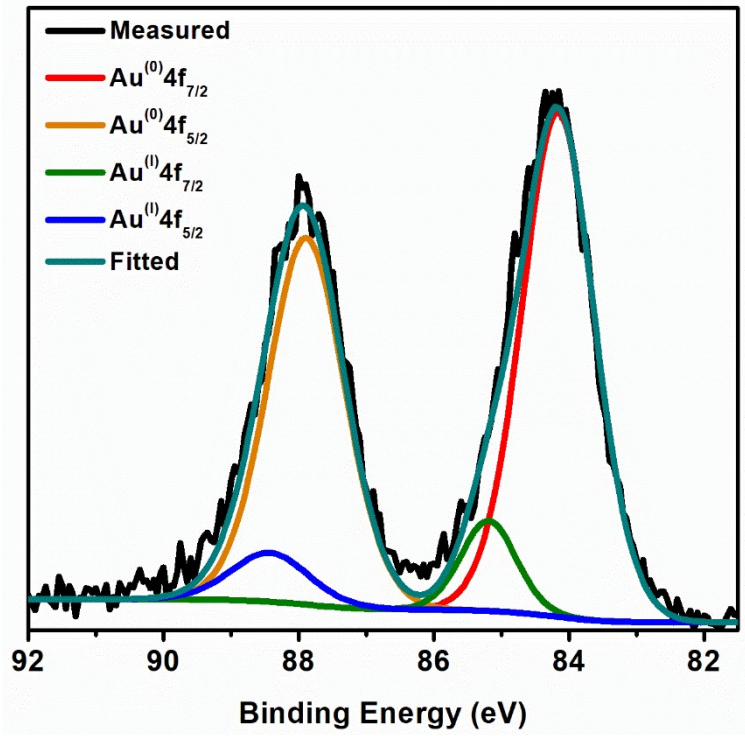


Fig. S6. Au4f XPS spectrum of ZIF-67@AuNPs.

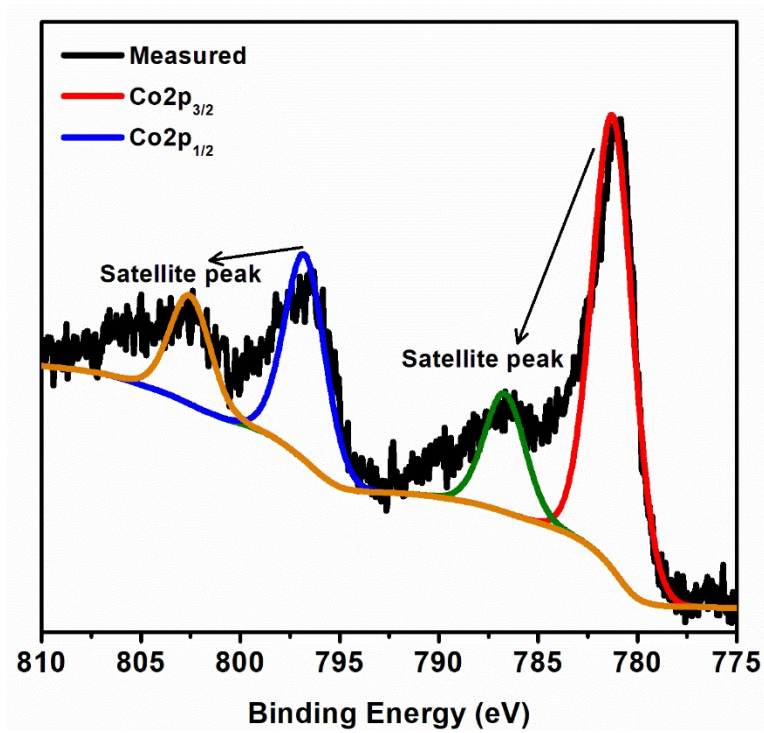


Fig. S7. Co2p XPS spectrum of ZIF-67@AuNPs@MnO₂.

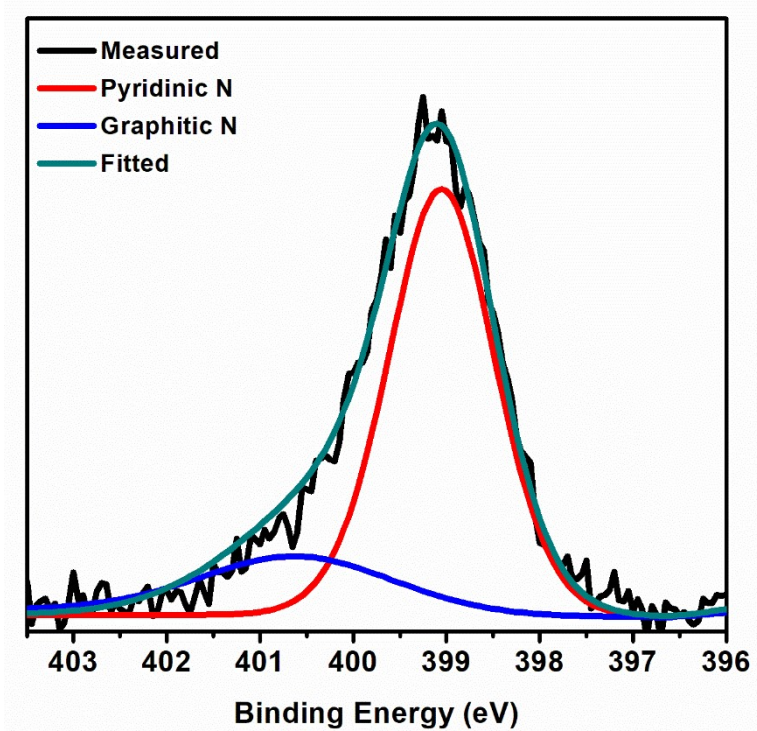


Fig. S8. N1s XPS spectrum of ZIF-67@AuNPs@MnO₂.

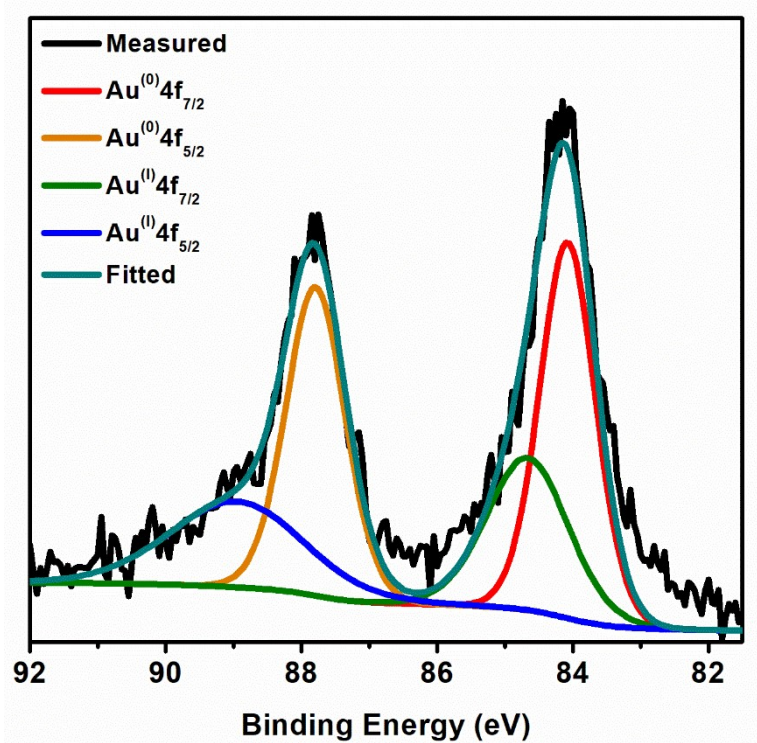


Fig. S9. Au4f XPS spectrum of ZIF-67@AuNPs@MnO₂.

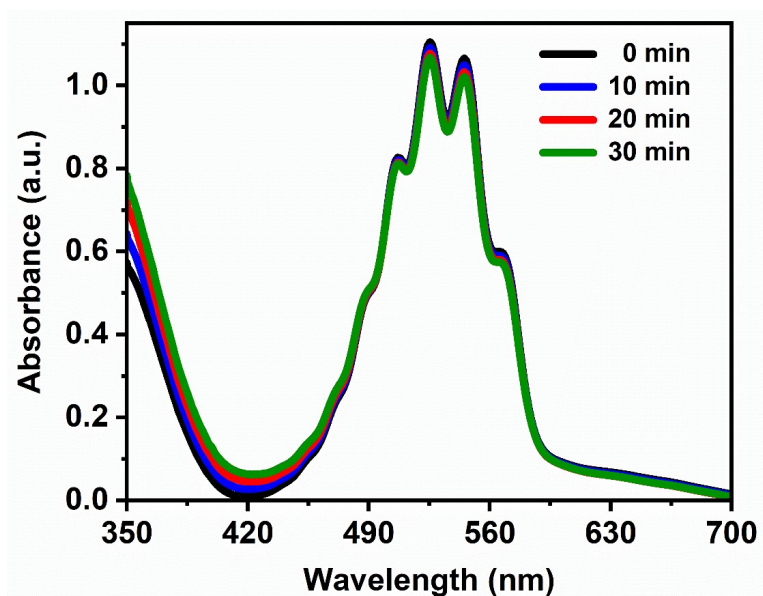


Fig. S10. UV-vis absorption spectra of pure KMnO₄ by changing incubation time.

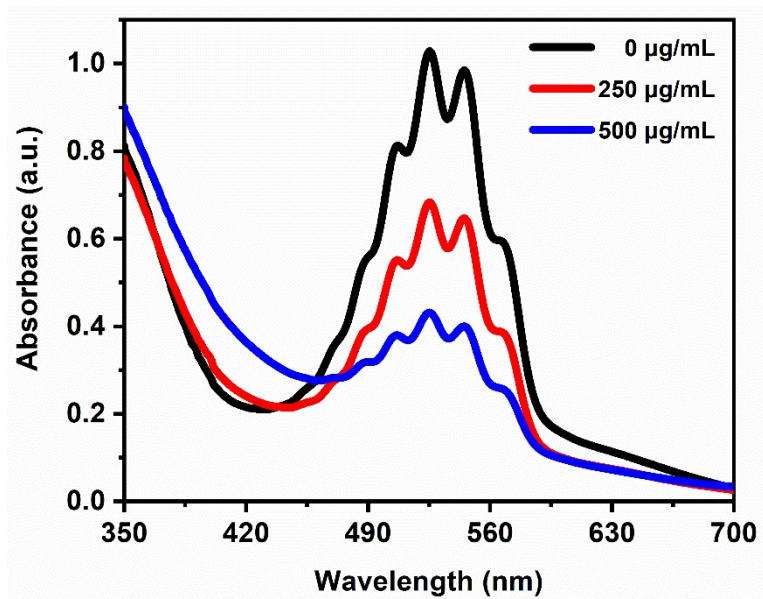


Fig. S11. UV-vis absorption spectra of KMnO₄ incubated with ZIF-67@AuNPs@MnO₂ by changing glucose concentration (10 min).

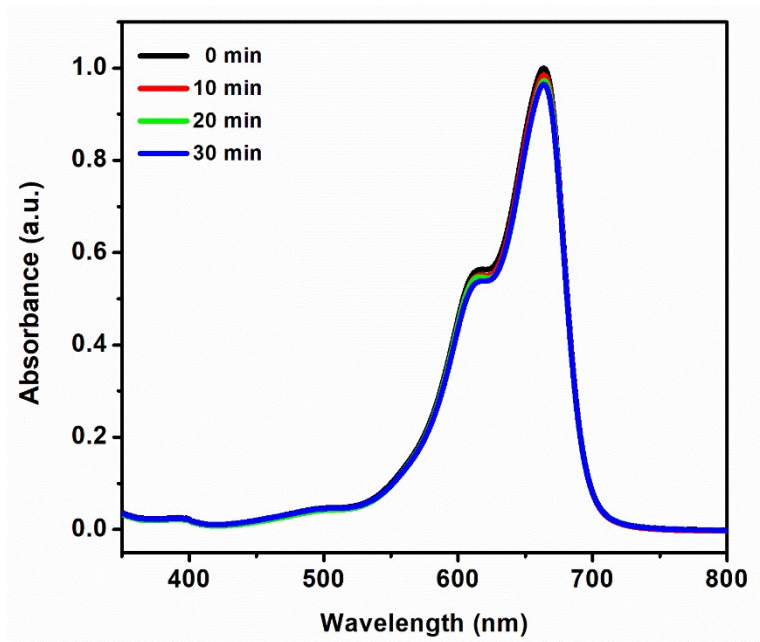


Fig. S12. UV-vis absorption spectra of pure MB.

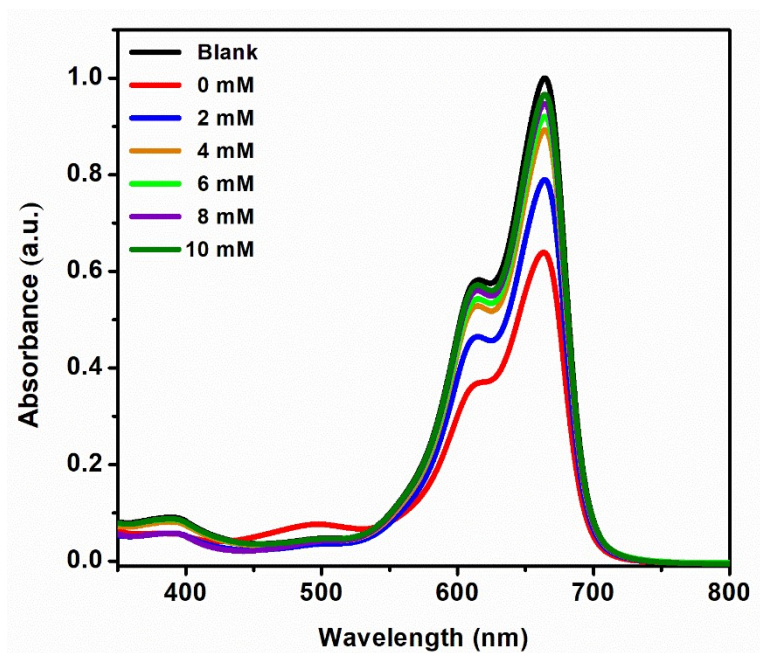


Fig. S13. UV-vis absorption spectra of MB incubated with ZIF-67@AuNPs by changing GSH concentration.

Table S1. Routine blood indexes of mice injected with ZIF-67@AuNPs@MnO₂

	WBC (10⁹/L)	RBC (10¹²/L)	HGB (g/L)	HCT (%)	PLT (10⁹/L)
Reference range	0.8-6.8	6.36-9.42	110-143	34.6-44.6	450-1590
Saline	7.21	8.65	158	40.5	925
ZIF-8@AuNPs@MnO₂	6.96	8.93	161	40.6	1021

Table S2. Blood biochemical indexes of mice injected with ZIF-67@AuNPs@MnO₂

	ALT (U/L)	AST (U/L)	ALP (U/L)	BUN (mg/dl)	CREA (μM)
Reference range	10.06-96.47	67-381	22.52-474.35	10.81-34.74	10.91-85.09
Saline	64.5	253	312.35	28.34	65.24
ZIF-8@AuNPs@MnO₂	69.8	289	297.41	30.14	70.87