

Supporting Information

A biocompatible polyurethane fluorescent emulsion with aggregation-induced emission for targeting tumor imaging

Yangcen Ou^a, Xiaofei Wang^a, Nan He^a, Xiao Wang^a, Dan Lu^b, Zhen Li^a, Feng Luo^{*a}, Jiehua Li^a,

Hong Tan^a

^a College of Polymer Science and Engineering, State Key Laboratory of Polymer Materials Engineering, Sichuan University, Chengdu 610065, China

^b Department of Otorhinolaryngology, Head & Neck Surgery, West China Hospital, Sichuan University, Chengdu 610041 Sichuan, China

Corresponding Author

* E-mail addresses: fengluo@scu.edu.cn.

Supplementary Figures

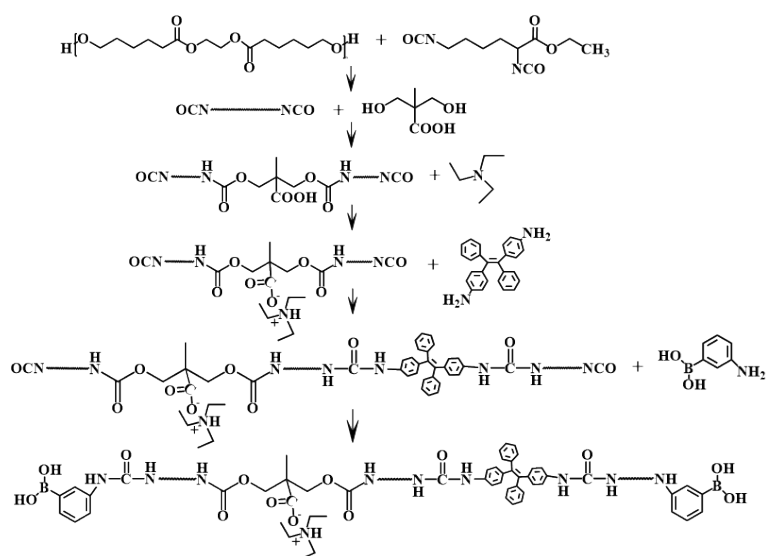


Fig. S1. synthetic route of PTP.

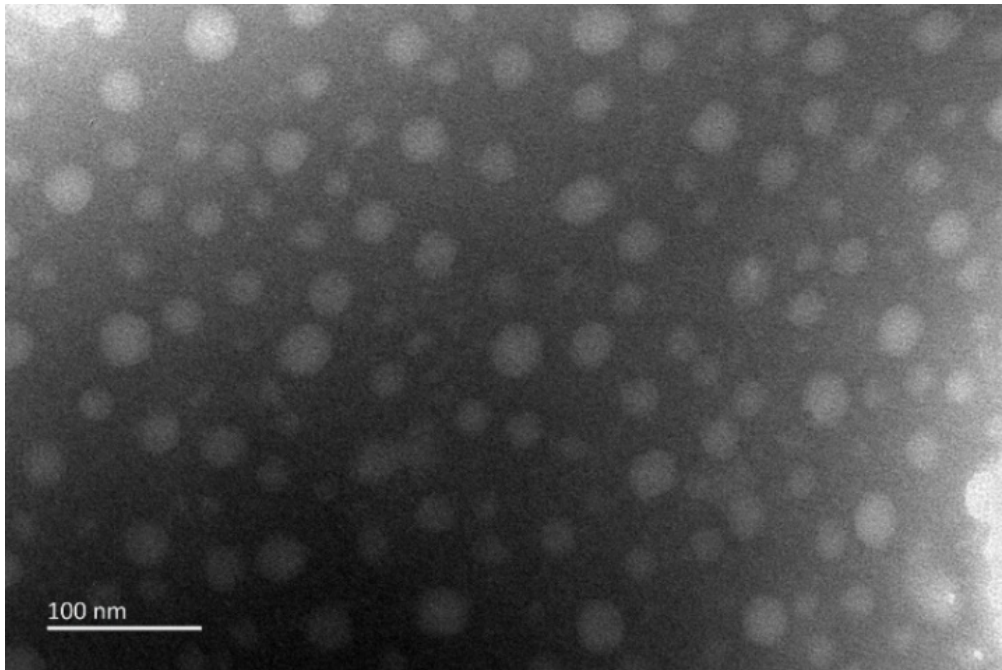


Fig. S2. TEM image of PT emulsion.

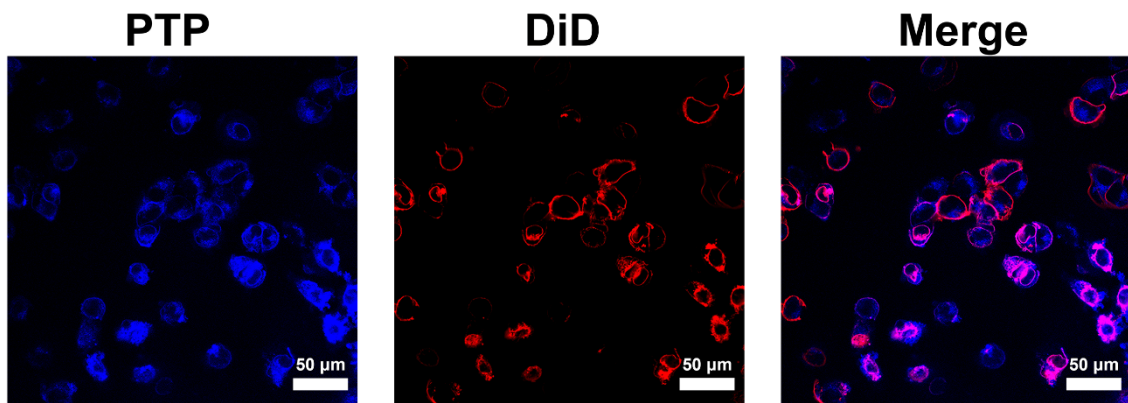


Fig. S3. CLSM images of MCF-7 staining with PTP and DiD (dye for labelling cell membranes).

Supplementary Tables

Table S1. PTP emulsion at pH = 7.4

Time	Size(nm)	PDI	Zeta potential (mV)
1 day	47.52	0.22	-39.90
1 week	48.27	0.22	-40.40
2 weeks	50.81	0.23	-39.67
1 month	51.94	0.23	-31.07

Table S2. PTP emulsion at pH = 6.5

Time	Size(nm)	PDI	Zeta potential (mV)
1 hour	55.54	0.21	-23.17
4 hours	55.91	0.23	-22.97
8 hours	62.61	0.28	-23.73
12 hours	61.82	0.28	-22.23

Table S3. PT emulsion at pH = 7.4

Time	Size(nm)	PDI	Zeta potential (mV)
1 day	36.25	0.19	-57.03
1 week	46.67	0.17	-48.10
2 weeks	46.91	0.14	-45.13
1 month	47.07	0.12	-43.7

Table S4. PT emulsion at pH = 6.5

Time	Size(nm)	PDI	Zeta potential (mV)
1 hour	47.63	0.11	-47.9
4 hours	48.97	0.12	-38.10
8 hours	49.33	0.11	-37.30
12 hours	49.57	0.13	-28.8